



# PW0-104<sup>Q&As</sup>

Wireless LAN Administration Exam

**Pass CWNP PW0-104 Exam with 100% Guarantee**

Free Download Real Questions & Answers **PDF** and **VCE** file from:

<https://www.pass4itsure.com/PW0-104.html>

100% Passing Guarantee  
100% Money Back Assurance

Following Questions and Answers are all new published by CWNP  
Official Exam Center

-  **Instant Download** After Purchase
-  **100% Money Back** Guarantee
-  **365 Days** Free Update
-  **800,000+** Satisfied Customers



**QUESTION 1**

If an 802.11 RF transmission reaches a receiving antenna simultaneously by direct and indirect (reflected) paths, what effect will the reflected signal have on the signal that took the direct line-of-sight path?

- A. The direct signal will only be received if the reflected signal is more than 180 degrees out of phase.
- B. The direct signal cannot be received if the indirect signal is less than 90 degrees out-of-phase.
- C. The signals will be distorted if the indirect signal arrives simultaneously at the receiver, but 90 degrees out-of-phase.
- D. If the signals are in-phase, they will combine together, cancel one another out, and create a null.

Correct Answer: C

---

**QUESTION 2**

When a client moves to a new BSS within an ESS, what steps are part of the 802.11 reassociation process? (Choose two)

- A. The client station transmits a Reassociation Request frame to its current access point.
- B. The current access point informs the IP gateway of the reassociation.
- C. The current access point triggers the client's reassociation service.
- D. The new access point transmits a Reassociation Response to the client station with a status value.
- E. The client and new access point create unicast encryption keys.
- F. The client station transmits a deauthentication frame to the current access point.

Correct Answer: DE

---

**QUESTION 3**

What specifications should be evaluated for an antenna before it is implemented in a WLAN system? (Choose three)

- A. Spectral efficiency
- B. TPC support
- C. Impedance in Ohms
- D. Elevation Beamwidth
- E. Return Loss Rating
- F. Operating Frequencies

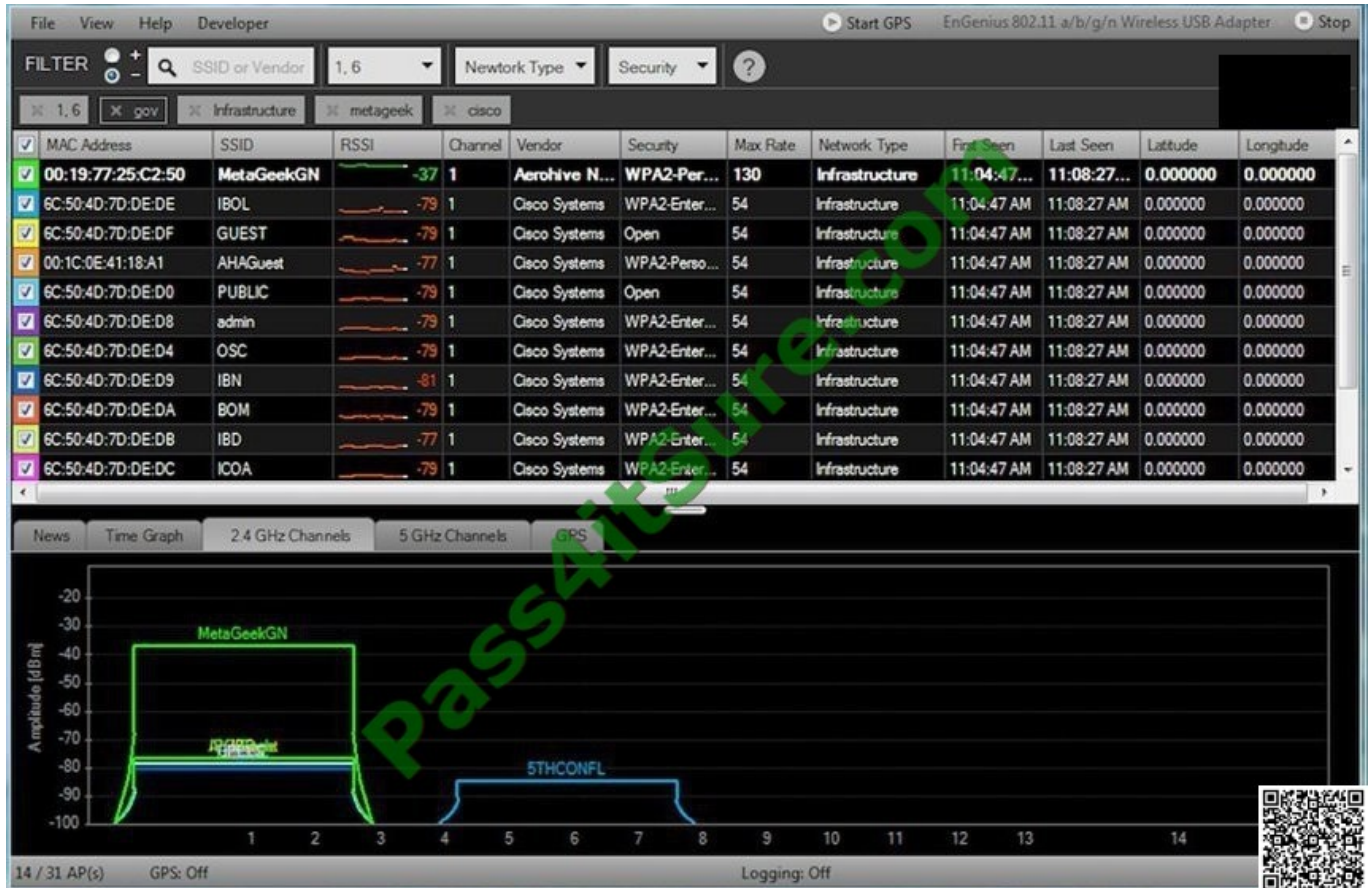
Correct Answer: CDF

---



#### QUESTION 4

What is the general type and purpose of the application shown in the exhibit?



- A. Laptop-based Site Survey Utility - Creating a list of necessary APs and plotting their locations on a floor plan
- B. Wireless Network Management System - Managing multiple autonomous APs through the SNMP protocol
- C. 802.11 Protocol Analyzer - Capturing and decoding 802.11 frames for the purpose of troubleshooting and optimization
- D. Laptop-based Spectrum Analyzer - Monitoring the RF spectrum for interference sources and improper system operation
- E. WLAN Discovery Tool - Locating and identifying secured and unsecured WLAN access points
- F. Wireless Intrusion Protection System - Monitoring 802.11 frame exchanges for performance and security analysis and reporting

Correct Answer: E

#### QUESTION 5

Given: ABC Hospital is planning a Wi-Fi infrastructure upgrade where the 802.11b/g APs would be replaced with new



dual-radio HT (802.11n) APs. ABC wants to minimize the time and cost associated with performing a new site survey, so

they will be mounting all of the new APs in the same locations and with the same cable drops as the existing APs.

What is one performance drawback with this deployment method?

A. Multipath will increase, causing excessive layer-2 retransmissions. The retransmissions will cause latency for VoWiFi handsets.

B. Increased receiver sensitivity on the HT APs will cause them to continually change channels to avoid co-channel interference.

C. If the existing UTP cabling is not Category 6 or better, the total Ethernet backhaul for each AP will be limited to 100 Mbps.

D. In locations with line-of-sight to client devices and little multipath, the benefits of MIMO may be less significant than in other areas.

Correct Answer: D

[Latest PW0-104 Dumps](#)

[PW0-104 PDF Dumps](#)

[PW0-104 Study Guide](#)



To Read the [Whole Q&As](#), please purchase the [Complete Version](#) from [Our website](#).

## Try our product !

100% Guaranteed Success

100% Money Back Guarantee

365 Days Free Update

Instant Download After Purchase

24x7 Customer Support

Average 99.9% Success Rate

More than 800,000 Satisfied Customers Worldwide

Multi-Platform capabilities - [Windows](#), [Mac](#), [Android](#), [iPhone](#), [iPod](#), [iPad](#), [Kindle](#)

We provide exam PDF and VCE of Cisco, Microsoft, IBM, CompTIA, Oracle and other IT Certifications. You can view Vendor list of All Certification Exams offered:

<https://www.pass4itsure.com/allproducts>

## Need Help

Please provide as much detail as possible so we can best assist you.

To update a previously submitted ticket:



|   |   |  |
|---|---|--|
|  <p><b>One Year Free Update</b><br/>Free update is available within One Year after your purchase. After One Year, you will get 50% discounts for updating. And we are proud to boast a 24/7 efficient Customer Support system via Email.</p> |  <p><b>Money Back Guarantee</b><br/>To ensure that you are spending on quality products, we provide 100% money back guarantee for 30 days from the date of purchase.</p> |  <p><b>Security &amp; Privacy</b><br/>We respect customer privacy. We use McAfee's security service to provide you with utmost security for your personal information &amp; peace of mind.</p> |
|---|---|--|

Any charges made through this site will appear as Global Simulators Limited.

All trademarks are the property of their respective owners.

Copyright © pass4itsure, All Rights Reserved.