



# OMG-OCUP2-INT200<sup>Q&As</sup>

OMG Certified UML Professional 2 (OCUP 2) - Intermediate Level

**Pass OMG OMG-OCUP2-INT200 Exam with 100% Guarantee**

Free Download Real Questions & Answers **PDF** and **VCE** file from:

<https://www.pass4itsure.com/omg-ocup2-int200.html>

100% Passing Guarantee  
100% Money Back Assurance

Following Questions and Answers are all new published by OMG  
Official Exam Center

-  **Instant Download** After Purchase
-  **100% Money Back** Guarantee
-  **365 Days** Free Update
-  **800,000+** Satisfied Customers





### QUESTION 1

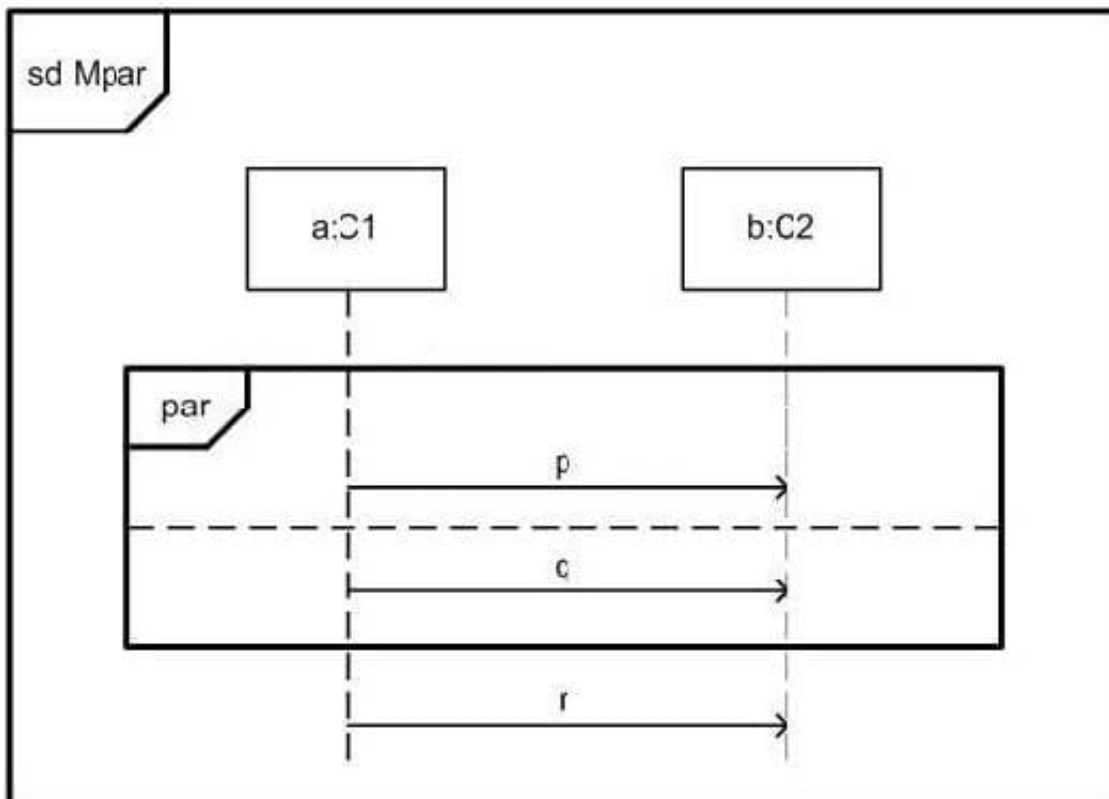
What does it mean when message m is ignored in a combined fragment?

- A. Nothing happens within the fragment until m appears.
- B. Message m appears only in illegal traces of the fragment.
- C. If m happens, the system should abort.
- D. One or more m messages may appear at any point within the fragment.

Correct Answer: D

### QUESTION 2

In the exhibit, what is true about Mpar?



- A. There are legal traces that do not contain message q.
- B. Every trace contains all three messages.
- C. Receiving p must always precede receiving q.
- D. Sending p must always precede sending q.



Correct Answer: B

### QUESTION 3

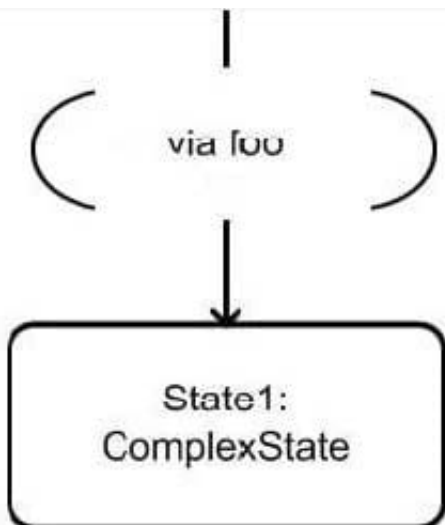
What objects receive a signal sent by a Broadcast Signal Action?

- A. objects that are instantiated from classes in the package of the action
- B. all objects
- C. objects are determined by semantic variation
- D. objects that are on the same node as the actions
- E. all objects that have a reception for the signal

Correct Answer: C

### QUESTION 4

What does via foo in the exhibit designate?



- A. an action foo associated with the transition
- B. transient pseudostate named foo
- C. a transition terminating on the foo entry point
- D. a Boolean guard equal to the logical value of foo
- E. the sending of a foo message on the transition

Correct Answer: C



### QUESTION 5

What does a region in a state machine represent?

- A. part of a composite state or a state machine containing transitions and vertices
- B. contained state machine
- C. concurrent object owned by the context object of the state machine
- D. separate thread of execution
- E. concurrent state

Correct Answer: A

[Latest OMG-OCUP2-INT200 Dumps](#)

[OMG-OCUP2-INT200 VCE Dumps](#)

[OMG-OCUP2-INT200 Braindumps](#)