



# NSE6\_FML-6.0<sup>Q&As</sup>

Fortinet NSE 6 - FortiMail 6.0

## Pass Fortinet NSE6\_FML-6.0 Exam with 100% Guarantee

Free Download Real Questions & Answers **PDF** and **VCE** file from:

[https://www.pass4itsure.com/nse6\\_fml-6-0.html](https://www.pass4itsure.com/nse6_fml-6-0.html)

100% Passing Guarantee  
100% Money Back Assurance

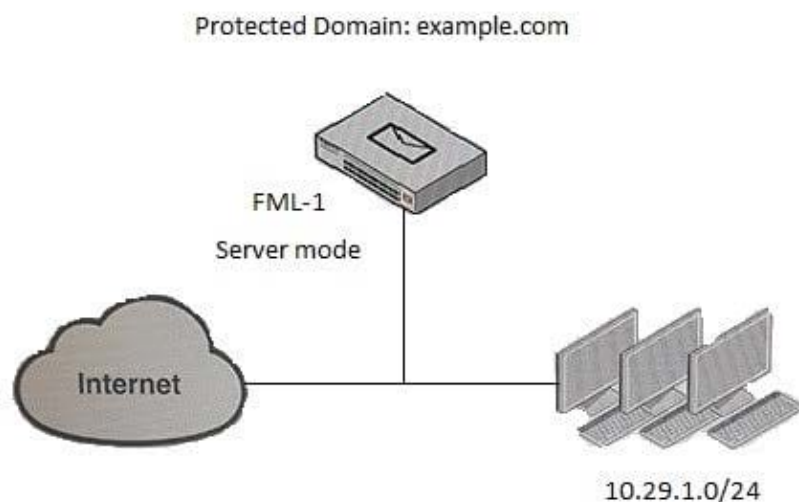
Following Questions and Answers are all new published by Fortinet  
Official Exam Center

- ⚙️ **Instant Download** After Purchase
- ⚙️ **100% Money Back** Guarantee
- ⚙️ **365 Days** Free Update
- ⚙️ **800,000+** Satisfied Customers



**QUESTION 1**

Examine the FortiMail topology and access receive rule shown in the exhibit; then answer the question below.

**FortiMail****Access Control Rule**

Enabled	<input checked="" type="checkbox"/>
Sender pattern:	<div>User Defined</div> <div>*</div> <div><input type="checkbox"/> Regular expression</div>
Recipient pattern:	<div>User Defined</div> <div>*</div> <div><input type="checkbox"/> Regular expression</div>
Sender IP/netmask:	<div>User Defined</div> <div>0.0.0.0 / 0</div>
Reverse DNS pattern:	<div>*</div> <div><input type="checkbox"/> Regular expression</div>
Authentication status:	<div>Any</div>
TLS profile:	<div>--None--</div> <div>New... Edit...</div>
Action:	<div>Reject</div>
Comments:	<div></div>
<div>Create Cancel</div>	

An administrator must enforce authentication on FML-1 for all outbound email from the example.com domain. Which of



the following settings should be used to configure the access receive rule? (Choose two.)

- A. The Sender IP/netmask should be set to 10.29.1.0/24
- B. The Authentication status should be set to Authenticated
- C. The Recipient pattern should be set to \*@example.com
- D. The Action should be set to Reject

Correct Answer: CD

---

## QUESTION 2

Examine the FortiMail archiving policies shown in the exhibit; then answer the question below.

FortiMail

**Email Archiving Exempt Policy**

ID:

Account:

Policy type:

Pattern:

Policy status: ☒ Enabled

FortiMail

**Email Archiving Policy**

ID:

Account:

Policy type:

Pattern:

Policy status: ☒ Enabled

Which of the following statements is true regarding this configuration? (Choose two.)

- A. Spam email will be exempt from archiving
- B. Email sent from marketing@example.com will be archived
- C. Archived email will be saved in the journal account



D. Only the marketing@example.com account will be able to access the archived email

Correct Answer: AB

### QUESTION 3

Examine the message column of a log cross search result of an inbound email shown in the exhibit; then answer the question below



Based on logs, which of the following statements are true? (Choose two.)

- A. The FortiMail is experiencing issues delivering the email to the back-end mail server
- B. The logs were generated by a server mode FortiMail
- C. The logs were generated by a gateway or transparent mode FortiMail
- D. The FortiMail is experiencing issues accepting the connection from the remote sender

Correct Answer: BD

### QUESTION 4

Which firmware upgrade method for an active-passive HA cluster ensures service outage is minimal and there are no unnecessary failovers?

- A. Upgrade the active unit, which will upgrade the standby unit automatically
- B. Upgrade both units at the same time
- C. Upgrade the standby unit, and then upgrade the active unit
- D. Break the cluster, upgrade the units independently, and then form the cluster again as quickly as possible

Correct Answer: D

### QUESTION 5

Which of the following statements regarding SMTPS and SMTP over TLS are true? (Choose three.)



- A. In an SMTPS session, the identities of both sender and receiver are encrypted
- B. SMTPS connections are initiated on port 465
- C. SMTP over TLS connections are entirely encrypted and initiated on port 465
- D. The STARTTLS command is used to initiate SMTP over TLS
- E. SMTPS encrypts the body of the email message, where the most sensitive content exists

Correct Answer: ABD

[NSE6\\_FML-6.0 PDF Dumps](#)

[NSE6\\_FML-6.0 Practice  
Test](#)

[NSE6\\_FML-6.0 Exam  
Questions](#)