



NSE4_FGT-6.4^{Q&As}

Fortinet NSE 4 - FortiOS 6.4

Pass Fortinet NSE4_FGT-6.4 Exam with 100% Guarantee

Free Download Real Questions & Answers **PDF** and **VCE** file from:

https://www.pass4itsure.com/nse4_fgt-6-4.html

100% Passing Guarantee
100% Money Back Assurance

Following Questions and Answers are all new published by Fortinet Official Exam Center

-  **Instant Download** After Purchase
-  **100% Money Back** Guarantee
-  **365 Days** Free Update
-  **800,000+** Satisfied Customers



**QUESTION 1**

Examine this FortiGate configuration: How does the FortiGate handle web proxy traffic coming from the IP address 10.2.1.200 that requires authorization?

```
config authentication setting
    set active-auth-scheme SCHEME1
end
config authentication rule
    edit WebProxyRule
        set srcaddr 10.0.1.0/24
        set active-auth-method SCHEME2
    next
end
```

- A. It always authorizes the traffic without requiring authentication.
- B. It drops the traffic.
- C. It authenticates the traffic using the authentication scheme SCHEME2.
- D. It authenticates the traffic using the authentication scheme SCHEME1.

Correct Answer: D

"What happens to traffic that requires authorization, but does not match any authentication rule? The active and passive SSO schemes to use for those cases is defined under config authentication setting"

QUESTION 2

Which downstream FortiGate VDOM is used to join the Security Fabric when split-task VDOM is enabled on all FortiGate devices?

- A. Root VDOM
- B. FG-traffic VDOM
- C. Customer VDOM D. Global VDOM

Correct Answer: A

QUESTION 3

Which of the following are purposes of NAT traversal in IPsec? (Choose two.)

- A. To detect intermediary NAT devices in the tunnel path.
- B. To dynamically change phase 1 negotiation mode aggressive mode.



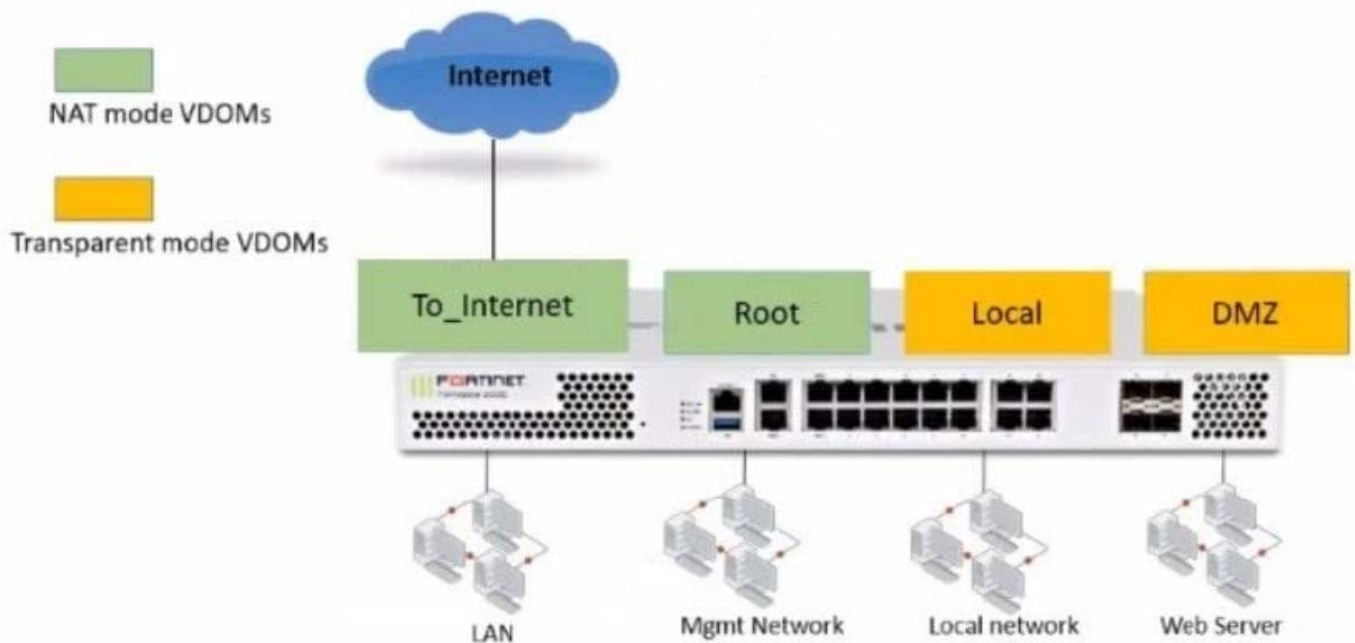
C. To encapsulation ESP packets in UDP packets using port 4500.

D. To force a new DH exchange with each phase 2 rekey.

Correct Answer: AC

QUESTION 4

Refer to the exhibit.



The Root and To_Internet VDOMs are configured in NAT mode. The DMZ and Local VDOMs are configured in transparent mode.

The Root VDOM is the management VDOM. The To_Internet VDOM allows LAN users to access the Internet. The To_Internet VDOM is the only VDOM with internet access and is directly connected to ISP modem.

Which two statements are true? (Choose two.)

- A. Inter-VDOM links are required to allow traffic between the Local and Root VDOMs.
- B. A static route is required on the To_Internet VDOM to allow LAN users to access the internet.
- C. Inter-VDOM links are required to allow traffic between the Local and DMZ VDOMs.
- D. Inter-VDOM links are not required between the Root and To_Internet VDOMs because the Root VDOM is used only as a management VDOM.

Correct Answer: AD

QUESTION 5



A FortiGate is operating in NAT mode and configured with two virtual LAN (VLAN) sub interfaces added to the physical interface.

Which statements about the VLAN sub interfaces can have the same VLAN ID, only if they have IP addresses in different subnets.

- A. The two VLAN sub interfaces can have the same VLAN ID, only if they have IP addresses in different subnets.
- B. The two VLAN sub interfaces must have different VLAN IDs.
- C. The two VLAN sub interfaces can have the same VLAN ID, only if they belong to different VDOMs.
- D. The two VLAN sub interfaces can have the same VLAN ID, only if they have IP addresses in the same subnet.

Correct Answer: B

FortiGate_Infrastructure_6.0_Study_Guide_v2-Online.pdf ?gt; page 147 "Multiple VLANs can coexist in the same physical interface, provide they have different VLAN ID"

[Latest NSE4_FGT-6.4 Dumps](#)

[NSE4_FGT-6.4 Practice Test](#)

[NSE4_FGT-6.4 Exam Questions](#)