



# NS0-175<sup>Q&As</sup>

Cisco and NetApp FlexPod Design Specialist

## Pass NetApp NS0-175 Exam with 100% Guarantee

Free Download Real Questions & Answers **PDF** and **VCE** file from:

<https://www.pass4itsure.com/ns0-175.html>

100% Passing Guarantee  
100% Money Back Assurance

Following Questions and Answers are all new published by NetApp  
Official Exam Center

-  **Instant Download** After Purchase
-  **100% Money Back** Guarantee
-  **365 Days** Free Update
-  **800,000+** Satisfied Customers



**QUESTION 1**

You are developing a FlexPod solution with a MetroCluster IP as the storage solution. In this scenario, which two components are supported? (Choose two.)

- A. NetApp AFF C190
- B. Cisco Nexus 3524-X/XL
- C. Cisco Nexus 3232C
- D. NetApp AFF A400

Correct Answer: CD

Reference: <https://www.netapp.com/blog/flexpod-datacenter-solutions/>

---

**QUESTION 2**

A customer has a workload that requires an extremely dense deployment of CPU cores. For this workload, they have chosen to deploy servers that use AMD EPYC processors.

Which Cisco UCS server product would you use to satisfy this workload demand?

- A. Cisco UCS C240 M5
- B. Cisco UCS B480 M5
- C. Cisco UCS B200 M5
- D. Cisco UCS C125 M5

Correct Answer: D

Reference: <https://www.cisco.com/c/en/us/products/collateral/servers-unified-computing/ucs-c4200-seriesrack-server-chassis/cisco-ucs-c125-m5-servers-horizon.html>

---

**QUESTION 3**

Which two support account levels are minimally required when you deploy a FlexPod Datacenter solution? (Choose two.)

- A. NetApp SupportEdge Expert NBD
- B. Cisco SmartNet Total Care 24x7x4
- C. NetApp SupportEdge Advisor 24x7x4
- D. Cisco Solution Support 24x7x4

Correct Answer: CD



#### QUESTION 4

Click the Exhibit button. Exhibit 1.

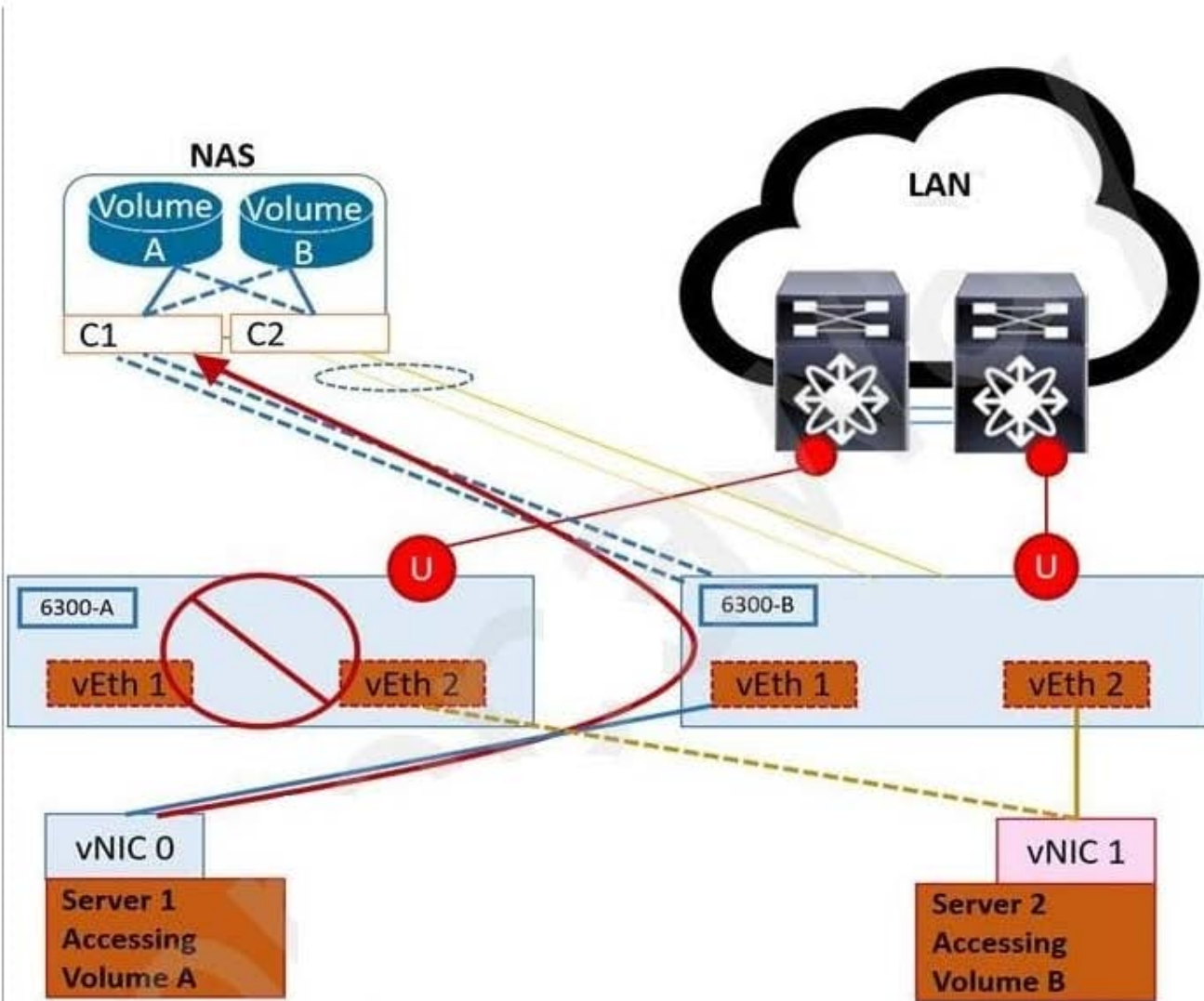


Figure 1

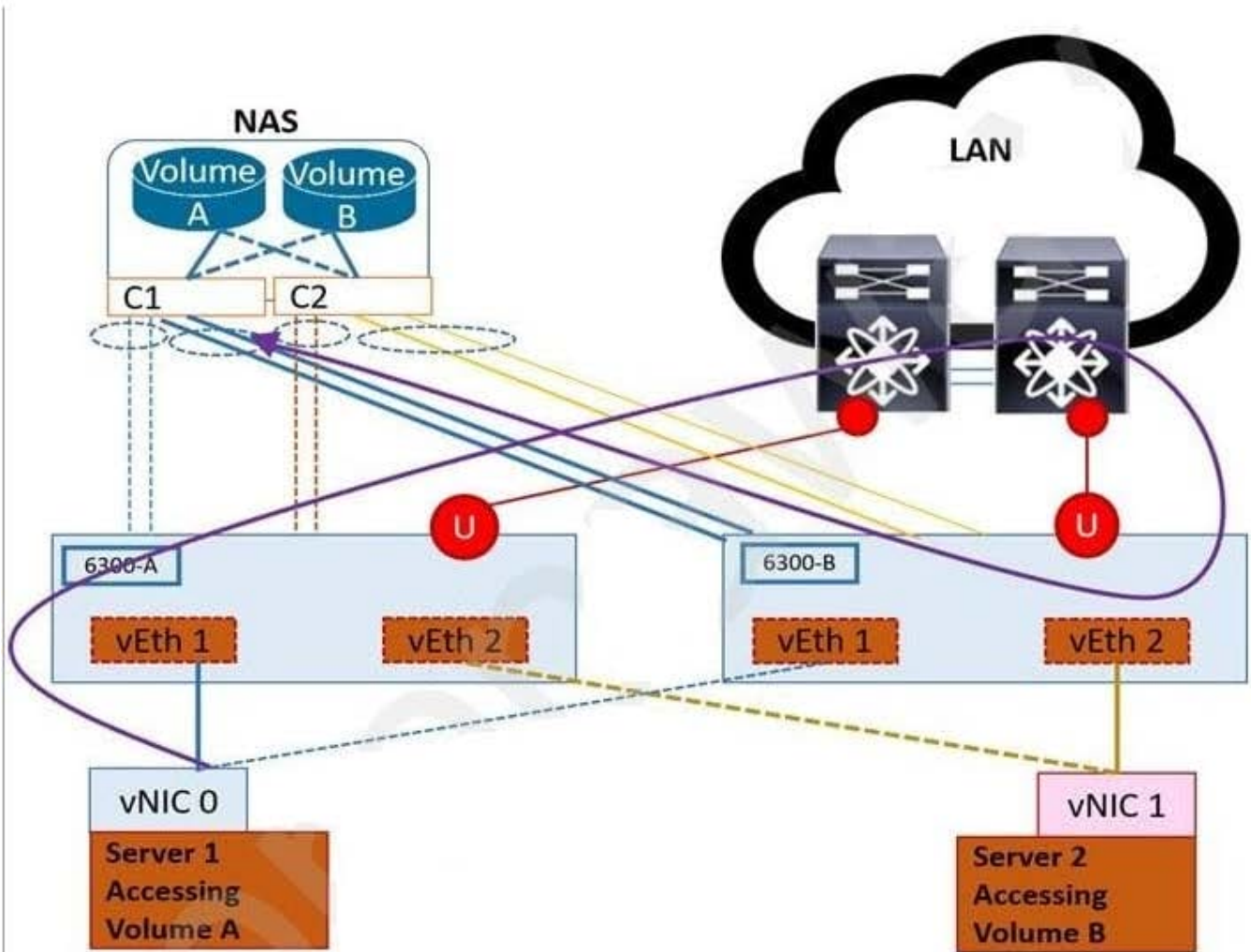
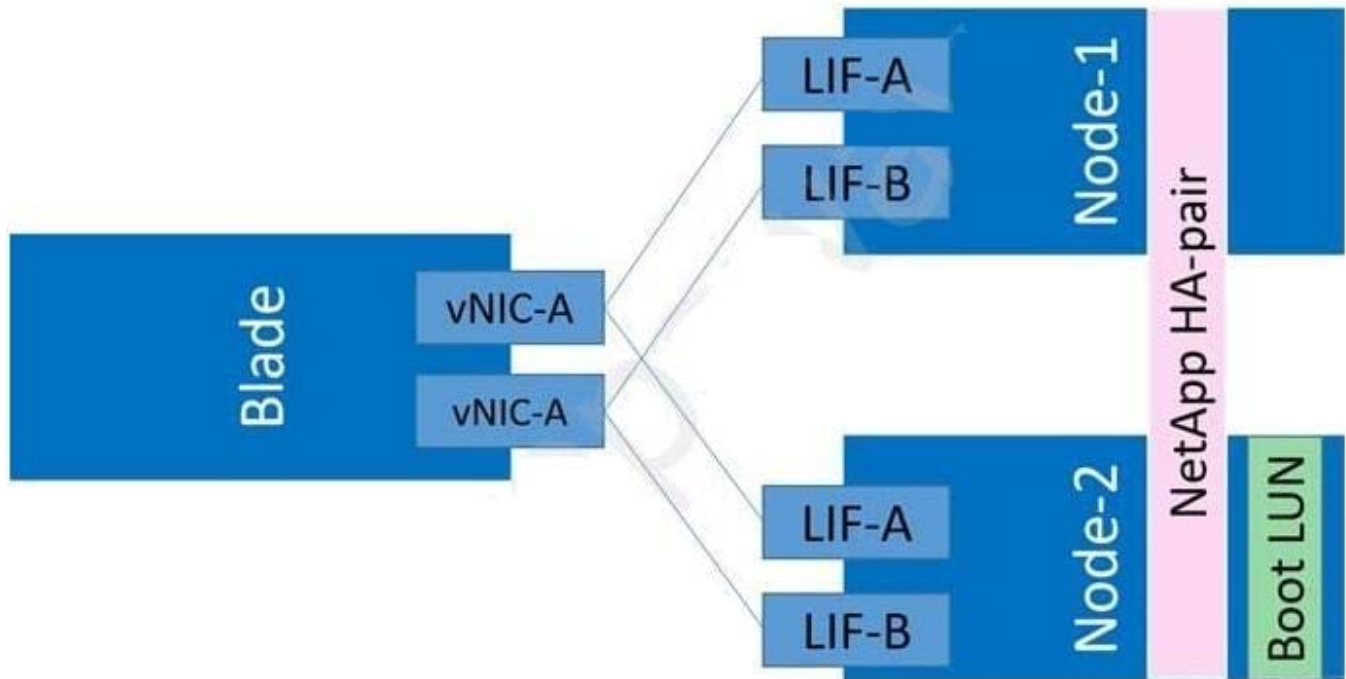


Figure 2



Exhibit 2.



Referring to the exhibit, UCS Fabric Interconnect 6300-A fails as shown in Figure 1. Due to the storage LIF configuration, after UCS Fabric Interconnect 6300-A is restored, traffic flows as shown in Figure 2.

To enable this capability, on which two UCS port types should storage VLANs be accessible? (Choose two.)

- A. uplink ports
- B. appliance ports
- C. fabric ports
- D. switch ports

Correct Answer: AB

Reference: [https://www.cisco.com/c/en/us/td/docs/unified\\_computing/ucs/ucs-manager/GUI-User-Guides/Getting-Started/3-2/b\\_UCSM\\_Getting\\_Started\\_Guide\\_3\\_2/b\\_UCSM\\_Getting\\_Started\\_Guide\\_3\\_2\\_chapter\\_010.pdf](https://www.cisco.com/c/en/us/td/docs/unified_computing/ucs/ucs-manager/GUI-User-Guides/Getting-Started/3-2/b_UCSM_Getting_Started_Guide_3_2/b_UCSM_Getting_Started_Guide_3_2_chapter_010.pdf) (8)

## QUESTION 5

A customer has decided to deploy Red Hat OpenShift on a FlexPod solution, based in a published Cisco Validated Design. The customer intends to use the NetApp Trident to attach persistent storage to the customer's containers from the customer's NetApp AFF controllers.

In this scenario, which two storage protocols are supported? (Choose two.)

- A. iSCSI
- B. FC



C. NFS

D. SMB

Correct Answer: BC

[Latest NS0-175 Dumps](#)

[NS0-175 Practice Test](#)

[NS0-175 Study Guide](#)