



# MCD-LEVEL1<sup>Q&As</sup>

MuleSoft Certified Developer - Level 1 (Mule 4)

## Pass Mulesoft MCD-LEVEL1 Exam with 100% Guarantee

Free Download Real Questions & Answers **PDF** and **VCE** file from:

<https://www.pass4itsure.com/mcd-level1.html>

100% Passing Guarantee  
100% Money Back Assurance

Following Questions and Answers are all new published by Mulesoft  
Official Exam Center

-  **Instant Download** After Purchase
-  **100% Money Back** Guarantee
-  **365 Days** Free Update
-  **800,000+** Satisfied Customers





## QUESTION 1

Refer to the exhibits.

The mule application implements a REST API that accepts GET request from two URL's which are as follows

- 1) `http://acme.com/order/status`
- 2) `http://acme.com/customer/status`

What path value should be set in HTTP listener configuration so that requests can be accepted for both these URL's using a single HTTP listener event source?

The screenshot shows the configuration page for an HTTP Get listener. The 'General' tab is active. A red error message at the top indicates that the 'path' attribute is required. The 'Display Name' is set to 'HTTP Get'. The 'Connector configuration' is set to 'HTTP\_Listener\_config'. The 'Path' field is currently empty. The left sidebar shows various configuration categories: General, MIME Type, Redelivery, Responses, Advanced, Metadata, Notes, and Help.

- A. `*[order,customer]/status`
- B. `?[order,customer]/status`
- C. `*/status` (Correct)
- D. `*status`

Correct Answer: C

Correct answer is `*/status` as it is the correct way to use wildcards while configuring path value in HTTP listener

## QUESTION 2

Refer to the exhibits.



Message Flow Global Elements Configuration XML

Set to XML x Problems Console

General  
Metadata  
Notes

There are no errors.

Display Name: Set to XML

Settings

```
<ns2:listAllFlightsResponse xmlns:ns2="http://soap.training.mulesoft.com/">
<return>
```

Encoding: [Dropdown]

MIME Type: [Dropdown]

```
<flow name="getFlights" >
  <http:listener doc:name="HTTP: GET /flights" config-ref="HTTP_Listener_config" path="/flights"/>
  <set-payload value='&lt;ns2:listAllFlightsResponse xmlns:ns2="http://soap.training.mulesoft.com/"&gt;
    &lt;return&gt;
    &lt;airlineName&gt;Delta&lt;/airlineName&gt;
    &lt;code&gt;A1B2C3&lt;/code&gt;
    &lt;departureDate&gt;2015/03/20&lt;/departureDate&gt;
    &lt;/return&gt;
    &lt;/ns2:listAllFlightsResponse&gt;' doc:name="Set to XML" />
  <ee:transform doc:name="typeOf(payload)" doc:id="43898508-15e2-4cb7-8d0b-bd9c2929209e" >
    <ee:message><ee:set-payload ><![CDATA[%dw 2.0
      output application/json
      ---
      typeOf(payload)]]></ee:set-payload>
    </ee:message>
  </ee:transform>
</flow>
```

A web client submits a request to <http://localhost:8081/flights>. What is the result at the end of the flow?

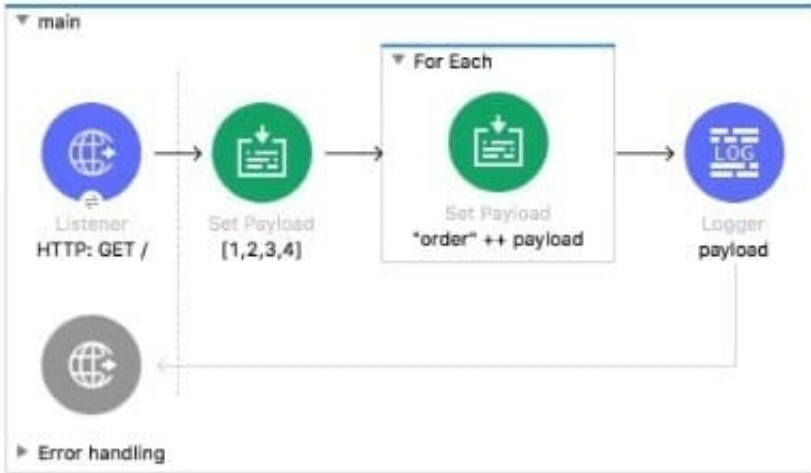
- A. "string"
- B. "Java"
- C. "object"
- D. "XML"

Correct Answer: A



### QUESTION 3

Refer to the exhibits. What payload is logged at the end of the main flow?



```
<flow name="main" >
  <http:listener doc:name="HTTP: GET /" config-ref="HTTP_Listener_config" path="/" />
  <set-payload value="#[[1,2,3,4]]" doc:name="[1,2,3,4]" />
  <foreach doc:name="For Each" >
    <set-payload value="#["order" ++ payload]" doc:name="'order' ++ payload" />
  </foreach>
  <logger level="INFO" doc:name="payload" message="#[payload]" />
</flow>
```

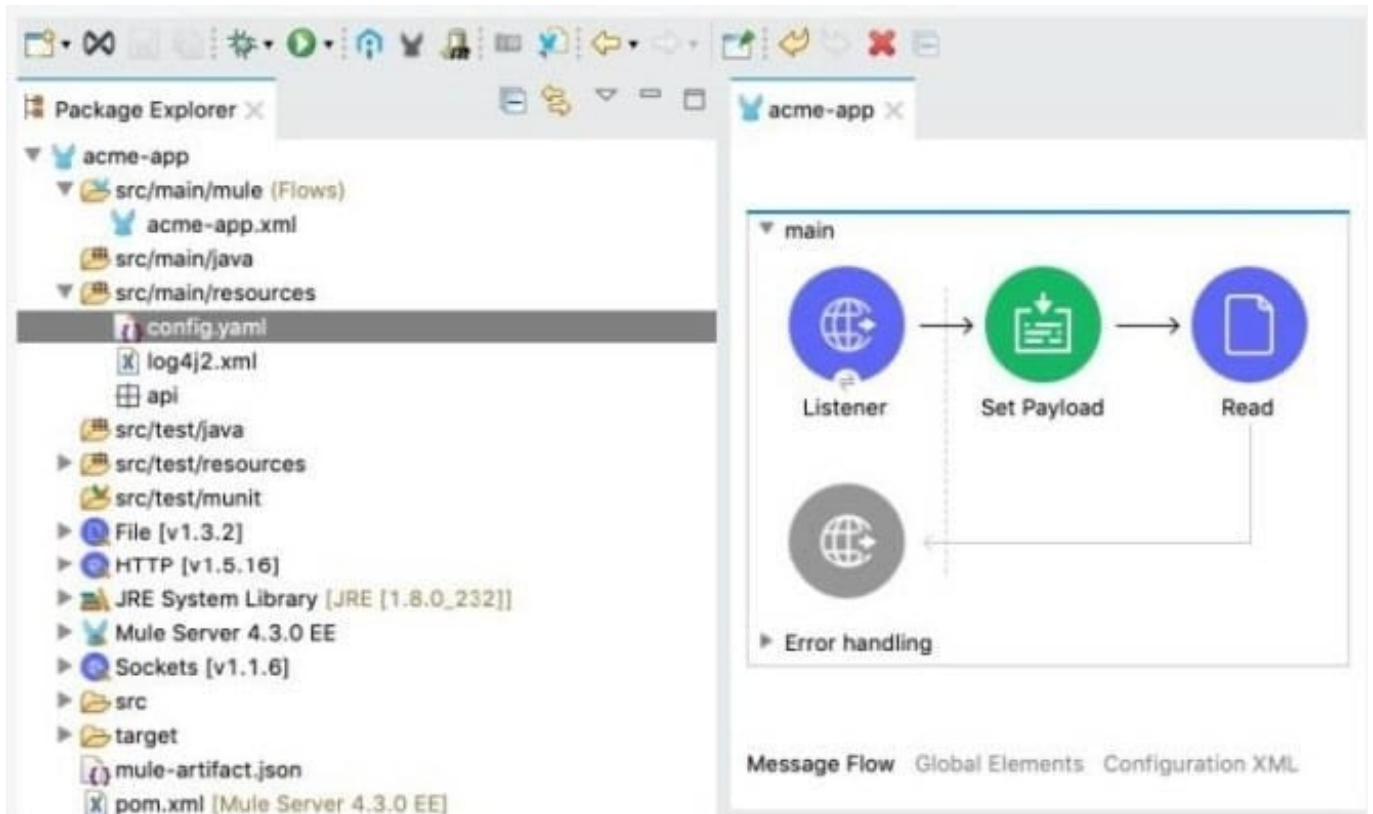
- A. [order1, order2, order3, order4]
- B. [1, 2, 3, 4]
- C. order4
- D. order1order2order3order4

Correct Answer: B

This is a trick question. For Each does not modify the current payload. The output payload is the same as the input. Hence output of logger is the same payload which is set before invoking For Each scope. Hence option 2 is correct answer.

### QUESTION 4

Refer to the exhibit.



The Mule application's connectors are configured with property placeholders whose values are set in the config.yaml file. What must be added to the Mule application to link the config.yaml file's values with the property placeholders?

- A. A configuration-properties element in the acme-app.xml file
- B. A dependency element in the pom.xml file
- C. A file-config element in the acme-app.xml file
- D. A propertiesFile key/value pair in the mule-artifact.json file

Correct Answer: A

## QUESTION 5

In an application network, if the implementation but not the interface of a product API changes, what needs to be done to the other APIs that consume the product API?

- A. The applications associated with the other APIs must be restarted
- B. The applications associated with the other APIs must be recoded
- C. The other APIs must be updated to consume the updated product API
- D. Nothing needs to be changed in the other APIs or their associated applications

Correct Answer: D



Correct answer is Nothing needs to be changed in the other APIs or their associated applications This is the benefit of having separate interface layer. As there are no changes to interface , no changes are required on the API's which consumes this API in context

[MCD-LEVEL1 VCE Dumps](#)

[MCD-LEVEL1 Practice Test](#)

[MCD-LEVEL1 Exam Questions](#)