



JPR-934^{Q&As}

Security, Expert (JNCIE-SEC)

Pass Juniper JPR-934 Exam with 100% Guarantee

Free Download Real Questions & Answers **PDF** and **VCE** file from:

<https://www.pass4itsure.com/jpr-934.html>

100% Passing Guarantee
100% Money Back Assurance

Following Questions and Answers are all new published by Juniper
Official Exam Center

- ⚙ **Instant Download** After Purchase
- ⚙ **100% Money Back** Guarantee
- ⚙ **365 Days** Free Update
- ⚙ **800,000+** Satisfied Customers



**QUESTION 1**

You work as a network administrator for ABC.com. The ABC.com network consists of a single Active Directory domain named ABC.com. There are currently 120 Web servers running Windows Server and are contained in an Organizational Unit (OU) named ABC_WebServers

ABC.com management took a decision to uABCrade all Web servers to Windows Server. You disable all services on the Web servers that are not required. After running the IIS Lockdown Wizard on a recently deployed web server, you discover that services such as NNTP that are not required are still enabled on the Web server.

How can you ensure that the services that are not required are forever disabled on the Web servers without affecting the other servers on the network? (Choose two.)

- A. Set up a GPO that will change the startup type for the services to Automatic.
- B. By linking the GPO to the ABC_WebServers OU.
- C. Set up a GPO with the Hisecws.inf security template imported into the GPO.
- D. By linking the GPO to the domain.
- E. Set up a GPO in order to set the startup type of the redundant services to Disabled.
- F. By linking the GPO to the Domain Controllers OU.
- G. Set up a GPO in order to apply a startup script to stop the redundant services.

Correct Answer: BE

QUESTION 2

You are working on an existing server. The NIC manufacturer has notified you of an updated driver for your card that will greatly improve performance. You download and install the new driver. Before you reboot the system, you perform an ASR backup. When you reboot the system, it reaches the graphical portion of the boot process and presents a STOP message. What is the proper process for recovering from this problem?

- A. Perform an ASR restore from the ASR backup set you created before the reboot.
- B. Reboot the system, press F8 when prompted during the boot process, select Last Known Good Configuration, and press Enter.
- C. Reinstall the operating system and do a restore of the system from tape backup.
- D. Reboot the system, press F8 when prompted during the boot process, select Safe Mode, and press Enter.

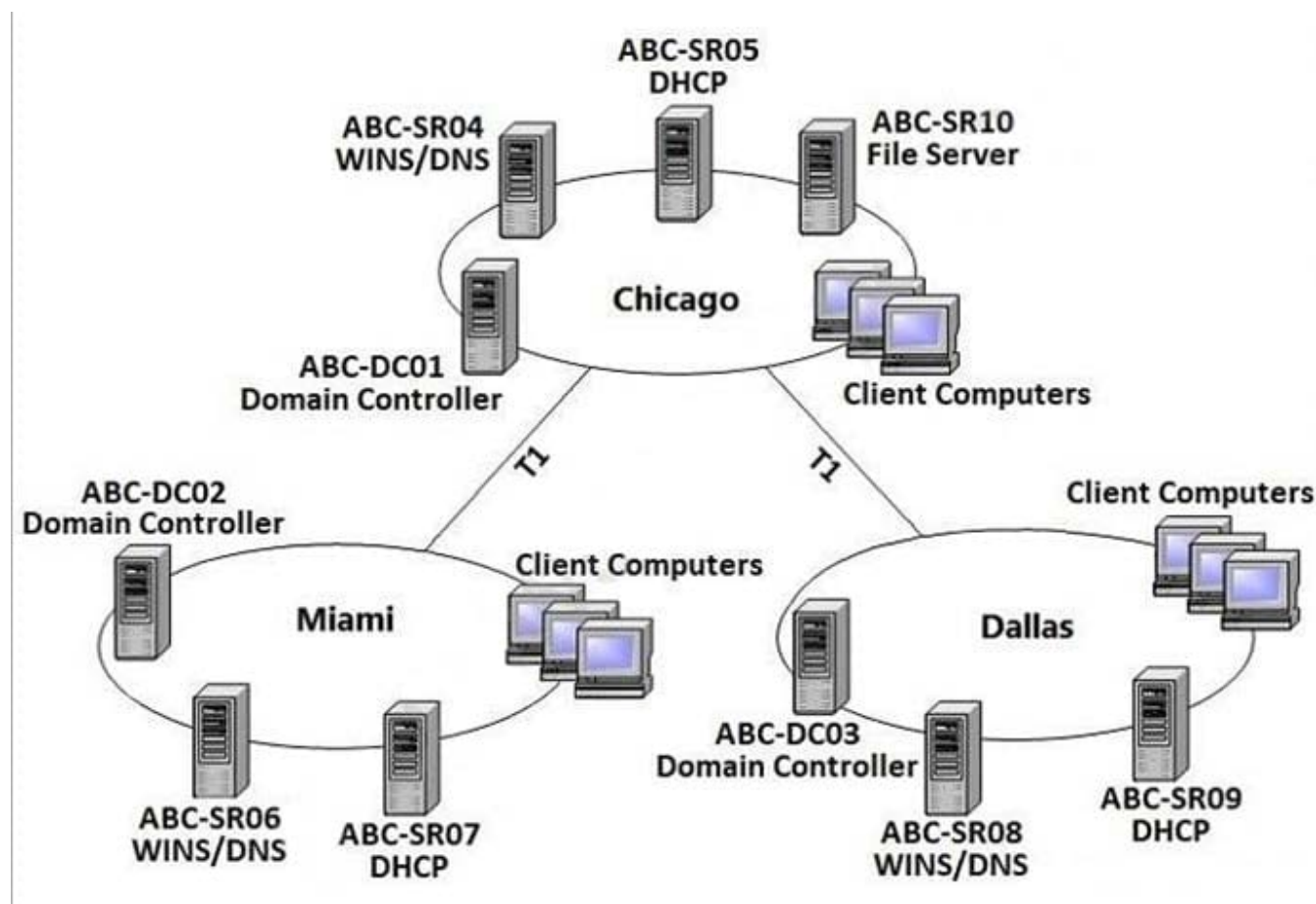
Correct Answer: B

QUESTION 3

The ABC.com network consists of a single Active Directory domain named ABC.com. All servers on the ABC.com network run Windows Server.



ABC.com has its headquarters in Chicago and two branch offices in Dallas and Miami. The branch offices are connected to the headquarters by means of T1 WAN links. The network at each office is configured as a separate Active Directory site as shown below.



ABC.com users in all three sites require access to a file server named ABC-SR10 that is located in the Chicago site.

Users in the Miami and Dallas offices are complaining about the unacceptable file server performance during peak working hours. You want to design a solution that provides fault tolerance for the file server and minimizes traffic over the WAN

links during office hours.

Which solution would you recommend?

- A. Implement a Distributed File System (DFS) with the DFS root in the Chicago office and DFS replicas in the Dallas and Miami offices. Configure replication to occur during off-peak hours.
- B. Install Windows Server file servers in the Dallas and Miami offices. Use the File Replication Service to replicate the folders during off-peak hours.
- C. Implement a two-node file server cluster in the Chicago office using Microsoft Cluster Services.
- D. Implement a two-node file server cluster in each office using Microsoft Cluster Services.

Correct Answer: A

**QUESTION 4**

You work as the network administrator at ABC.com. The ABC.com network consists of a domain named ABC.com. The servers at the ABC.com network run Windows Server.

The ABC.com network has a Web server named ABC-SR11. During a routine monitoring you notice an increase in network traffic. Due to this you need to find out the MAC address of the workstation that initiated the transfers and the

command that was used. However, your action must not affect ABC-SR11.

What actions must you take?

- A. You must run the `ipconfig/registerdns`.
- B. You must use the Netmon utility.
- C. You must capture the IP traffic to ABC-SR11.
- D. You must Enable Server Message Block (SMB) signing on all the workstations.

Correct Answer: C

QUESTION 5

The ABC.com network consists of a single Active Directory domain named ABC.com. All servers on the ABC.com network run Windows Server.

The ABC.com domain contains two Active Directory sites named ABC-Site1 and ABC-Site2. ABC-Site1 contains a domain controller named ABC-DC1. ABC-Site2 contains a domain controller named ABC-DC2. Each domain controller is

configured as a DNS server and hosts the ABC.com Active Directory Integrated Zone.

Users in ABC-Site2 report that they are unable to log on to the domain.

On a client computer in ABC-Site2, you run the “`nslookup ABC-DC2`” command. The command returns the IP address of ABC-DC2.

You open Active Directory Users and Computers on the client computer but you are unable to connect to ABC-DC2.

How can you resolve this problem?

- A. Run the `ipconfig /registerdns` command on ABC-DC2.
- B. Configure a secondary zone on ABC-DC2 for the ABC.com domain and force replication from ABC-DC1.
- C. Use Active Directory Sites and Services to force Active Directory replication.
- D. Use the Services console to restart the Net Logon service on ABC-DC2.

Correct Answer: D