



JN0-692^{Q&As}

Service Provider Routing and Switching Support, Professional

Pass Juniper JN0-692 Exam with 100% Guarantee

Free Download Real Questions & Answers **PDF** and **VCE** file from:

<https://www.pass4itsure.com/jn0-692.html>

100% Passing Guarantee
100% Money Back Assurance

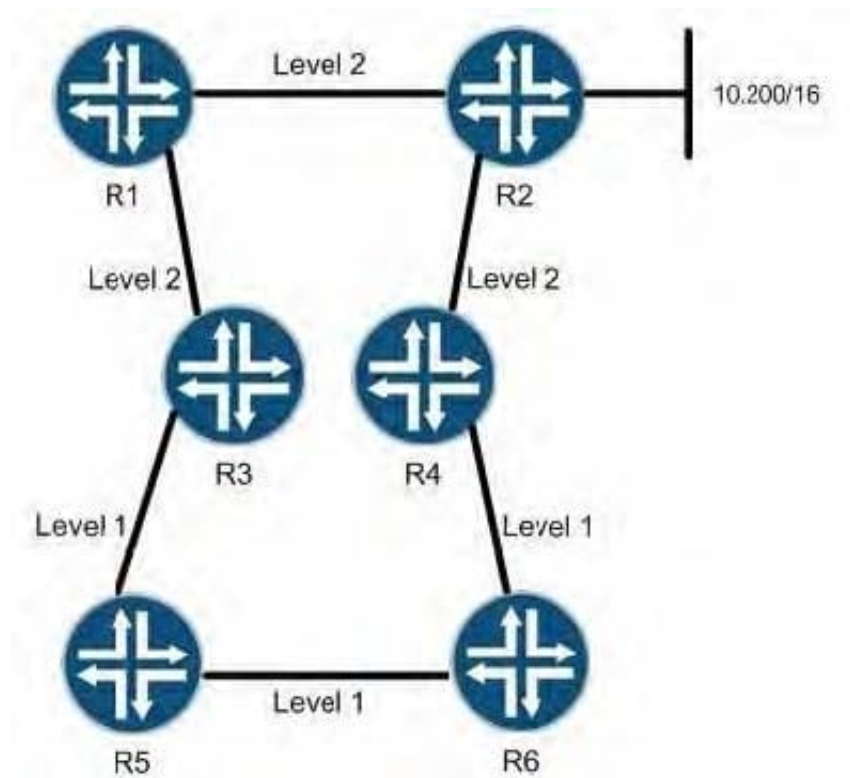
Following Questions and Answers are all new published by Juniper
Official Exam Center

- ⚙ **Instant Download** After Purchase
- ⚙ **100% Money Back** Guarantee
- ⚙ **365 Days** Free Update
- ⚙ **800,000+** Satisfied Customers



**QUESTION 1**

Click the Exhibit button



The 10.200/16 network is announced as an IS-IS route by R2 to its IS-IS neighbors. R3 and R4 are configured with an IS-IS export policy, which announces this route to R5 and R6.

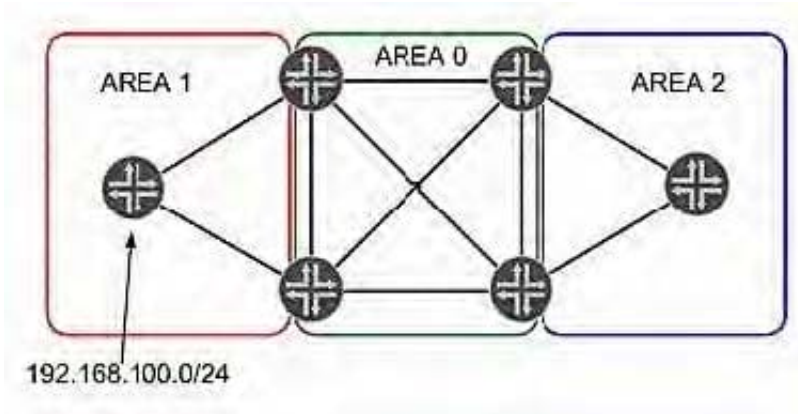
Which statement is true?

- A. When viewed on R5 the 10.200/16 route will be marked down.
- B. When viewed on R5 the 10.200/16 route will be marked up.
- C. The 10.200/16 route will not be visible on R5.
- D. The 10.200/16 route will be marked with the overload bit.

Correct Answer: A

QUESTION 2

Click the Exhibit button.



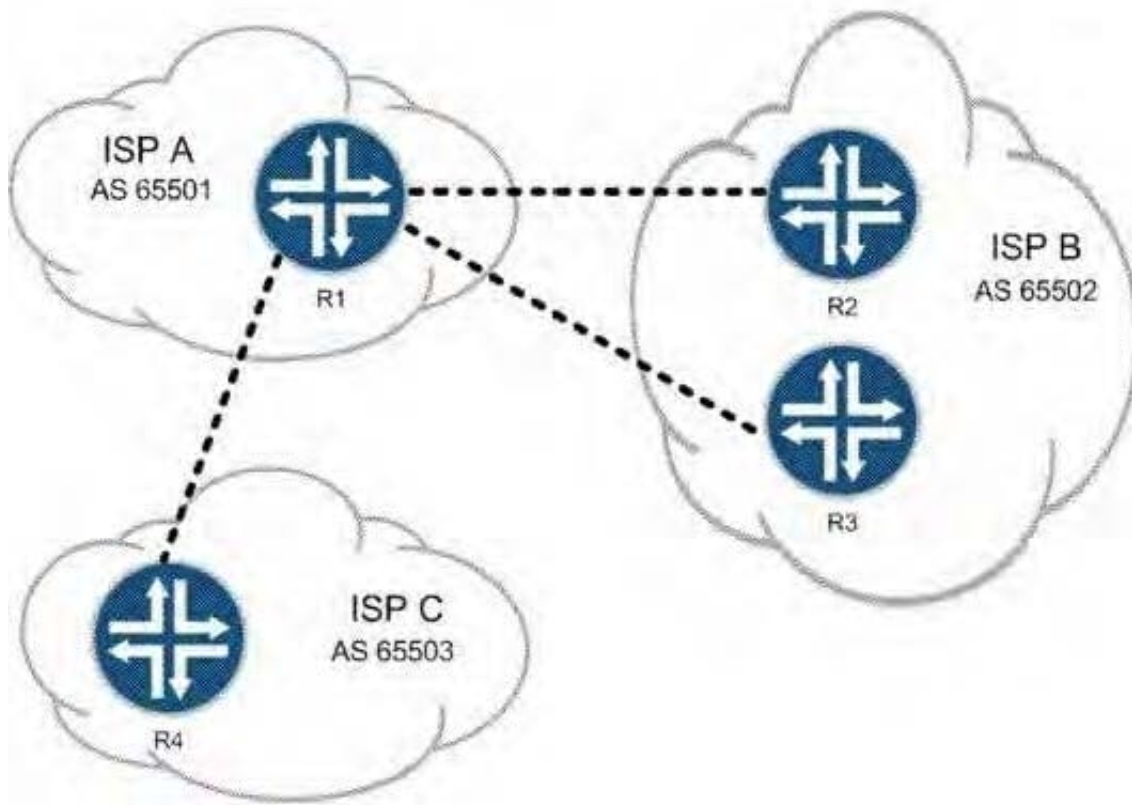
In the exhibit, Area 1 and Area 2 are configured as not-so-stubby areas. RIP network 192.168.100.0/24 is redistributed into OSPF in Area 1. Which three statements are true? (Choose three.)

- A. Network 192.168.100.0/24 is advertised in a Type 7 LSA in Area 1.
- B. Network 192.168.100.0/24 is advertised in a Type 7 LSA in Area 0.
- C. Network 192.168.100.0/24 is advertised in a Type 5 LSA in Area 0.
- D. The area border router between Area 0 and Area 2 converts network 192.168.100.0/24 to a Type 7 LSA.
- E. Area 2 does not see the network 192.168.100.0/24 in its link-state database.

Correct Answer: ACE

QUESTION 3

Click the Exhibit button.



You are an employee of ISP A. You must not allow traffic between ISP B and ISP C to cross your network, but customers of ISP B and ISP C must be able to reach your customers. Referring to the exhibit, which two actions would do this? (Choose two.)

- A. Use communities to identify and filter routes.
- B. Use policy to filter routes on AS number.
- C. Use origin code to identify and filter routes.
- D. Use the well-known no-advertise community.

Correct Answer: AD

QUESTION 4

An LDP Layer 2 circuit is configured for VPN A and VPN B. Which three statements are true regarding LDP Layer 2 circuit signaling? (Choose three.)

- A. PE-P LDP sessions use Martini encapsulation.
- B. PE-PE LDP sessions can be extended or adjacent.
- C. VRF tables are needed on the PEs.
- D. TCC encapsulation is needed to interconnect different interface types.
- E. The VC type field in the LDP header specifies the encapsulation type.



Correct Answer: BDE

QUESTION 5

You are a network administrator in charge of configuring CoS for your network. Your network includes a voice application with strict latency requirements, so that any packets delayed by more than 75 ms are effectively useless. When configuring the scheduler for this application, which feature ensures that you do not waste buffer space?

- A. rate-limit
- B. adaptive
- C. latency-limit
- D. temporal

Correct Answer: D

[JN0-692 Practice Test](#)

[JN0-692 Exam Questions](#)

[JN0-692 Braindumps](#)