



JN0-663^{Q&As}

Service Provider Routing and Switching, Professional (JNCIP-SP)

Pass Juniper JN0-663 Exam with 100% Guarantee

Free Download Real Questions & Answers **PDF** and **VCE** file from:

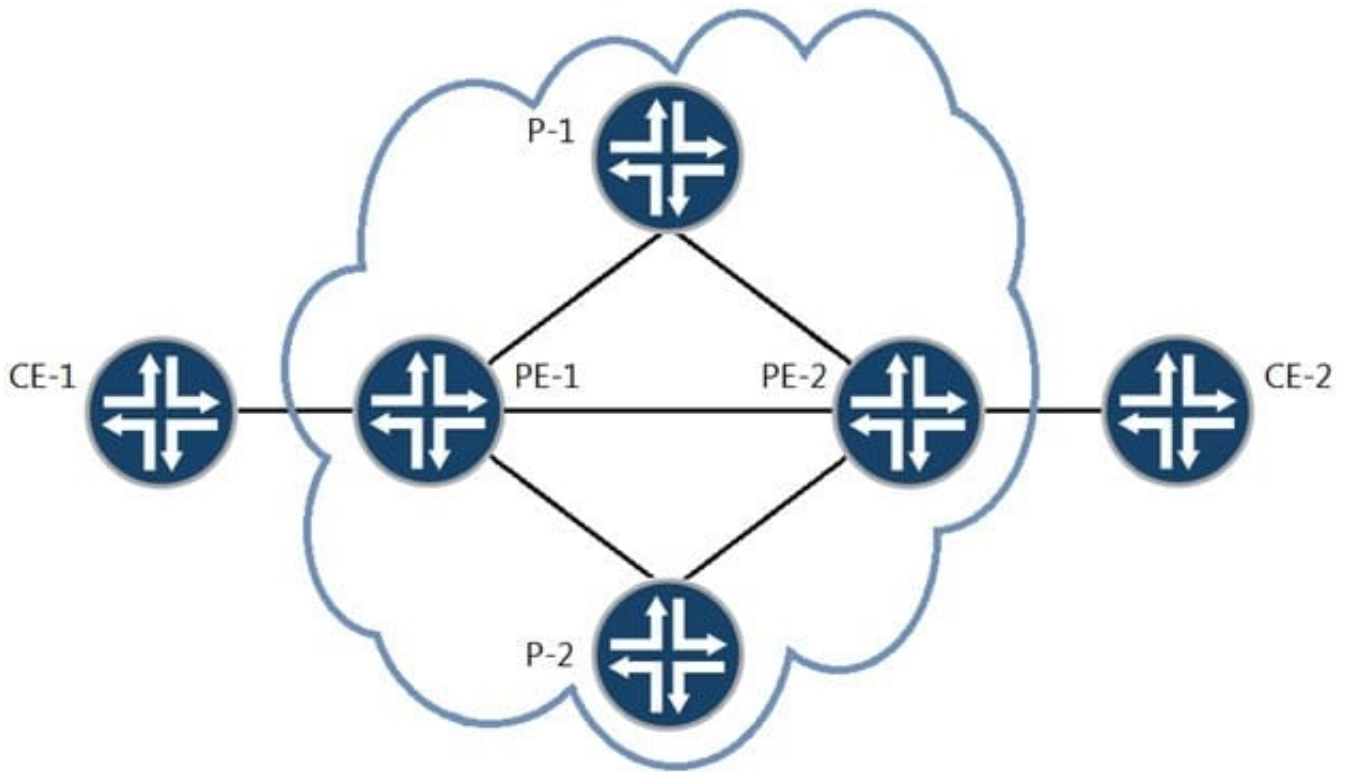
<https://www.pass4itsure.com/jn0-663.html>

100% Passing Guarantee
100% Money Back Assurance

Following Questions and Answers are all new published by Juniper
Official Exam Center

-  **Instant Download** After Purchase
-  **100% Money Back** Guarantee
-  **365 Days** Free Update
-  **800,000+** Satisfied Customers



**QUESTION 1**

A Layer 3 VPN exists in the provider network and the CE devices are connecting to the PE devices using BGP. The PE devices are receiving BGP routes from the CE devices and the PE devices have the CE BGP routes in their respective routing tables. However, the remote CE devices are not receiving the BGP routes.

Referring to the exhibit, what is the problem?

- A. A route distinguisher mismatch exists.
- B. The PE devices are detecting an AS loop.
- C. The CE devices are detecting an AS loop.
- D. A VRF target community mismatch exists.

Correct Answer: C

QUESTION 2

```
user@PE1> show route table vpnna.mvpn.0
vpnna.mvpn.0: 6 destinations, 9 routes (6 active, 1 holddown, 0 hidden)
+ = Active Route, - = Last Active, * = Both
1:10.1.1.1:1:10.1.1.1/240
*[MVPN/70] 04:09:44, metric2 1
Indirect
```



The route shown in the exhibit is an example of which type of next-generation MVPN route?

- A. Type 1 Intra-AS inclusive MVPN membership discovery
- B. Type 4 Selective MVPN autodiscovery route for leaf
- C. Type 3 Selective MVPN autodiscovery route
- D. Type 2 Inter-AS inclusive MVPN membership discovery

Correct Answer: A

Reference: <https://www.juniper.net/documentation/us/en/software/junos/multicast/topics/concept/type1intra-as-ad-routes-originating.html>

QUESTION 3

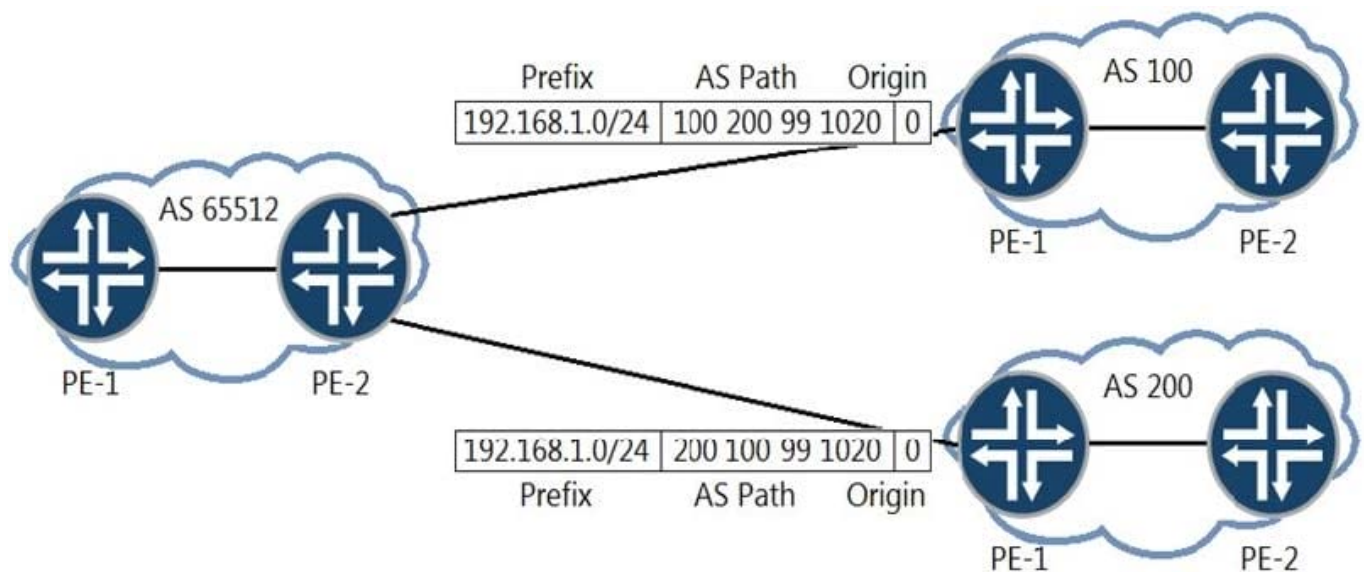
A customer recently migrated to IS-IS and is concerned about resource starvation when the routing protocol daemon (RPD) starts.

To resolve this issue and protect R2 and R3, which feature should you implement?

- A. Double the policy-options damping half-life timer to let the network settle.
- B. Implement the overload bit and timer to signal service availability.
- C. Deploy firewall filters to limit the prefix count in the route table.
- D. Use the forwarding-options ip-options-protocol-queue parameter to increase resources.

Correct Answer: B

QUESTION 4





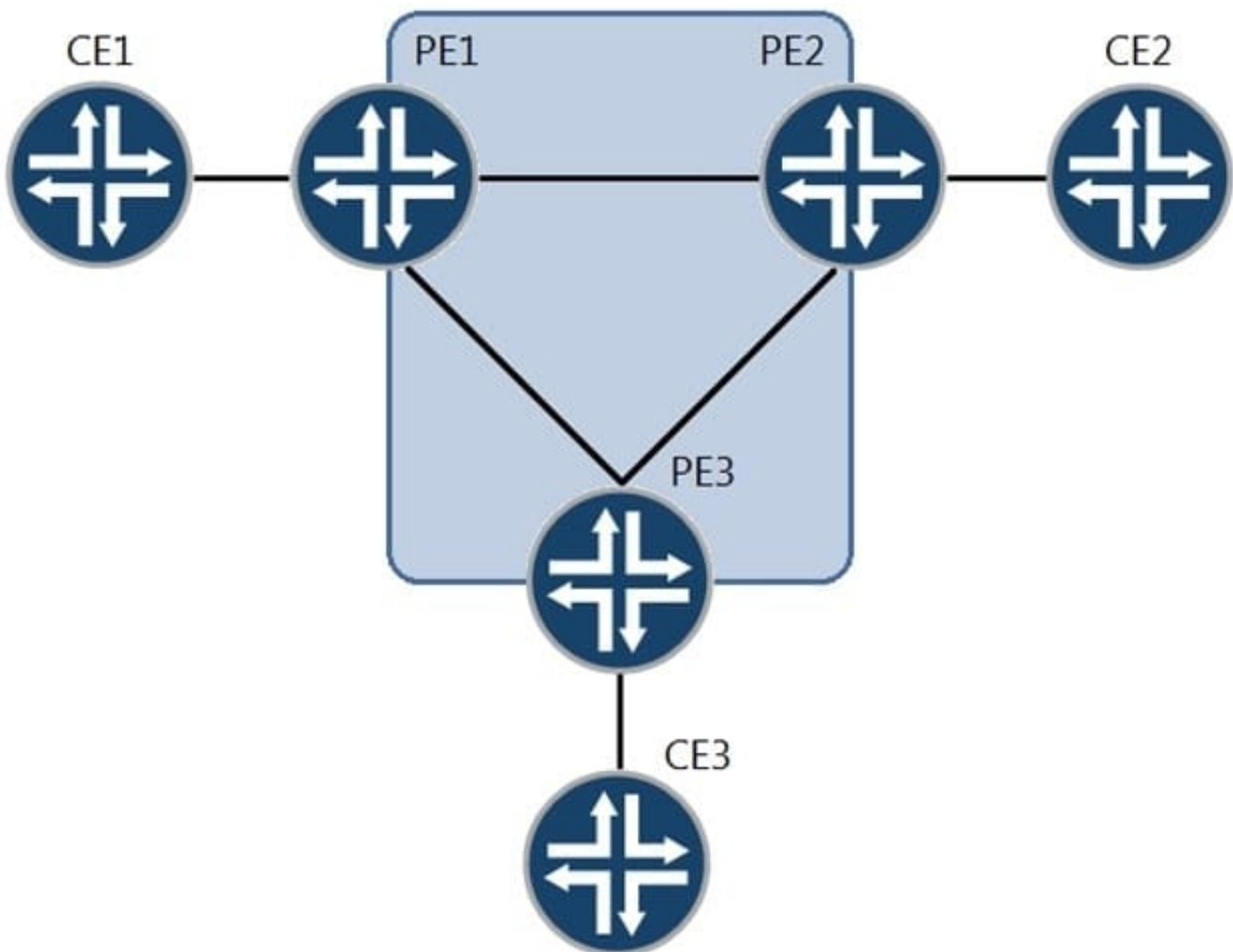
You are the administrator of AS 65512. You are learning the 192.168.1.0/24 prefix from both AS 100 and AS 200. You want traffic destined to the 192.168.1.0/24 prefix to exit your AS towards AS 200.

How would you accomplish this task?

- A. Configure an import routing policy on PE-2 to set a higher MED on the path learned from AS 100.
- B. Configure an import routing policy on PE-2 to modify the origin attribute on the path learned from AS 100.
- C. Configure an import routing policy on PE-2 to set a higher local preference value on the path learned from AS 200.
- D. Configure an import routing policy on PE-2 to append the AS path attribute on the path learned from AS 100.

Correct Answer: C

QUESTION 5



You are provisioning Layer 2 circuits between sites CE1, CE2, and CE3.



Referring to the exhibit, which statement is true?

- A. A point-to-multipoint LSP must be created between sites.
- B. Each site must have only one VLAN configured to the PE.
- C. Site PE1 must have a point-to-multipoint link configured towards the core.
- D. Two VLANs must be configured from PE 1 to CE 1.

Correct Answer: D

[Latest JN0-663 Dumps](#)

[JN0-663 Practice Test](#)

[JN0-663 Braindumps](#)