



JN0-662^{Q&As}

Service Provider Routing and Switching - Professional (JNCIP-SP)

Pass Juniper JN0-662 Exam with 100% Guarantee

Free Download Real Questions & Answers **PDF** and **VCE** file from:

<https://www.pass4itsure.com/jn0-662.html>

100% Passing Guarantee
100% Money Back Assurance

Following Questions and Answers are all new published by Juniper
Official Exam Center

- ⚙️ **Instant Download** After Purchase
- ⚙️ **100% Money Back** Guarantee
- ⚙️ **365 Days** Free Update
- ⚙️ **800,000+** Satisfied Customers



**QUESTION 1**

Click the exhibit button.

```
[edit routing-instances VPLS-1]
user@router# show
instance-type vpls;
vlan-tags outer 4000 inner 4001;
interface ge-1/0/1.400;
route-distinguisher 65004:12043;
vrf-target target:65005:100;
protocols {
    vpls {
        site 5 {
            site-identifier 5;
            interface ge-1/0/1.400 {
            }
        }
    }
}
```

What would be the expected outcome from the configuration shown in the exhibit?

- A. The VPLS instance would use a control-word instead of a tunnel-services interface, or no-tunnelservices parameter.
- B. The VPLS instance would default to using no-tunnel-services because a tunnel-services interface was not specified.
- C. The VPLS instance would cycle through all virtual tunnel interfaces on the router to find one to use.
- D. The VPLS instance would cycle through all physical interfaces configured on the router to find one to use.

Correct Answer: C

QUESTION 2

You are currently running BGP-based VPLS and Layer 3 VPNs. You are asked to consolidate the services and deploy EVPN to replace the VPLS and Layer 3 VPN deployments.

Which two EVPN route types will achieve this goal? (Choose two.)

- A. Type 5
- B. Type 4
- C. Type 2

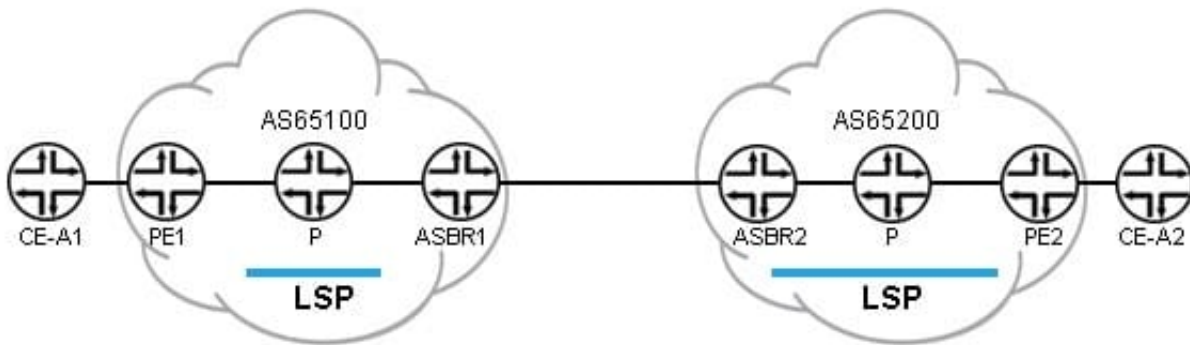


D. Type 7

Correct Answer: AC

QUESTION 3

Click the Exhibit button.



Referring to the exhibit, what information must be acquired about AS65200's configuration for AS65100 to build an interprovider VPN between PE1 to PE2?

- A. the route-distinguisher of PE2 and the loopback of PE2
- B. the route-distinguisher of PE2 and the loopback of ASBR2
- C. the route-target used for CE-A2 and the loopback of PE2
- D. the route-target used for CE-A2 and the loopback of ASBR2

Correct Answer: C

QUESTION 4

Click the Exhibit button.



```
user@host> show route table bgp.evpn.0

1:10.0.0.189:0::abcd0001000001::FFFF:FFFF/192 AD/ESI
    *[BGP/170] 03:06:10, localpref 100, from 10.0.C.189
    AS path: I, validation-state: unverified
    > to 10.0.0.33 via et-0/0/0.0
    to 10.0.0.35 via et-0/0/1.0
2:10.0.0.189:1::100::00:00:5e:00:01:01/304 MAC/IP
    *[BGP/170] 03:13:54, localpref 100, from 10.0.C.189
    AS path: I, validation-state: unverified
    > to 10.0.0.33 via et-0/0/0.0
    to 10.0.0.35 via et-0/0/1.0
3:10.0.0.189:1::100::10.0.0.189/248 IM
    *[BGP/170] 03:13:54, localpref 100, from 10.0.C.189
    AS path: I, validation-state: unverified
    > to 10.0.0.33 via et-0/0/0.0
    to 10.0.0.35 via et-0/0/1.0
4:10.0.0.189:0::abcd0001000001:10.0.0.189/296 ES
    *[BGP/170] 03:06:11, localpref 100, from 10.0.C.189
    AS path: I, validation state: unverified
    > to 10.0.0.33 via et-0/0/0.0
    to 10.0.0.35 via et-0/0/1.0
```

Referring to the exhibit, what is the correct prefix length of the route for the multihomed device?

- A. 192
- B. 304
- C. 296
- D. 248

Correct Answer: B

QUESTION 5

Your company has multiple upstream BGP connections to the Internet through ISP-A, ISP- B, and ISP-C. You want to ensure that all traffic coming into your network uses ISP-A.

How would you accomplish this task?

- A. Change the route preference to be higher on routes being advertised to ISP-B and ISP
- B.
- C. Prepend your AS number on routes being advertised to ISP-A.
- D. Change the local preference to be higher on routes being advertised to ISP-A.



E. Prepend your AS number on routes being advertised to ISP-B and ISP-C.

Correct Answer: D

[JN0-662 VCE Dumps](#)

[JN0-662 Exam Questions](#)

[JN0-662 Braindumps](#)