



# JN0-647<sup>Q&As</sup>

Enterprise Routing and Switching Exam

**Pass Juniper JN0-647 Exam with 100% Guarantee**

Free Download Real Questions & Answers **PDF** and **VCE** file from:

<https://www.pass4itsure.com/jn0-647.html>

100% Passing Guarantee  
100% Money Back Assurance

Following Questions and Answers are all new published by Juniper  
Official Exam Center

-  **Instant Download** After Purchase
-  **100% Money Back** Guarantee
-  **365 Days** Free Update
-  **800,000+** Satisfied Customers





### QUESTION 1

A packet enters the router and is subject to ingress processing. In which order is the packet processed?

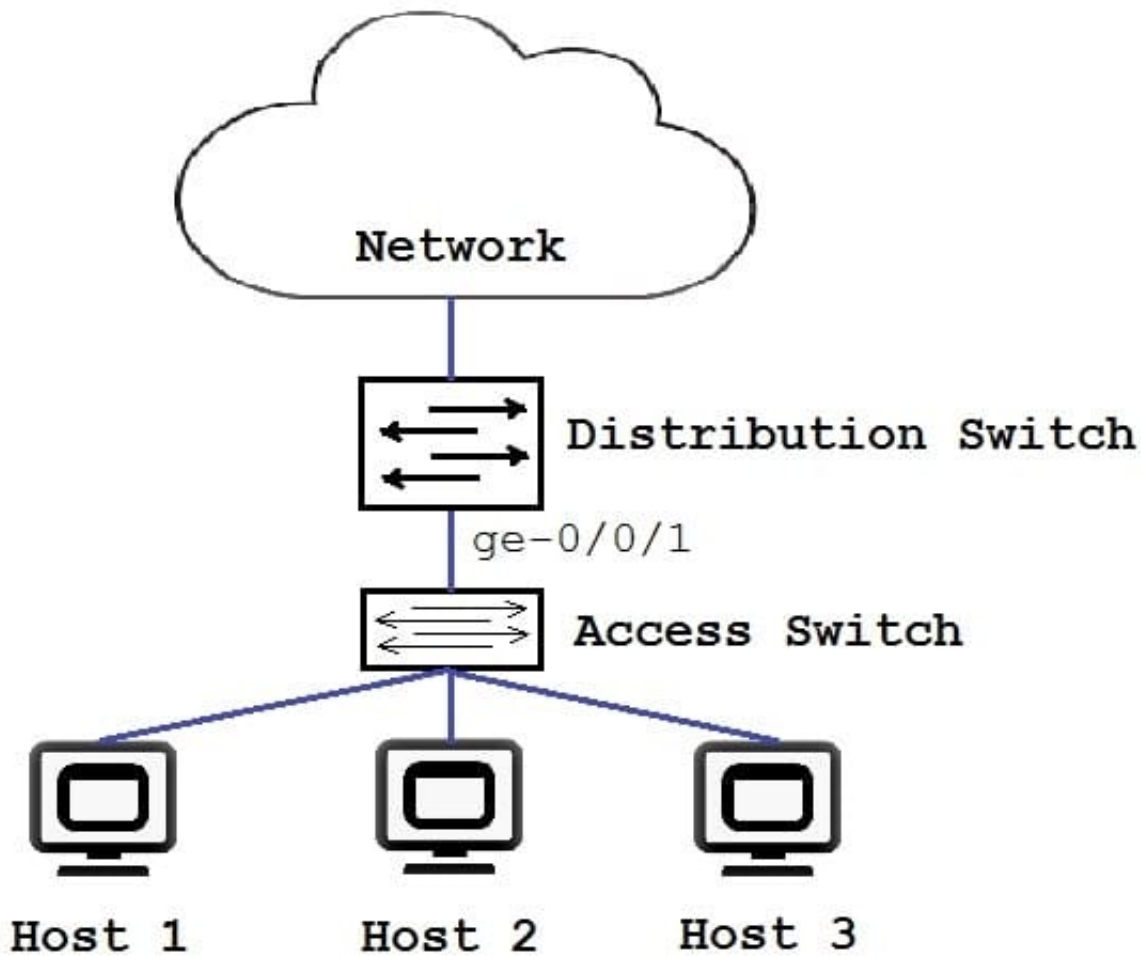
- A. Policer >BA classifier>multifield classifier>forwarding policy
- B. multifield classifier>BA classifier>policer>forwarding policy
- C. BA classifier>multifield classifier>policer>forwarding policy
- D. forwarding policy> BA classifier>multifield classifier>policer

Correct Answer: C

---

### QUESTION 2

Click the Exhibit button.



```
{master: 0} [edit]
user@switch#show protocols dot1x
authenticator {
  interface {
    ge-0/0/1.0 {
      supplicant single;
    }
  }
}
```

You have deployed the access control configuration to the distribution switch. Referring to the exhibit, which statement is true?

- A. All hosts connected to the access switch require authentication to access the network.
- B. All hosts connected to the access switch will have access to the network after one host authenticates.



- C. All hosts connected to the access switch will have access to the network without authentication.
- D. Only the first host to authenticate will have access to the network, other hosts will be blocked.

Correct Answer: B

### QUESTION 3

Click the Exhibit button.

```
user@R1> show ospf neighbor
Address      Interface    State      ID          Pri        Dead
10.222.0.21  ge-0/0/12.0 Full       10.222.1.4  128        34
10.222.0.13  ge-0/0/1.0  ExStart    10.222.1.3  128        31

user@R1> show ospf interface ge-0/0/1.0 detail
Interface    State      Area      DR ID      BDR ID
Nbrs
ge-0/0/1.0   BDR       0.0.0.1   10.222.1.3 10.222.1.5
1
Type: LAN, Address: 10.222.0.13, Mask: 255.255.255.252, MTU: 1500, Cost: 1

user@R2> show ospf interface ge-0/0/6.0 detail
Interface    State      Area      DR ID      BDR ID
Nbrs
ge-0/0/1.0   BDR       0.0.0.1   10.222.1.5 10.222.1.3
1
Type: LAN, Address: 10.222.0.13, Mask: 255.255.255.252, MTU: 1500, Cost: 1
```

You are troubleshooting an OSPF adjacency issue between R1 and R2. What is the reason for the ExStart state shown in the exhibit?

- A. R2 was elected as the designated router.
- B. R1 was elected as the backup designated router.
- C. R1 and R2 are using the same IP address.
- D. The MTU is not the default on R1 and R2.

Correct Answer: C

### QUESTION 4

Click the exhibit.



```
[edit class-of-service schedulers]
user@router# show
s-1 {
    transmit-rate percent 30;
    priority high;
}
s-2 {
    transmit -rate percent 5;
    priority medium-high;
}
s-3 {
    transmit-rate percent 30;
    priority medium-low;
}
s-4 {
    transmit-rate percent 35;
    priority low;
}
```

Referring to the exhibit, traffic handled by the s-1 scheduler is out of profile. Assuming bandwidth is available in this scenario, which statement is correct?

- A. Traffic handled by the s-1 scheduler is serviced immediately after traffic being serviced by the s-4 scheduler.
- B. Traffic handled by the s-1 scheduler is serviced immediately before traffic being serviced by the s-4 scheduler.
- C. Traffic handled by the s-1 scheduler is serviced immediately before traffic being serviced by the s-2 scheduler.
- D. Traffic handled by the s-1 scheduler is serviced immediately after traffic being serviced by the s-2 scheduler.

Correct Answer: D

---

#### QUESTION 5

A customer needs to pass Layer 2 protocols between sites.

Which protocol or standard would be required to implement connectivity on EX4300, EX3400, and EX2300 devices?

- A. Q-in-Q
- B. IGMP
- C. VPLS
- D. OSPF



Correct Answer: A

[Latest JN0-647 Dumps](#)

[JN0-647 PDF Dumps](#)

[JN0-647 Exam Questions](#)