



JN0-633^{Q&As}

Security, Professional (JNCIP-SEC)

Pass Juniper JN0-633 Exam with 100% Guarantee

Free Download Real Questions & Answers **PDF** and **VCE** file from:

<https://www.pass4itsure.com/jn0-633.html>

100% Passing Guarantee
100% Money Back Assurance

Following Questions and Answers are all new published by Juniper
Official Exam Center

- ⚙️ **Instant Download** After Purchase
- ⚙️ **100% Money Back** Guarantee
- ⚙️ **365 Days** Free Update
- ⚙️ **800,000+** Satisfied Customers



**QUESTION 1**

You are asked to secure your company's Web presence. This includes using an SRX Series device to inspect SSL traffic going to the Web servers in your DMZ.

Which two actions are required to accomplish this task? (Choose two.)

- A. Load your Web server's private key in the IDP configuration.
- B. Load your Web server's public key in the IDP configuration.
- C. Generate a root certificate on the SRX Series device for your Web servers.
- D. Specify the number of sessions in the SSL sensor configuration.

Correct Answer: AD

QUESTION 2

Given the following session output:

Session ID. , Policy nameE. default-policy-00/2, StatE. Active, Timeout: 1794, Valid In: 2001:660:1000:8c00::b/1053 --> 2001:660:1000:9002::aafe/80;tcp, IF. reth0.0, Pkts: 4, Bytes: 574 Out: 192.168.203.10/80 --> 192.168.203.1/24770;tcp, IF. reth1.0, Pkts: 3, Bytes:

Which statement is correct about the security flow session output?

- A. This session is about to expire.
- B. NAT64 is used.
- C. Proxy NDP is used for this session.
- D. The IPv4 Web server runs services on TCP port 24770.

Correct Answer: B

QUESTION 3

```
-- Exhibit -security { nat { destination { pool Web-Server {  
address 10.0.1.5/32;  
}  
rule-set From-Internet {  
from zone Untrust; rule To-Web-Server {  
match { source-address 0.0.0.0/0; destination-address 172.16.1.7/32;
```



```
} then { destination-nat pool Web-Server; } }  
  
}  
  
}  
  
zones {  
  
  security-zone Untrust {  
  
    address-book {  
  
      address Web-Server-External 172.16.1.7/32;  
  
      address Web-Server-Internal 10.0.1.5/32;  
  
    }  
  
    interfaces {  
  
      ge-0/0/0.0;  
  
    }  
  
    }  
  
    security-zone DMZ {  
  
      address-book {  
  
        address Web-Server-External 172.16.1.7/32;  
  
        address Web-Server-Internal 10.0.1.5/32;  
  
      }  
  
      interfaces {  
  
        ge-0/0/1.0;  
  
      }  
  
    }  
  
  } } -- Exhibit -
```

You are migrating from one external address block to a different external address block. You want to enable a smooth transition to the new address block. You temporarily want to allow external users to contact the Web server using both the existing external address as well as the new external address

192.168.1.1.

How do you accomplish this goal?

- A. Add address 192.168.1.1/32 under [edit security nat destination pool Web-Server].
- B. Change the address Web-Server-Ext objects to be address-set objects that include both addresses.



C. Change the destination address under [edit security nat destination rule-set From-Internet rule To-Web-Server match] to include both 172.16.1.7/32 and 192.168.1.2/32.

D. Create a new rule for the new address in the [edit security nat destination rule-set From- Internet] hierarchy.

Correct Answer: D

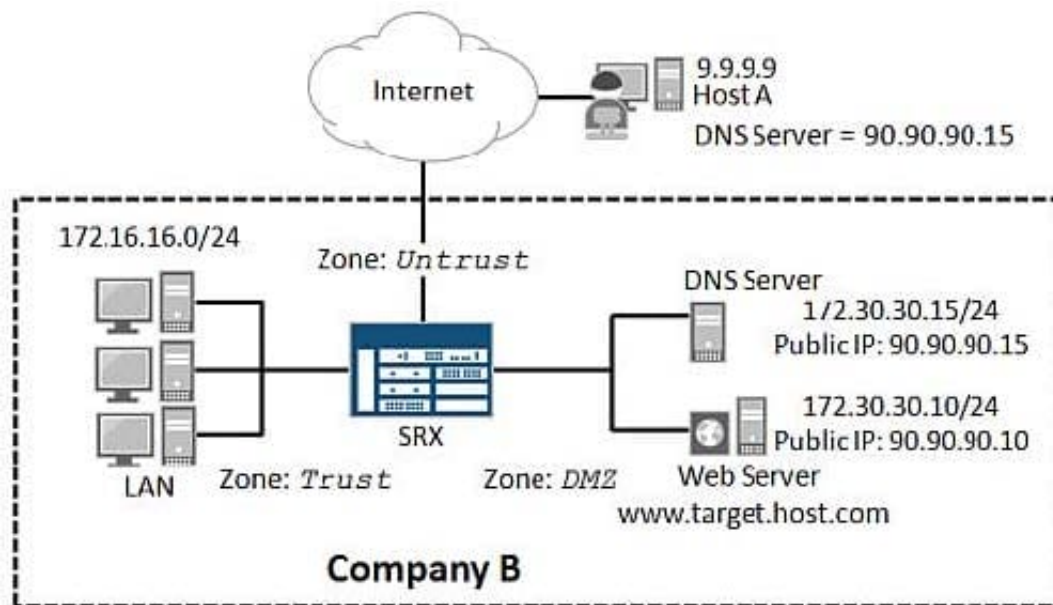
QUESTION 4

Click the Exhibit button.

Host A cannot resolve the `www.target.host.com` Web page when using its configured DNS server. As shown in the exhibit, Host A's configured DNS server and the Web server hosting the `www.target.host.com` Web page are in the same subnet. You have verified bidirectional reachability between Host A and the Web server hosting the Web page.

What would cause this behavior on the SRX device in Company B's network?

Exhibit:



A. DNS replication is enabled.

B. DNS doctoring is enabled.

C. DNS replication is disabled.

D. DNS doctoring is disabled.

Correct Answer: D

QUESTION 5

Which AppSecure module provides Quality of Service?



A. AppTrack

B. AppFW

C. AppID

D. AppQoS

Correct Answer: D

[JN0-633 Practice Test](#)

[JN0-633 Study Guide](#)

[JN0-633 Exam Questions](#)