



JN0-343^{Q&As}

Juniper Networks Certified Internet Specialist (JNCIS-ENT)

Pass Juniper JN0-343 Exam with 100% Guarantee

Free Download Real Questions & Answers **PDF** and **VCE** file from:

<https://www.pass4itsure.com/jn0-343.html>

100% Passing Guarantee
100% Money Back Assurance

Following Questions and Answers are all new published by Juniper
Official Exam Center

-  **Instant Download** After Purchase
-  **100% Money Back** Guarantee
-  **365 Days** Free Update
-  **800,000+** Satisfied Customers





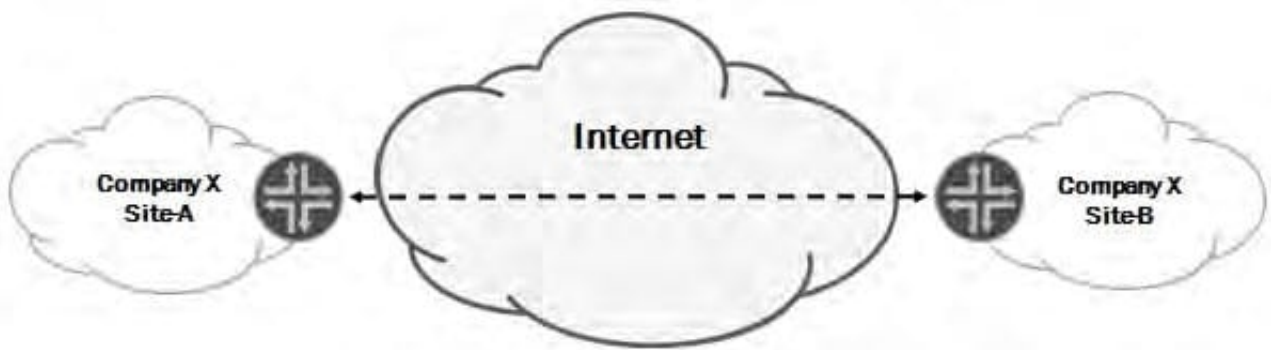
QUESTION 1

By default, what is the IP time-to-live (TTL) value for an EBGP session?

- A. 1
- B. 63
- C. 128
- D. 255

Correct Answer: A

QUESTION 2



An IP tunnel connects two routers over the Internet as shown in the exhibit.

Which two statements are correct? (Choose two.)

- A. A tunnel interface can serve as a next hop for static routes or participate in the network's IGP.
- B. Routing protocols will always prefer a tunnel over a physical link because the tunnel is a one-hop link with the lowest cost path.
- C. You can ensure the IP tunnel serves as the backup path through administrative settings such as cost and route preference.
- D. IP tunnels are subject to the same simple firewall rules as the direct link between the two routers, because the original IP header contents are open for the transit devices to see.

Correct Answer: AC

QUESTION 3

-- Exhibit --

```
user@switch# show firewall
```



```
family ethernet-switching {  
  filter block-traffic {  
    term count {  
      from {  
        source-address {  
          10.100.0.254/32;  
        }  
      }  
      then count blocked-subnet;  
    }  
    term reject-traffic {  
      from {  
        source-address {  
          10.100.0.254/32;  
        }  
      }  
      then discard;  
    }  
    term accept-rest {  
      then accept;  
    }  
  }  
}
```

-- Exhibit -You have a device that is sending a malicious packet to other devices in your Layer 2 network. You are asked to ensure that packets sent from this device are not allowed to enter your network. You must also keep track of the number of

packets that are being received. The device's IP address is 10.100.0.254. You have created and applied the firewall filter shown in the exhibit to the correct port. However, traffic is still being forwarded into the network.

What is causing the problem?

A. The reject-traffic term must be placed before the count term.



- B. The filter family is incorrect for a port based filter.
- C. Layer 2 firewall filters do not have visibility to the Layer 3 header information.
- D. The count term is implicitly accepting the traffic.

Correct Answer: D

QUESTION 4

Two routers functioning as DR other on a broadcast link will establish which kind of OSPF neighbor state with each other?

- A. Exchange
- B. 2Way
- C. ExStart
- D. Full

Correct Answer: B

QUESTION 5

Configuring bpdutimeout-action enables which protection mechanism?

- A. root protection
- B. BPDU protection
- C. loop protection
- D. RSTP protection

Correct Answer: C

[JN0-343 VCE Dumps](#)

[JN0-343 Practice Test](#)

[JN0-343 Study Guide](#)