



JN0-1301^{Q&As}

Data Center Design, Specialist (JNCDS-DC)

Pass Juniper JN0-1301 Exam with 100% Guarantee

Free Download Real Questions & Answers **PDF** and **VCE** file from:

<https://www.pass4itsure.com/jn0-1301.html>

100% Passing Guarantee
100% Money Back Assurance

Following Questions and Answers are all new published by Juniper
Official Exam Center

-  **Instant Download** After Purchase
-  **100% Money Back** Guarantee
-  **365 Days** Free Update
-  **800,000+** Satisfied Customers



**QUESTION 1**

Which two statements describe the Contrail vRouter? (Choose two.)

- A. It is forwarding plane that runs software on a virtualized server.
- B. It extends the network form physical routers and switches into an overlay network hosted in virtual server.
- C. It is responsible for providing the management, control, and analytics functions of the virtualized network.
- D. It provides the logically centralized control plane and management plane of the system.

Correct Answer: AC

QUESTION 2

You plan to deploy a set of SRX Series devices in an active/passive chassis cluster with an active/passive network infrastructure. Which two statements are true in this scenario? (Choose two.)

- A. End-host traffic is serviced through both SRX nodes during non-failure conditions.
- B. End-host traffic is serviced through one SRX node during non-failure conditions.
- C. In non-failure conditions, the end-host traffic across the fabric link is present.
- D. In non-failure conditions, the end-host traffic across the fabric link is eliminated.

Correct Answer: BD

QUESTION 3

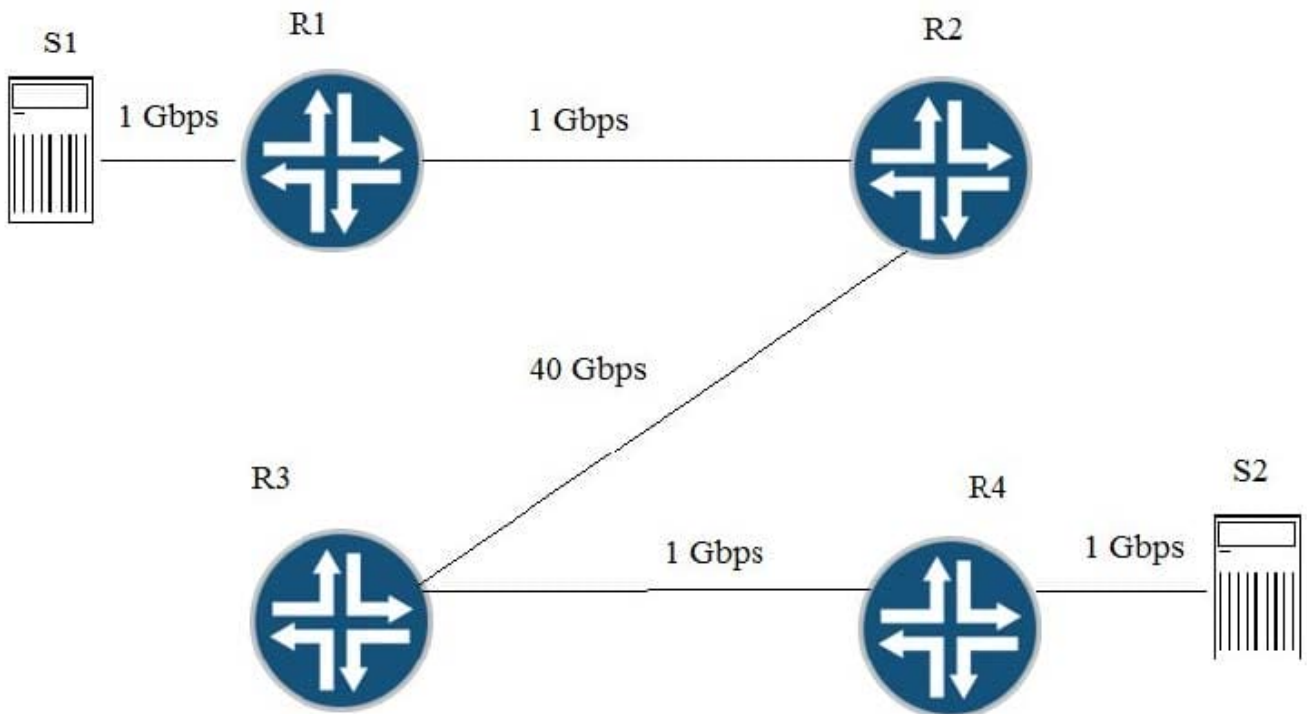
Your company is deploying a private cloud based on OpenStack and has selected Contrail Networking as its SDN controller. Which two statements are true in this scenario? (Choose two.)

- A. Underlay tunnels are established between virtualized and bare-metal servers.
- B. MPLS over UDP tunnels are supported.
- C. Overlay tunnels are established between virtualized and bare-metal servers.
- D. MPLS over GRE tunnels are supported.

Correct Answer: CD

QUESTION 4

Click the Exhibit button. Traffic congestion is noticed when sending traffic from S1 to S2. You must design a CoS deployment to address the traffic congestion issue. Referring to the exhibit, which two statements are true? (Choose two.)



- A. You should use BA classifiers on R1.
- B. You should use multifield classifiers on R2, R3, and R4.
- C. You should use multifield classifiers on R1.
- D. You should use BA classifiers on R2, R3, and R4.

Correct Answer: AB

QUESTION 5

You want to provide Layer 2 connectivity to a backup data center or to a disaster recovery site. What would you use to accomplish this task?

- A. Data Center Interconnect
- B. network redundancy
- C. SDN
- D. SAN protocols

Correct Answer: A