



JK0-018^{Q&As}

CompTIA Security+ E2C (2011 Edition)

Pass CompTIA JK0-018 Exam with 100% Guarantee

Free Download Real Questions & Answers **PDF** and **VCE** file from:

<https://www.pass4itsure.com/JK0-018.html>

100% Passing Guarantee
100% Money Back Assurance

Following Questions and Answers are all new published by CompTIA
Official Exam Center

- ⚙ **Instant Download** After Purchase
- ⚙ **100% Money Back** Guarantee
- ⚙ **365 Days** Free Update
- ⚙ **800,000+** Satisfied Customers













**QUESTION 1**

Determine the types of Attacks from right to specific action.

Select and Place:

Types of attacks

Task: Determine the types of attacks below by selecting an option from the dropdown list.

	Email sent to multiple users to a link to verify username/password on external site		<input type="text" value="Choose Attack Type"/>
	Phone calls made to CEO of organization asking for various financial data		<input type="text" value="Choose Attack Type"/>
	Phone call is made to individual stating there was an IT issue, and asked for the user's password over the phone		<input type="text" value="Choose Attack Type"/>
	You're on a social media site and an instant message pops up from a friend with a link to a new breakthrough diet		<input type="text" value="Choose Attack Type"/>
	A friend/colleague asks you questions of a personal nature, which could be considered typical password reset questions.		<input type="text" value="Choose Attack Type"/>

1. Phishing
2. Pharming
3. Vishing
4. Whaling
5. X-Mas
6. Spoofing
7. Hoax
8. Spam
9. Spim
10. Social Engineering

Correct Answer:



Types of attacks

Task: Determine the types of attacks below by selecting an option from the dropdown list.

	Email sent to multiple users to a link to verify username/password on external site		1. Phishing	2. Pharming
	Phone calls made to CEO of organization asking for various financial data		4. Whaling	5. X-Mas
	Phone call is made to individual stating there was an IT issue, and asked for the user's password over the phone		3. Vishing	6. Spoofing
	You're on a social media site and an instant message pops up from a friend with a link to a new breakthrough diet		9. Spim	7. Hoax
	A friend/colleague asks you questions of a personal nature, which could be considered typical password reset questions.		10. Social Engineering	8. Spam

QUESTION 2

For each of the given items, select the appropriate authentication category from the dropdown choices. Instructions: When you have completed the simulation, please select the Done button to submit.

Hot Area:



Authentication Category

Instructions: When you have completed the simulation, Please Select the Done Button to Submit

Select the appropriate authentication type for the following items:

Item	Response
Retina scan	<div><div></div><div>Something you have</div><div>Something you know</div><div>Something you are</div><div>All given authentication categories</div></div>
Smart card	<div><div></div><div>Something you have</div><div>Something you know</div><div>Something you are</div><div>All given authentication categories</div></div>
Hardware Token	<div><div></div><div>Something you have</div><div>Something you know</div><div>Something you are</div><div>All given authentication categories</div></div>
Password	<div><div></div><div>Something you have</div><div>Something you know</div><div>Something you are</div><div>All given authentication categories</div></div>
PIN number	<div><div></div><div>Something you have</div><div>Something you know</div><div>Something you are</div><div>All given authentication categories</div></div>
Fingerprint scan	<div><div></div><div>Something you have</div><div>Something you know</div><div>Something you are</div><div>All given authentication categories</div></div>



Correct Answer:



Authentication Category

Instructions: When you have completed the simulation, Please Select the Done Button to Submit



Select the appropriate authentication type for the following items:

Item	Response
Retina scan	<div><div></div><div>Something you have</div><div>Something you know</div><div>Something you are</div><div>All given authentication categories</div></div>
Smart card	<div><div></div><div>Something you have</div><div>Something you know</div><div>Something you are</div><div>All given authentication categories</div></div>
Hardware Token	<div><div></div><div>Something you have</div><div>Something you know</div><div>Something you are</div><div>All given authentication categories</div></div>
Password	<div><div></div><div>Something you have</div><div>Something you know</div><div>Something you are</div><div>All given authentication categories</div></div>
PIN number	<div><div></div><div>Something you have</div><div>Something you know</div><div>Something you are</div><div>All given authentication categories</div></div>
Fingerprint scan	<div><div></div><div>Something you have</div><div>Something you know</div><div>Something you are</div><div>All given authentication categories</div></div>

**QUESTION 3**



A Security administrator wants to implement strong security on the company smart phones and terminal servers located in the data center. Drag and Drop the applicable controls to each asset type. Instructions: Controls can be used multiple times and not all placeholders needs to be filled. When you have completed the simulation, Please select Done to submit.

Select and Place:

Controls	Company Manager Smart Phone	Data Center Terminal Server
Screen Locks		
Strong Password		
Device Encryption		
Remote Wipe		
GPS Tracking		
Pop-up Blocker		
Cable Locks		
Antivirus		
Host Based Firewall		
Proximity Reader		
Sniffer		
Mantrap		

Correct Answer:

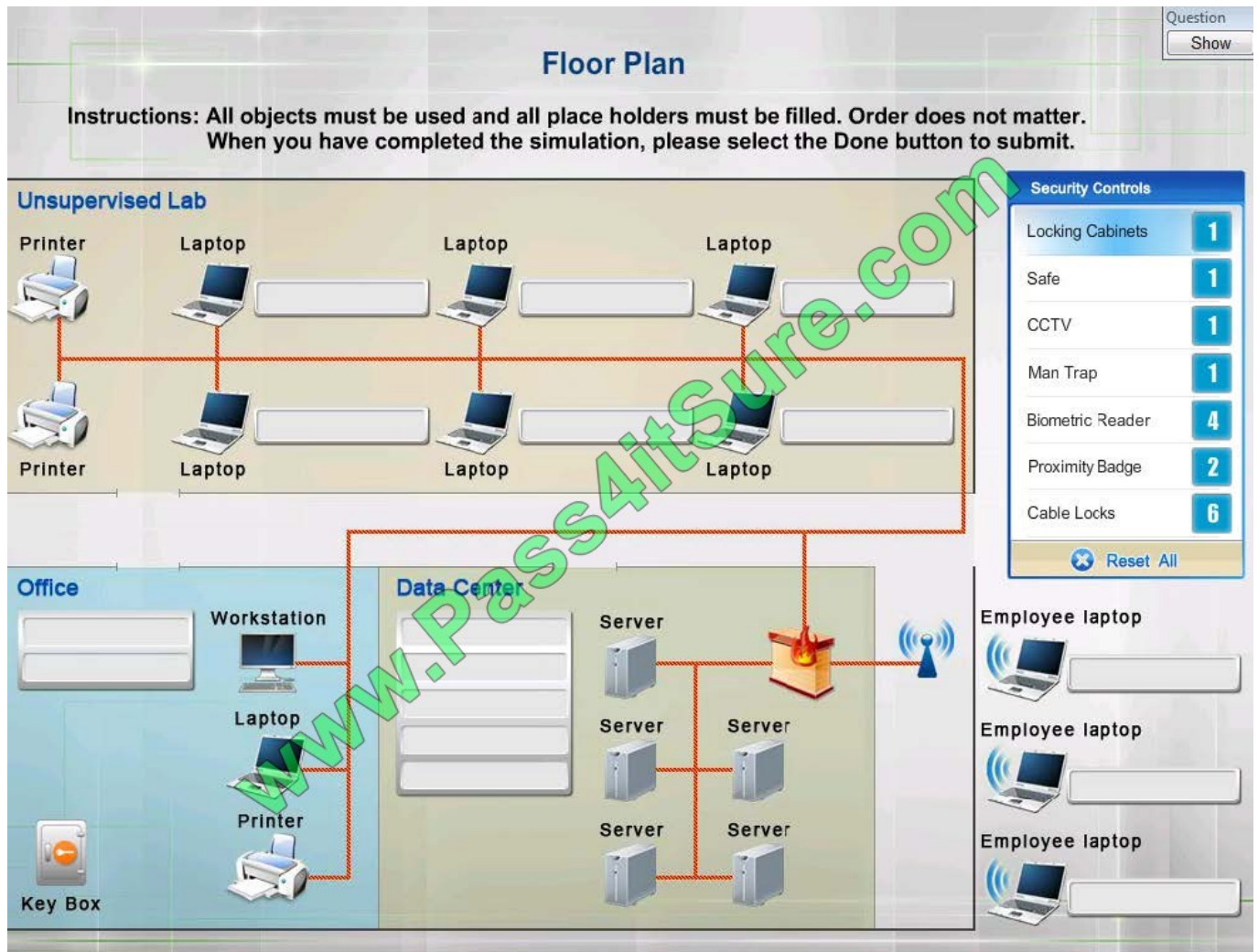


Controls	Company Manager Smart Phone	Data Center Terminal Server
		
	Screen Locks	Cable Locks
	Strong Password	Antivirus
	Device Encryption	Host Based Firewall
	Remote Wipe	Sniffer
	GPS Tracking	Mantrap
	Pop-up Blocker	
Proximity Reader		

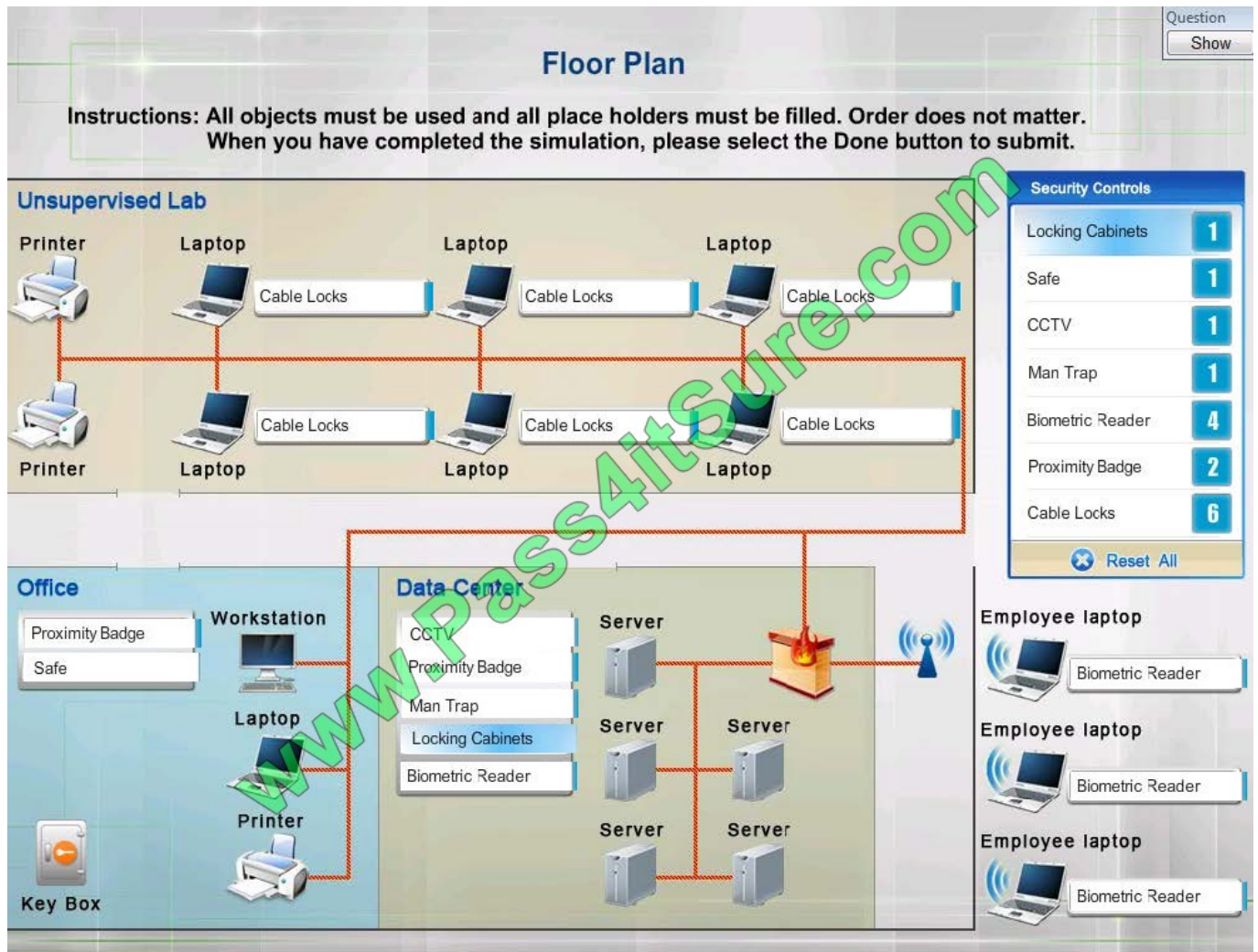
QUESTION 4

You have been tasked with designing a security plan for your company. Drag and drop the appropriate security controls on the floor plan-Instructions: All objects must be used and all place holders must be filled Order does not matter When you have completed the simulation, please select the Done button to submit.

Select and Place:



Correct Answer:



QUESTION 5

The security administrator has installed a new firewall which implements an implicit DENY policy by default Click on the firewall and configure it to allow ONLY the following communication.

1. The Accounting workstation can ONLY access the web server on the public network over the default HTTPS port. The accounting workstation should not access other networks.
2. The HR workstation should be restricted to communicate with the Financial server ONLY, over the default SCP port.
3. The Admin workstation should ONLY be able to access the servers on the secure network over the default TFTP port.

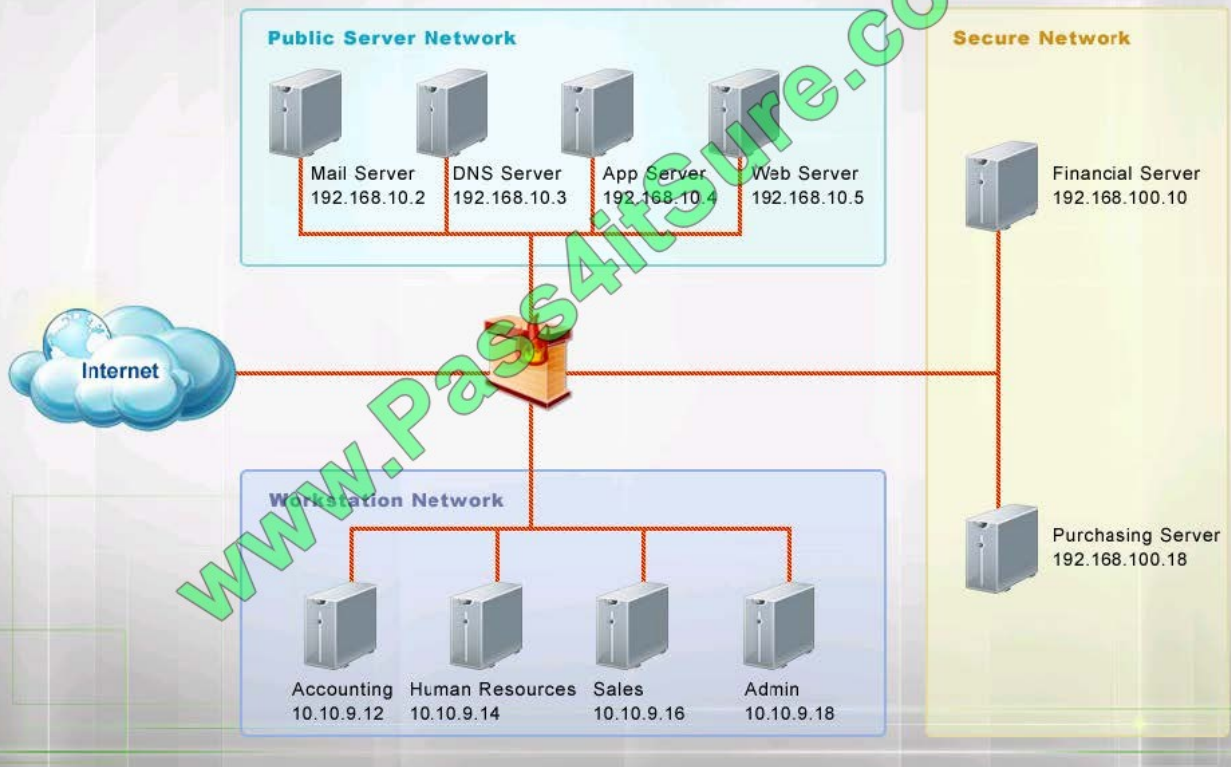
Instructions: The firewall will process the rules in a top-down manner in order as a first match The port number must be typed in and only one port number can be entered per rule Type ANY for all ports. The original firewall configuration can be reset at any time by pressing the reset button. Once you have met the simulation requirements, click save and then Done to submit.



Question
Show

Network Diagram

Instructions: The firewall will process the rules in a top-down manner in order as a first match. The port number must be typed in and only one port number can be entered per rule. Type ANY for all ports. The original firewall configuration can be reset at any time by pressing the reset button. Once you have met the simulation requirements, click save and then Done to submit.



Hot Area:



Firewall Rules					
Rule #	Source	Destination	Port (Only One Per Rule)	Protocol	Action
1	<div>192.168.10.2/32</div> <div>192.168.10.3/32</div> <div>192.168.10.4/32</div> <div>192.168.10.5/32</div> <div>10.10.9.12/32</div> <div>10.10.9.14/32</div> <div>10.10.9.18/32</div>	<div>Any</div> <div>192.168.10.2/32</div> <div>192.168.10.3/32</div> <div>192.168.10.4/32</div> <div>192.168.10.5/32</div> <div>192.168.100.10/32</div> <div>192.168.100.18/32</div>	<div>443</div> <div>22</div> <div>69</div>	<div>ANY</div> <div>TCP</div> <div>UDP</div>	<div>Permit</div> <div>Deny</div>
2	<div>192.168.10.2/32</div> <div>192.168.10.3/32</div> <div>192.168.10.4/32</div> <div>192.168.10.5/32</div> <div>10.10.9.12/32</div> <div>10.10.9.14/32</div> <div>10.10.9.18/32</div>	<div>Any</div> <div>192.168.10.2/32</div> <div>192.168.10.3/32</div> <div>192.168.10.4/32</div> <div>192.168.10.5/32</div> <div>192.168.100.10/32</div> <div>192.168.100.18/32</div>	<div>443</div> <div>22</div> <div>69</div>	<div>ANY</div> <div>TCP</div> <div>UDP</div>	<div>Permit</div> <div>Deny</div>
3	<div>192.168.10.2/32</div> <div>192.168.10.3/32</div> <div>192.168.10.4/32</div> <div>192.168.10.5/32</div> <div>10.10.9.12/32</div> <div>10.10.9.14/32</div> <div>10.10.9.18/32</div>	<div>Any</div> <div>192.168.10.2/32</div> <div>192.168.10.3/32</div> <div>192.168.10.4/32</div> <div>192.168.10.5/32</div> <div>192.168.100.10/32</div> <div>192.168.100.18/32</div>	<div>443</div> <div>22</div> <div>69</div>	<div>ANY</div> <div>TCP</div> <div>UDP</div>	<div>Permit</div> <div>Deny</div>
4	<div>192.168.10.2/32</div> <div>192.168.10.3/32</div> <div>192.168.10.4/32</div> <div>192.168.10.5/32</div> <div>10.10.9.12/32</div> <div>10.10.9.14/32</div> <div>10.10.9.18/32</div>	<div>Any</div> <div>192.168.10.2/32</div> <div>192.168.10.3/32</div> <div>192.168.10.4/32</div> <div>192.168.10.5/32</div> <div>192.168.100.10/32</div> <div>192.168.100.18/32</div>	<div>443</div> <div>22</div> <div>69</div>	<div>ANY</div> <div>TCP</div> <div>UDP</div>	<div>Permit</div> <div>Deny</div>

Correct Answer:



Firewall Rules					
Rule #	Source	Destination	Port (Only One Per Rule)	Protocol	Action
1	<div><div></div><div>192.168.10.2/32</div><div>192.168.10.3/32</div><div>192.168.10.4/32</div><div>192.168.10.5/32</div><div>10.10.9.12/32</div><div>10.10.9.14/32</div><div>10.10.9.18/32</div></div>	<div><div></div><div>Any</div><div>192.168.10.2/32</div><div>192.168.10.3/32</div><div>192.168.10.4/32</div><div>192.168.10.5/32</div><div>192.168.100.10/32</div><div>192.168.100.18/32</div></div>	<div><div></div><div>443</div><div>22</div><div>69</div></div>	<div><div></div><div>ANY</div><div>TCP</div><div>UDP</div></div>	<div><div></div><div>Permit</div><div>Deny</div></div>
2	<div><div></div><div>192.168.10.2/32</div><div>192.168.10.3/32</div><div>192.168.10.4/32</div><div>192.168.10.5/32</div><div>10.10.9.12/32</div><div>10.10.9.14/32</div><div>10.10.9.18/32</div></div>	<div><div></div><div>Any</div><div>192.168.10.2/32</div><div>192.168.10.3/32</div><div>192.168.10.4/32</div><div>192.168.10.5/32</div><div>192.168.100.10/32</div><div>192.168.100.18/32</div></div>	<div><div></div><div>443</div><div>22</div><div>69</div></div>	<div><div></div><div>ANY</div><div>TCP</div><div>UDP</div></div>	<div><div></div><div>Permit</div><div>Deny</div></div>
3	<div><div></div><div>192.168.10.2/32</div><div>192.168.10.3/32</div><div>192.168.10.4/32</div><div>192.168.10.5/32</div><div>10.10.9.12/32</div><div>10.10.9.14/32</div><div>10.10.9.18/32</div></div>	<div><div></div><div>Any</div><div>192.168.10.2/32</div><div>192.168.10.3/32</div><div>192.168.10.4/32</div><div>192.168.10.5/32</div><div>192.168.100.10/32</div><div>192.168.100.18/32</div></div>	<div><div></div><div>443</div><div>22</div><div>69</div></div>	<div><div></div><div>ANY</div><div>TCP</div><div>UDP</div></div>	<div><div></div><div>Permit</div><div>Deny</div></div>
4	<div><div></div><div>192.168.10.2/32</div><div>192.168.10.3/32</div><div>192.168.10.4/32</div><div>192.168.10.5/32</div><div>10.10.9.12/32</div><div>10.10.9.14/32</div><div>10.10.9.18/32</div></div>	<div><div></div><div>Any</div><div>192.168.10.2/32</div><div>192.168.10.3/32</div><div>192.168.10.4/32</div><div>192.168.10.5/32</div><div>192.168.100.10/32</div><div>192.168.100.18/32</div></div>	<div><div></div><div>443</div><div>22</div><div>69</div></div>	<div><div></div><div>ANY</div><div>TCP</div><div>UDP</div></div>	<div><div></div><div>Permit</div><div>Deny</div></div>



To Read the [Whole Q&As](#), please purchase the [Complete Version](#) from [Our website](#).

Try our product !

100% Guaranteed Success

100% Money Back Guarantee

365 Days Free Update

Instant Download After Purchase

24x7 Customer Support

Average 99.9% Success Rate

More than 800,000 Satisfied Customers Worldwide

Multi-Platform capabilities - [Windows](#), [Mac](#), [Android](#), [iPhone](#), [iPod](#), [iPad](#), [Kindle](#)

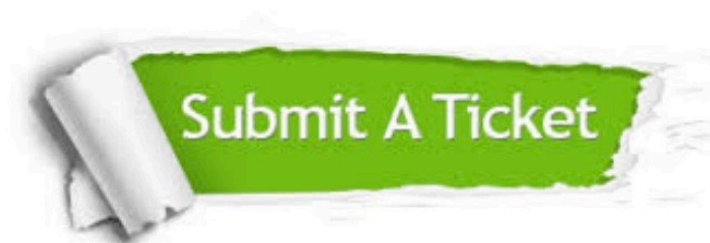
We provide exam PDF and VCE of Cisco, Microsoft, IBM, CompTIA, Oracle and other IT Certifications. You can view Vendor list of All Certification Exams offered:

<https://www.pass4itsure.com/allproducts>

Need Help

Please provide as much detail as possible so we can best assist you.

To update a previously submitted ticket:



 One Year Free Update <p>Free update is available within One Year after your purchase. After One Year, you will get 50% discounts for updating. And we are proud to boast a 24/7 efficient Customer Support system via Email.</p>	 Money Back Guarantee <p>To ensure that you are spending on quality products, we provide 100% money back guarantee for 30 days from the date of purchase.</p>	 Security & Privacy <p>We respect customer privacy. We use McAfee's security service to provide you with utmost security for your personal information & peace of mind.</p>
---	---	--

Any charges made through this site will appear as Global Simulators Limited.

All trademarks are the property of their respective owners.

Copyright © pass4itsure, All Rights Reserved.