



HPE6-A80^{Q&As}

Aruba Certified Design Expert Written

Pass HP HPE6-A80 Exam with 100% Guarantee

Free Download Real Questions & Answers **PDF** and **VCE** file from:

<https://www.pass4itsure.com/hpe6-a80.html>

100% Passing Guarantee
100% Money Back Assurance

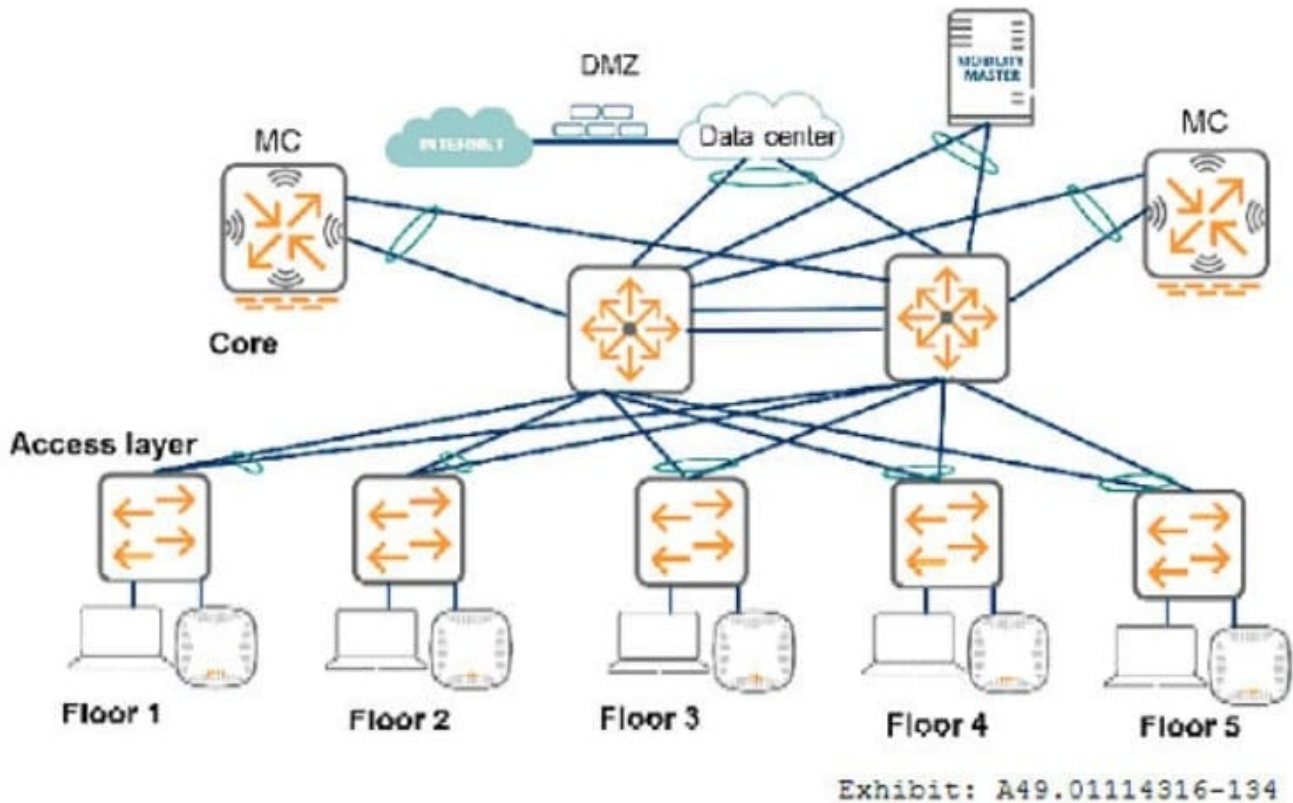
Following Questions and Answers are all new published by HP Official Exam Center

- ⚙️ **Instant Download** After Purchase
- ⚙️ **100% Money Back** Guarantee
- ⚙️ **365 Days** Free Update
- ⚙️ **800,000+** Satisfied Customers



**QUESTION 1**

Refer to the exhibit.



The exhibit shows the topology for a new Aruba solution. The MCs are in a cluster and support all of the wireless traffic in

the network. The core switches route all traffic and support all VLANs. The access layer switches do NOT use tunneled node or dynamic segmentation.

The customer has indicated that it has these VLANs for user devices.

*

VLAN 11 for Floor 1 employee wired devices

*

VLAN 12 for Floor 2 employee wired devices

*

VLAN 13 for Floor 3 employee wired devices

*

VLAN 14 for Floor 4 employee wired devices



*

VLAN 15 for Floor 5 employee wired devices

*

VLAN 101 for all employee wireless devices

*

VLAN 102 for all guest wireless devices

In which locations should the architect plan the VLANs?

A.

VLANs 11-15 on one MC. VLANs 101 and 102 on the other MC. (Other VLANs will be used on the access layer switches.)

B.

VLANs 11-15, 101, and 102 on both MCs. (Other VLANs will be used on the access layer switches.)

C.

VLANs 11-15 on the access layer switches on the corresponding floor; VLAN 101 on one MC and VLAN 102 on the other MC

D.

VLANs 11-15 on the access layer switches on the corresponding floor; VLANs 101 and 102 on both MCs.

Correct Answer: C

QUESTION 2

A mall requires a wireless network upgrade to 802.11n. The company that owns the mall wants to provide the APs for the entire mall. However, several of the larger national chain retailers with spaces in the mall want to offer wireless services with their own SSIDs. These individual retailers also have their own wireless guest services and wireless client devices. They have their own corporate infrastructure and want to handle all of this wireless traffic on their own, including terminating the traffic on their own controllers. The mall requires redundancy for its services, but the retailers do not.

Which plan for mobility controllers (MCs) and mobility master (MM) meets the needs of this scenario?

A. a pair of MMs for the mall company, but not MCs: MMs control one MC for each retailer with its own SSIDs

B. two MCs for the mall company and for all of the retailers, both controlled by the same pair of MMs

C. two MCs for the mall company controlled by a pair of MMs; one standalone MC for each retailer with its own SSIDs

D. two MCs for the mall company and one MC for each retailer with its own SSIDs, all controlled by the same pair of MMs

Correct Answer: A

**QUESTION 3**

An indoor sports stadium has 5,000 seats in two rings:

The stadium has a ceiling height of 72 feet (22 m).

There is a catwalk around the perimeter of the stadium that is 54 feet (13 m) from the floor.

There are two scoreboards at either end of the stadium

The construction of the stadium is concrete and steel.

The customer has indicated a preference for overhead coverage, and the wireless network should support 3500 concurrent clients. The architect plans to install the APs on the catwalk to service sections of the floor below

Which type of antennas are recommended for the APs that provide the overhead coverage?

- A. downtilt
- B. high gain directional
- C. high gain omnidirectional
- D. vagi

Correct Answer: B

QUESTION 4

A customer requires new MCs for a large multi-site network with about 600 AP-535S and 30,000 wireless clients. The customer requires redundancy for the MCs, with each MC being able to handle the full load in a failover situation. The

network should be able to sustain the loss of a controller with stateful failover within seconds. It should be able to undergo software upgrades without downtime.

The architect has recommended two 7240XM MCs. The customer points out that 7220 MCs can support their requirements and wonders why the architect recommended the 7240XMS.

What should the architect explain?

- A. The 7240XM MCs have better redundant power supplies and fan tray component capabilities than 7220 MCs.
- B. The 7240XM MCs can support full CPsec tunnels with this number of APs, while the 7220 MCs cannot.
- C. The 7240XM MCs provide a higher number of concurrent GRE tunnels to support 600 APs with MCS in L2 clustering.
- D. The 7240XM MCs are required to support the large number of wireless clients in this network

Correct Answer: D

**QUESTION 5**

A hospital needs an upgrade to 802.11ax for its wireless network, which needs to provide complete coverage. The hospital has a concrete exterior and uses drywalls for all of the interior walls with a few exceptions as mandated for safety. The building has 10-foot (3 m) ceilings. The hospital prefers to avoid the deployment of APs in rooms if possible. Exceptions include reception areas and lounges. The wireless network must support wireless medical devices, voice communicators for medical staff, laptops in nurse stations, medical staff tablets, and visitor and patient personal devices. All of these devices support both the 2.4GHz

and 5GHz band.

The exhibits below show one wing of one floor of the hospital. This wing is about 25,000 square feet (2,300 sq. m). The unlabeled rooms along the bottom of the wing are patient rooms. Other rooms such as lounges and the MRJ room are

labeled. This area has:

*

up to 50 concurrent patients and visitors, who might have up to two devices

*

about 200 medical and other types of wireless devices

The architect has already planned to place APs in stairwells on another floor.

Which AP plan for this wing of this floor meets the customer needs?

A.

Option A

B.

Option B

C.

Option C

D.

Option D

Correct Answer: A



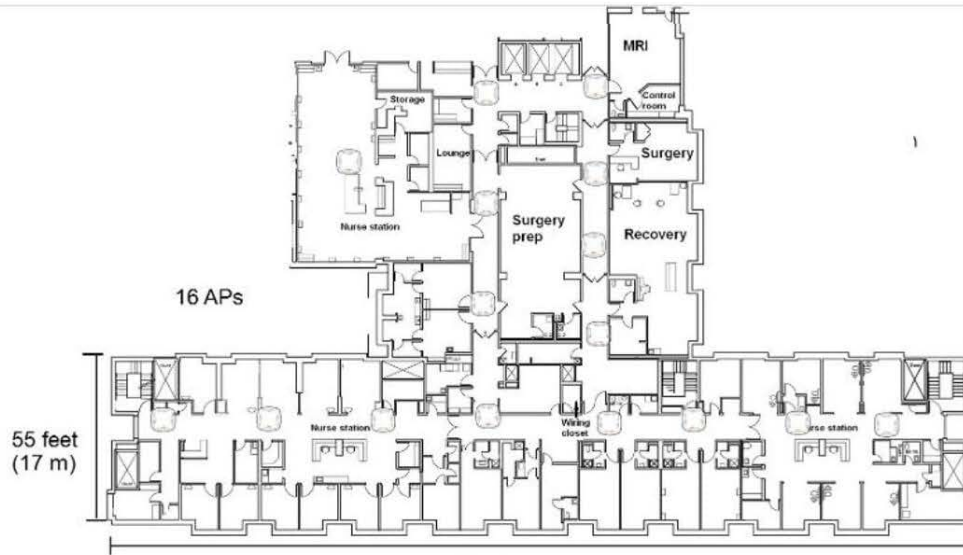
* 40 concurrent staff members, who might have up to three devices

* about 200 medical and other types of wireless devices

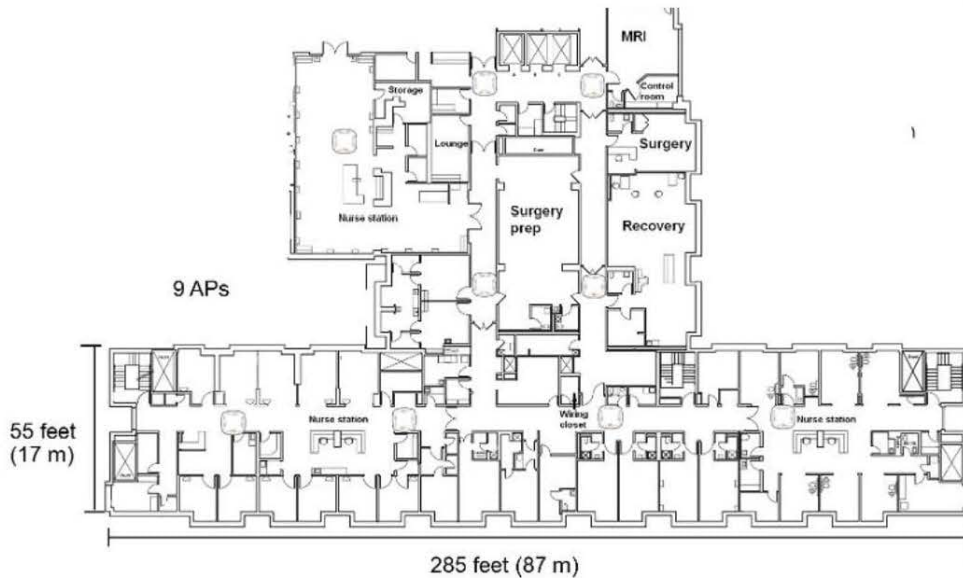
The architect has already planned to place APs in stairwells on another floor.

Which AP plan for this wing of this floor meets the customer needs?

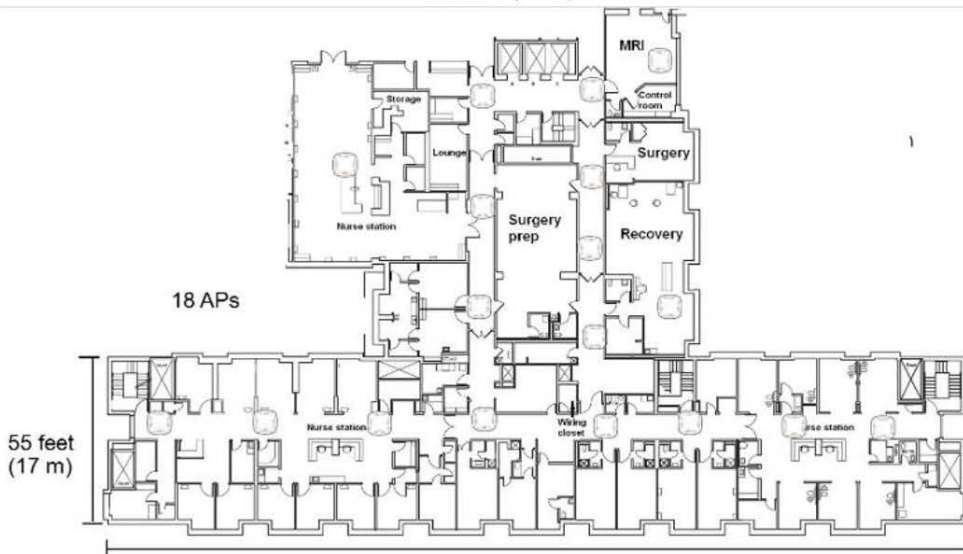
Ⓐ.



Ⓑ.



Ⓒ.

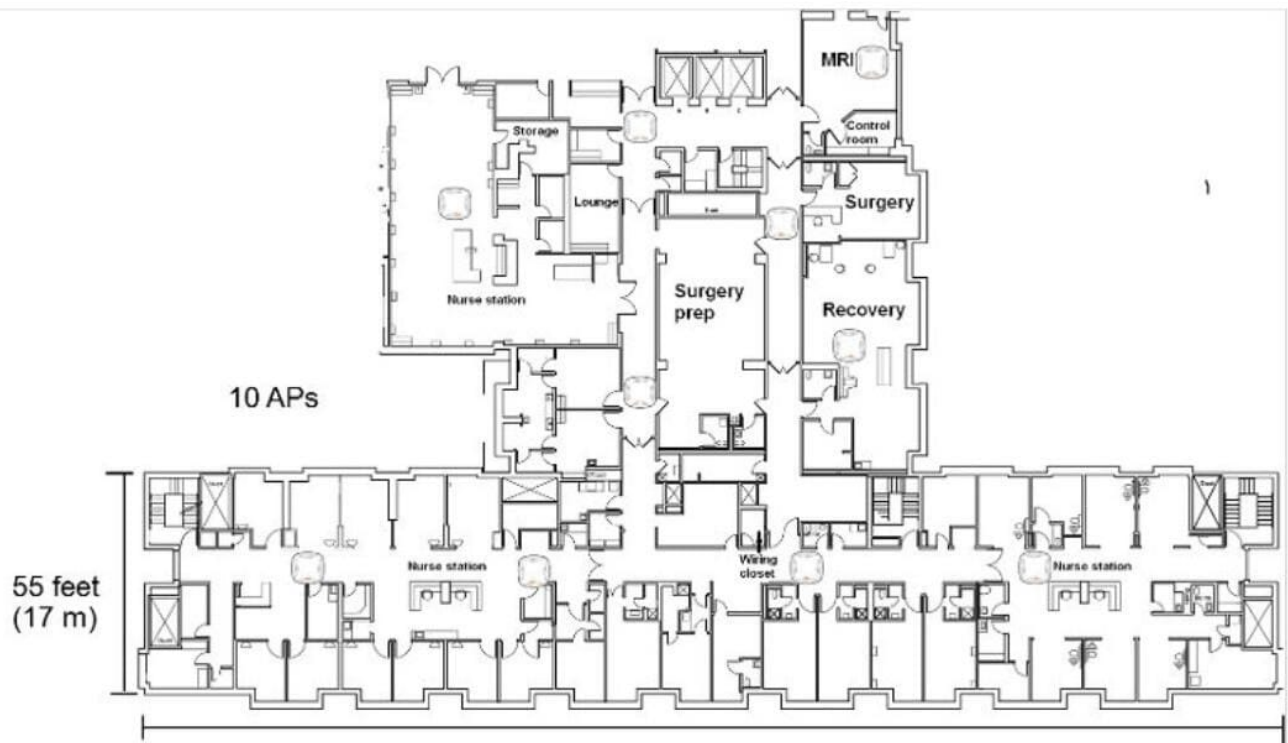




*

40 concurrent staff members, who might have up to three devices

● D.



[HPE6-A80 Practice Test](#)

[HPE6-A80 Study Guide](#)

[HPE6-A80 Exam Questions](#)