



# HPE6-A79<sup>Q&As</sup>

Aruba Certified Mobility Expert Written Exam

**Pass HP HPE6-A79 Exam with 100% Guarantee**

Free Download Real Questions & Answers **PDF** and **VCE** file from:

<https://www.pass4itsure.com/hpe6-a79.html>

100% Passing Guarantee  
100% Money Back Assurance

Following Questions and Answers are all new published by HP Official Exam Center

- ⚙ **Instant Download** After Purchase
- ⚙ **100% Money Back** Guarantee
- ⚙ **365 Days** Free Update
- ⚙ **800,000+** Satisfied Customers



**QUESTION 1**

A software development company has 764 employees who work from home. The company also has small offices located in different cities throughout the world. During working hours, they use RAPs to connect to a datacenter to upload software code as well as interact with databases.

In the past two month, cabling issues have occurred connection to the 7240XM Mobility Controller (MC) that runs ArubaOS 8 and terminates the RAPs. These RAPs disconnect, affecting the users connected to the RAPs. This also causes problems with code uploads and database synchronizations. Therefore, the company decides to add a second 7240XM controller for redundancy.

How should the network administrator deploy both controllers in order to provide the redundancy while preventing failover events from disconnecting users?

- A. Connect both controllers with common VLANs, and create an HA fast failover group with public addresses in the internet VLAN.
- B. Connect both controllers with common VLANs, and create an L2-connected cluster using public addresses in the internet VLAN.
- C. Connect both controllers with different VLANs, and create an L2-connected cluster using public addresses in the internet VLAN.
- D. Connect both controllers with common VLANs, and configure LMS/BLMS values equal to public addresses in the internet VLAN.

Correct Answer: A

---

**QUESTION 2**

A company with 50 small coffee shops in a single country requires a single mobility solution that solves connectivity needs at both the main office and branch locations. Coffee shops must be provisioned with local WiFi internet access for customers.

The shops must also have a private WLAN that offers communication to resources at the main office to upload sales, request supplies through a computer system, and make phone calls if needed. In order to simplify network operations, network devices at the coffee shops should be cloud managed.

Which technologies best meet the company needs at the lowest cost?

- A. IAP VPN
- B. SD-Branch
- C. Activate with RAPs
- D. BOC with CAPs

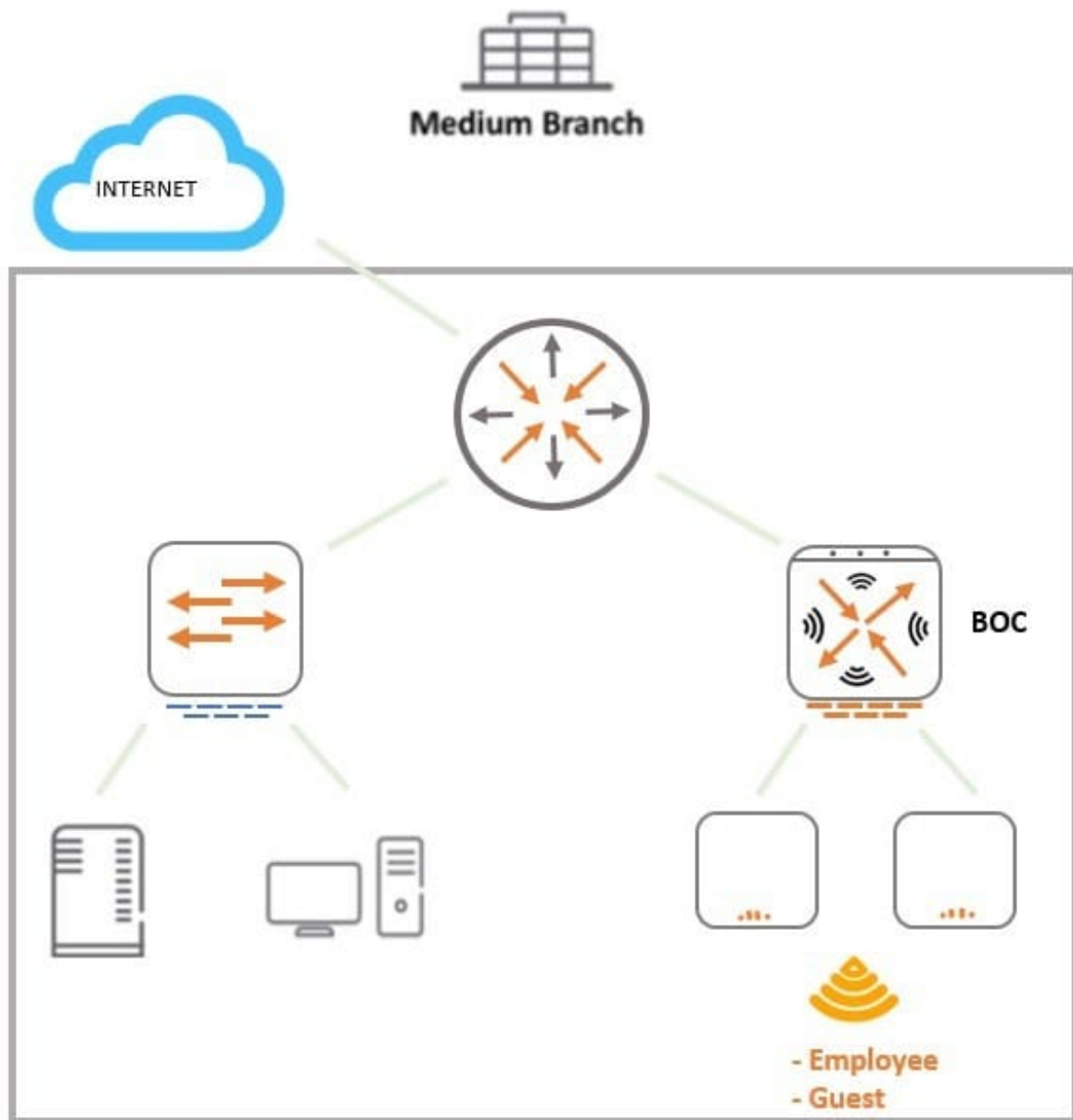
Correct Answer: B

---

**QUESTION 3**



Refer to the exhibit.



A 7008 Branch Office Controller (BOC) is deployed in a remote office behind a core router. This core does not support 802.1q encapsulation. The Mobility Controller (MC) is the gateway for two tunneling mode SSIDs, as shown in the exhibit. Which two different configuration options ensure that wireless users are able to reach the branch network through the router? (Choose two.)

- A. Configure all ports of the BOC as access ports on the controller VLAN, and change the gateway of clients to the core router IP.
- B. Configure the uplink of the BOC as an access port on the controller VLAN, and add static routes in the router for the SSID VLAN subnets.
- C. Configure the uplink of the BOC as a trunk port that permits the controller and the SSID VLANs. The controller VLAN



must be native.

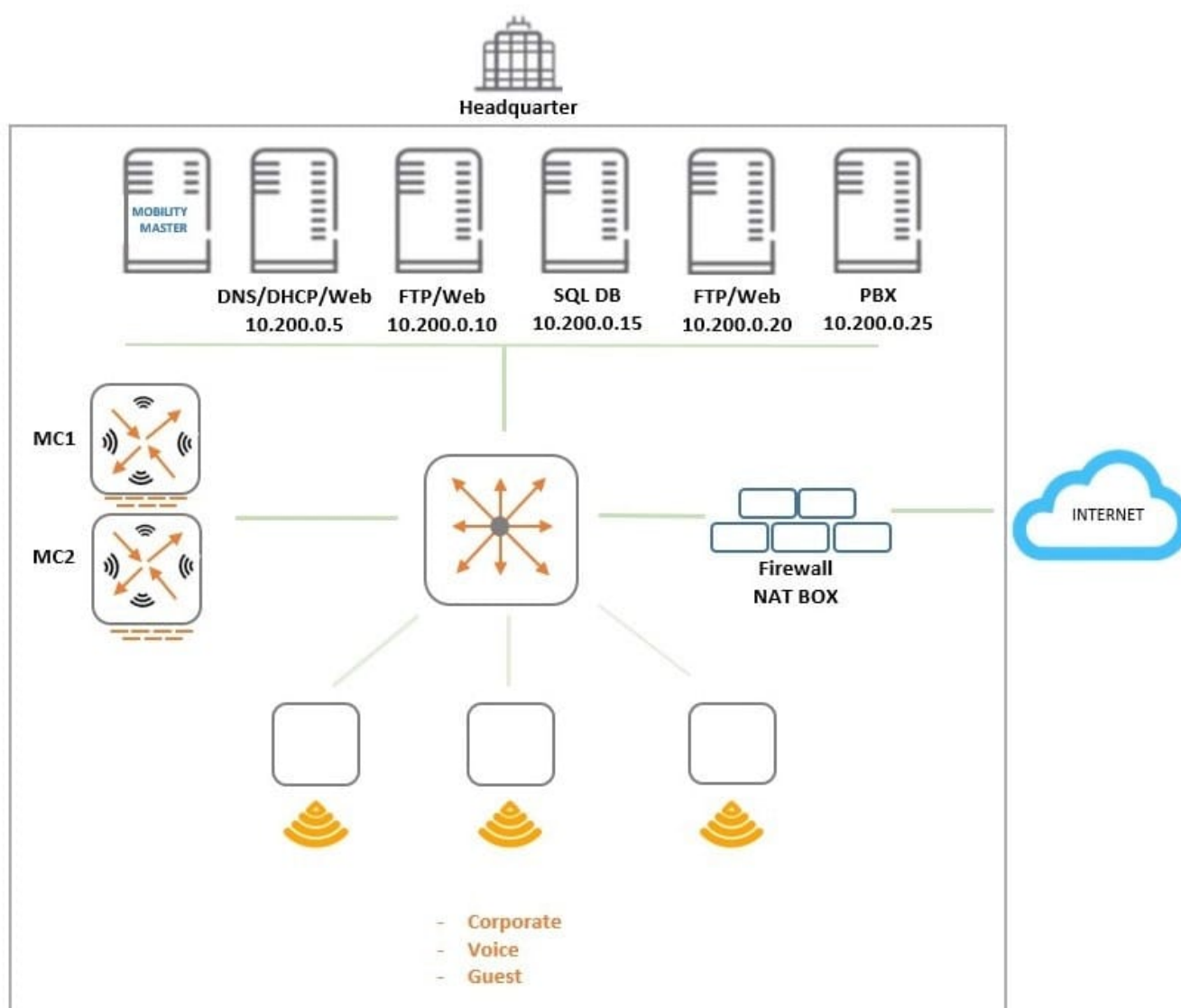
D. Configure the uplink of the BOC as an access port on the controller VLAN, and enable NAT for the SSID VLANs.

E. Configure the uplink of the BOC as a trunk port, tagging the controller and the SSOD VLANs, and enable NAT for the SSID VLANs.

Correct Answer: BE

#### QUESTION 4

Refer to the exhibit.



An organization provides WiFi access through a corporate SSID with an Aruba Mobility Master (MM) - Mobility Controller (MC) network that includes PEF functions. The organization wants to have a single firewall policy configured and applied

to the employee role.



This policy must allow users to reach Web, FTP, and DNS services, as shown in the exhibit. Other services should be exclusive to other roles. The client NICs should receive IP settings dynamically.

Which policy design meets the organization's requirements while minimizing the number of policy rules?



- ☐ A.
- ```
netdestination alias1
  host 10.200.0.5
  host 10.200.0.10
  host 10.200.0.20

netdestination alias2
  host 10.200.0.10
  host 10.200.0.20

ip access-list session policy1
  user host 10.200.0.5 svc-dns permit
  user alias alias1 svc-http permit
  user alias alias2 svc-ftp permit
```
- ☐ B.
- ```
netdestination alias1
  host 10.200.0.10
  host 10.200.0.20

ip access-list session policy1
  any any svc-dhcp permit
  user host 10.200.0.5 svc-dns permit
  user host 10.200.0.5 svc-http permit
  user alias alias1 svc-http permit
  user alias alias1 svc-ftp permit
```
- ☐ C.
- ```
netdestination alias1
  host 10.200.0.5
  host 10.200.0.10
  host 10.200.0.20

netdestination alias2
  host 10.200.0.10
  host 10.200.0.20

ip access-list session policy1
  any any svc-dhcp permit
  user host 10.200.0.5 svc-dns permit
  user alias alias1 svc-http permit
  user alias alias2 svc-ftp permit
```
- ☐ D.
- ```
netdestination alias1
  host 10.200.0.10
  host 10.200.0.20

ip access-list session policy1
  user host 10.200.0.5 svc-dns permit
  user host 10.200.0.5 svc-http permit
  user alias alias1 svc-http permit
  user alias alias1 svc-ftp permit
```



A. Option A

B. Option B

C. Option C

D. Option D

Correct Answer: C

---

#### QUESTION 5

Refer to the exhibits.



**Request Details**

SummaryInputOutput

Enforcement Profiles: {Wired-802.1X}

System Posture Status: UNKNOWN (100)

Audit Posture Status: UNKNOWN (100)

**RADIUS Response**

Radius:Aruba:Aruba-User-Role tunneled-employee

◀ Showing 8 of 1-20 records ▶

Change StatusShow ConfigurationExportShow LogsClose

```
Access-1# show ubt users all
```

```
Displaying All UBT Users for Zone: zone1
```

```
Downloaded user roles are preceded by *
```

| Port | Mac-Address | Tunnel | Status | Secondary-UserRole | Failure Reason |
|------|-------------|--------|--------|--------------------|----------------|
|------|-------------|--------|--------|--------------------|----------------|

```
Access-1#
```

```
Access-1# show ubt state
```

```
Local Master Server (LMS) State:
```

| LMS Type | IP Address | State |
|----------|------------|-------|
|----------|------------|-------|

|         |                |                     |
|---------|----------------|---------------------|
| Primary | : 10.1.224.100 | ready_for_bootstrap |
|---------|----------------|---------------------|

|           |                |                     |
|-----------|----------------|---------------------|
| Secondary | : 10.1.140.100 | ready_for_bootstrap |
|-----------|----------------|---------------------|

```
Switch Anchor Controller (SAC) State:
```

|  | IP Address | MAC Address | State |
|--|------------|-------------|-------|
|--|------------|-------------|-------|

|        |                |                   |            |
|--------|----------------|-------------------|------------|
| Active | : 10.1.224.100 | xx:xx:xx:xx:xx:xx | Registered |
|--------|----------------|-------------------|------------|

```
Access-1#
```

```
Access-1# show aaa authentication port-access int 1/1/20 client-status
```

```
Port Access Client Status Details
```

```
Client xx:xx:xx:xx:yy:yy, philip.swift
```

```
=====
```

```
Session Details
```

```
Port : 1/1/20
```

```
Session Time : 378s
```

```
Authentication Details
```

```
Status : dot1x Authenticated
```

```
Auth Precedence : dot1x - Authenticated, mac-auth - Not attempted
```

```
Authorization Details
```

```
Role :
```

```
Status : Invalid
```

```
Access-1# █
```





A network administrator deploys User Based Tunneling (UBT) in a corporate network to unify the security policies enforcement. When users authenticate with 802.1X, ClearPass shows Accept results, and sends the Aruba-User-Role attribute as expected. However, the AOS-CX based switch does not seem to build the tunnel to the Mobility Controller (MC) for this user.

Why does the switch fail to run UBT for the user?

- A. The switch has not fully associated to the MC.
- B. ClearPass is sending the wrong Vendor ID.
- C. The switch is not configured with the gateway-role.
- D. ClearPass is sending the wrong VSA type.
- E. The switch is not configured with the port-access role.

Correct Answer: B

[Latest HPE6-A79 Dumps](#)

[HPE6-A79 PDF Dumps](#)

[HPE6-A79 Exam Questions](#)