



HPE6-A75^{Q&As}

Aruba Certified Edge Professional Exam

Pass HP HPE6-A75 Exam with 100% Guarantee

Free Download Real Questions & Answers **PDF** and **VCE** file from:

<https://www.pass4itsure.com/hpe6-a75.html>

100% Passing Guarantee
100% Money Back Assurance

Following Questions and Answers are all new published by HP Official Exam Center

- ⚙️ **Instant Download** After Purchase
- ⚙️ **100% Money Back** Guarantee
- ⚙️ **365 Days** Free Update
- ⚙️ **800,000+** Satisfied Customers



**QUESTION 1**

OSPF is configured on an AOS-Switch, and the network administrator sets the router ID to 10.0.0.1. The administrator wants to be able to reach the switch at this ID from any location throughout the OSPF system. The administrator also needs the router ID to be stable and available, even if some links on the switch fail.

What should the administrator do?

- A. Make sure that 10.0.0.1 is the IP address on the VLAN with the lowest ID.
- B. Configure 10.0.0.1 on a loopback interface, and enable OSPF on that interface.
- C. Configure 10.0.0.1 as a manual OSPF neighbor on each switch in the OSPF system.
- D. Configure 10.0.0.1 as a secondary IP address on the switch 00BM poet.

Correct Answer: B

QUESTION 2

Refer to the exhibit.

```
Switch-1# show link-keepalive
```

```
Status and Configuration - UniDirectional Link Detection (UDLD)
```

```
Keepalive Retries    : 4
Keepalive Interval   : 5000 ms
Keepalive Mode       : forward-then-verify
```

Port	Enabled	Physical Status	Keepalive Status	Adjacent Switch	UDLD VLAN
A23	Yes	up	failure	00fd45-653ae9	untagged

Switch-1 and Switch-2 connect on interface A23. The switches experience a connectivity issue. The network administrator sees that both switches show this interface as up. The administrator sees the output shown in the exhibit on Switch-1.

What is a typical issue that could cause this output?

- A. a hardware issue, such as a broken cable
- B. asymmetric routing introduced by a routing configuration error
- C. an issue with queuing, caused by mismatched QoS settings
- D. mismatched IP addresses on the VLAN for the link

Correct Answer: A



QUESTION 3

Refer to the exhibit.

Exhibit 1

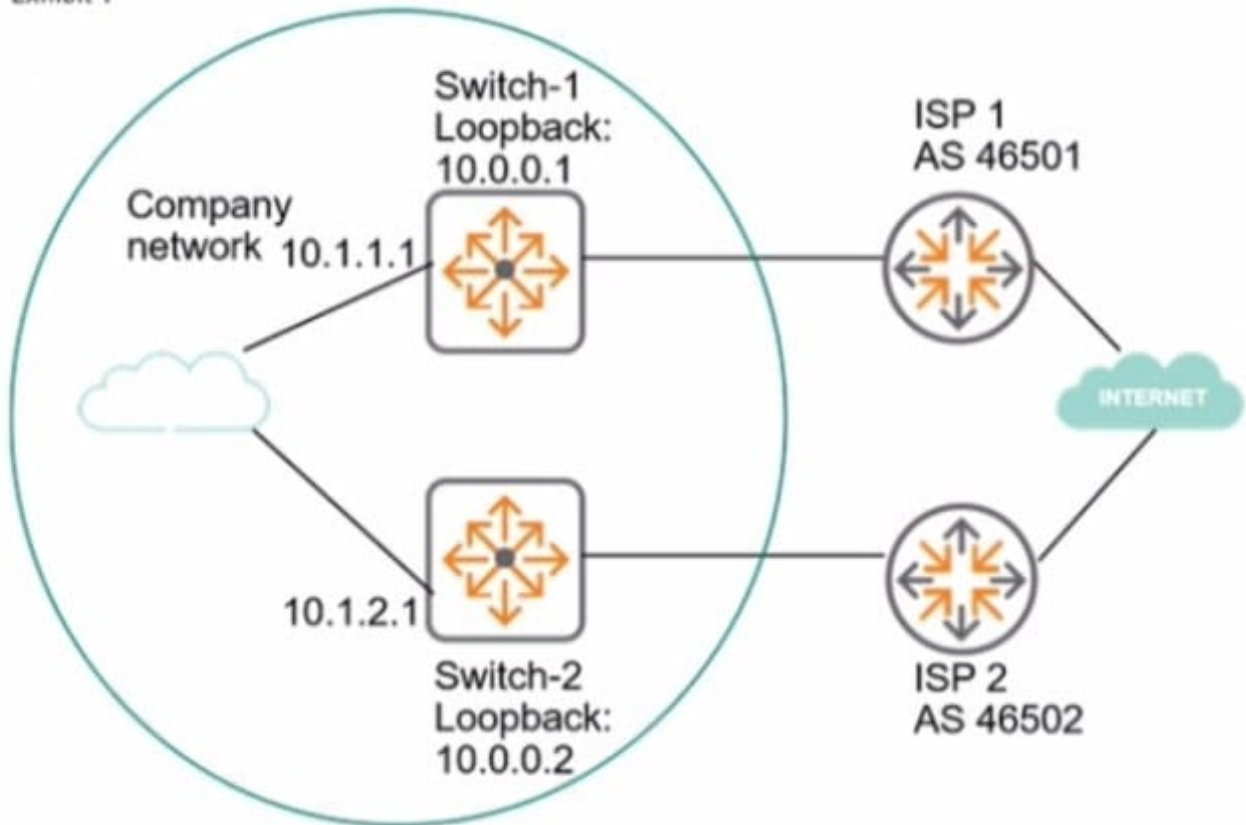




Exhibit 2

```
Switch-1# show ip bgp summary
```

Peer Information

Remote Address	Remote-AS	Local-AS	State	Admin Status
10.0.0.2	46500	46500	Connect	Start

```
Switch-1# show running-config router bgp
```

Running configuration:

```
router bgp 46500
  enable
  neighbor 10.0.0.2 remote-as 46500
exit
```

```
Switch-2# show ip bgp summary
```

Peer Information

Remote Address	Remote-AS	Local-AS	State	Admin Status
10.0.0.1	46500	46500	Connect	Start

```
Switch-2# show running-config router bgp
```

Running configuration:

```
router bgp 46500
  enable
  neighbor 10.0.0.1 remote-as 46500
exit
```

The network administrator needs to set up BGP between the two company switches. Switch-1 and Switch

2. The BGP connection does not establish. Based on the exhibits, what does the administrator need to do to fix the issue?

- A. Enable the multihop option for the neighbor on each of the switches.
- B. Enter the network command for 10.0.0.0/24 in the router BGP mode on each switch.
- C. Enable BGP on the interfaces that the switches use to reach each other.
- D. Set the update source for the neighbor to the local loopback interface on each switch.

Correct Answer: D

**QUESTION 4**

Refer to the exhibit.

```
Switch-1(config)# show running-config interface 1-20
Running configuration:

interface 1
  untagged vlan 20
  aaa port-access authenticator
  exit
#output the same for interfaces 2-20
```

Several interfaces on an AOS-Switch enforce 802.1X to a RADIUS server at 10.254.378.521. The interface

802.1X settings are shown in the exhibit, and 802.1X is also enabled globally. The security team have added a requirement for port security on the interfaces as well. Before administrators enable port security, which additional step must they complete to prevent issues?

- A. Set an 802.1X client limit on the interfaces.
- B. Manually add legitimate MAC addresses to the switch authorized MAC list.
- C. Enable eavesdropping protection on the interfaces.
- D. Enable DHCP snooping on VLAN 20.

Correct Answer: D

QUESTION 5

An administrator mistakenly configures the wrong VLAN setting on a managed controller's interface. This causes the controller to lose management access to the Mobility Master (MM).

Which mechanism will then attempt to restore the previous working configuration on the managed controller?

- A. disaster recovery
- B. auto-rollback
- C. restore config
- D. bulk configuration

Correct Answer: B