



HPE6-A72^{Q&As}

Aruba Certified Switching Associate Dumps

Pass HP HPE6-A72 Exam with 100% Guarantee

Free Download Real Questions & Answers **PDF** and **VCE** file from:

<https://www.pass4itsure.com/hpe6-a72.html>

100% Passing Guarantee
100% Money Back Assurance

Following Questions and Answers are all new published by HP Official Exam Center

- ⚙️ **Instant Download** After Purchase
- ⚙️ **100% Money Back** Guarantee
- ⚙️ **365 Days** Free Update
- ⚙️ **800,000+** Satisfied Customers





QUESTION 1

Which two options are considered the Layer 2 protocols? (Choose two.)

- A. 802.1Q
- B. IPSec
- C. STP
- D. RIP
- E. 802.11af

Correct Answer: AC

QUESTION 2

Which two port characteristics must match between LAG interfaces? (Choose two.)

- A. Port number
- B. Duplex
- C. Member ID
- D. Media type
- E. Chassis number

Correct Answer: BD

QUESTION 3

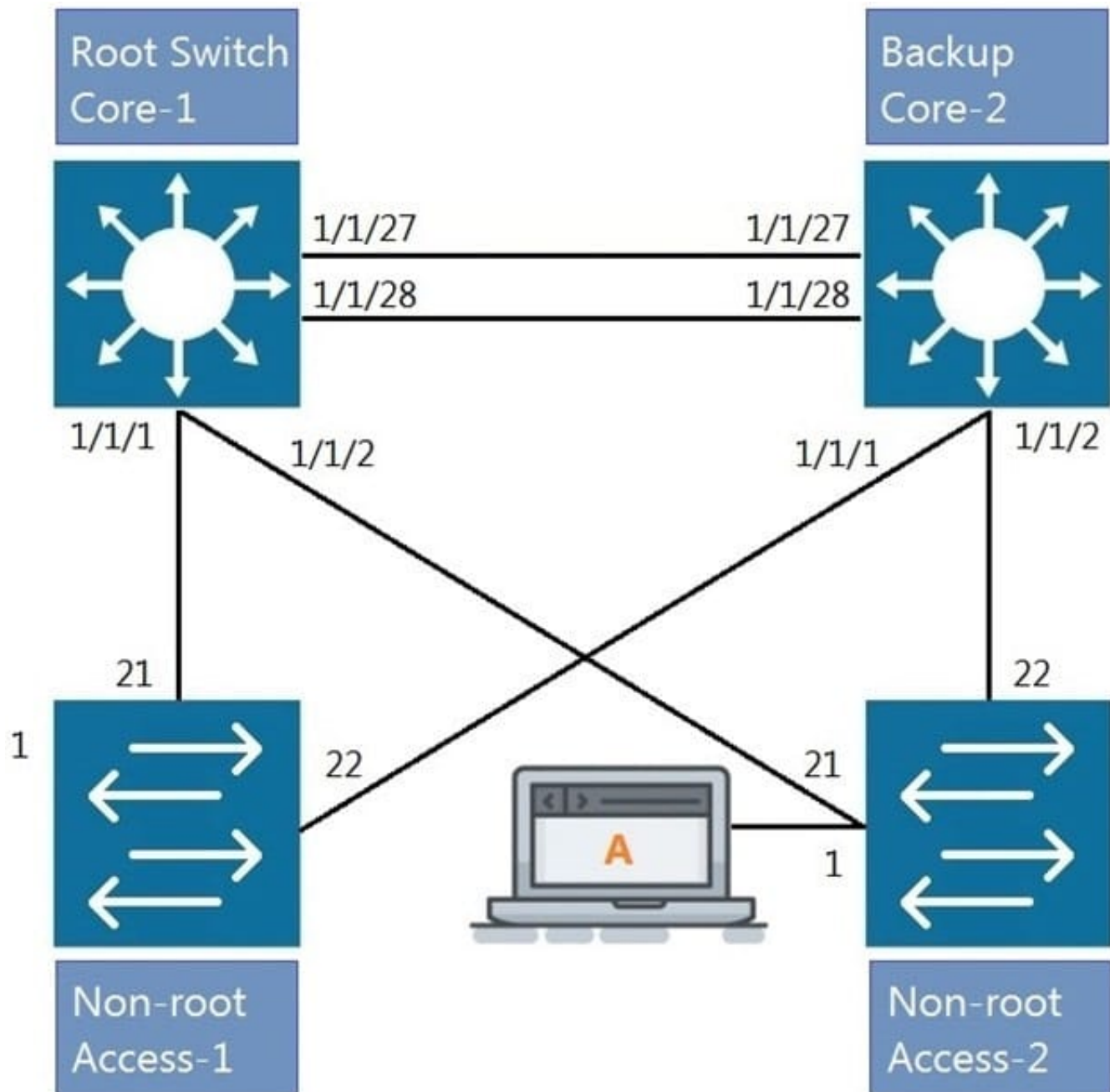
Which switches support Aruba Virtual Switching Extension (VSX)? (Choose two.)

- A. Aruba 6405
- B. Aruba 2930F
- C. Aruba 8400
- D. Aruba 5406R
- E. Aruba 8350

Correct Answer: AC

**QUESTION 4**

Refer to the exhibit.



All four switches in the diagram have been configured with the region name "Aruba1".

What two other MSTP configurations must match for switches within the same MST region? (Choose two.)

- A. MST region type
- B. MST Bridge ID



- C. MST version number
- D. MST revision number
- E. MST VLAN to instance mapping

Correct Answer: DE

QUESTION 5

Refer to the exhibit.

```
T11-Access-2# show lldp configuration
```

```
LLDP Global Configuration
```

```
=====
LLDP Enabled                : Yes
LLDP Transmit Interval      : 30
LLDP Hold Time Multiplier   : 4
LLDP Transmit Delay Interval : 2
LLDP Reinit Time Interval   : 2
```

```
TLVs Advertised
```

```
=====
```

```
Management Address
Port Description
Port VLAN-ID
System Capabilities
System Description
System Name
OUI
```

```
LLDP Port Configuration
```

```
=====
```

PORT	TX-ENABLED	RX-ENABLED
1/1/1	Yes	Yes
1/1/2	Yes	Yes
1/1/27	Yes	Yes
1/1/28	Yes	Yes

<--- output omitted --->

What configuration is needed in order for "show LLDP configuration" to show this output?

- A. none; LLDP is enabled by default on Aruba switches
- B. configuring LLDP both globally and on the interfaces



C. enabling LLDP on the interfaces only

D. configuring LLDP globally only

Correct Answer: A

[HPE6-A72 PDF Dumps](#)

[HPE6-A72 Practice Test](#)

[HPE6-A72 Exam Questions](#)