



# HPE6-A72<sup>Q&As</sup>

Aruba Certified Switching Associate Dumps

**Pass HP HPE6-A72 Exam with 100% Guarantee**

Free Download Real Questions & Answers **PDF** and **VCE** file from:

<https://www.pass4itsure.com/hpe6-a72.html>

100% Passing Guarantee  
100% Money Back Assurance

Following Questions and Answers are all new published by HP Official Exam Center

- ⚙️ **Instant Download** After Purchase
- ⚙️ **100% Money Back** Guarantee
- ⚙️ **365 Days** Free Update
- ⚙️ **800,000+** Satisfied Customers



**QUESTION 1**

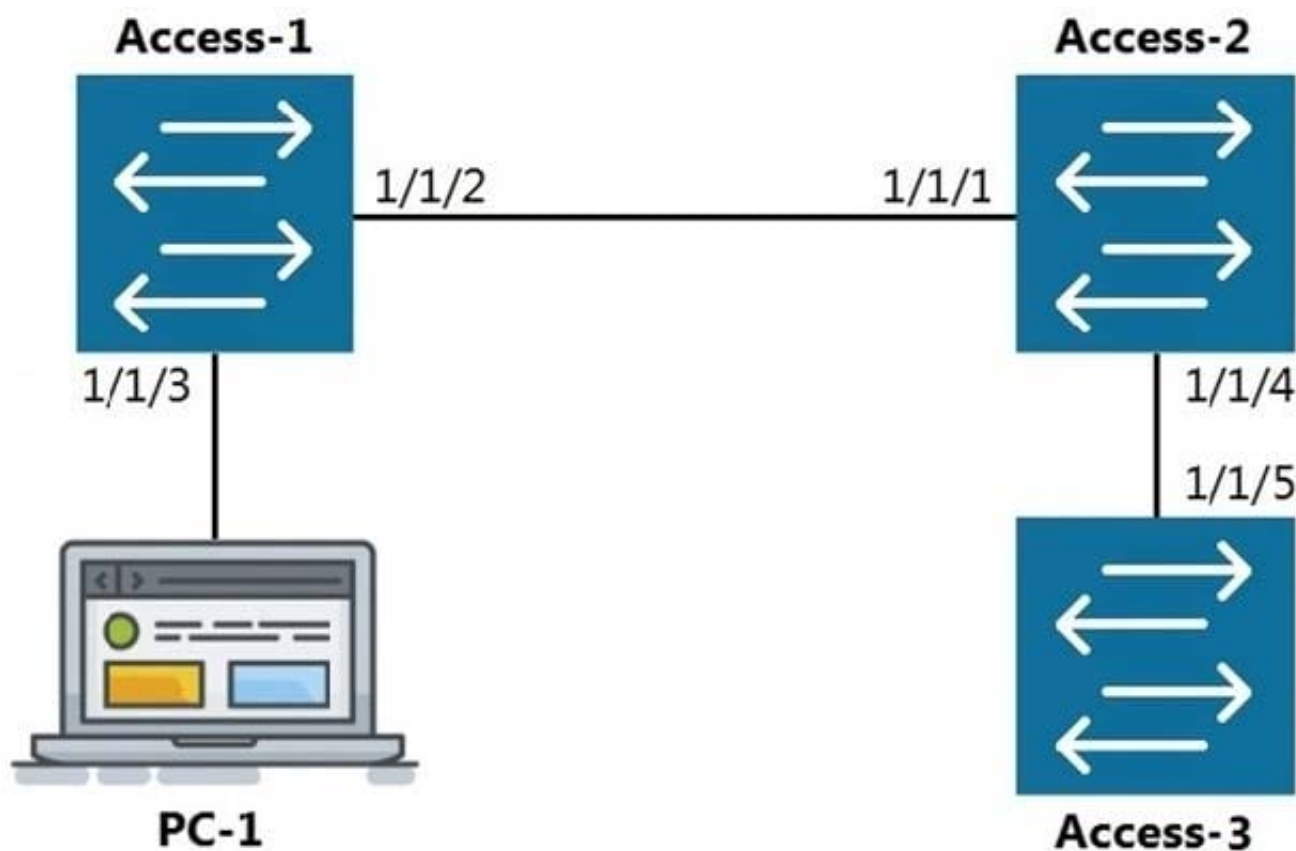
Which statement is true regarding modern switching requirements?

- A. Most older legacy switches had high port bandwidth utilization and were future proof designed to meet today's power-over-Ethernet needs.
- B. Requirements for PoE are normally addressed using AC to DC power adapters. Concerns for port security for IoT devices are usually addressed using default wired encryption that all 802.3 Ethernet switches provide.
- C. While APs are common, most clients are still docked and only require traditional wired connections with only the occasional dedicated PoE switch to provide power for the low number of devices needed.
- D. Clients tend to prefer wireless connections, raising the need for PoE port access. There is also a growing amount of IoT devices that require security and port authentication options.

Correct Answer: D

**QUESTION 2**

Refer to the exhibit.



LLDP

The command show LLDP neighbor-info gets typed into Access-1. All switches are Aruba OS-CX switches.



What is the output of this command?

- ☐ A.
- | LOCAL-PORT | CHASSIS-ID        | PORT-ID | PORT-DESC | TTL | SYS-NAME |
|------------|-------------------|---------|-----------|-----|----------|
| 1/1/1      | 90:20:c2:bc:ed:00 | 1/1/2   | 1/1/2     | 120 | Access-2 |
| 1/1/5      | 90:20:c2:bc:ef:00 | 1/1/2   | 1/1/2     | 120 | Access-3 |
- ☐ B.
- | LOCAL-PORT | CHASSIS-ID        | PORT-ID | PORT-DESC | TTL | SYS-NAME |
|------------|-------------------|---------|-----------|-----|----------|
| 1/1/1      | 90:20:c2:bc:ed:00 | 1/1/2   | 1/1/2     | 120 | Access-2 |
- ☐ C.
- | LOCAL-PORT | CHASSIS-ID        | PORT-ID | PORT-DESC | TTL | SYS-NAME |
|------------|-------------------|---------|-----------|-----|----------|
| 1/1/2      | 90:20:c2:bc:ed:00 | 1/1/1   | 1/1/1     | 120 | Access-2 |
| 1/1/2      | 90:20:c2:bc:ef:00 | 1/1/5   | 1/1/5     | 120 | Access-3 |
- ☐ D.
- | LOCAL-PORT | CHASSIS-ID        | PORT-ID | PORT-DESC | TTL | SYS-NAME |
|------------|-------------------|---------|-----------|-----|----------|
| 1/1/2      | 90:20:c2:bc:ed:00 | 1/1/1   | 1/1/1     | 120 | Access-2 |

A. Option A

B. Option B

C. Option C

D. Option D

Correct Answer: D

### QUESTION 3

Which statement is correct regarding powering an Aruba Access Point?

- A. PoE or PoE+ is only used with Ethernet that is carried over multi-mode fiber cabling.
- B. Using switchports for this reason is unnecessary, because Aruba Access Points typically use an AC to DC power adapter to draw power.
- C. PoE or PoE+ enabled switchports are rarely used given concerns about causing electrical interference, with the data also carried over Ethernet cabling.
- D. Most administrators use PoE or PoE+ enabled switchports to provide both Ethernet connectivity and power to the AP.



Correct Answer: D

---

#### QUESTION 4

Which two port characteristics must match between LAG interfaces? (Choose two.)

- A. Port number
- B. Duplex
- C. Member ID
- D. Media type
- E. Chassis number

Correct Answer: BD

---

#### QUESTION 5

Refer to the exhibit.

VLAN	Name	Mode	Mapping
1	DEFAULT_VLAN_1	native-untagged	port
10	Sales	trunk	port
20	Service	trunk	port
30	Customer	trunk	port

Which command produces the above output?

- A. show interface port 1/1/10 trunk
- B. show vlan port 1/1/10
- C. show trunk port 1/1/10 extended
- D. show interface port 1/1/10 switchport

Correct Answer: C

[HPE6-A72 VCE Dumps](#)

[HPE6-A72 Practice Test](#)

[HPE6-A72 Exam Questions](#)