



HPE6-A71^{Q&As}

Aruba Certified Mobility Professional Exam

Pass HP HPE6-A71 Exam with 100% Guarantee

Free Download Real Questions & Answers **PDF** and **VCE** file from:

<https://www.pass4itsure.com/hpe6-a71.html>

100% Passing Guarantee
100% Money Back Assurance

Following Questions and Answers are all new published by HP Official Exam Center

-  **Instant Download** After Purchase
-  **100% Money Back** Guarantee
-  **365 Days** Free Update
-  **800,000+** Satisfied Customers



**QUESTION 1**

An administrator configures AirGroup policies to define which Apple services are visible and available to wireless users in a campus WLAN. However, the policies are not being enforced.

Where must the administrator enable the AirGroup functionality on the Mobility Master (MM) so that the policies will be in effect?

- A. At the Mobility Master hierarchy
- B. At the controller level in the Managed Network hierarchy
- C. At the Access Points level in the Managed Network hierarchy
- D. At the global Managed Network hierarchy

Correct Answer: D

QUESTION 2

An administrator implements a ClearPass solution to authenticate Aruba wireless users. The Aruba wireless solution is an ArubaOS 8.x Mobility Master (MM) deployment. ClearPass sends an Aruba VSA role name for an authenticated user. However, the administrator notices that the role assigned to the user is different from the one assigned by the ClearPass server.

Which two items should the administrator verify that might be the cause of this problem? (Choose two.)

- A. Enablement of user roles on the controller
- B. Spelling of the role on the ClearPass server
- C. Server-derived role assignment on the ClearPass server
- D. Role existence on the Managed Network
- E. Order assignment that the controller uses to select a user role

Correct Answer: BD

QUESTION 3

Refer to the exhibits.

Exhibit 1: WLAN VAP configuration

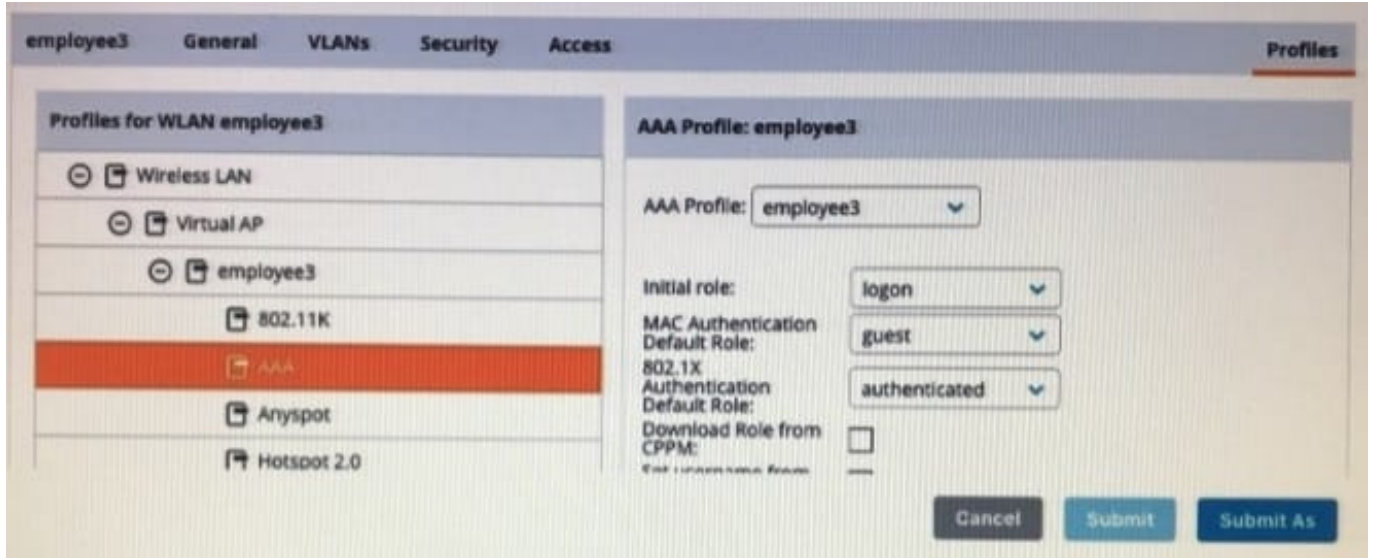


Exhibit 2: Microsoft NPS server configuration

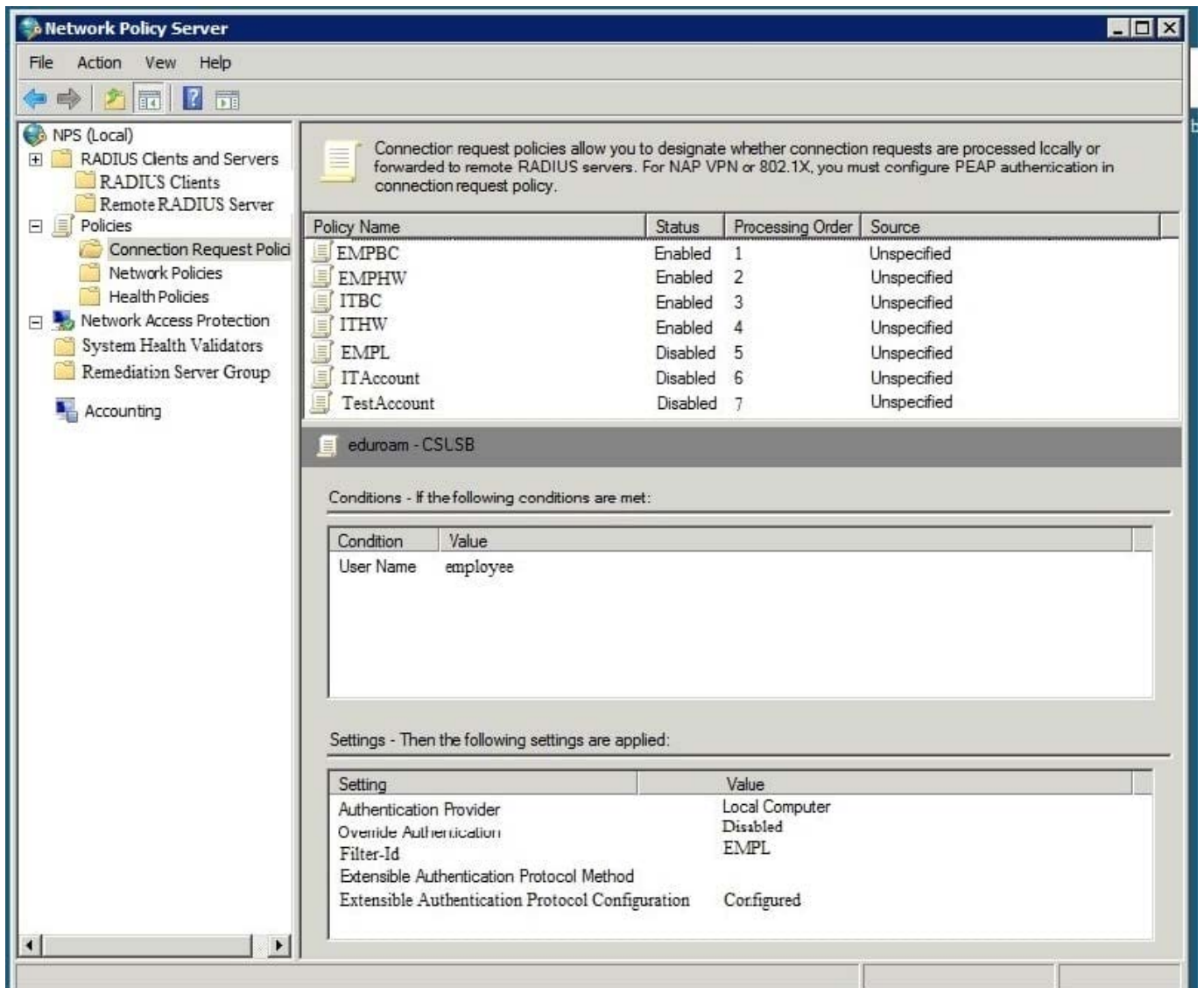




Exhibit 3: Server group configuration for the VAP.

Dashboard	<u>Auth Servers</u>	AAA Profiles	L2 Authentication	L3 Authentication	User Rules	Advanced
Configuration	Server Groups 4					
WLANs	NAME	SERVICES	FAIL THROUGH	LOAD BALANCE	SERVER RULES	
Roles&Policies	default	1	-	-	1	
Access Points	internal	1	-	-	1	
AP Groups	<u>Server-Group-Aruba</u>	<u>3</u>	-	-	<u>2</u>	
	employee	1	-	-	0	
Authentication	+					
Services	Server Group>Server-Group-Aruba-HPE		Servers	Options	<u>Server Rules</u>	
Interfaces						
Controllers	ATTRIBUTE	OPERATION	OPERAND	TYPE	ACTION	VALUE
System	Filter-Id	value-of	-	string	set role	-
Tasks	Filter-Id	equals	corporate	string	set role	employee

An employee authenticates with the username employee and the correct password. However, once the user authenticates, an administrator notices that the employee is assigned the authenticated role and not the desired employee role.

What should the administrator do to solve this problem?

- A. Add a new server group rule on the controller.
- B. Associate the user to the employee group in Microsoft NPS.
- C. Change the server group name on the controller.
- D. Reference the employee role in the WLAN VAP on the controller.

Correct Answer: A

We have to add new rule:

Filter-Id - equals - EMPL - string - set role - employee

QUESTION 4

An administrator wants to add a new folder in AirWave. Where would the administrator perform this action?

- A. in AMP Setup
- B. in AP/Devices
- C. in Groups
- D. in Device Setup



Correct Answer: B

QUESTION 5

An administrator creates a User Rule for role derivation on the Mobility Master (MM). Which client information can an administrator specify to identify that a particular user should be assigned a different role from the initial role?

- A. IP address
- B. VLAN
- C. MAC address
- D. Profiling information

Correct Answer: C

[HPE6-A71 PDF Dumps](#)

[HPE6-A71 VCE Dumps](#)

[HPE6-A71 Practice Test](#)