



HPE6-A49^{Q&As}

Aruba Certified Design Expert 8 Written Exam

Pass HP HPE6-A49 Exam with 100% Guarantee

Free Download Real Questions & Answers **PDF** and **VCE** file from:

<https://www.pass4itsure.com/hpe6-a49.html>

100% Passing Guarantee
100% Money Back Assurance

Following Questions and Answers are all new published by HP Official Exam Center

- ⚙️ **Instant Download** After Purchase
- ⚙️ **100% Money Back** Guarantee
- ⚙️ **365 Days** Free Update
- ⚙️ **800,000+** Satisfied Customers





QUESTION 1

A customer has multiple medium and large branch sites, each of which requires between 8 and 16 APs and supports between 200 and 600 wireless clients. Every branch site has an internet connection, which it uses to reach the central data center. The customer would prefer the WAN links to be optimized in the solution. Each side handles between 1 and 2 Gbps of traffic, most of which goes to the central data center. The data center has 7210 controllers for terminating the VPN connections.

Which branch office solution best meets the customer needs?

- A. CAPs and branch office controllers with an SD-WAN license
- B. IAPs and no branch office controllers
- C. CAPs and branch office controllers
- D. RAPs and no branch office controllers

Correct Answer: B

QUESTION 2

Refer to the exhibit.



Line#	Part Number	Description	Manufacturer	Unit Price	Quantity	Total	Price List
1.00	JW736A	Aruba 7205(US) 2-port 10GBASE-X (SFP+) Controller	Hewlett Packard Enter...	\$12,995.00	2	\$25,990.00	USA Price List (USD)
1.01	H3CW3E	Aruba 1Y FC NBD Exch 7205 Controller SVC [for JW736A]	Hewlett Packard Enter...	\$12,002.00	2	\$14,004.00	USA Price List (USD)
1.02	JW091A	SFP-10GB-SR 10GBASE-SR SFP+ 850nm Pluggable LC Conn.	Hewlett Packard Enter...	\$1,245.00	4	\$4,980.00	USA Price List (USD)
2.00	J323A	Aruba 2930 40GB Smart Rate PoE+ 1 slot Switch	Hewlett Packard Enter...	\$9,359.00	24	\$224,616.00	USA Price List (USD)
2.01	HT6U1E	HPE 3Y FC 4H Exch Aruba2930MSRPOE SVC [for J323A]	Hewlett Packard Enter...	\$2,911.00	24	\$69,864.00	USA Price List (USD)
2.02	JL086A	Aruba X372 54VDC 680W Power Supply	Hewlett Packard Enter...	\$639.00	24	\$15,336.00	USA Price List (USD)
2.03	JL086A ABA	INCLUDED: Power Cord – U.S. localization	Hewlett Packard Enter...	Incl.	24		USA Price List (USD)
2.04	JL325A	Aruba 2930 2-port Stacking Module	Hewlett Packard Enter...	\$1,019.00	24	\$24,456.00	USA Price List (USD)
2.05	JL083A	Aruba 3810M/2930M 4SFP+ MACsec Module	Hewlett Packard Enter...	\$1,259.00	16	\$20,144.00	USA Price List (USD)
2.06	J9150D	Aruba 10G SFP+ LC SR 300m MMF Transceiver	Hewlett Packard Enter...	\$1,040.00	16	\$16,640.00	USA Price List (USD)
3.00	J9821A	Aruba 5406R zl2 Switch	Hewlett Packard Enter...	\$2,419.00	2	\$4,838.00	USA Price List (USD)
3.01	H1MT0E	HPE 3Y FC 24x7 Aruba 5406R zl2 Switch SVC [for J9821A]	Hewlett Packard Enter...	\$4,094.00	2	\$8,188.00	USA Price List (USD)
3.02	U4832E	HPE Networks 54xx/82xx zl Startup SVC [for J9821A]	Hewlett Packard Enter...	\$2,325.00	2	\$4,650.00	USA Price List (USD)
3.03	J9828A	Aruba 5400R 700W PoE+ zl2 PSU	Hewlett Packard Enter...	\$799.00	2	\$1,598.00	USA Price List (USD)
3.04	J9828A ABA	INCLUDED: Power Cord – U.S. localization	Hewlett Packard Enter...	Incl.	2		USA Price List (USD)
3.05	J9993A	Aruba 8p 1G/10GbE SFP+ v3 zl2 Mod	Hewlett Packard Enter...	\$14,799.00	4	\$19,196.00	USA Price List (USD)
3.06	J9150O	Aruba 10G SFP+ LC SR 300m MMF Transceiver	Hewlett Packard Enter...	\$1,040.00	20	\$20,800.00	USA Price List (USD)
3.07	J4858D	Aruba 1G SFP LC SX 500m MMF Transceiver	Hewlett Packard Enter...	\$325.00	4	\$1,300.00	USA Price List (USD)



3.08	J9996A	Aruba 2p 40GbE QSFP+ v3 zl2 Mod	Hewlett Packard Enter...	\$6,799.00	4	\$27,196.00	USA Price List (USD)
3.09	JL308A	Aruba 40G QSFP+ LC BiD 150m MMF 2-strand Transceiver	Hewlett Packard Enter...	\$1,095.00	2	\$2,190.00	USA Price List (USD)
4.00	JH234A	HPE X242 40G QSFP+ to QSFP+ 1m DAC Cable	Hewlett Packard Enter...	\$419.00	2	\$838.00	USA Price List (USD)
5.00	JZ033A	Aruba AP-345 (US) Unified AP	Hewlett Packard Enter...	\$1,395.00	192	\$267,840.00	USA Price List (USD)
5.01	H9RQ5E	Aruba 1Y FC NBD Exch AP-345 SVC [for JZ033A]	Hewlett Packard Enter...	\$61.00	192	\$11,712.00	USA Price List (USD)
6.00	JY791A	Aruba MM-HW-1K Mobility Master 1000 AP HW Appliance	Hewlett Packard Enter...	\$17,995.00	2	\$35,990.00	USA Price List (USD)
6.01	H6QE5E	Aruba 1Y FC NBD Exch MM-HW-1K Mob1000SVC [for JY7]	Hewlett Packard Enter...	\$2,770.00	2	\$5,540.00	USA Price List (USD)
6.02	JW124A	PC-AC-NA North America AC Power Cord	Hewlett Packard Enter...	\$5.00	4	\$20.00	USA Price List (USD)
6.03	JW471AAE	Aruba LIC-ENT Enterprise (LIC-AP LIC-PEF LIC-RFP and LIC-...)	Hewlett Packard Enter...	\$300.00	192	\$57,600.00	USA Price List (USD)
6.04	H2XW3E	Aruba 1Y FC 24x7 License On Bundle SVC [for JW471AAE]	Hewlett Packard Enter...	\$46.00	192	\$8,832.00	USA Price List (USD)
6.05	JW088A	SFP-SX 1000BASE-SX SFP 850nm LC Connector Pluggable...	Hewlett Packard Enter...	\$395.00	4	\$1,580.00	USA Price List (USD)
7.00	J9734A	Aruba 2920/2930M 0.5m Stacking Cable	Hewlett Packard Enter...	\$149.00	15	\$2,235.00	USA Price List (USD)
Quote Total						\$888,173	

The network architect has created the BOM shown in the exhibit for a complete new wired and wireless solution for a customer. This solution will support 6000 wireless clients and 900 wired clients. The customer wants to discover and manage every component of the network in AirWave, including MMs, MCs, APs, and switches.

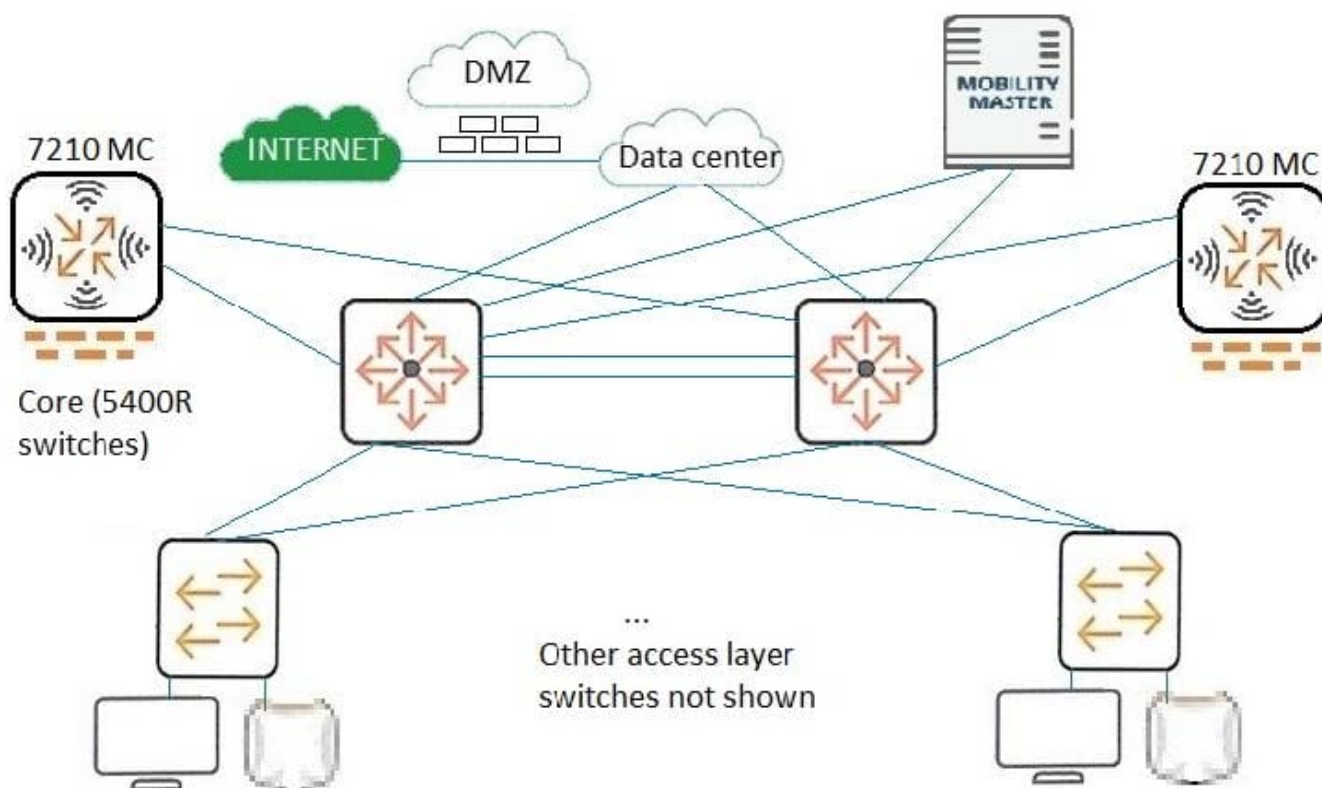
How many AirWave licenses does the architect need to add?

- A. 30
- B. 222
- C. 6930
- D. 7122

Correct Answer: A

**QUESTION 3**

Refer to the exhibit.



A customer needs a network upgrade. The customer has these availability requirements for wireless access:

One MC and one core switch can fail with immediate, stateful failover for client connections.

Network upgrades can occur without the requirement of a maintenance window.

The exhibit shows the architecture plan.

Which technologies should the architect recommend?

- A. Clustering on MCs and VRRP on Core switches
- B. VRRP on MCs and VSF on Core switches
- C. VRRP on both MCs and Core switches
- D. Clustering on MCs and VSF on Core switches

Correct Answer: A

QUESTION 4



Case study

A customer needs a wireless network upgrade for 802.11ac and possibly an upgrade to the wired network.

The customer requires dual-radio 802.11ac APs, each radio of which can support 4x4 MIMO at full feature set.

The customer has given architects this information about their wireless devices:

2700 IoT devices which will have only wireless connections; they support WPA2 with 802.1X

300 on each floor in 3 buildings with 3 floors each

5,400 users, who use devices such as laptops and smartphones

600 users on each floor in 3 buildings with 3 floors each

24 security cameras which will have only wireless connections; they support WPA2 with 802.1X and have a local power source

4 on floor 1 of each of the 3 buildings

2 on the other 6 floors

The architect also has collected information about the existing wired network.

The existing access layer switches support these features:

10/100/1000 edge ports

PoE (802.3af)

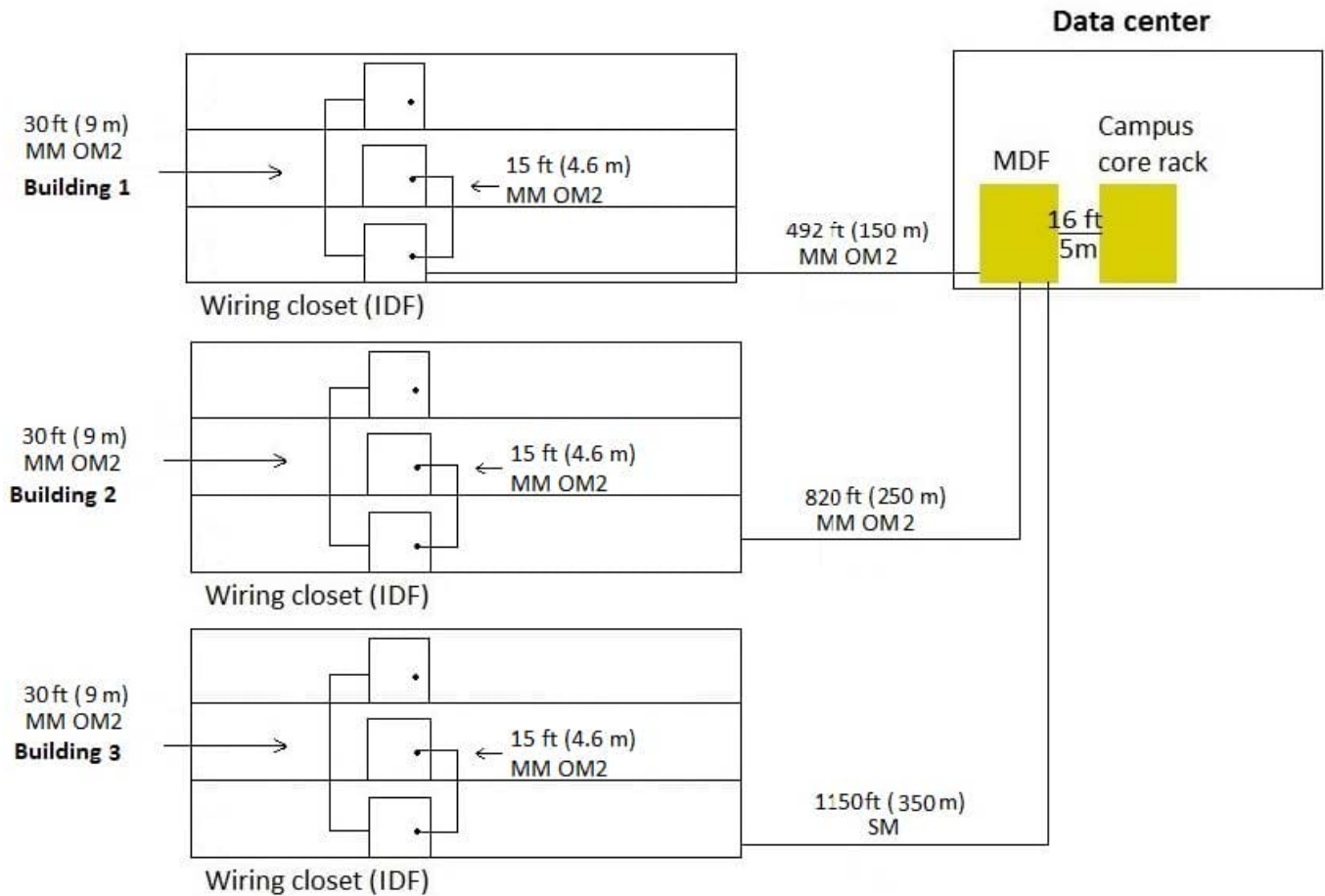
1GbE fiber uplinks

The existing aggregation switches support these features:

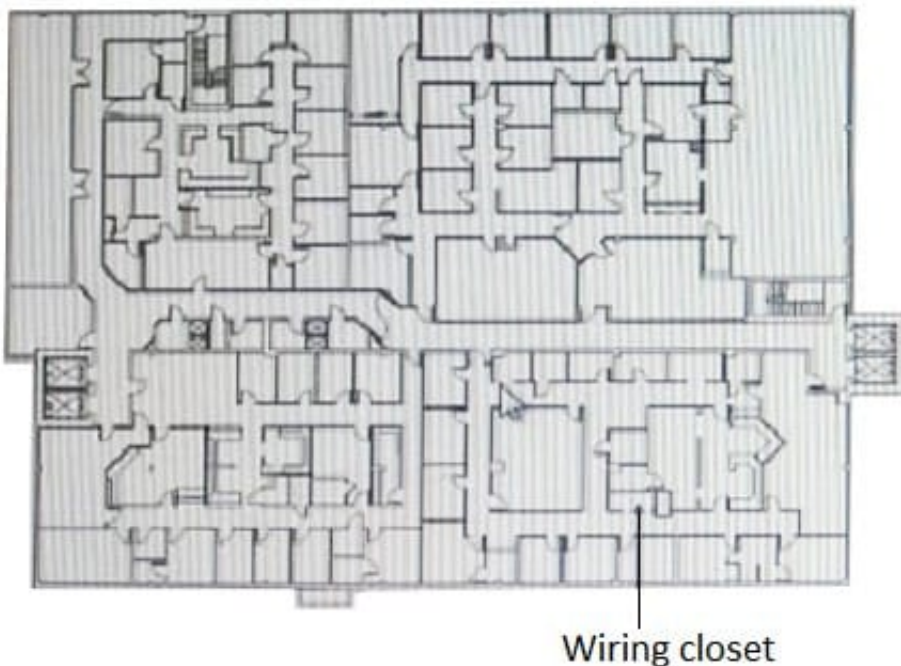
1/10GbE fiber ports

ARP tables up to 62,000

The customer has provided this figure that shows the existing cabling between floors and between buildings:



Each floor is about 100 feet (30 m) by 140 feet (43 m) with a 10 foot (3 m) ceiling. Interior walls are drywall. The layout for each floor is similar to that shown below. CAT5e cable is extended to all areas.



What is one piece of additional information architects should obtain from the customer before they design the wireless



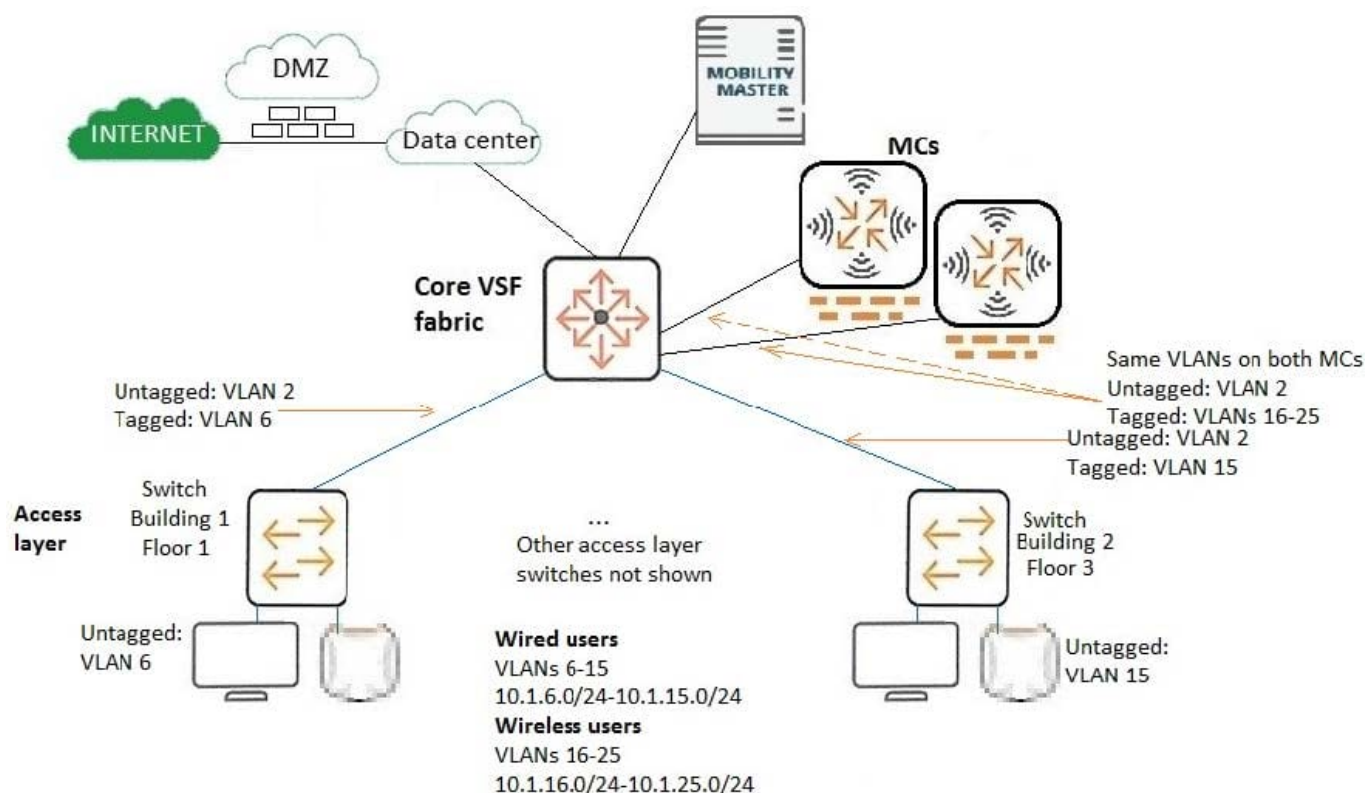
solution?

- A. whether the users sometimes connect their laptops with Ethernet
- B. whether the IoT devices support MAC-Auth
- C. the number of concurrently used wireless devices per user
- D. the power requirements for the security cameras

Correct Answer: C

QUESTION 5

Refer to the exhibit.



A customer needs a wireless network upgrade and has these requirements: Support any applications used on a wired connection Support up to 2500 wireless clients Support seamless roaming from floor to floor and building to building Continue to function seamlessly if one AP or controller fails

The architect has designed the local infrastructure for the network as shown in the exhibit.

Which change should the architect make to better meet customer requirements and best practices?

- A. Combine the /24 subnets for wireless and wired users into a /16 subnet.
- B. Place each controller in a different VLAN and subnet.
- C. Change the /24 subnets for wireless users into a /25 subnet.



D. Combine the /24 subnets for wireless users into a /20 subnet.

Correct Answer: B

[HPE6-A49 PDF Dumps](#)

[HPE6-A49 Practice Test](#)

[HPE6-A49 Braindumps](#)