



HPE6-A49^{Q&As}

Aruba Certified Design Expert 8 Written Exam

Pass HP HPE6-A49 Exam with 100% Guarantee

Free Download Real Questions & Answers **PDF** and **VCE** file from:

<https://www.pass4itsure.com/hpe6-a49.html>

100% Passing Guarantee
100% Money Back Assurance

Following Questions and Answers are all new published by HP Official Exam Center

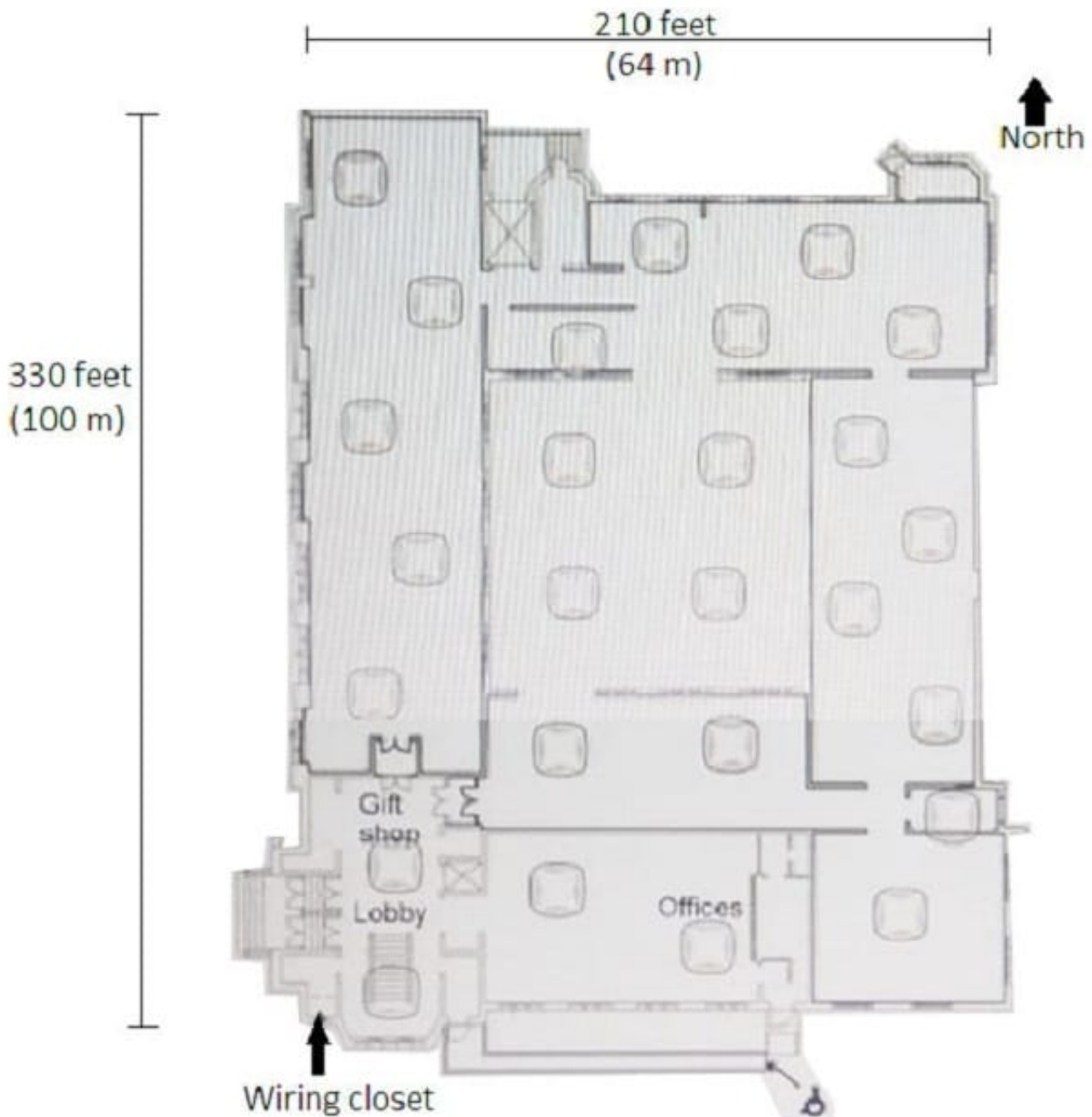
-  **Instant Download** After Purchase
-  **100% Money Back** Guarantee
-  **365 Days** Free Update
-  **800,000+** Satisfied Customers





QUESTION 1

Refer to the exhibit.



A museum wants to add full 802.11ac wireless coverage across the building, which is about 210 feet (64 m) by 330 feet (100m). The museum has 15-foot (4,6 m) ceilings and stone interior walls. The network needs to support up to 600 wireless guest devices. The exhibit also shows a preliminary plan for AP locations. The museum has eight Ethernet drops in the lobby and gift shop, but has otherwise not been wired.

What is one recommendation that the architect should make to ensure a successful deployment?



- A. use of directional antennas to avoid lost signal
- B. addition of a writing closet closer to the north side
- C. use of at least CAT5 cable to connect to the APs
- D. addition of about 10 APs to achieve adequate density

Correct Answer: C

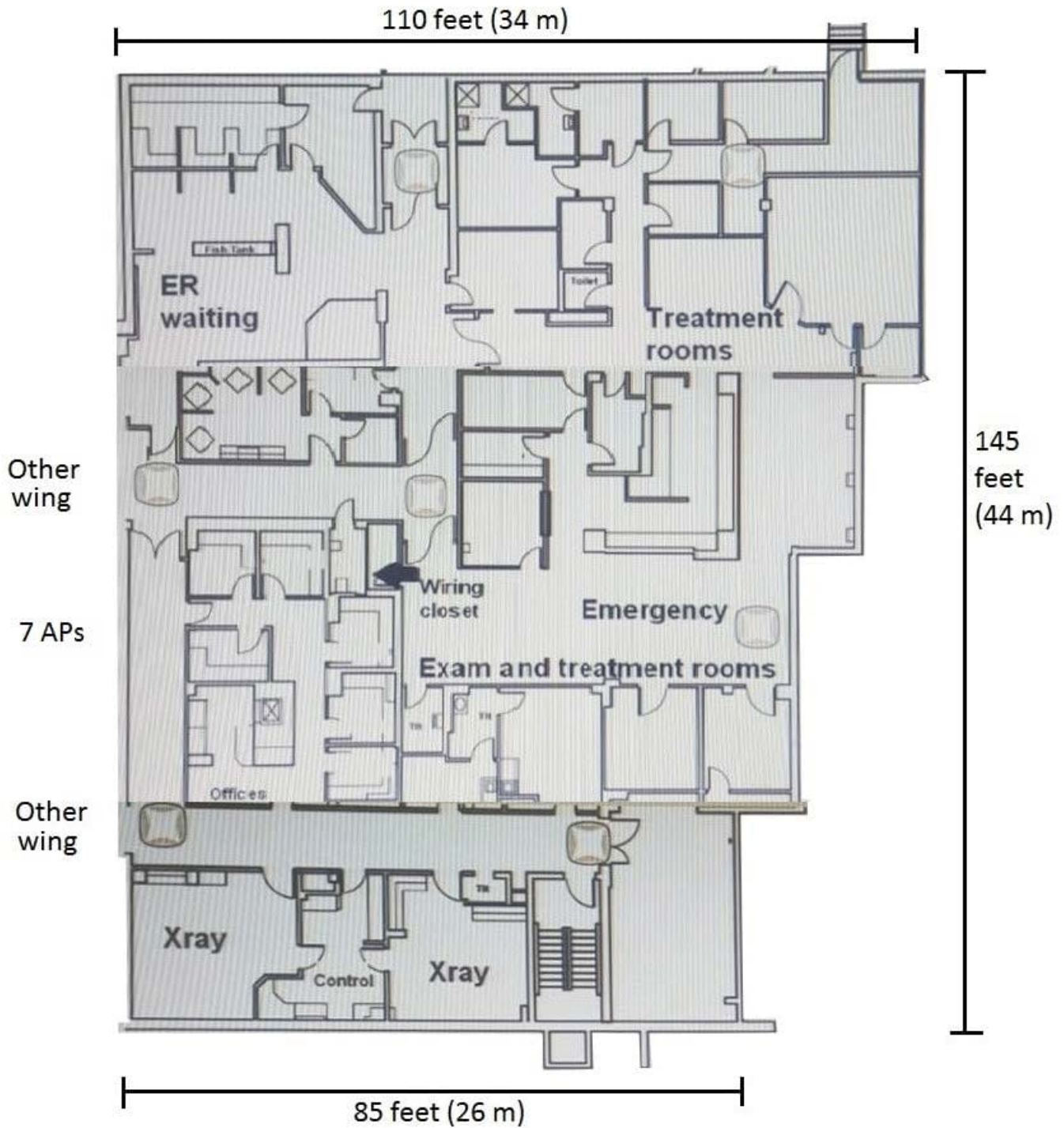
QUESTION 2

A hospital needs an upgrade to 802.11ac for its wireless network, which needs to provide complete coverage. The hospital has a concrete exterior and uses drywalls for all of the interior walls with a few exceptions as mandated for safety. The building has 10 foot (3m) ceilings. The legacy APs were deployed in the hallway, but the customer is open to deploying APs in any room such as reception areas, patient rooms, operating rooms, treatment rooms, and lounges. The wireless network must support wireless medical devices, voice communicators for medical staff, laptops in nurse stations, medical staff tablets, and visitor and patient personal devices. All of these devices support both the 2.4GHz and 5GHz band. The exhibits below show one wing of one floor of the hospital. This wing is about 14,000 square feet (1300 sq. m). This area has up to: 40 concurrent patients and visitors, who might have up to two devices 40 concurrent staff members, who might have up to three devices About 100 medical and other types of wireless devices

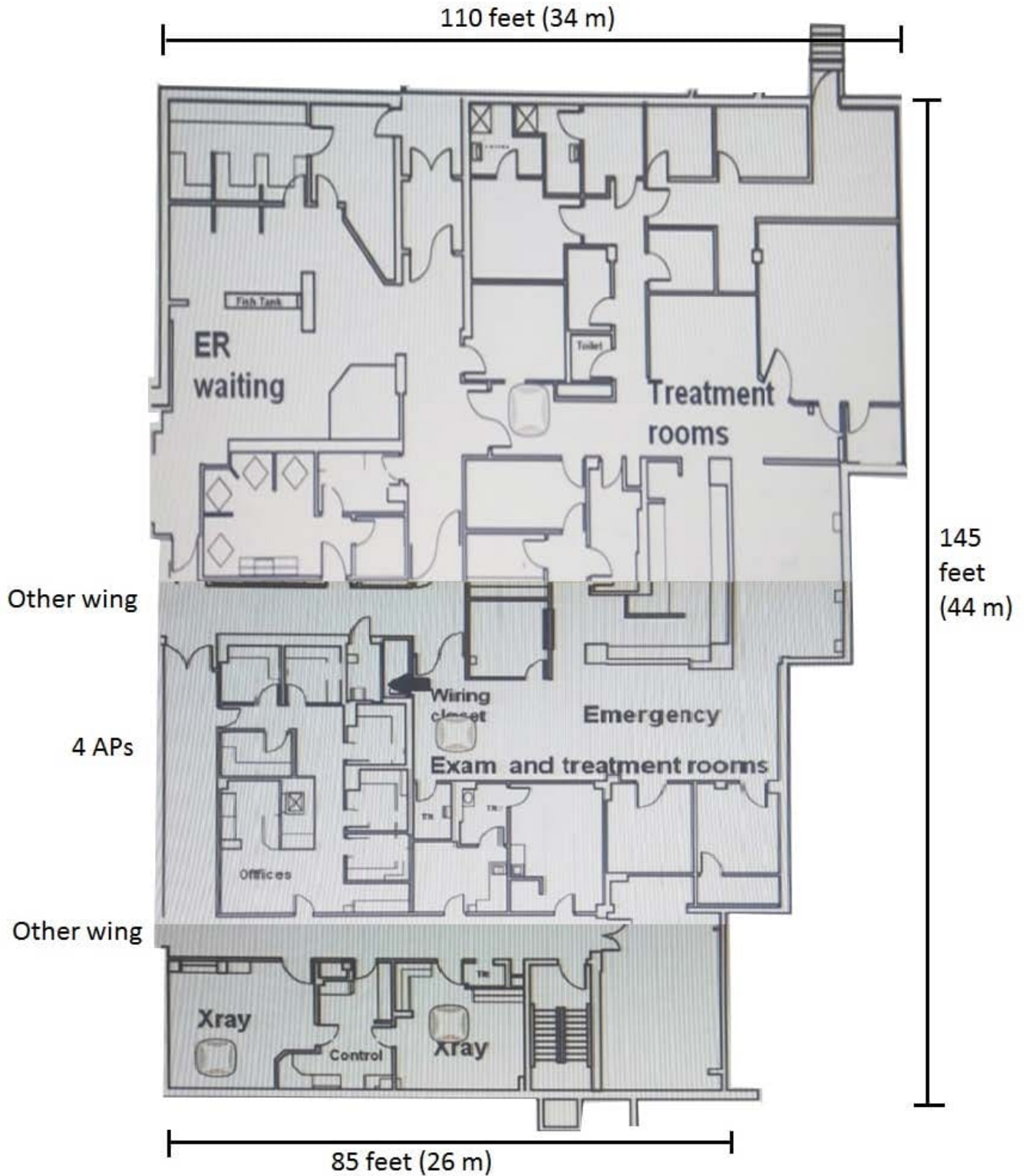
Several of these wireless medical devices are in the X-ray and X-ray control rooms. The architect has already planned to place APs in stairwells on another floor.

Which AP plan for this wing of this floor meets the customer needs?

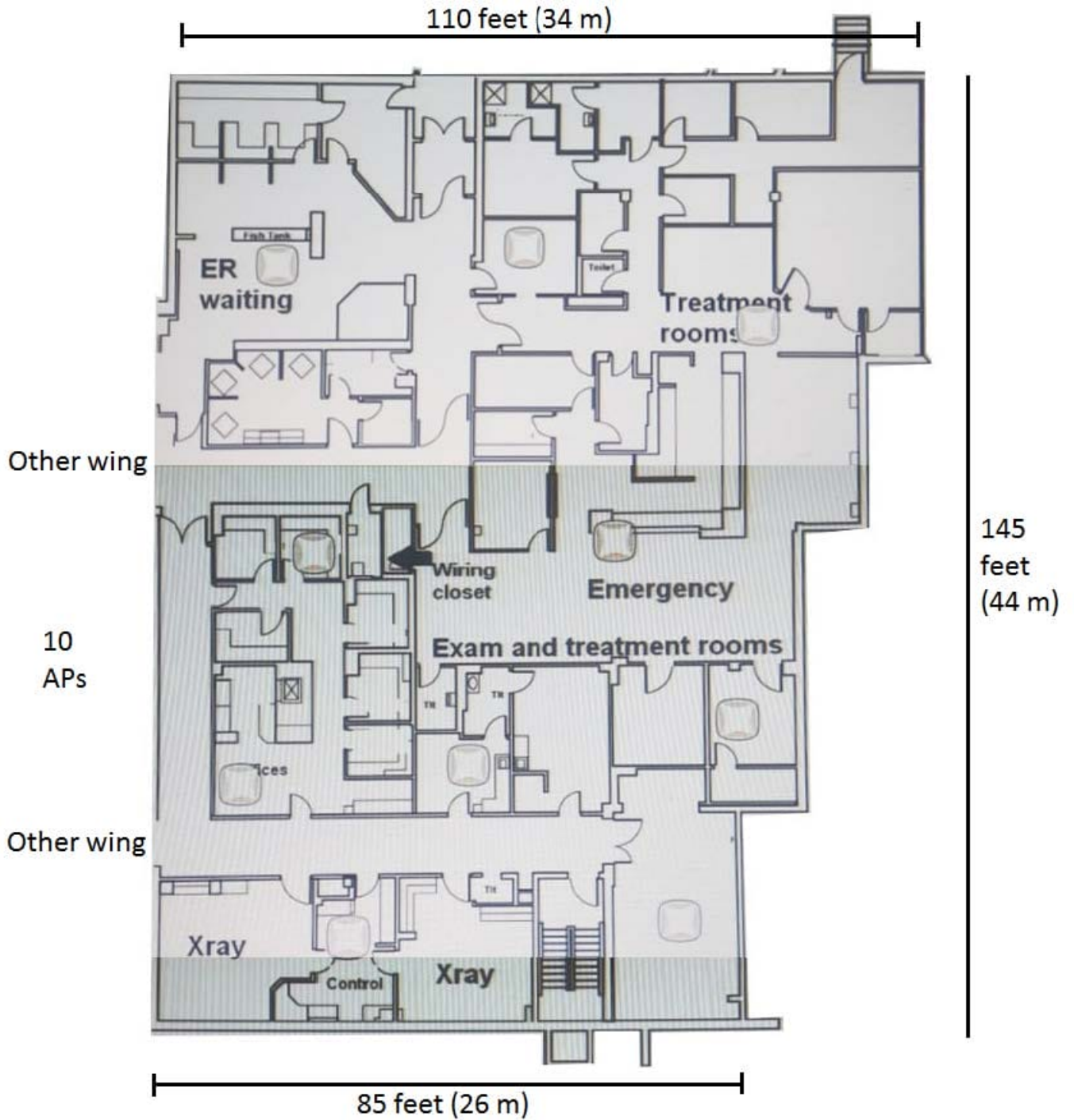
A.



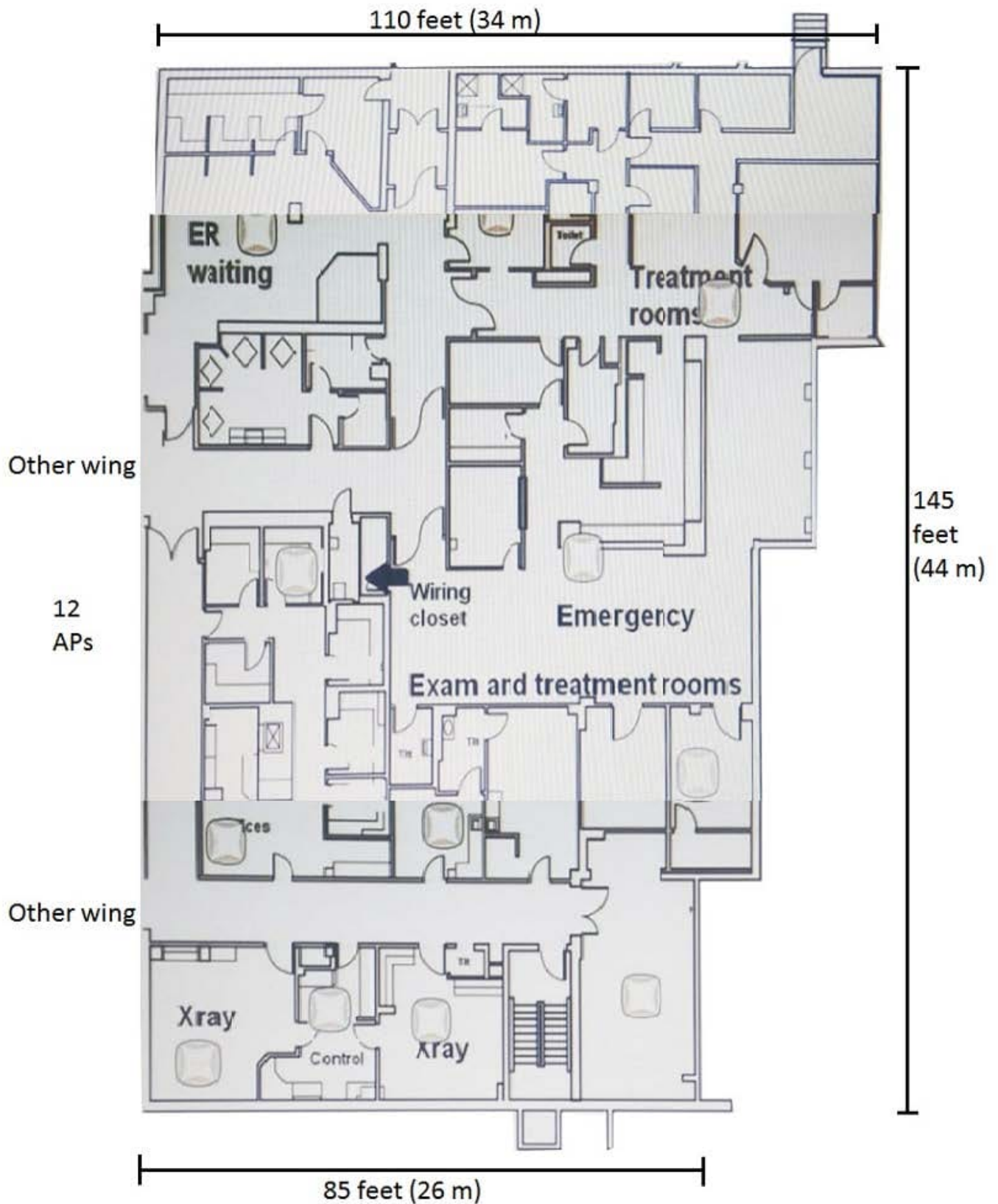
B.



C.



D.



Correct Answer: D



QUESTION 3

A hospital needs a wireless solution which will provide guest access for patients and visitors, as well as for medical staff. In addition to laptops and tablets, staff have wireless voice communicator devices. Some medical equipment also connects wirelessly.

How can the network architect help to ensure that patient and visitor internet use does not interfere with more vital hospital applications?

- A. Deploy IntroSpect to monitor patient and visitor traffic.
- B. Plan a bandwidth contract for the guest role in the MC firewall.
- C. Deploy dedicated Air Monitors (AMs) at about one-fourth the density of APs.
- D. Ensure that the guest SSID has a password associated with it.

Correct Answer: C

QUESTION 4

Refer to the exhibit.

Quotation - Composite View

Line#	Part Number	Description	Manufacturer	Unit Price	Quantity	Total	Price List
1.00	JY322A	Aruba 2930 48G PoE+ 1 slot Switch	Hewlett Packard Enter...	\$6,339.00	3	\$19,017.00	USA Price List (USD)
1.01	H2CA6E	HPE 3Y FC 4H Exch A 2930M 48G P SwT SVC [for JL322A]	Hewlett Packard Enter...	\$1,939.00	3	\$5,817.00	USA Price List (USD)
1.02	JL086A	Aruba X372 54VDC 680W Power Supply	Hewlett Packard Enter...	\$539.00	3	\$1,917.00	USA Price List (USD)
1.03	JL086A ABA	INCLUDED: Power Card - U.S. localization	Hewlett Packard Enter...	Incl.	3		
1.04	JL325A	Aruba 2930 2-port Stacking Module	Hewlett Packard Enter...	\$1,019.00	3	\$3,057.00	USA Price List (USD)
1.05	JL083A	Aruba 3810M/2930M 4SFP+ MACsec Module	Hewlett Packard Enter...	\$1,259.00	2	\$2,518.00	USA Price List (USD)
1.06	J9150D	Aruba 10G SFP+ LC SR 300m MMF Transceiver	Hewlett Packard Enter...	\$1,040.00	2	\$2,080.00	USA Price List (USD)
2.00	J9734A	Aruba 2920/2930M 0.5m Stacking Cable	Hewlett Packard Enter...	\$149.00	3	\$447.00	USA Price List (USD)
Quote Total						\$34,853.00	

A writing closet needs to support these devices: 100 desktops 5 printers 20 AP-345s

The customer wants to single-home the AP-345s and support higher than 1GbE speeds on the AP connections to future proof. The customer also requires that the closet have two 10GbE links to the core with SR transceivers. The exhibit shows the preliminary plan for this closet.

Which correction should the architect make to the plan to meet the customer requirements?

- A. Change all of the switches to the Aruba 2930M 40G 8 HPE Smart Rate PoE+ 1-Slot Switch.
- B. Change one switch to the 2930M 24-port Smart Rate PoE+ model.



C. Add a 4-port SFP+ module to one of the switches.

D. Add a Smart Rate module to each of the switches.

Correct Answer: C

QUESTION 5

A university has a dormitory with several floors. Currently APs are deployed in the hallways about every 50 feet (15m). The university has several issues with the existing network:

Students complain that the network is very slow, and the wireless signal is poor.

Students want to connect some equipment such as gaming consoles and IP TVs on Ethernet, but the dorm rooms just have one Ethernet port.

How does the deployment of AP303Hs resolve the customer issues?

A. They are specialized to provide wireless coverage for single-room deployment and also provide wired ports for clients.

B. They are specialized for wireless meshing, which conserves Ethernet ports, and for high-speed wireless services.

C. They have high-gain antennas designed for older buildings and support Smart Rate for high bandwidth on one port.

D. They have directional antennas that will improve the wireless signal and require just one Ethernet port.

Correct Answer: C

[HPE6-A49 PDF Dumps](#)

[HPE6-A49 Practice Test](#)

[HPE6-A49 Study Guide](#)