



HPE6-A49^{Q&As}

Aruba Certified Design Expert 8 Written Exam

Pass HP HPE6-A49 Exam with 100% Guarantee

Free Download Real Questions & Answers **PDF** and **VCE** file from:

<https://www.pass4itsure.com/hpe6-a49.html>

100% Passing Guarantee
100% Money Back Assurance

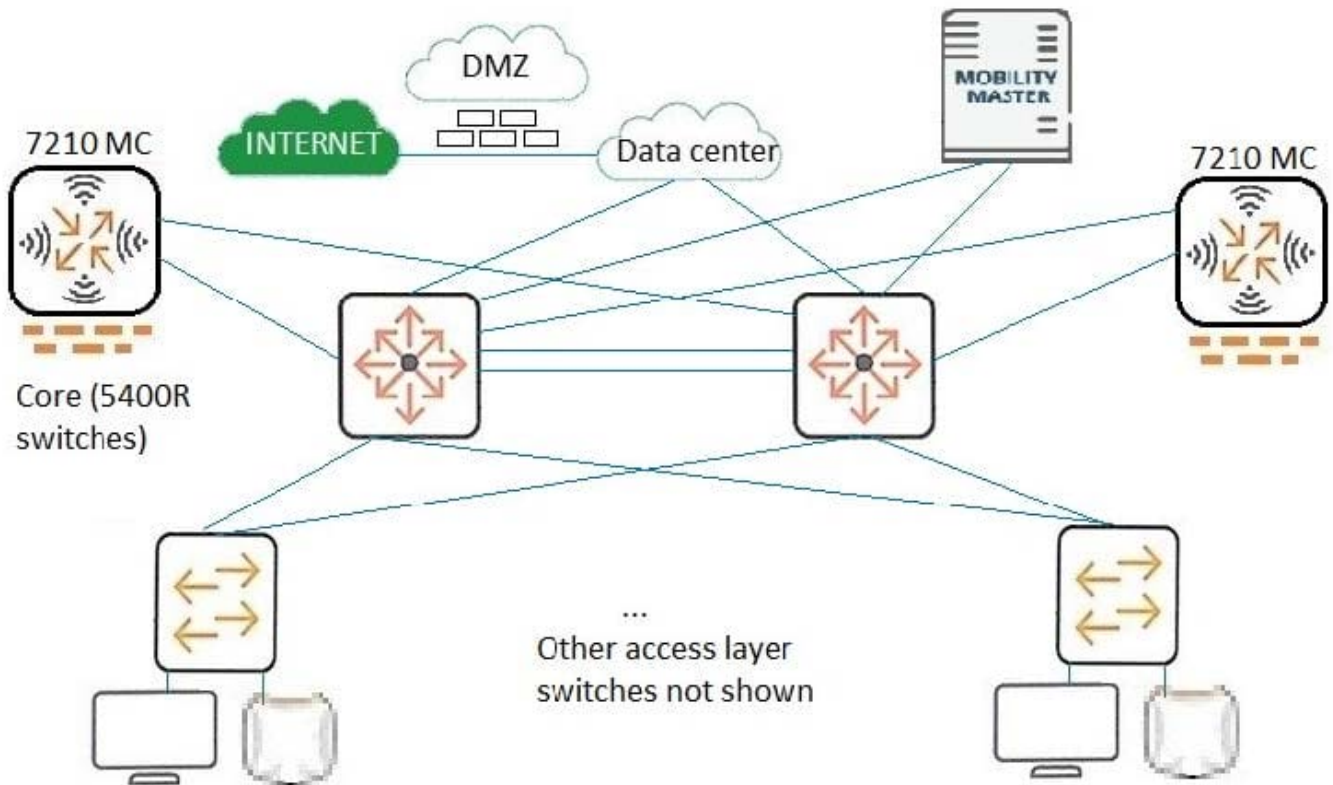
Following Questions and Answers are all new published by HP Official Exam Center

- ⚙️ **Instant Download** After Purchase
- ⚙️ **100% Money Back** Guarantee
- ⚙️ **365 Days** Free Update
- ⚙️ **800,000+** Satisfied Customers



**QUESTION 1**

Refer to the exhibit.



A customer needs a network upgrade. The customer has these availability requirements for wireless access:

One MC and one core switch can fail with immediate, stateful failover for client connections.

Network upgrades can occur without the requirement of a maintenance window.

The exhibit shows the architecture plan.

Which technologies should the architect recommend?

- A. Clustering on MCs and VRRP on Core switches
- B. VRRP on MCs and VSF on Core switches
- C. VRRP on both MCs and Core switches
- D. Clustering on MCs and VSF on Core switches

Correct Answer: A

**QUESTION 2**

A customer has multiple medium and large branch sites, each of which requires between 8 and 16 APs and supports between 200 and 600 wireless clients. Every branch site has an internet connection, which it uses to reach the central data center. The customer would prefer the WAN links to be optimized in the solution. Each side handles between 1 and 2 Gbps of traffic, most of which goes to the central data center. The data center has 7210 controllers for terminating the VPN connections.

Which branch office solution best meets the customer needs?

- A. CAPs and branch office controllers with an SD-WAN license
- B. IAPs and no branch office controllers
- C. CAPs and branch office controllers
- D. RAPs and no branch office controllers

Correct Answer: B

QUESTION 3

What is one reason that an architect might choose to use pico-cell coverage rather than overhead in a stadium?

- A. to avoid major rewiring and construction concerns
- B. to save money by using less powerful and less expensive APs in the deployment
- C. to support a higher device density with a higher level of channel reuse
- D. to maximize coverage per-AP through the use of calculated directional antennas

Correct Answer: C

QUESTION 4

A customer has an Aruba wireless network, which includes two MC 7205s and an MM at the network core. The company now wants to accommodate 50 mobile trainers. These trainers travel around the world and run training events. The trainers often need to access materials in the company data center, but cannot reach materials when they are on the road.

The company wants to give the mobile workforce a secure way to reach the materials they need no matter where they are, including in public spaces like the hotels where they often teach. The customer also requires that the solution be as cost effective as possible while meeting the requirements.

Which plan meets the needs of the mobile trainers?

- A. Add 50 VIA licenses to the MM, and deploy two 7005 MCs in the DMZ.
- B. Add 50 RAPs; add 50 Enterprise licenses and 50 VIA licenses to the MM.
- C. Add 50 RAPs; add 50 Enterprise licenses to the MM, and add two 7005 MCs in the DMZ.



D. Add 50 PEFV licenses to the MM, and add additional 7205 MC to the core.

Correct Answer: B

QUESTION 5

A customer has critical wired endpoints and wants to minimize the chances they will lose their connection to the network. These endpoints are dual-homed, each with two Ethernet connections that are in a link aggregation.

The architect plans to deploy two 5406R switches in the closet.

What else should the architect specify in the plan?

- A. The 5406R switches are in a VSF fabric; each switch has redundant power supplies, but not redundant management modules.
- B. The 5406R switches are not in a VSF fabric; each switch has redundant power supplies but not redundant management modules.
- C. The 5406R switches are not in a VSF fabric; each switch has redundant power supplies and redundant management modules.
- D. The 5406R switches are in a VSF fabric; each switch has redundant power supplies and redundant management modules.

Correct Answer: D

[HPE6-A49 VCE Dumps](#)

[HPE6-A49 Study Guide](#)

[HPE6-A49 Braindumps](#)