



HPE6-A48^{Q&As}

Aruba Certified Mobility Expert 8 Written Exam

Pass HP HPE6-A48 Exam with 100% Guarantee

Free Download Real Questions & Answers **PDF** and **VCE** file from:

<https://www.pass4itsure.com/hpe6-a48.html>

100% Passing Guarantee
100% Money Back Assurance

Following Questions and Answers are all new published by HP Official Exam Center

- ⚙ **Instant Download** After Purchase
- ⚙ **100% Money Back** Guarantee
- ⚙ **365 Days** Free Update
- ⚙ **800,000+** Satisfied Customers



**QUESTION 1**

Refer to the exhibit.

New WLAN

More Secure

Enterprise

Personal

Open

Less Secure

Key management: WPA-2 Personal

Passphrase:

Retype:

MAC authentication: Enabled

Blacklisting: Disabled

General VLANs Security Access

Default role: logon

Mac authentication role: scanners

Show roles

(A48.01114361)

A company acquires ten barcode scanners to run inventory tasks. These Wifi devices support WPA2-PSK security only. The network administrator deploys a WLAN named scanners using the configuration shown in the exhibit.

What must the network administrator do next to ensure that the scanner devices successfully connect to their SSID?

- A. Add scanner MAC addresses in user derivation rules.
- B. Add scanner MAC addresses in the internal database.
- C. Set internal as the MAC authentication server group.
- D. Enable L2 Authentication Fail Through.

Correct Answer: C



QUESTION 2

Refer to the exhibits.

Exhibit 1

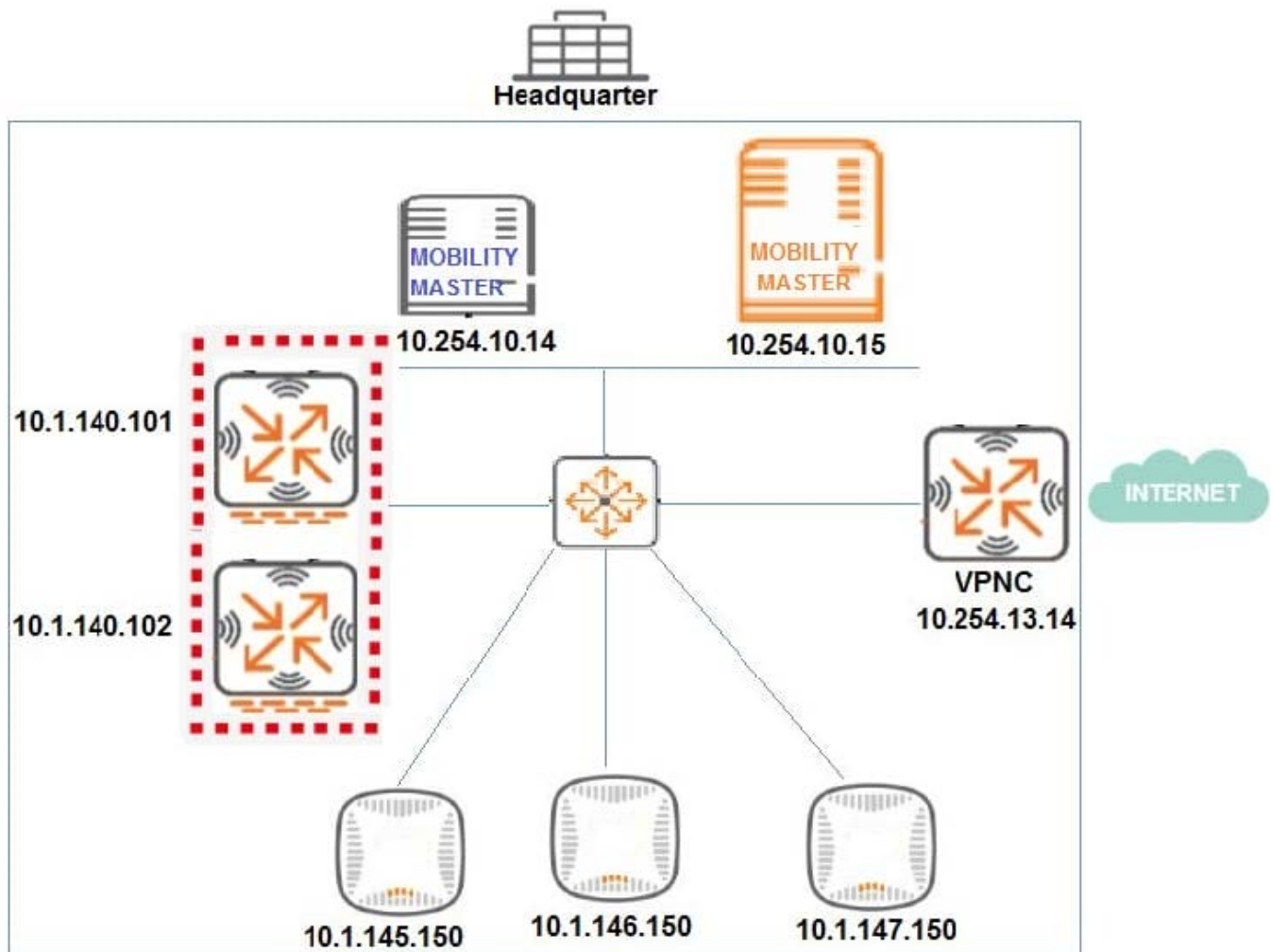


Exhibit 2



(MC14-1) #show ap database | exclude =

AP Database

Name	Group	AP Type	IP Address	Status	Flags	Switch IP	Standby IP
------	-------	---------	------------	--------	-------	-----------	------------

Total APs:0

(MC14-1) #ping 10.1.145.150

Press 'q' to abort.

Sending 5, 92-byte ICMP Echos to 10.1.145.150, timeout is 2 seconds:

!!!!

Success rate is 100 percent (5/5), round-trip min/avg/max = 0.206/0.2402/0.356 ms

Exhibit 3



```
[ 11.611533] bonding: bond0: link status definitely down for interface eth1, disabling it
Starting watchdog process...
Getting an IP address...
[ 12.689236] device eth0 entered promiscuous mode
10.1.145.150 255.255.255.0 10.1.145.1
Running ADP...Done.Master is 10.1.140.100
[ 22.039696] ath_hal: 0.9.17.1 (AR5416, AR9380, REGOPS_FUNC, WRITE_EEPROM, 11D)
[ 22.131095] ath_rate_atheros: Copyright (c) 2001-2005 Atheros Communications, Inc, All Rights Reserved

[ 37.552112] pktlog_init: Initializing Pktlog for AR900B, pktlog_hdr_size = 16
[ 37.638632] pktlog_init: Initializing Pktlog for AR900B, pktlog_hdr_size = 16
AP rebooted due to loss power
shutting down watchdog process (nanny will restart it)...
<<<<< Welcome to the Access Point >>>>>
- # ping 10.1.140.100
PING 10.1.140.100 (10.1.140.100): 56 data bytes
^C
--- 10.1.140.100 ping statistics ---
40 packets transmitted, 0 packets received, 100% packet loss
- # ping 10.1.140.1
PING 10.1.140.1 (10.1.140.1): 56 data bytes
64 bytes from 10.1.140.1: icmp_seq=0 ttl=255 time=0.4 ms
64 bytes from 10.1.140.1: icmp_seq=1 ttl=255 time=0.4 ms
64 bytes from 10.1.140.1: icmp_seq=2 ttl=255 time=0.3 ms
64 bytes from 10.1.140.1: icmp_seq=3 ttl=255 time=0.3 ms
64 bytes from 10.1.140.1: icmp_seq=4 ttl=255 time=0.3 ms
^C
--- 10.1.140.1 ping statistics ---
5 packets transmitted, 5 packets received, 0% packet loss
round-trip min/avg/max = 0.3/0.3/0.4 ms
- #
```

A network engineer deploys a Master Controller (MC) cluster at Headquarter to offer high levels of redundancy, and prepares the wired side of the network. This preparation includes the VLAN, DHCP Settings, and unicast routing services that APs require to reach the cluster.

The network engineer waits for 20 minutes after connecting the APs and sees that no SSIDs are advertised. The network engineer logs into one of the MCs and one of the AP's consoles to obtain the outputs shown in the exhibits.

What can the network engineer do to fix the APs discovery process, to ensure the best scalability even if one MC fails?

- A. Reprovision the APs with a different Master IP.
- B. Modify the IP address in one of the MCs.
- C. Modify option 43 in the DHCP pool.
- D. Create a VRRP instance in the MCs.

Correct Answer: C



QUESTION 3

Refer to the exhibit.

Additional AMP Services	
Enable AMON Data Collection:	<input checked="" type="radio"/> Yes <input type="radio"/> No
Enable Clarity Data Collection: <small>Requires AOS version 6.4.3 and above</small>	<input checked="" type="radio"/> Yes <input type="radio"/> No
Enable AppRF Data Collection:	<input checked="" type="radio"/> Yes <input type="radio"/> No
AppRF Storage Allocated (GiB): <small>Greater than or equal to 2 GiB</small>	<input type="text" value="32"/>
Enable UCC Data Collection: <small>Requires AOS version 6.4 and above</small>	<input checked="" type="radio"/> Yes <input type="radio"/> No
Enable UCC Calls Stitching (Heuristics):	<input checked="" type="radio"/> Yes <input type="radio"/> No
Prefer AMON vs SNMP Polling:	<input checked="" type="radio"/> Yes <input type="radio"/> No
Enable Syslog and SNMP Trap Collection:	<input checked="" type="radio"/> Yes <input type="radio"/> No
Require SSH host key verification:	<input type="radio"/> Yes <input checked="" type="radio"/> No
Validate PAPI Key:	<input checked="" type="radio"/> Yes <input type="radio"/> No
PAPI Key:	<input type="text" value="■ ■ ■ ■ ■ ■ ■ ■"/>
Confirm PAPI Key:	<input type="text" value="■ ■ ■ ■ ■ ■ ■ ■"/>
Disable TLS 1.0 and 1.1: After changing the TLS status here you must restart the AMP to have it take effect	<input checked="" type="radio"/> Yes <input type="radio"/> No

(A48.01114472)

A network administrator configures a Mobility Master (MM)-Mobility Controller (MC) solution and integrates it with AirWave. The network administrator configures the SNMP and terminal credentials in the MM and MC, and then monitors the mobility devices from AirWave, including Clarity for user association and basic network services verification. However, AirWave does not display any UCC data that is available in the MM dashboard.

Based on the information shown in the exhibit, which configuration step should the network administrator do next in the MM to complete the integration with AirWave?

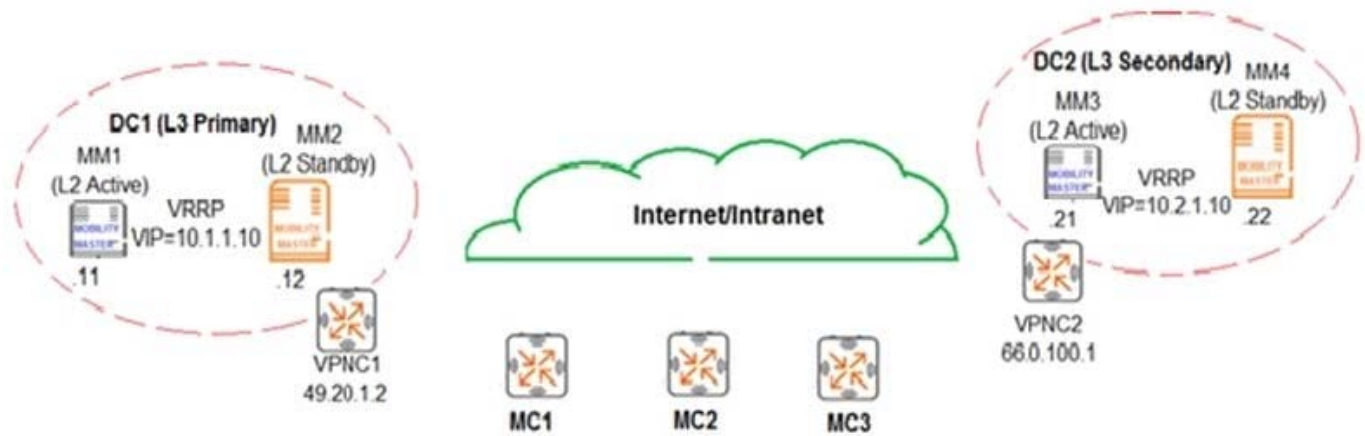
- A. Define AirWave as a management server in the MM.
- B. Enable the inline network services statistics in the AMP profile.
- C. Enable UCC monitoring in the AMP profile.
- D. Verify the papi-security key in the AMP profile.

Correct Answer: B

QUESTION 4



Refer to the exhibit.



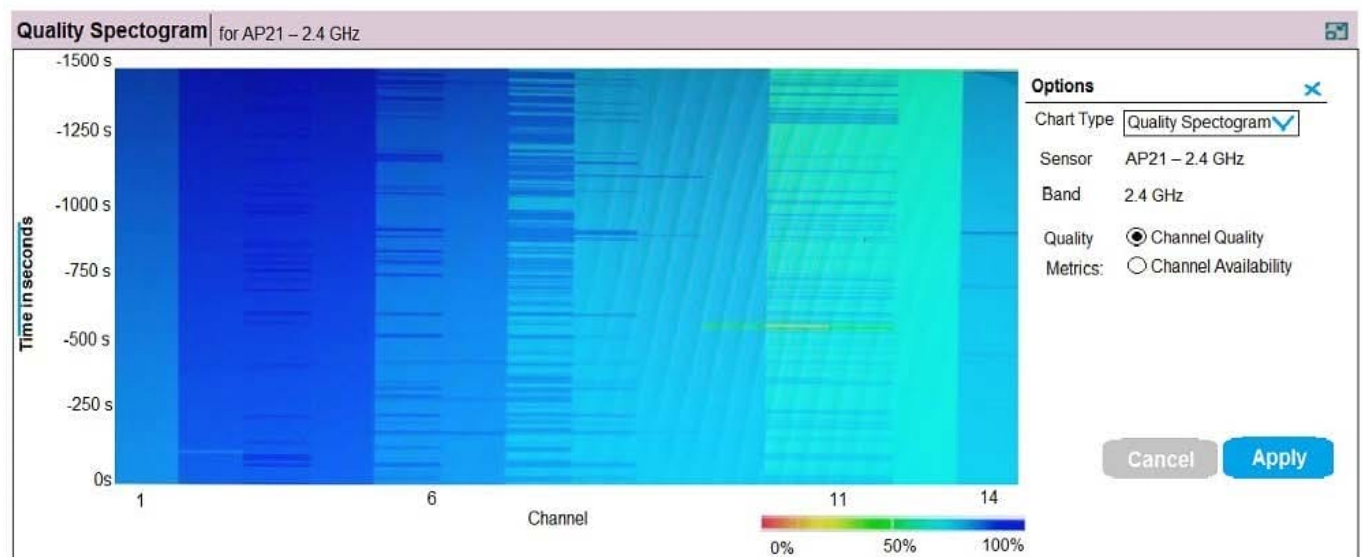
An Aruba network is deployed with L2 and L3 Mobility Master (MM) redundancy across two datacenters, as shown in the exhibit. The network administrator confirms that all Mobility Controllers (MC) are currently communicating with MM1, which is the L2 Active, and L3 Primary. Which MM IP will MCs communicate with if MM1 fails?

- A. 10.1.1.10
- B. 10.1.1.12
- C. 10.2.1.10
- D. 10.2.1.21

Correct Answer: B

QUESTION 5

Refer to the exhibit.



(A48.01114442)



Based on the output shown in the exhibit, which channel offers the highest quality?

- A. Channel 1
- B. Channel 6
- C. Channel 11
- D. Channel 14

Correct Answer: C

[Latest HPE6-A48 Dumps](#)

[HPE6-A48 PDF Dumps](#)

[HPE6-A48 Practice Test](#)