



HPE2-K45^{Q&As}

Using HPE SimpliVity

Pass HP HPE2-K45 Exam with 100% Guarantee

Free Download Real Questions & Answers **PDF** and **VCE** file from:

<https://www.pass4itsure.com/hpe2-k45.html>

100% Passing Guarantee
100% Money Back Assurance

Following Questions and Answers are all new published by HP Official Exam Center

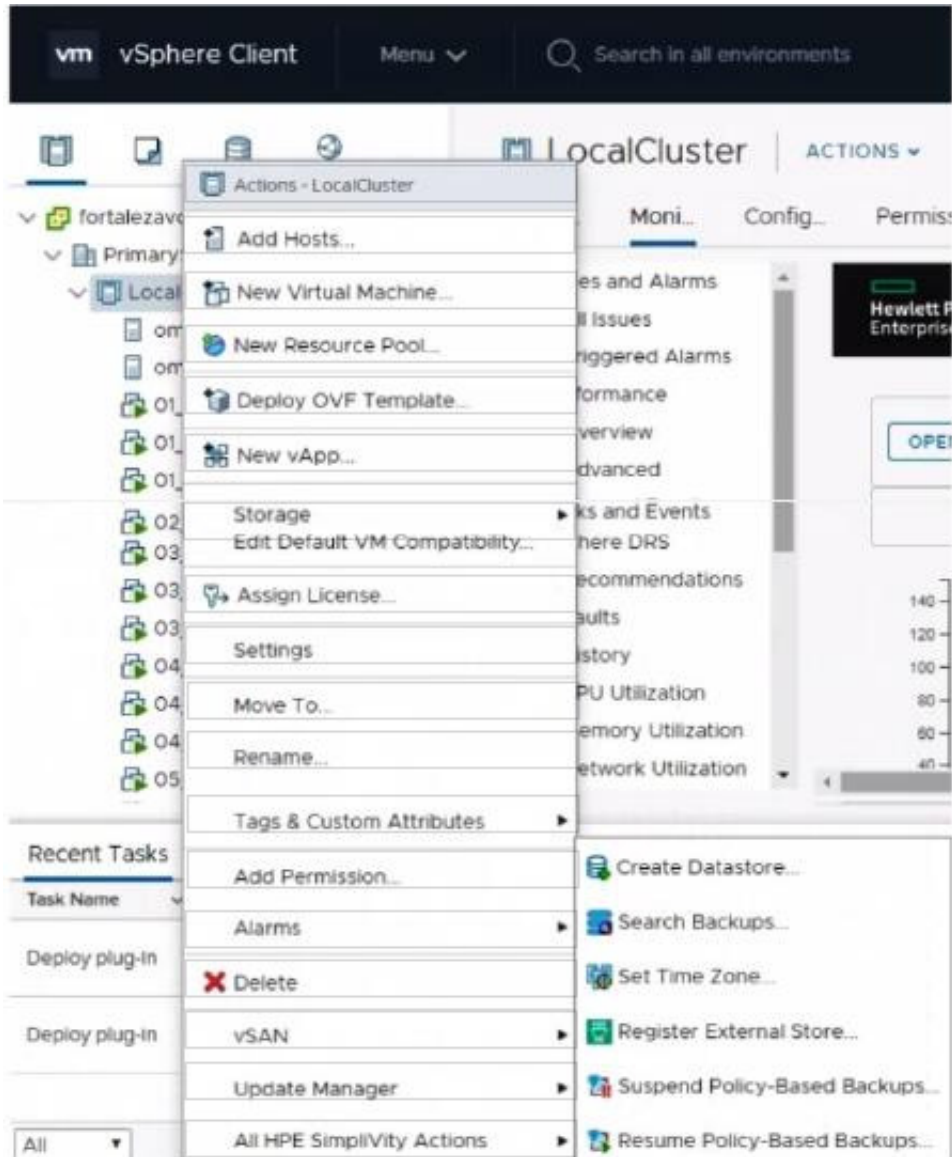
- ⚙ **Instant Download** After Purchase
- ⚙ **100% Money Back** Guarantee
- ⚙ **365 Days** Free Update
- ⚙ **800,000+** Satisfied Customers



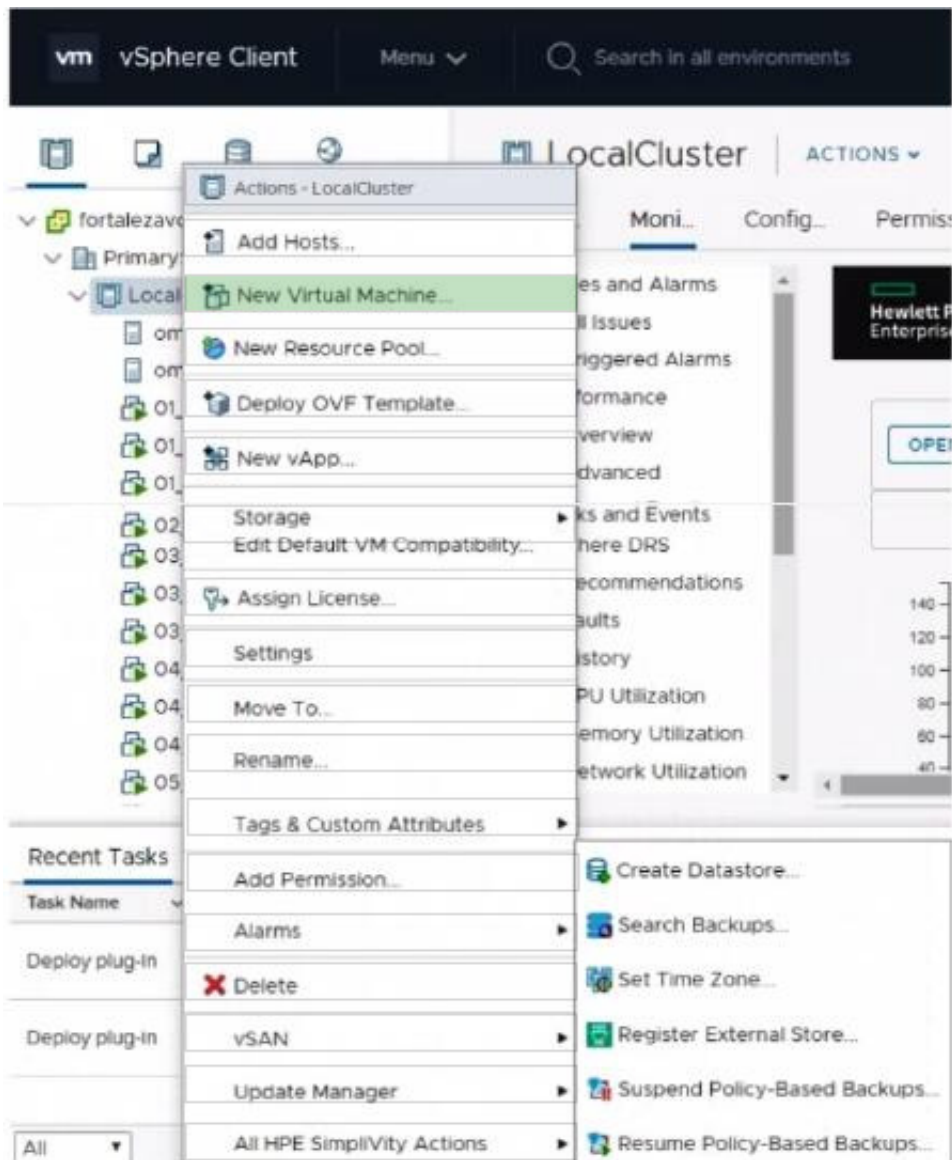
**QUESTION 1**

Click the option that will allow you to integrate HPE SimpliVity with HPE Storence.

Hot Area:



Correct Answer:



QUESTION 2

Hyper Protected refers to which HPE SimpliVity ability?

- A. Backup or restore 1TB VM in less than 1 minute.
- B. Restore individual files from a VM backup.
- C. Define a storage policy using RAID 6 or RAID 60 to protect the VM.
- D. Integrate with Veeam to provide an external backup solution.

Correct Answer: A

QUESTION 3



What happens if an HPE mniStack Virtual Controller (VC) fails in a multi-node HPE SimpliVrty cluster?

- A. All VMs on the node restart in a node where the replica resides.
- B. HPE SimpliVity Intelligent Workload ptimizer restores the VC from backups.
- C. The IP address of the VC fails over to another HPE SimpliVity node.
- D. All VMs on the node go on standby mode to avoid data loss.

Correct Answer: A

QUESTION 4

You are designing an HPE SimpliVity solution with HPE Storence.

Which design aspects will you evaluate to optimize replication performance?

- A. Performance optimization features provided by VMFS datastores comapred to NFS datastores
- B. Number of the HPE SimpliVity clusters and Catalyst stores used
- C. Intelligent Workload optimizer settings
- D. HPE SimpliVity model used

Correct Answer: A

QUESTION 5

You are designing a new HPE SimpliVity solution. You want to confirm your configuration is compatible and supported with the customer requirements. Which items can you find in the HPE SimpliVity mniStack Interoperability Guide? (Select two.)

- A. GPU Accelerators
- B. ESXi version
- C. Guest S version
- D. vSphere License
- E. Processor model

Correct Answer: D

[HPE2-K45 Practice Test](#)

[HPE2-K45 Exam Questions](#)

[HPE2-K45 Braindumps](#)