



# HPE0-S58<sup>Q&As</sup>

Implementing HPE Composable Infrastructure Solutions

**Pass HP HPE0-S58 Exam with 100% Guarantee**

Free Download Real Questions & Answers **PDF** and **VCE** file from:

<https://www.pass4itsure.com/hpe0-s58.html>

100% Passing Guarantee  
100% Money Back Assurance

Following Questions and Answers are all new published by HP Official Exam Center

- ⚙️ **Instant Download** After Purchase
- ⚙️ **100% Money Back** Guarantee
- ⚙️ **365 Days** Free Update
- ⚙️ **800,000+** Satisfied Customers





### QUESTION 1

Which storage solution can be used for volume provisioning using HPE Composer?

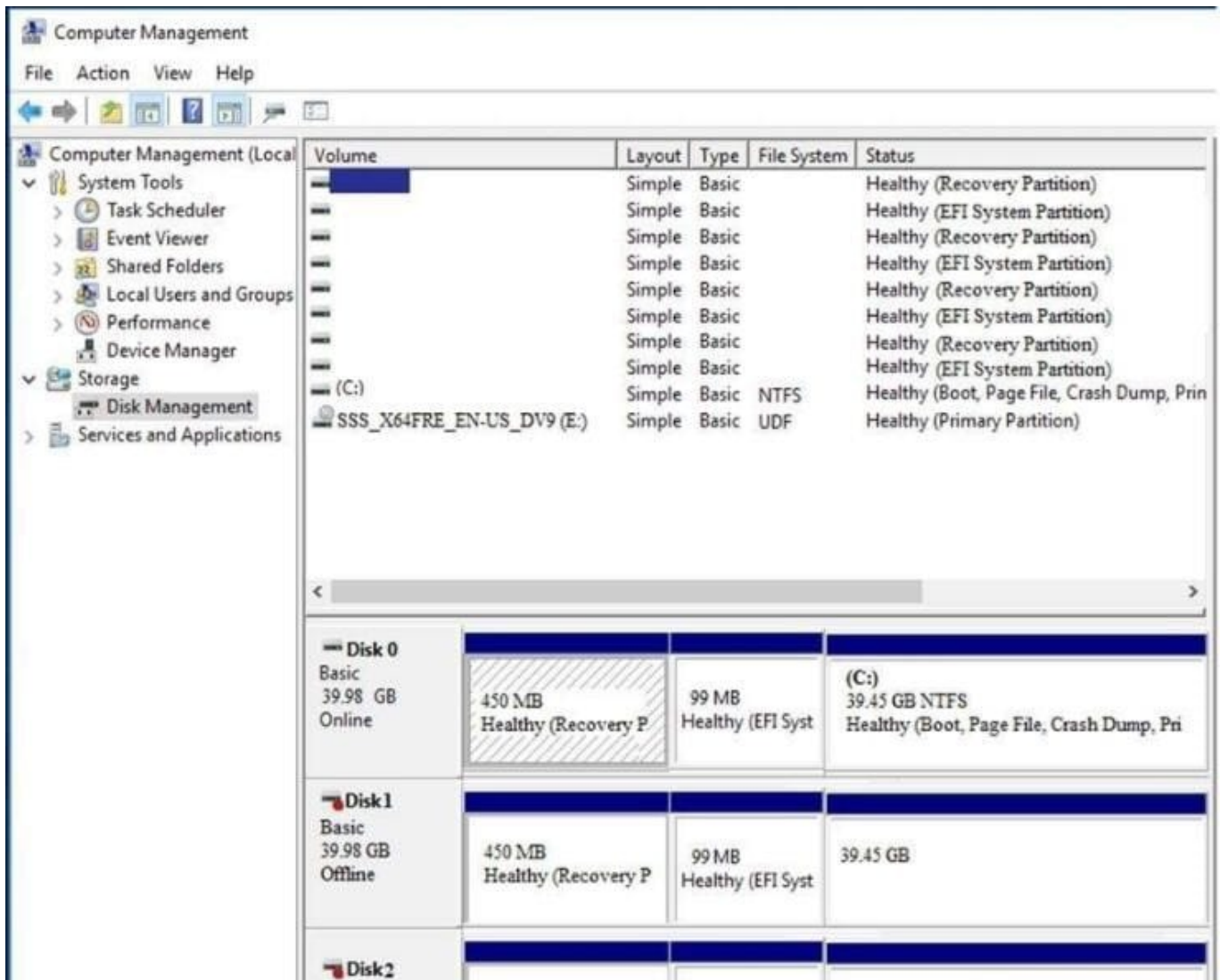
- A. MSA 2040
- B. HPE StoreEasy 1560
- C. HPE 3PAR StoreServ
- D. HPE XP7 Storage

Correct Answer: C

Reference: [https://www.karma-group.ru/upload/iblock/30b/hpe\\_synergy\\_composer.pdf](https://www.karma-group.ru/upload/iblock/30b/hpe_synergy_composer.pdf)

---

### QUESTION 2



A customer connected a logical drive from 3PAR StoreServ array to the Windows Server 2016 as a data drive.

The customer complains that in the Disk Manager, they can see the same volume four times.

What can an integrator do to fix this issue?

- A. Delete any three logical drives and leave one of them
- B. Go to the SSMC and enable multipathing option for this volume
- C. Create an NTFS partition on any logical drive to consolidate the logical drives
- D. Install an MPIO component to hide redundant paths to the volume

Correct Answer: B

### QUESTION 3

A customer wants to implement HPE Global Dashboard for their environment based on HPE Synergy and HPE



SimpliVity nodes. What must an integrator be aware of when deploying HPE Global Dashboard for this customer?

- A. HPE Global Dashboard agent must be installed on HPE SimpliVity nodes
- B. The Single Sign-On feature is not supported for HPE SimpliVity nodes
- C. HPE SimpliVity nodes must be licensed within HPE Global Dashboard
- D. Only HPE SimpliVity 380 is supported because of the OmniStack hardware card

Correct Answer: B

---

#### QUESTION 4

A customer wants to boot Synergy compute nodes from external LUN located on HPE MSA 2050 SAN Storage. What should an integrator consider when implementing this configuration?

- A. Using HPE Composer, only volumes up to 4TB can be created on the MSA2050
- B. Additional integration license must be purchased for the MSA2050 and Synergy platforms
- C. Automated zoning functionality cannot be used, as MSA2050 is not supported in HPE Composer
- D. MSA2050 must be imported first to the HPE Composer before volume presentation can be done

Correct Answer: B

---

#### QUESTION 5

A customer plans to deploy VMware HA cluster using the Hypervisor Cluster Profile feature of OneView. What must the customer consider when configuring the HA cluster?

- A. The HA cluster can be enabled only on the nodes with vSAN enabled
- B. The HA cluster must have extra computer resources available as failover capacity
- C. The HA cluster can coexist with a DRS cluster if mixed CPU architecture is used
- D. The HA cluster can be configured only when all nodes are exactly the same

Correct Answer: B

Reference: [https://www.vmware.com/pdf/vmware\\_ha\\_wp.pdf](https://www.vmware.com/pdf/vmware_ha_wp.pdf)

[HPE0-S58 PDF Dumps](#)

[HPE0-S58 Practice Test](#)

[HPE0-S58 Exam Questions](#)