



HPE0-J50^{Q&As}

Integrating Protected HPE Storage Solutions

Pass HP HPE0-J50 Exam with 100% Guarantee

Free Download Real Questions & Answers **PDF** and **VCE** file from:

<https://www.pass4itsure.com/hpe0-j50.html>

100% Passing Guarantee
100% Money Back Assurance

Following Questions and Answers are all new published by HP Official Exam Center

- ⚙️ **Instant Download** After Purchase
- ⚙️ **100% Money Back** Guarantee
- ⚙️ **365 Days** Free Update
- ⚙️ **800,000+** Satisfied Customers



**QUESTION 1**

A storage integrator is creating a domain in the 3PAR StoreServ Management Console (SSMC).

Which settings of a 3PAR virtual domain have to be configured? (Choose two.)

- A. Name
- B. OpenLDAP server
- C. Active Directory Domain Controller
- D. Storage Controller
- E. Storage System

Correct Answer: AE

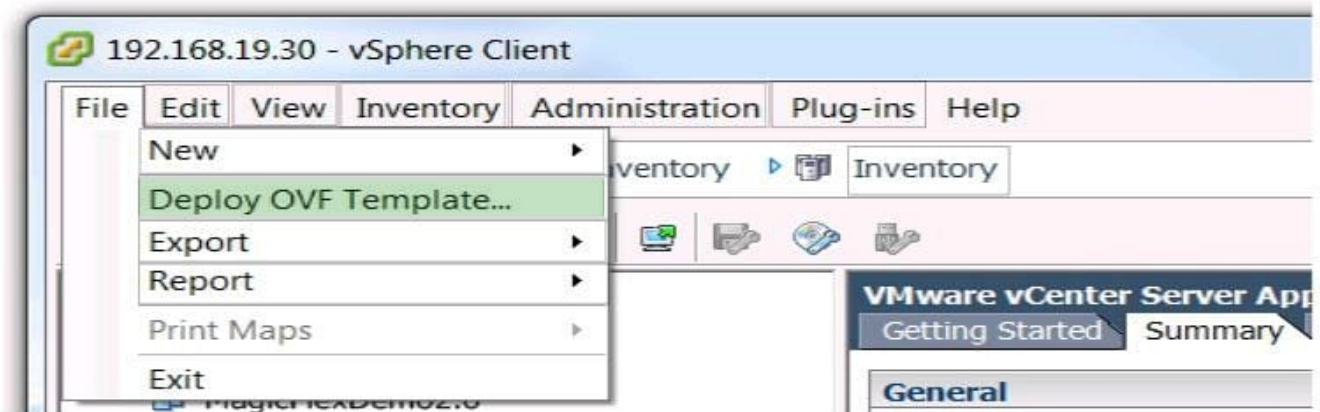
QUESTION 2

Click the menu option a storage integrator will use to install a new StoreOnce VSA solution.

Hot Area:



Correct Answer:



Reference: https://h20628.www2.hp.com/km-ext/kmcsdirect/emr_na-a00058155en_us-1.pdf

QUESTION 3

Refer to the exhibit.

```
Administrator: Command Prompt - cli
Use setclienuv command to change the table format options.
BB2 cli%
13:15:10 02/20/2015
node,cpu user sys idle intr/s ctxt/s
2,0 0 0 100
2,1 0 0 100
2,2 0 1 99
2,3 0 0 100
2,total 0 0 100 950 1359
3,0 0 0 100
3,1 0 1 99
3,2 0 0 100
3,3 0 0 100
3,total 0 0 100 1961 3379
Press the enter key to stop...
13:15:12 02/20/2015
node,cpu user sys idle intr/s ctxt/s
2,0 0 0 100
2,1 1 0 99
2,2 0 2 98
2,3 0 2 99
```

A customer wants to implement compression on an HPE 3PAR system and is concerned about potential bottlenecks on the CPU. Which CLI command can be used to display the CPU utilization and create a performance baseline?

- A. perfcpu
- B. cpustat
- C. showcpu
- D. statcpu

Correct Answer: D

Reference: <https://support.hpe.com/hpsc/doc/public/display?docId=c04204279>



QUESTION 4

Refer to the exhibit.

Hewlett Packard Enterprise MSA 2040 SAN Storage Management Utility System: SAN7 MSA2040 System Version GL220P008

Action

Components
Select components from the table and click Show Data Below:
Show: **Host Ports**

ID	Port Type
hostport_A1	FC
hostport_A2	FC
hostport_A3	iSCSI
hostport_A4	iSCSI
hostport_B1	FC
hostport_B2	FC
hostport_B3	iSCSI
hostport_B4	iSCSI

Show Data

PERFORMANCE

Current Data
Current data samples show the most recent sample updates every 30 seconds
Sample time:
Total Duration of All Data Samples
Showing 1-0 of 0

	IOPS	B/s	L'O Response	Read Response	Write Response	Queue
No data available in the table						

A customer complains of poor performance on an HPE MSA 2040 storage array. The storage administrator thinks that the host ports could be limiting factor because only two ports are connected to the SAN fabric. To verify this the administrator wants to use the performance monitor of the MSA system, but has never used this monitor before. The administrator logs on to a HPE MSA 2040 in the lab to get familiar with performance monitoring.

Which value would indicate a host port performance issue?

- A. Read Response
- B. IOPS
- C. B/s
- D. Queue Depth

Correct Answer: A

QUESTION 5

Action

Clear Filters Show 10 Showing 1-1 of 1 (1 selected)

Name	Health	Total size	Class	Avail	Volumes	Disk Groups
A	OK	2978.2GB	Virtual	2918.1GB	4	3

Related Disk Groups

Clear Filters Show 10 Showing 1-3 of 3

Name	Health	Pool	RAID	Class	Disk Type	Size	Free	Current Job	Status	Disks
Standard	OK	A	RAID6	Virtual	SAS (Standard)	584.4GB	505.3GB		FTCL	5
Archive	OK	A	RAID0	Virtual	SAS MDL (Archive)	1096.2GB	1065.2GB		FTCL	4
Performance	OK	A	RAID1	Virtual	sSAS (Performance)	297.5GB	286.5GB		FTCL	2

A system administrator is investigating an issue on an HPE MSA connected to a server with a Windows 2008 R2 operating system. The customer is complaining that after deleting temporary files on the volume the available space does not increase.

What is the possible cause of this problem?



- A. The Compact feature is not supported in this operating system.
- B. Volume needs to be converted to linear type.
- C. T10 UNMAP is not supported in this operating system.
- D. Housekeeping processes on the MSA are disabled.

Correct Answer: C

[HPE0-J50 PDF Dumps](#)

[HPE0-J50 VCE Dumps](#)

[HPE0-J50 Practice Test](#)