



HP2-Z37^{Q&As}

Fast Track - Applying HP FlexNetwork Fundamentals

Pass HP HP2-Z37 Exam with 100% Guarantee

Free Download Real Questions & Answers **PDF** and **VCE** file from:

<https://www.pass4itsure.com/hp2-z37.html>

100% Passing Guarantee
100% Money Back Assurance

Following Questions and Answers are all new published by HP Official Exam Center

-  **Instant Download** After Purchase
-  **100% Money Back** Guarantee
-  **365 Days** Free Update
-  **800,000+** Satisfied Customers





QUESTION 1

Refer to the exhibits.

Exhibit 1

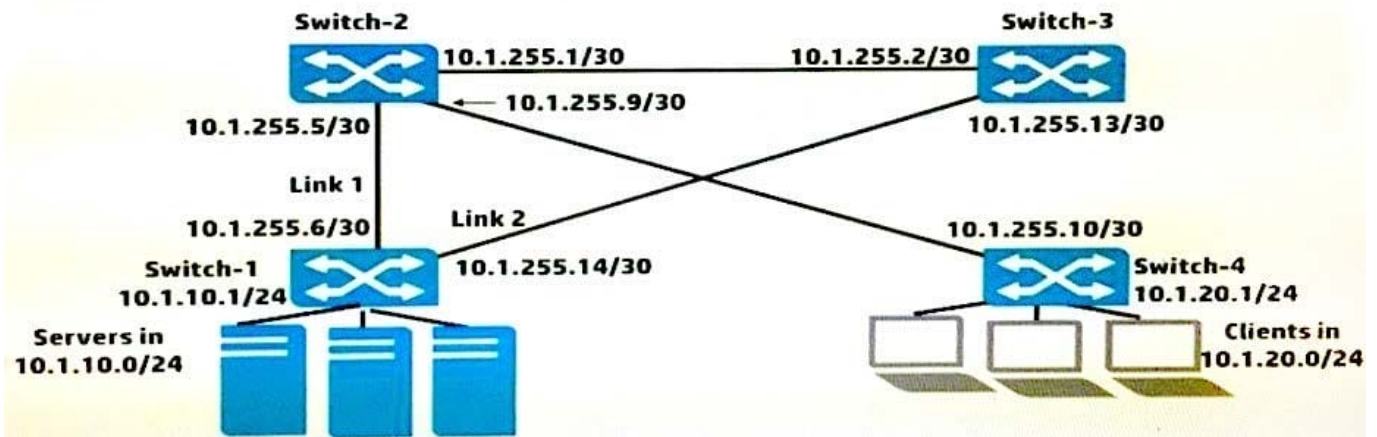


Exhibit 2

```
<Switch-1> display ip routing-table protocol static
Public Routing Table : Static
Summary Count : 1

Static Routing table Status : < Active>
Summary Count : 1

Destination/Mask Proto Pre Cost NextHop Interface
10.1.20.0/24 Static 60 0 10.1.255.5 XG1/0/25

<Switch-2> display ip routing-table protocol static
Public Routing Table : Static
Summary Count : 2

Static Routing table Status : < Active>
Summary Count : 2

Destination/Mask Proto Pre Cost NextHop Interface
10.1.10.0/24 Static 60 0 10.1.255.6 XG1/0/25
10.1.20.0/24 Static 60 0 10.1.255.10 XG1/0/26

<Switch-3> display ip routing-table protocol static
Public Routing Table : Static
Summary Count : 2

Static Routing table Status : < Active>
Summary Count : 2

Destination/Mask Proto Pre Cost NextHop Interface
10.1.10.0/24 Static 60 0 10.1.255.14 XG1/0/25
10.1.20.0/24 Static 60 0 10.1.255.1 XG1/0/26

<Switch-4> display ip routing-table protocol static
Public Routing Table : Static
Summary Count : 1

Static Routing table Status : < Active>
Summary Count : 1

Destination/Mask Proto Pre Cost NextHop Interface
10.1.10.0/24 Static 60 0 10.1.255.9 XG1/0/25
```

All of the switches in Exhibit 1 are routing switches. Exhibit 2 shows the routes configured on these switches. The direct (connected) routes are not shown, but assume that links are configured with the IP addresses shown in Exhibit 1. The network administrator wants to protect communications between clients and servers in case Link 1 fails. What should the administrator do to protect these communications in this failover situation?

- A. Add a redundant route to 10.1.10.0/24 on Switch-4 and a redundant route to 10.1.20.0/24 on Switch-1.
- B. Add a redundant route to 10.1.20.0/24 on Switch-1 and a redundant route to 10.1.20.0/24 on Switch-2.
- C. Add a redundant route to 10.1.10.0/24 on Switch-1 and a redundant route to 10.1.20.0/24 on Switch-4.
- D. Add a redundant route to 10.1.20.0/24 on Switch-1 and a redundant route to 10.1.10.0/24 on Switch-2.

Correct Answer: A

QUESTION 2



What is true about the community string used for SNMPv1 and SNMPv2c?

- A. The community string encrypts the SNMP message, but does not hash it, providing for data privacy.
- B. The community string hashes the SNMP message, but does not encrypt it, providing for data integrity.
- C. The community string encrypts and hashes the SNMP message, providing for data integrity and privacy.
- D. The community string is like a password transmitted in cleartext, providing no data integrity or privacy.

Correct Answer: D

QUESTION 3

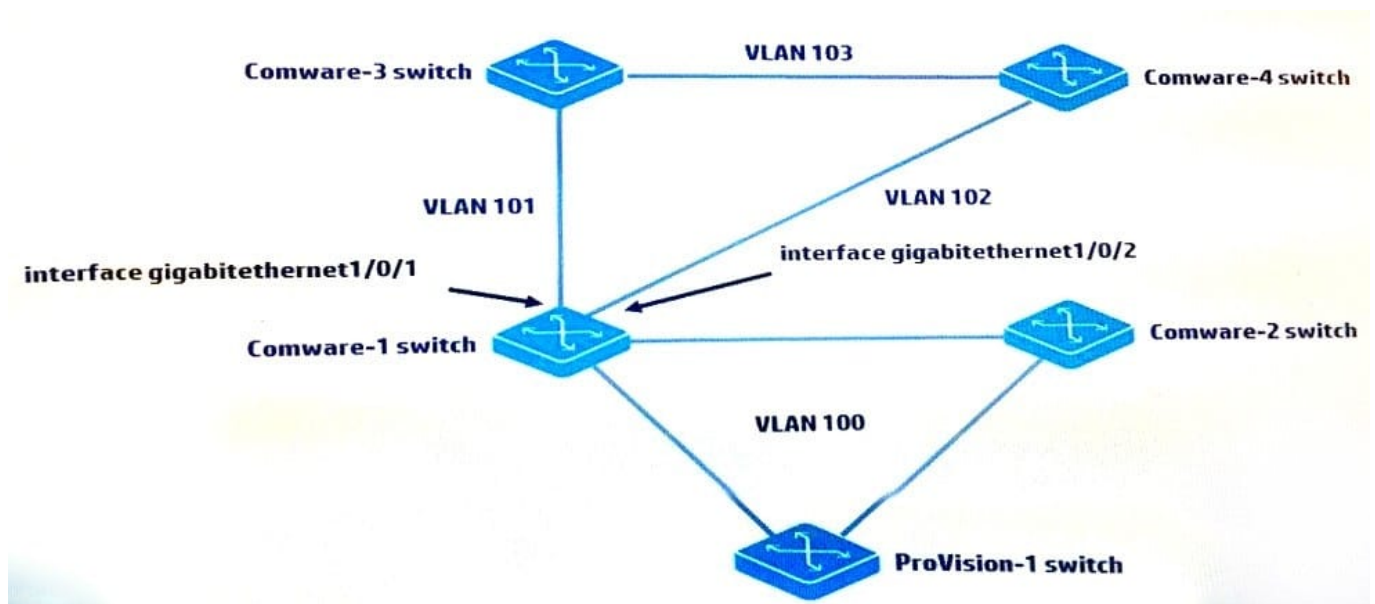
Which HP device or port type can modify, read, and respond with frames that include 802.1Q VLAN tags?

- A. Comwaretrunk ports
- B. Comwareroute-mode ports
- C. ProVisionloopback ports
- D. ProVisionuntagged ports

Correct Answer: A

QUESTION 4

Refer to the exhibit.



MSTP is configured on all switches shown in the exhibit. The Comware-1, Comware-3, and Comware-4 switches are set up for OSPF. Comware-1 and Comware-4 switches fail to achieve neighbor adjacency. The network administrator analyzes the issue and determines that MSTP is blocking on port gigabitethernet1/0/2 on Comware-1.



Which configuration should the administrator configure on ports g1/0/1 and g1/0/2 to allow Comware-1 to form the correct OSPF adjacencies with Comware-3 and Comware-4?

- A. interface g1/0/1 spanning-tree bpdu-filter quit interface g1/0/2 spanning-tree bpdu-filter quit
- B. interface g1/0/1 undo stp enable quit interface g1/0/2 undo stp enable quit
- C. interface g1/0/1 stp link-mode route quit interface g1/0/2 stp link-mode route quit
- D. interface g1/0/1 stp bpdu-filter quit interface g1/0/2 stp bpdu-filter quit

Correct Answer: A

QUESTION 5

Which credential is required to validate SNMPv2c write requests?

- A. Community string
- B. Scheme
- C. MD5 authkey
- D. AAA authentication

Correct Answer: A

[Latest HP2-Z37 Dumps](#)

[HP2-Z37 Practice Test](#)

[HP2-Z37 Braindumps](#)