



HP2-Z34^{Q&As}

Building HP FlexFabric Data Centers

Pass HP HP2-Z34 Exam with 100% Guarantee

Free Download Real Questions & Answers **PDF** and **VCE** file from:

<https://www.pass4itsure.com/hp2-z34.html>

100% Passing Guarantee
100% Money Back Assurance

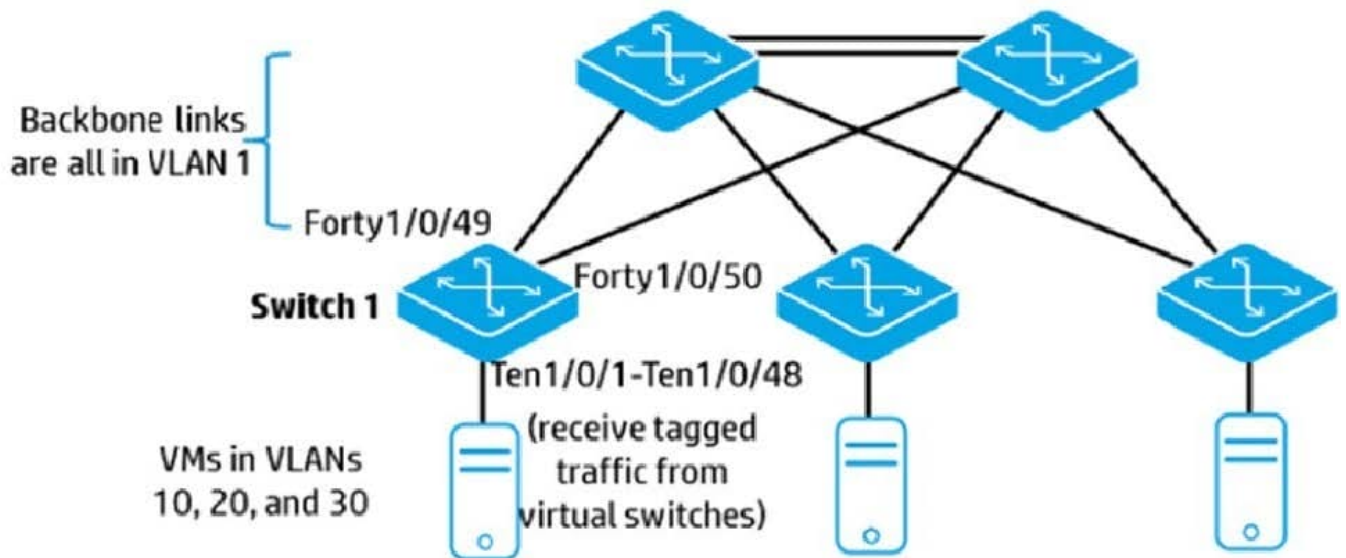
Following Questions and Answers are all new published by HP Official Exam Center

-  **Instant Download** After Purchase
-  **100% Money Back** Guarantee
-  **365 Days** Free Update
-  **800,000+** Satisfied Customers



**QUESTION 1**

Refer to the exhibit The company wants to use TRILL in the backbone links shown in the exhibit. Servers use VLANs 10, 20, and 30 and should be able to communicate across the backbone. On which Switch 1 interfaces should the administrator enable TRILL?



- A. VLAN interface 1 only
- B. VLAN interfaces 1,10, 20, and 30
- C. interfaces Forty1/0/49 and Forty1/0/50 only
- D. interfaces Ten1/0/1 to Ten1/0/48, and Forty1/0/49 and Forty1/0/50

Correct Answer: C

QUESTION 2

What must be used when implementing the backbone multicast feature to isolate multicasts in the SPBM region?

- A. maximum of two Equal Cost Tree (ECT) algorithms
- B. single I-SID for all VLANs belonging to the same customer
- C. head-end replication for multicasts
- D. odd-numbered VLAN IDs for B-VLANs

Correct Answer: C



QUESTION 3

An administrator configures an HP Comware switch to support FCoE in Fibre Channel Forwarder (FCF) mode. A switch interface connects to a server FC host bus adapter (HBA). What is the correct configuration for this port?

- A. bound to a VFC interface, which is in F mode
- B. bound to a VFC interface, which is in E mode
- C. FC port >n F mode
- D. FC port in NP mode

Correct Answer: B

QUESTION 4

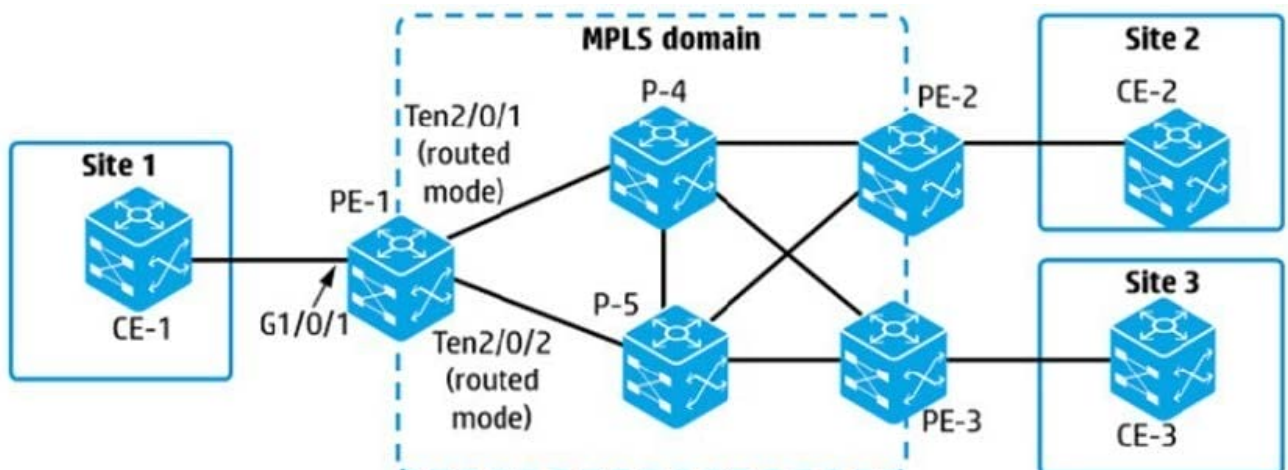
An administrator creates two VPN instances on an HP Comware switch, in addition to the public instance. The switch implements routing protocols and MPLS. Which statement is correct about the routing tables and Label Forwarding Information Bases (LFIBs) maintained by the switch?

- A. The switch uses a single routing table and maintains a separate LFIB for each VPN instance
- B. The switch maintains a separate routing table and LFIB for each VPN instance, but the public tables automatically include entries from the other instances.
- C. The switch maintains a separate routing table and LFIB for each VPN instance.
- D. The switch maintains a separate routing table for each VPN instance and uses a single LFIB

Correct Answer: D

QUESTION 5

Refer to the exhibit





An administrator is setting up an MPLS Layer 2 VPN between customer Sites 1 and 2 and is defining the pseudo wire (PW) ID for this purpose. How should the PW IDs and router values be configured?

- A. Set the PW ID to a different value on PE-1 and PE-2 The value on each router must match the label advertised by the peer for its loopback address.
- B. Set the PW ID to a different value on PE-1 and PE-2 Also use a different value from other PWs on these routers.
- C. Set the PW ID to the same value on PE-1 and PE-2. Use a different value from other PWs on these routers.
- D. Set the PW ID to the same value on PE-1 and PE-2. The value on each router must match the S-VLAN ID for the associated service instance.

Correct Answer: D

[HP2-Z34 Practice Test](#)

[HP2-Z34 Exam Questions](#)

[HP2-Z34 Braindumps](#)