



HP2-Z34^{Q&As}

Building HP FlexFabric Data Centers

Pass HP HP2-Z34 Exam with 100% Guarantee

Free Download Real Questions & Answers **PDF** and **VCE** file from:

<https://www.pass4itsure.com/hp2-z34.html>

100% Passing Guarantee
100% Money Back Assurance

Following Questions and Answers are all new published by HP Official Exam Center

- ⚙️ **Instant Download** After Purchase
- ⚙️ **100% Money Back** Guarantee
- ⚙️ **365 Days** Free Update
- ⚙️ **800,000+** Satisfied Customers



**QUESTION 1**

An HP Comware switch port is being connected to a server Converged Network Adaptor (CNA). The CNA and the switch port need to communicate about parameters for various priority flow control (PFC) and bandwidth control mechanisms. How does the administrator enable these communications?

- A. Enable PFC globally and then enable PFC on the switch port
- B. Enable the Fibre Channel (FC) fabric port function on the switch port and then set the port as an F-port.
- C. Enable Ethernet Virtual Bridging (EVB) on the switch port.
- D. Enable LLDP globally and then enable Data Center Bridging eXchange (DCBX) TLVs on the switch port

Correct Answer: D

QUESTION 2

HP Comware Switch 1 connects to servers with Converged Network Adapters (CNAs) that send data and FCoE storage traffic. Switch 1 should forward all FCoE traffic to an upstream FCoE switch. Switch 2 which will handle all the FLOGI requests, zoning, and FC traffic forwarding.

What is the correct FCoE mode setting for Switch 1?

- A. NPV
- B. FCF
- C. disabled
- D. hybrid

Correct Answer: B

QUESTION 3

An administrator configures an HP Comware switch to support FCoE in Fibre Channel Forwarder (FCF) mode. A switch interface connects to a server Converged Network Adapter (CNA) which sends normal data and storage traffic. What is the correct configuration for this port?

- A. FC port in NP mode
- B. bound to a VFC interface, which is in F mode
- C. bound to a VFC interface, which is in E mode
- D. FC port in F mode

Correct Answer: A

**QUESTION 4**

Multiple data centers connect over an HP EVI network. IPv4 servers in the data centers use Microsoft network load-balancing and need to send multicasts to each other across EVI links.

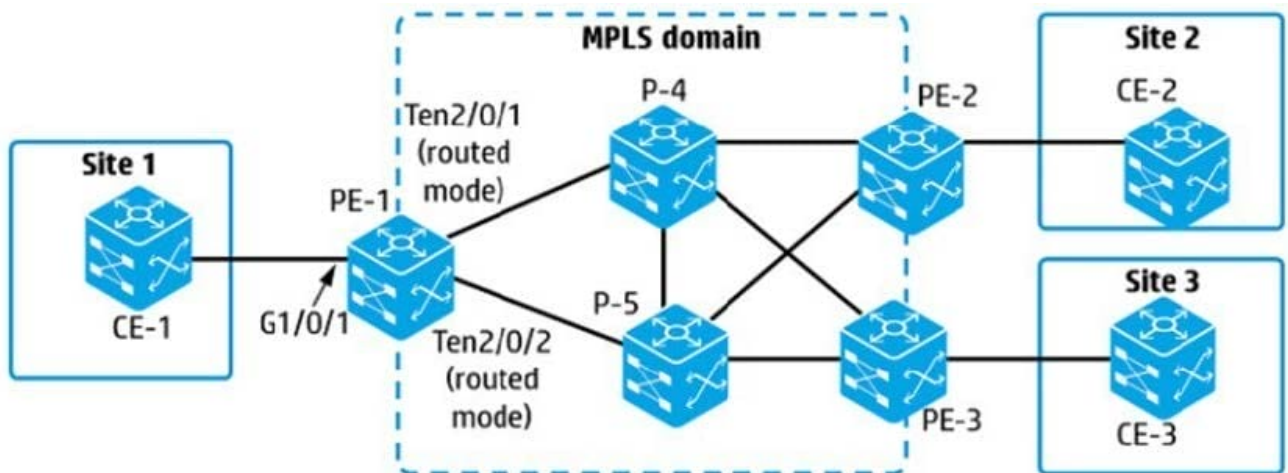
They do not use IGMP to join the multicast groups. What must the administrator do?

- A. Configure selective flooding for the multicast group addresses on the EVI tunnel interfaces
- B. Enable Protocol Independent Multicasting (PIM) on the EVI tunnel interfaces.
- C. Enable IGMP proxy on the EVI tunnel interfaces. I^
- D. Enable Multicast Learner Discovery (MLD) on the EVI tunnel interfaces.

Correct Answer: A

QUESTION 5

Refer to the exhibit



An administrator is setting up an MPLS Layer 2 VPN between customer Sites 1 and 2 and is defining the pseudo wire (PW) ID for this purpose. How should the PW IDs and router values be configured?

- A. Set the PW ID to a different value on PE-1 and PE-2 The value on each router must match the label advertised by the peer for its loopback address.
- B. Set the PW ID to a different value on PE-1 and PE-2 Also use a different value from other PWs on these routers.
- C. Set the PW ID to the same value on PE-1 and PE-2. Use a different value from other PWs on these routers.
- D. Set the PW ID to the same value on PE-1 and PE-2. The value on each router must match the S-VLAN ID for the associated service instance.

Correct Answer: D