



HP2-Z34^{Q&As}

Building HP FlexFabric Data Centers

Pass HP HP2-Z34 Exam with 100% Guarantee

Free Download Real Questions & Answers **PDF** and **VCE** file from:

<https://www.pass4itsure.com/hp2-z34.html>

100% Passing Guarantee
100% Money Back Assurance

Following Questions and Answers are all new published by HP Official Exam Center

- ⚙️ **Instant Download** After Purchase
- ⚙️ **100% Money Back** Guarantee
- ⚙️ **365 Days** Free Update
- ⚙️ **800,000+** Satisfied Customers



**QUESTION 1**

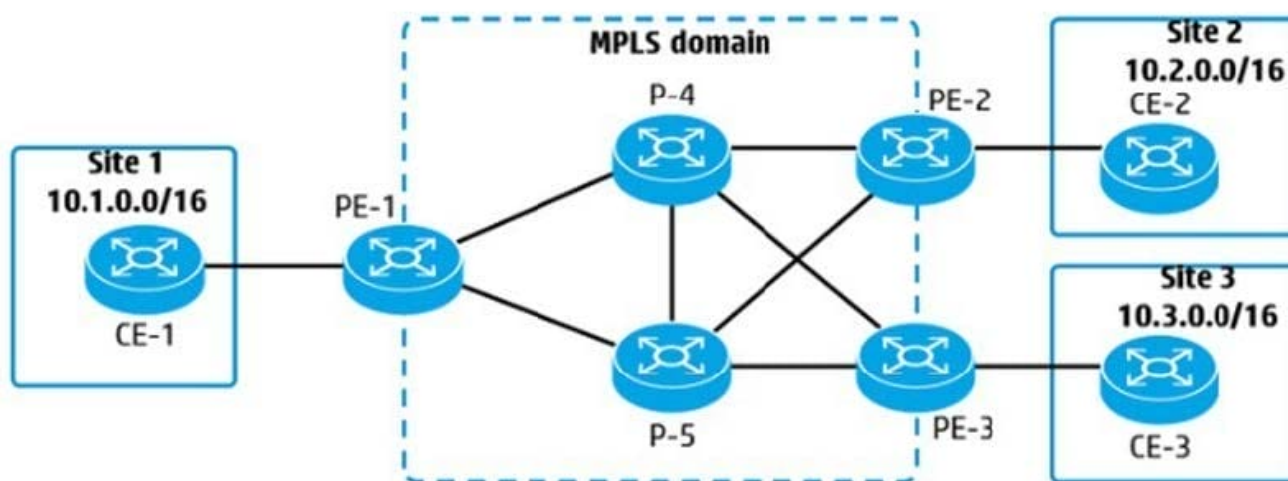
An HP IRF virtual switch with two members is implementing SPBM. The administrator wants to ensure that the master can fail without causing topology changes or changes in forwarding tables in the SPBM region. Which setting helps support this requirement?

- A. tandem replication for multicasts
- B. persistent MAC address for IRF
- C. Bidirectional Forwarding Detection (BFD) Multi-Active Detection (MAD) for the IRF link
- D. non-stop-forwarding for SPBM

Correct Answer: C

QUESTION 2

Refer to the exhibit



An administrator is planning an MPLS solution and wants to make sure that traffic from 10.1.0.0/16 to 10.2.0.0/16 takes the best path. The solution is not using Traffic Engineering (TE). How does PE-1 choose between the label advertised for 10.2.0.0/16 by P-4 and by P-5?

- A. based on which peer is the higher priority LDP peer
- B. based on which peer is the next hop in the best route in the IP routing table
- C. based on which link has the lower LDP cost
- D. based on which link has the lower MPLS cost

Correct Answer: B

**QUESTION 3**

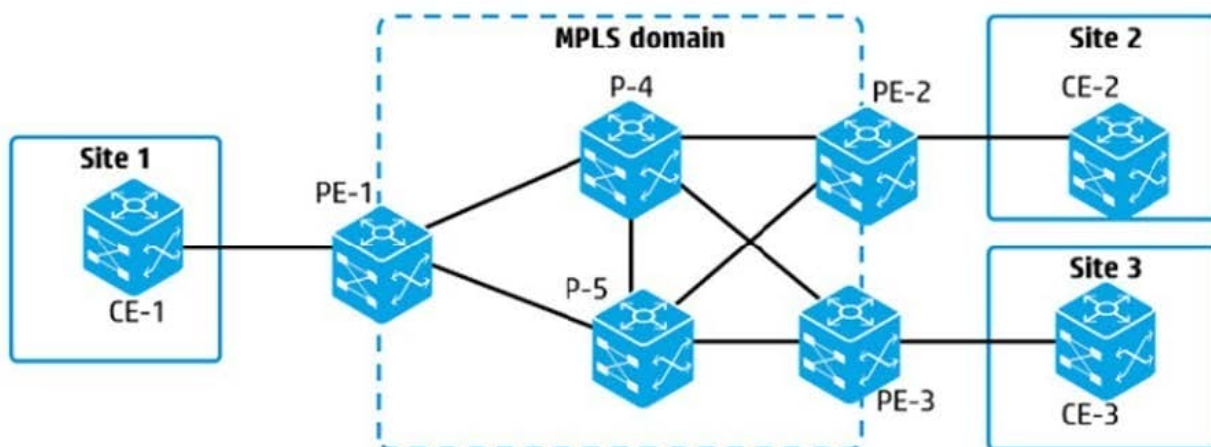
An HP Comware Switch 1 supports FCoE for connected servers with Converged Network Adapters (CNAs). On interface Ten 1/0/1 Switch 1 sends FCoE traffic in VSAN 2 to an upstream switch. Switch 2 which also supports FCoE. What is the correct configuration for interface Ten 1/0/71?

- A. FC trunk port, which permits VSAN 2
- B. bound to a VFC interface, which is a trunk port and permits VSAN 2
- C. bound to a VFC interface, which is an access port in VSAN 2
- D. FC access port in VSAN 2

Correct Answer: C

QUESTION 4

Refer to the exhibit



In the exhibit, the devices labeled PE and P:

use OSPF

have established an MPLS domain.

use LDP.

have established a Martini Layer 2 VPN between Sites 1 and 2

VPN traffic is using the link between PE-1 and P-4, and this link fails.

What happens to the VPN traffic?

- A. It is disrupted for this particular site-to-site connection until the link is fixed



- B. It fails over to the link between PE-1 and P-5 only //administrators created a backup virtual circuit (VC) from PE-1 to
- C. It fails over to the link between PE-1 and P-5 only if administrators created two virtual circuits (VCs) between PE-1
- D. and PE-2.
- E. It fails over to the link between PE-1 and P-5. The failover is automatically handled by MPLS. LDP, and OSPF

Correct Answer: A

QUESTION 5

Which statement is correct about a Fibre Channel (FC) World Wide Name (WWN)?

- A. It is a hardware specific address for a LUN on a storage disk and can be used to direct FC frames to targets.
- B. It is a hardware specific address for an FC device and can be used to place the device in zones.
- C. It is assigned to an FC device based on its location and can be used to deliver FC frames
- D. It is assigned to an FC N-port as its switch joins the fabric and can be used to route FC frames

Correct Answer: B

[Latest HP2-Z34 Dumps](#)

[HP2-Z34 VCE Dumps](#)

[HP2-Z34 Exam Questions](#)