



HP2-Z33^{Q&As}

HP Unified Wired-Wireless Networks and BYOD

Pass HP HP2-Z33 Exam with 100% Guarantee

Free Download Real Questions & Answers **PDF** and **VCE** file from:

<https://www.pass4itsure.com/hp2-z33.html>

100% Passing Guarantee
100% Money Back Assurance

Following Questions and Answers are all new published by HP Official Exam Center

- ⚙️ **Instant Download** After Purchase
- ⚙️ **100% Money Back** Guarantee
- ⚙️ **365 Days** Free Update
- ⚙️ **800,000+** Satisfied Customers





QUESTION 1

What is the purpose of Transparent MAC authentication?

- A. to allow endpoints associated with a valid account to register on the BYOD page
- B. to allow endpoints associated with the Default BYOD user to authenticate transparently
- C. to allow endpoints associated with a valid account to authenticate transparently
- D. to allow endpoints associated with a valid guest account to register on the BYOD page

Correct Answer: D

QUESTION 2

An employee wants to register an endpoint using wireless and the HP BYOD portal of a company with credentials of the corporate account. What is the correct order of steps to register the endpoint? (Place the steps in the correct order.)

Step 1	<input type="text"/>
Step 2	<input type="text"/>
Step 3	<input type="text"/>
Step 4	<input type="text"/>
Step 5	<input type="text"/>

Hot Area:



Step 1

Select the Wireless SSID of the company.	
Open the web browser.	
Display the web page for registration.	
Enter assigned corporate credentials.	
Access Internet web page.	

Step 2

Select the Wireless SSID of the company.	
Open the web browser.	
Display the web page for registration.	
Enter assigned corporate credentials.	
Access Internet web page.	

Step 3

Select the Wireless SSID of the company.	
Open the web browser.	
Display the web page for registration.	
Enter assigned corporate credentials.	
Access Internet web page.	

Step 4

Select the Wireless SSID of the company.	
Open the web browser.	
Display the web page for registration.	
Enter assigned corporate credentials.	
Access Internet web page.	

Step 5

Select the Wireless SSID of the company.	
Open the web browser.	
Display the web page for registration.	
Enter assigned corporate credentials.	
Access Internet web page.	

Correct Answer:



Step 1

Select the Wireless SSID of the company.	
Open the web browser.	
Display the web page for registration.	
Enter assigned corporate credentials.	
Access Internet web page.	

Step 2

Select the Wireless SSID of the company.	
Open the web browser.	
Display the web page for registration.	
Enter assigned corporate credentials.	
Access Internet web page.	

Step 3

Select the Wireless SSID of the company.	
Open the web browser.	
Display the web page for registration.	
Enter assigned corporate credentials.	
Access Internet web page.	

Step 4

Select the Wireless SSID of the company.	
Open the web browser.	
Display the web page for registration.	
Enter assigned corporate credentials.	
Access Internet web page.	

Step 5

Select the Wireless SSID of the company.	
Open the web browser.	
Display the web page for registration.	
Enter assigned corporate credentials.	
Access Internet web page.	

QUESTION 3

Which feature must be enabled globally on the VLAN of the wireless interface to enable multicast optimization?

A. Internet Group Management Protocol



B. Inter Access Controller Tunneling Protocol

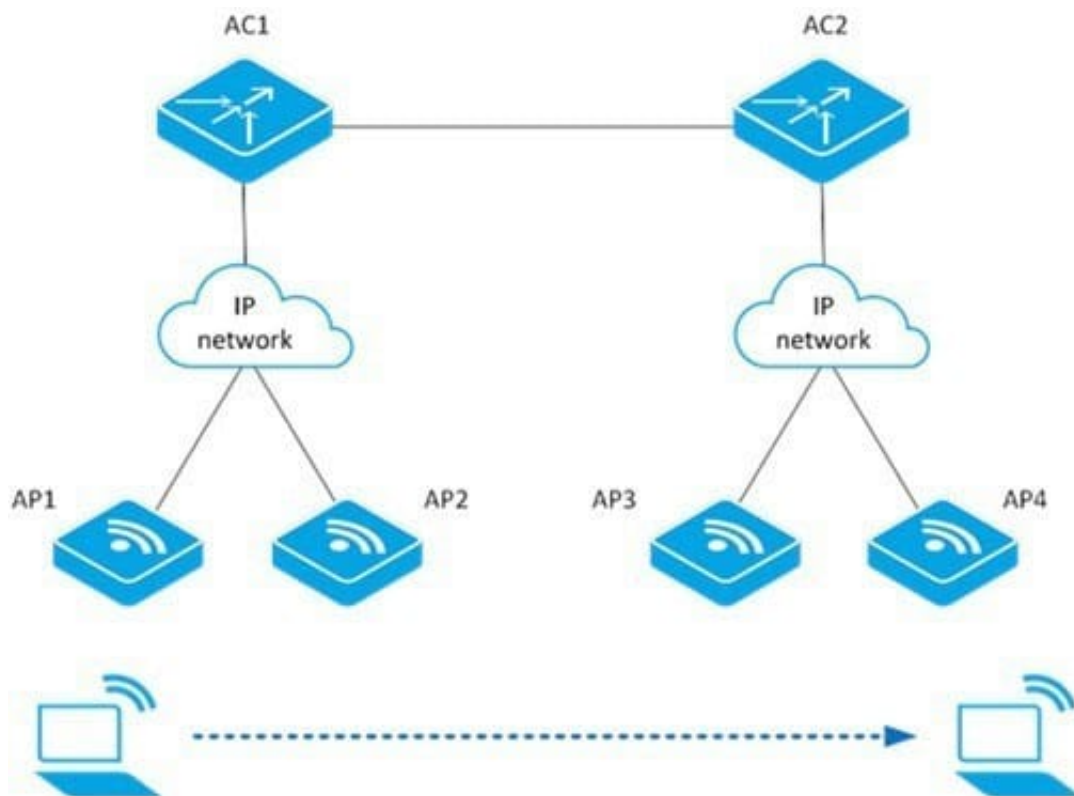
C. Simple Network Management Protocol

D. Lightweight Access Point Protocol

Correct Answer: A

QUESTION 4

Refer to the exhibit.



A client can roam successfully between AP1 and AP2. However, the client is unable to roam between AP2 and AP3. What could be the problem?

A. The client is not using RSN+802.1X authentication mode.

B. The AP2 and AP3 are not in the same mobility group.

C. The network is using IPv6.

D. The IACTP service has been disabled on AC1.

Correct Answer: D

QUESTION 5



A corporate user accesses a corporate network on SSID CORPORATE. The user endpoint is set up for 802.1X in PEAP-MSCHAPV2: HP BYOD is implemented.

Wireless is set up on an HP Unified Wired-Wireless Controller

Accounts have been synchronized with an Active Directory Domain controller.

A. Setup of RADIUS on the Wireless controller and User Access Manager. Certificate server installation. BYOD Portal setup

B. Setup of 802.1X Authentication on the wireless controller Installation of certificates in User Access Manager (UAM) Setup of RADIUS on the wireless controller and UAM

C. Setup of 802 1X Authentication on the wireless controller Setup of RADIUS on the wireless controller and User Access Manager Fingerprinting with the DHCP agent

D. Setup of 802 1X Authentication on the wireless controller Setup RADIUS on the wireless controller and User Access Manager Fingerprinting with the HTTP agent

Correct Answer: A

[HP2-Z33 PDF Dumps](#)

[HP2-Z33 Exam Questions](#)

[HP2-Z33 Braindumps](#)