



# HP2-Z33<sup>Q&As</sup>

HP Unified Wired-Wireless Networks and BYOD

## Pass HP HP2-Z33 Exam with 100% Guarantee

Free Download Real Questions & Answers **PDF** and **VCE** file from:

<https://www.pass4itsure.com/hp2-z33.html>

100% Passing Guarantee  
100% Money Back Assurance

Following Questions and Answers are all new published by HP Official Exam Center

- ⚙️ **Instant Download** After Purchase
- ⚙️ **100% Money Back** Guarantee
- ⚙️ **365 Days** Free Update
- ⚙️ **800,000+** Satisfied Customers





### QUESTION 1

When does DHCP fingerprinting of endpoints occur within an HP BYOD solution?

- A. when User Access Manager validates the user account
- B. when endpoints access the BYOD registration page
- C. when endpoints obtain an IP address
- D. when endpoints are authenticated

Correct Answer: C

---

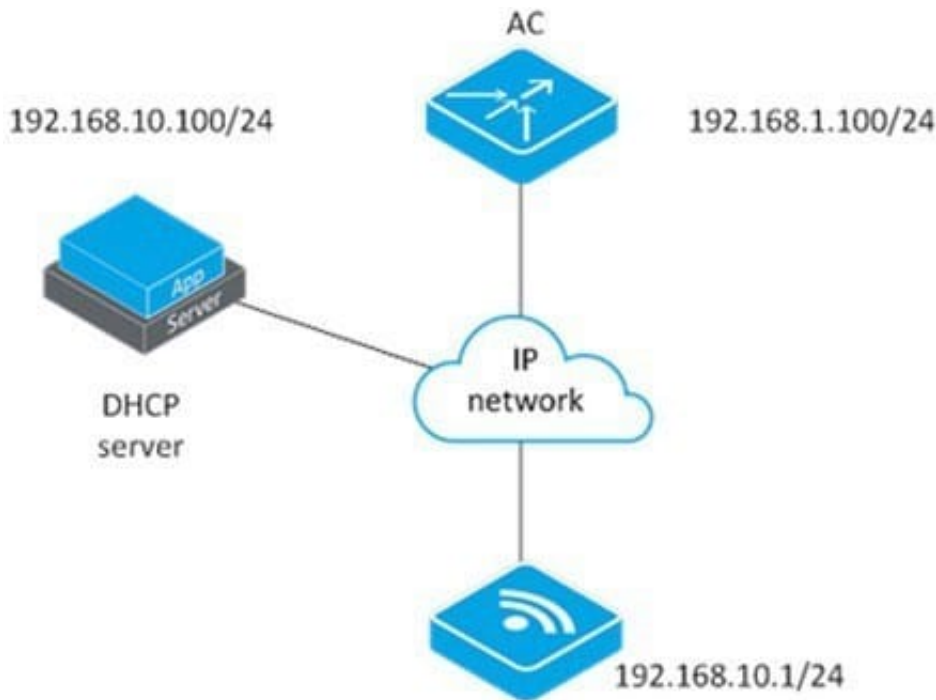
### QUESTION 2

An administrator wants to configure authentication on the HP 830 switch ports that connect to wireless access points. The company policy requires all wireless users to be authenticated using 802.1X authentication. Each port should also allow multiple wireless users to pass 802.1X authentication.

Which port security mode meets these requirements?

- A. macAddressWithRadius
- B. userLoginSecure
- C. userLoginSecureExt
- D. macAddressElseUserLoginSecureExt

Correct Answer: D



An engineer is installing a new access point (AP). The AP has successfully acquired an IP address. The engineer can ping the access controller (AC) from the AP. However the AC is not discovering the AP. What could cause this problem?

- A. The interface between the AC and the IP network is down.
- B. The AC and AP must be in the same subnetwork.
- C. The AP and AC are not in the same VLAN.
- D. The DHCP server has not been set up with option 43.

### QUESTION 3

In an HP BYOD solution, what does DHCP fingerprinting provide?

- A. endpoint information
- B. web browser type
- C. SSID of the connection
- D. user account information

Correct Answer: A

### QUESTION 4

Refer to the exhibit.



## Access Service

Wireless Service

service1

VLAN (Untagged)

1

( 1-4094, Example: 3-5,10 )

Default VLAN

1

\* ( 1-4094 )

Delete VLAN

( 1-4094, Example: 3-5,10 )

SSID Hide

Enable



What is the primary advantage of enabling SSID Hide?

- A. to connect to the access point without configuring clients
- B. to make it easier for the client to connect to the access point
- C. to prevent people from inadvertently connecting to the access point
- D. to improve security

Correct Answer: D

**QUESTION 5**

What are the process steps that occur for a guest to access a wireless network managed with an HP BYOD solution?  
(Place the steps in the correct order.)

Step 1:	<input type="text"/>
Step 2:	<input type="text"/>
Step 3:	<input type="text"/>
Step 4:	<input type="text"/>
Step 5:	<input type="text"/>

Hot Area:



Step 1:

Guest selects the Guest SSID that the organization provides.  
Guest opens the web browser or it opens automatically.  
Browser is automatically redirected to a web page for registration.  
Guest enters credentials.  
MAC address of guest endpoint is registered along with the guest account.

Step 2:

Guest selects the Guest SSID that the organization provides.  
Guest opens the web browser or it opens automatically.  
Browser is automatically redirected to a web page for registration.  
Guest enters credentials.  
MAC address of guest endpoint is registered along with the guest account.

Step 3:

Guest selects the Guest SSID that the organization provides.  
Guest opens the web browser or it opens automatically.  
Browser is automatically redirected to a web page for registration.  
Guest enters credentials.  
MAC address of guest endpoint is registered along with the guest account.

Step 4:

Guest selects the Guest SSID that the organization provides.  
Guest opens the web browser or it opens automatically.  
Browser is automatically redirected to a web page for registration.  
Guest enters credentials.  
MAC address of guest endpoint is registered along with the guest account.

Step 5:

Guest selects the Guest SSID that the organization provides.  
Guest opens the web browser or it opens automatically.  
Browser is automatically redirected to a web page for registration.  
Guest enters credentials.  
MAC address of guest endpoint is registered along with the guest account.

Correct Answer:





Step 1:

Guest selects the Guest SSID that the organization provides.  
Guest opens the web browser or it opens automatically.  
Browser is automatically redirected to a web page for registration.  
Guest enters credentials.  
MAC address of guest endpoint is registered along with the guest account.

Step 2:

Guest selects the Guest SSID that the organization provides.  
Guest opens the web browser or it opens automatically.  
Browser is automatically redirected to a web page for registration.  
Guest enters credentials.  
MAC address of guest endpoint is registered along with the guest account.

Step 3:

Guest selects the Guest SSID that the organization provides.  
Guest opens the web browser or it opens automatically.  
Browser is automatically redirected to a web page for registration.  
Guest enters credentials.  
MAC address of guest endpoint is registered along with the guest account.

Step 4:

Guest selects the Guest SSID that the organization provides.  
Guest opens the web browser or it opens automatically.  
Browser is automatically redirected to a web page for registration.  
Guest enters credentials.  
MAC address of guest endpoint is registered along with the guest account.

Step 5:

Guest selects the Guest SSID that the organization provides.  
Guest opens the web browser or it opens automatically.  
Browser is automatically redirected to a web page for registration.  
Guest enters credentials.  
MAC address of guest endpoint is registered along with the guest account.

[HP2-Z33 VCE Dumps](#)[HP2-Z33 Practice Test](#)[HP2-Z33 Study Guide](#)