



HP0-Y51^{Q&As}

Building HP SDN and FlexNetwork Solutions

Pass HP HP0-Y51 Exam with 100% Guarantee

Free Download Real Questions & Answers **PDF** and **VCE** file from:

<https://www.pass4itsure.com/hp0-y51.html>

100% Passing Guarantee
100% Money Back Assurance

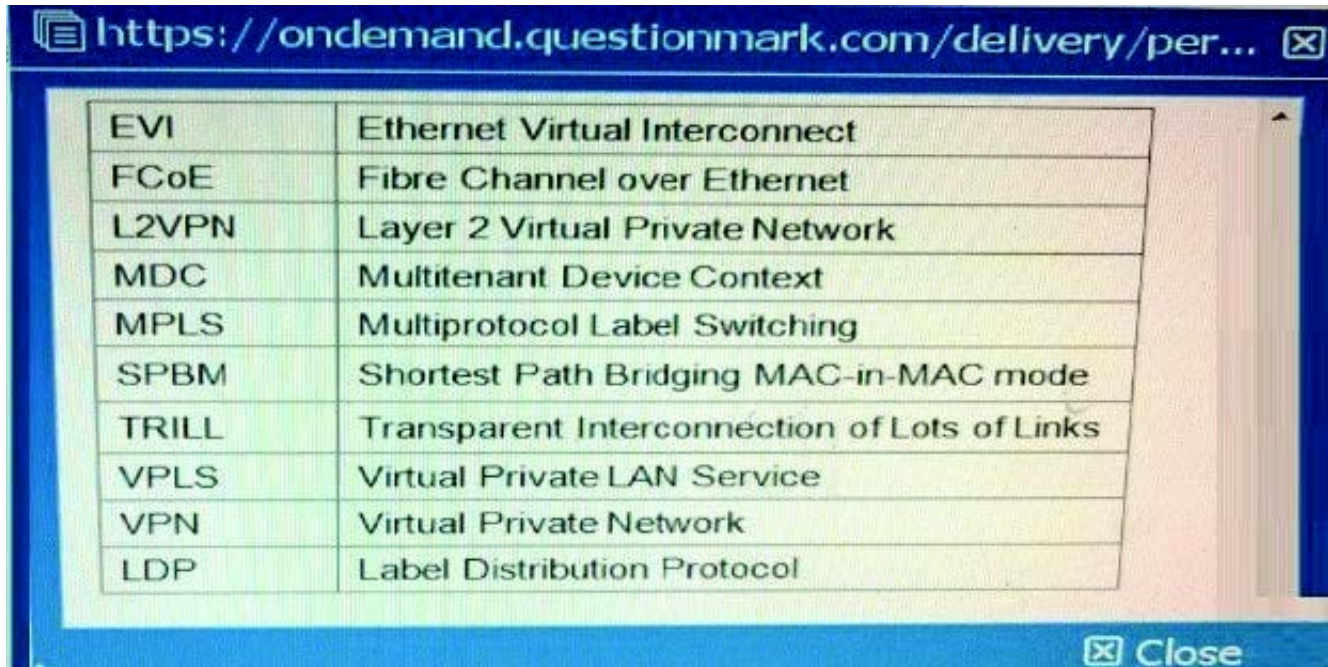
Following Questions and Answers are all new published by HP Official Exam Center

- ⚙️ **Instant Download** After Purchase
- ⚙️ **100% Money Back** Guarantee
- ⚙️ **365 Days** Free Update
- ⚙️ **800,000+** Satisfied Customers



**QUESTION 1**

Table of Acronyms



EVI	Ethernet Virtual Interconnect
FCoE	Fibre Channel over Ethernet
L2VPN	Layer 2 Virtual Private Network
MDC	Multitenant Device Context
MPLS	Multiprotocol Label Switching
SPBM	Shortest Path Bridging MAC-in-MAC mode
TRILL	Transparent Interconnection of Lots of Links
VPLS	Virtual Private LAN Service
VPN	Virtual Private Network
LDP	Label Distribution Protocol

Refer to the exhibit.



```
<Router1> display ip routing-table vpn-instance SharedServices
Routing Tables: SharedServices
Destinations : 6          Routes : 6
```

Destination/Mask	Proto	Pre	Cost	NextHop	Interface
10.0.1.1/32	Direct	0	0	127.0.0.1	InLoop0
10.0.1.0/30	Direct	0	0	10.0.0.2	RAGG 3
10.0.5.0/24	OSPF	10	20	10.0.1.2	RAGG 3
10.255.0.1/32	Direct	0	0	127.0.0.1	InLoop0
10.255.0.2/32	OSPF	10	10	10.0.0.2	RAGG 1
127.0.0.0/8	Direct	0	0	127.0.0.1	InLoop0
127.0.0.1/32	Direct	0	0	127.0.0.1	InLoop0

```
<Router1> display ip routing-table vpn-instance TenantA
Routing Tables: TenantA
Destinations : 8          Routes : 8
```

Destination/Mask	Proto	Pre	Cost	NextHop	Interface
10.1.1.1/32	Direct	0	0	127.0.0.1	InLoop0
10.1.1.0/30	Direct	0	0	10.1.1.1	RAGG 10
10.1.10.0/24	OSPF	10	20	10.1.1.2	RAGG 10
10.1.20.0/24	OSPF	10	20	10.1.1.2	RAGG 10
10.255.1.1/32	Direct	0	0	127.0.0.1	InLoop0
10.255.1.2/32	OSPF	10	10	10.0.0.2	RAGG 10
127.0.0.0/8	Direct	0	0	127.0.0.1	InLoop0
127.0.0.1/32	Direct	0	0	127.0.0.1	InLoop0

```
<Router1> display ip routing-table vpn-instance TenantB
Routing Tables: TenantA
Destinations : 8          Routes : 8
```

Destination/Mask	Proto	Pre	Cost	NextHop	Interface
10.2.1.1/32	Direct	0	0	127.0.0.1	InLoop0
10.2.1.0/30	Direct	0	0	10.2.1.1	RAGG 11
10.1.10.0/24	OSPF	10	20	10.2.1.2	RAGG 11
10.1.11.0/24	OSPF	10	20	10.2.1.2	RAGG 11
10.255.2.1/32	Direct	0	0	127.0.0.1	InLoop0
10.255.2.2/32	OSPF	10	10	10.0.0.2	RAGG 11
127.0.0.0/8	Direct	0	0	127.0.0.1	InLoop0
127.0.0.1/32	Direct	0	0	127.0.0.1	InLoop0

An administrator wants to route all external traffic from VPN instances "TenantA" and "TenantB" to a firewall at 10.0.5.5 instance "SharedServices". In addition to setting up the routes between the instances, what is another requirement for this scenario?

- A. A router must implement Network Address Translation (NAT) to translate overlapping tenant network addresses.
- B. Route leaking must be enabled globally on Router1, as well as on each of the VPN instances.
- C. The RAGG 3 interface must be added to VPN instances "TenantA" and "TenantB".
- D. Route leaking must be enabled globally on Router1.

Correct Answer: C

QUESTION 2

Table of acronyms

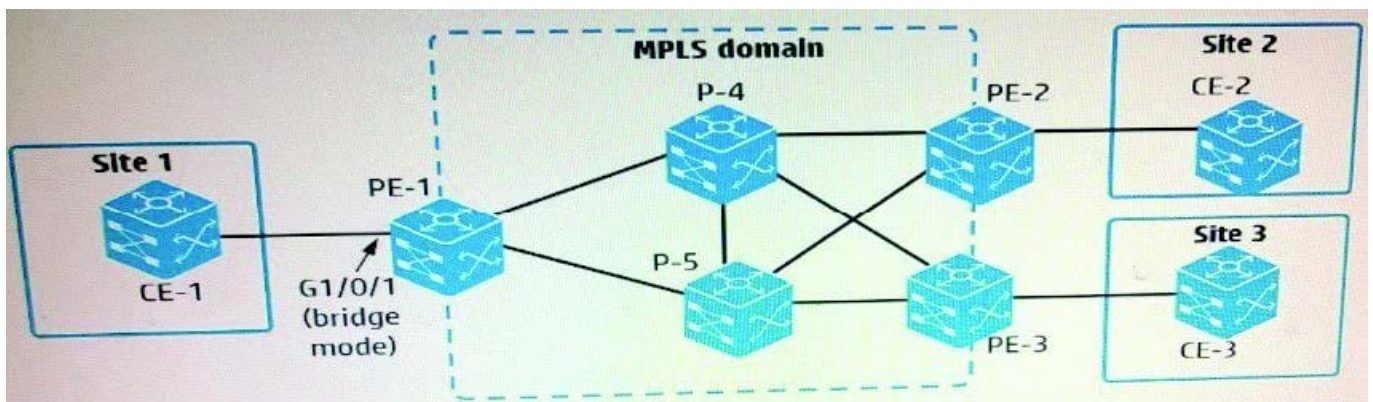


<https://ondemand.questionmark.com/delivery/pe...> [X]

EVI	Ethernet Virtual Interconnect
FCoE	Fibre Channel over Ethernet
L2VPN	Layer 2 Virtual Private Network
MDC	Multitenant Device Context
MPLS	Multiprotocol Label Switching
SPBM	Shortest Path Bridging MAC-in-MAC mode
TRILL	Transparent Interconnection of Lots of Links
VPLS	Virtual Private LAN Service
VPN	Virtual Private Network
LDP	Label Distribution Protocol

[X] Close

Refer to the exhibit.



An administrator is setting up an MPLS and L2VPN virtual circuit (VC) between customer Site 1 and Site 2. The administrator is creating a global cross-connect group, which uses LDP signaling, on PE-1. Which two elements are required to do this?

- A. An AC connection (specifies a service instance on g1/0/1) and a peer (PE-2)
- B. A peer (PE-2) and a VPN instance (associated with g1/0/1)
- C. A peer (PE-2) and a VLAN ID (access VLAN or. g1/0/1)
- D. An AC connection (specifies a service instance on g1/0/1) and a VPN instance (associated with g1/0/1)

Correct Answer: CD

QUESTION 3

An administrator sets up an OpenFlow instance on an HP Provision switch in passive mode. What does this mean?

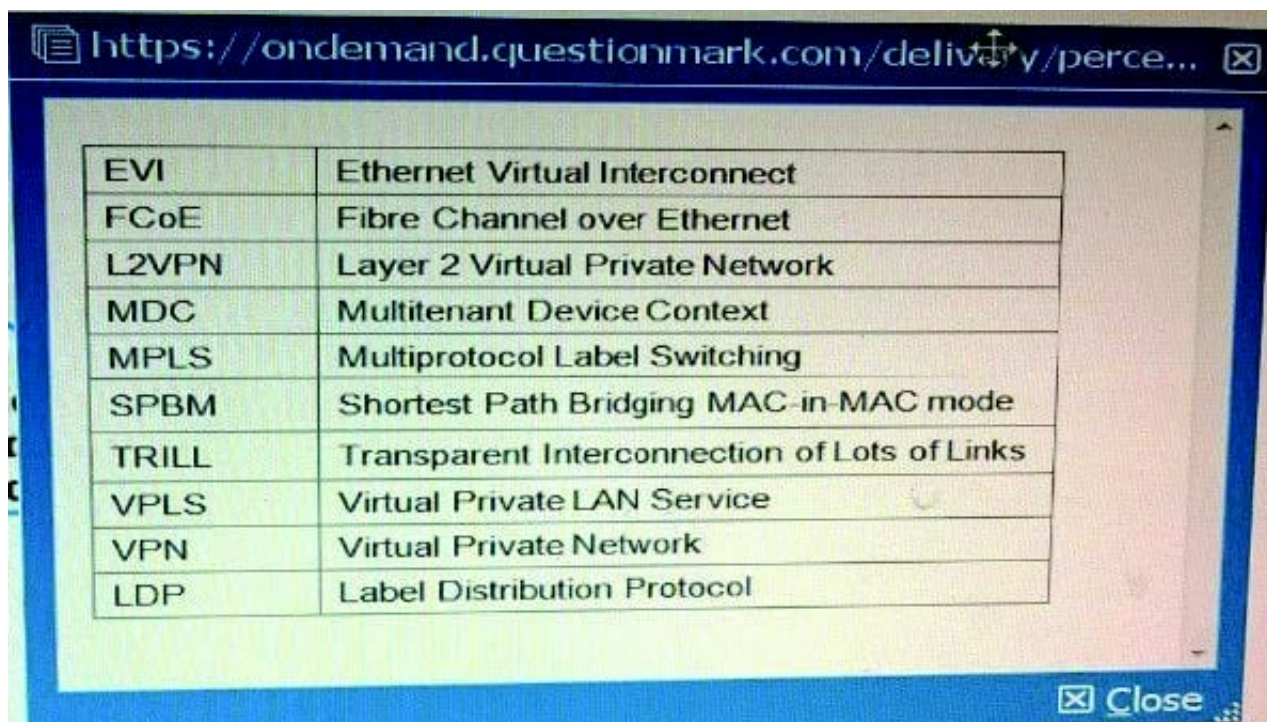


- A. The switch first attempts to switch or route traffic using its own MAC forwarding and routing tables. If it does not know how to treat the traffic, it uses the OpenFlow table.
- B. The switch does not associate this OpenFlow instance with a specific VLAN. Instead, VLANs that are not assigned to another OpenFlow instance are associated with this instance.
- C. The switch matches all traffic in the instance against an OpenFlow table, but, if it finds no match, it forwards the traffic normally.
- D. The switch does not forward any traffic in the instance locally. Instead, it encapsulates all traffic in OpenFlow Packet_Out messages to the controller.

Correct Answer: B

QUESTION 4

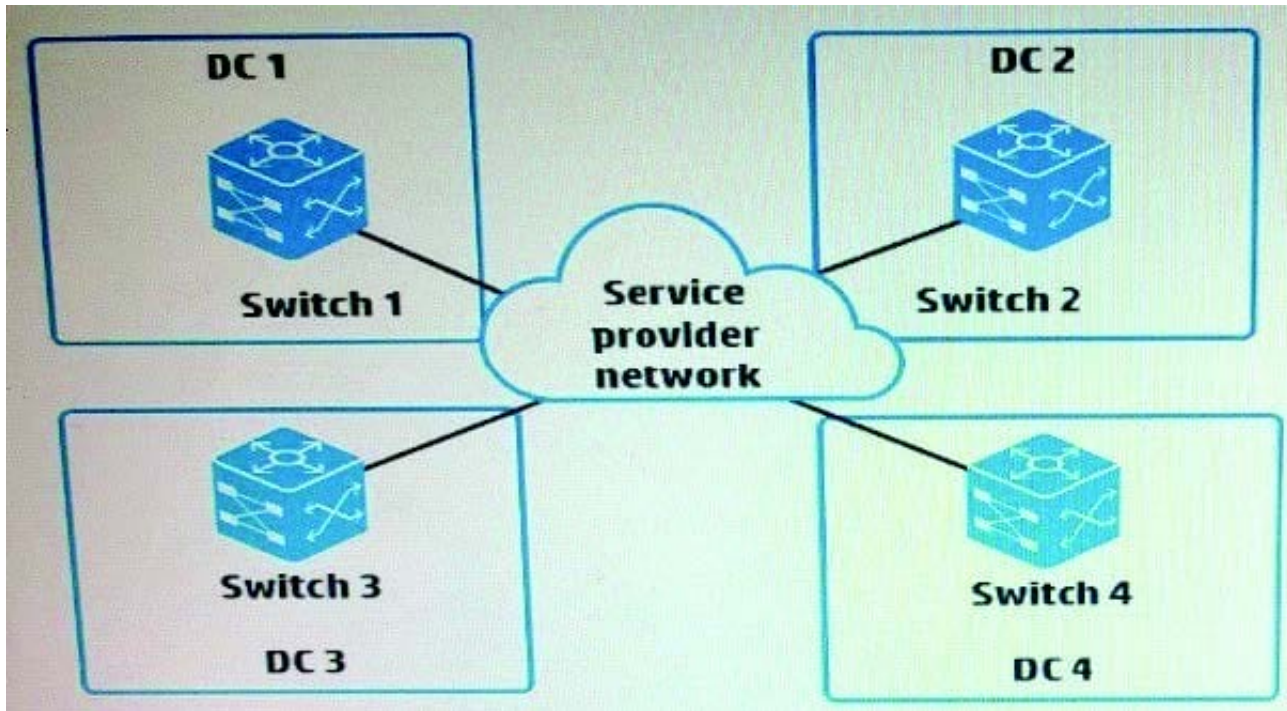
Table of Acronyms



The screenshot shows a web browser window with the URL <https://ondemand.questionmark.com/delivery/perce...>. The main content is a table with two columns: the acronym and its full name. The table lists ten network-related acronyms. At the bottom right of the table, there is a 'Close' button.

EVI	Ethernet Virtual Interconnect
FCoE	Fibre Channel over Ethernet
L2VPN	Layer 2 Virtual Private Network
MDC	Multitenant Device Context
MPLS	Multiprotocol Label Switching
SPBM	Shortest Path Bridging MAC-in-MAC mode
TRILL	Transparent Interconnection of Lots of Links
VPLS	Virtual Private LAN Service
VPN	Virtual Private Network
LDP	Label Distribution Protocol

Refer to the exhibit



An administrator wants to connect four data centers using HP EVI. What is the correct setup for the EVI tunnel interfaces?

- A. Three EVI tunnel interfaces on each EVI edge device-one EVI tunnel interface is required for each GRE tunnel in the mesh
- B. One EVI tunnel interface on Switch 1, which will be configured as the ENDP server, and no interfaces on the other switches
- C. Three EVI tunnel interfaces on Switch 1, which will act as the hub, and one EVI tunnel interface each on the other switches
- D. One EVI tunnel interface on each EVI edge device--the devices automatically establish GRE tunnels between these interfaces

Correct Answer: C

QUESTION 5

Which OpenFlow use case is an example of Network Functions Virtualization (NFV)?

- A. Use OpenFlow to deploy configurations using IMC VAN SDN Manager.
- B. Use OpenFlow to implement a router on an open-vswitch.
- C. Use OpenFlow to replace the need of an snmp-agent on the switch.
- D. Use OpenFlow to implement traffic prioritization on the edge.



Correct Answer: C

[Latest HP0-Y51 Dumps](#)

[HP0-Y51 VCE Dumps](#)

[HP0-Y51 Braindumps](#)