



H31-161^{Q&As}

HCIE-Carrier IP (Written) V2.0

Pass Huawei H31-161 Exam with 100% Guarantee

Free Download Real Questions & Answers **PDF** and **VCE** file from:

<https://www.pass4itsure.com/h31-161.html>

100% Passing Guarantee
100% Money Back Assurance

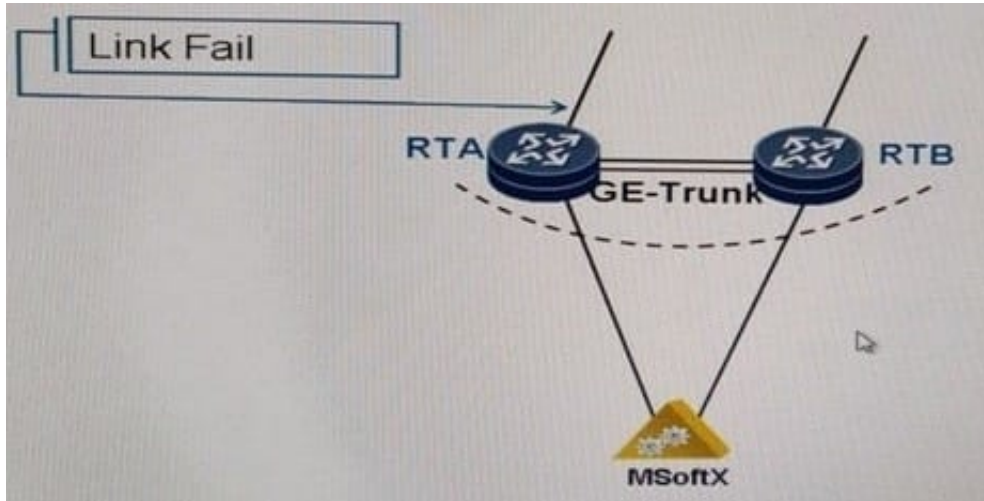
Following Questions and Answers are all new published by Huawei
Official Exam Center

-  **Instant Download** After Purchase
-  **100% Money Back** Guarantee
-  **365 Days** Free Update
-  **800,000+** Satisfied Customers



**QUESTION 1**

Exhibit.



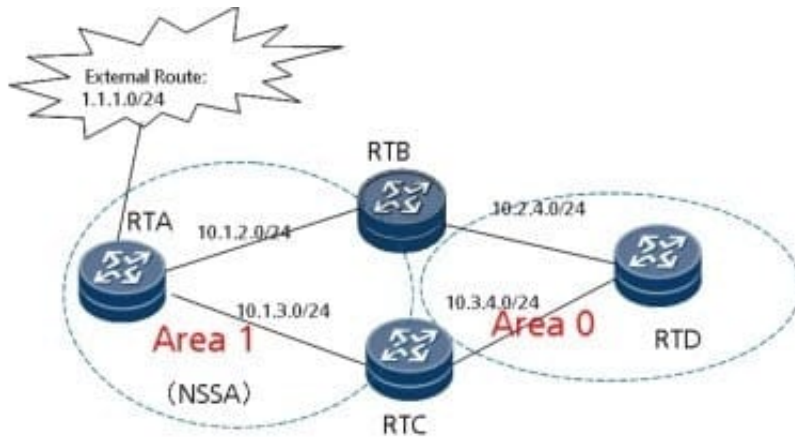
The figure shows the typically mode in which a common softswitch access the bearer network. VRRP is enabled on RTA and RTB. In normal cases, RTA is the VRRP master router and RTB is the VRRP slave router. The ETH_trunk is enabled between RTA RTB. If VRRP is not bounded to BFD and each [parameter uses their default settings, which statement is the true when the upstream link of RTA is faulty?

- A. RTB cannot receive the heartbeat packet from RTA, and both routers become master routers.
- B. The VRRP status remain unchanged but the downstream traffic is directly forwarded from RTB to the MSOFTX.
- C. The VRRP status remain unchanged but the downstream traffic is forwarded from RTB to the MSOFT through RTA
- D. The VRRP status immediately between RTA and RTB and RTB, and RTB becomes the master router.

Correct Answer: C

QUESTION 2

Refer to the exhibit.



As shown in the figure, RT 5 is a stub area router, an external Internet route is imported by RT 1, and a virtual connection is established between RT 1 and RT 3. At present, the Internet is accessible to routers except RT 5. Why can the Internet not be accessed from RT 5? (Select two answers)

- A. Category 5 LSAs cannot be sent in a stub area.
- B. A stub area cannot be connected using a virtual link.
- C. The cost of the link between RT 1 and RT 3 is excessively large.
- D. RT1 does not inform RT 5 that category 3 LSAs are configured by default.

Correct Answer: CD

QUESTION 3

In MPLS QoS, traffic policies are developed based on simple traffic classification and complex traffic classification. In traffic policies based on simple traffic classification, the service class, color, and drop priority of packets are reset based on the tags in packets. In traffic policies based on complex traffic classification, measures such as traffic policing, priority re-marking, packet filtering, policybased routing, and traffic sampling are implemented based on the traffic type. Generally, simple traffic classification is applied on border routers in DiffServ domains, and complex traffic classification core routers. QoS traffic policies are configured by performing the following operations:

1.
Defines DiffServ domains and configuring a traffic policy.
2.
Classifies traffic.
3.
Defines traffic behaviors and configures characteristics of behaviors.
4.
Defines a traffic policy and specifies actions for traffic categories.
- 5.



Applies the traffic policy.

6.

Configures L-LSP.

7.

Configures reverse address check.

8.

Adds interfaces to the DiffServ domains.

Which of the preceding operations are required when you configure simple traffic classification?

A. 1 6 8

B. 2 4 5 7

C. 1 5 6

D. 2 3 4 8

Correct Answer: A

QUESTION 4

RTA is a leaf router that directly connects to host A through interface GigabitEthernet 1/0/0. The interface is configured as follows: interface GigabitEthernet1/0/0 undo shutdown ip address 192.168.4.2 255.255.255.0 pim sm igmp enable igmp version 3 igmp ssm-mapping enable igmp static-group 232.1.1.1 Configurations in the IGMP view are as follows: igmp ssm-mapping 232.1.1.0 255.255.255.0 10.10.1.1

```
ssm-mapping 232.1.2.0 255.255.255.0 10.10.1.1
```

Host A sends an IGMPv2 Report message to group 232.1.2.2. Which entry can be displayed by the display igmp ssm-mapping group command?

A. (10.10.1.1, 232.1.1.1)

B. (10.10.1.1, 232.1.2.2)

C. (10.10.1.1, 232.1.1.1) and (10.10.1.1, 232.1.2.2)

D. No entry

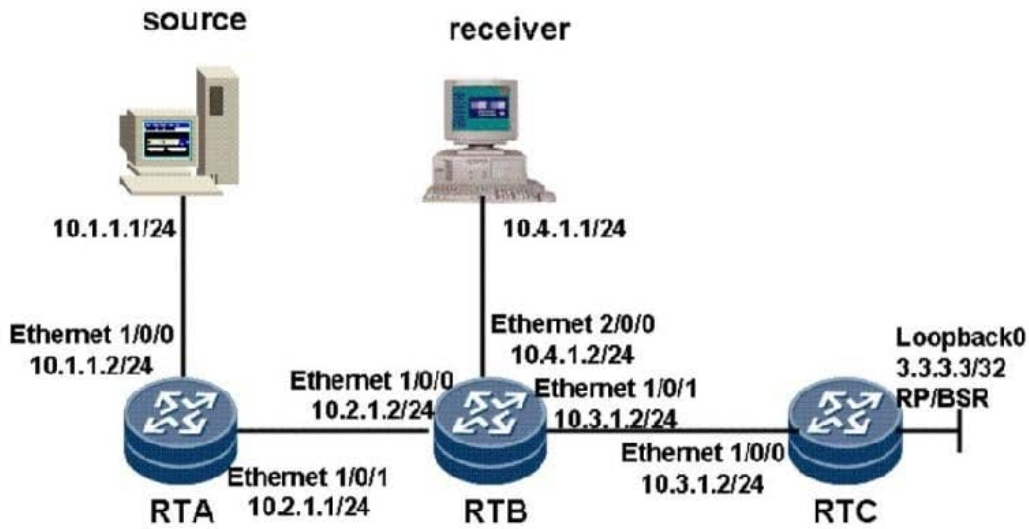
Correct Answer: C

QUESTION 5

As shown in the figure, RTA, RTB, and RTC use the OSPF protocol. The default cost value is used for links, and unicast routes converge on the entire network. The Loopback 0 interface is set to configure RTC as the RP or BSR. The SPT switching threshold uses the default value on RTB. The receiver joins the multicast group 225.1.1.1. The multicast



source sends multicast data to the destination address 225.1.1.1. Which interface is the inbound interface in the (10.1.1.1, 225.1.1.1) entry on RTB?



- A. Ethernet 1/0/0
- B. Ethernet 1/0/1
- C. Ethernet 2/0/0
- D. Null

Correct Answer: A

[Latest H31-161 Dumps](#)

[H31-161 VCE Dumps](#)

[H31-161 Brindumps](#)