



# H12-321<sup>Q&As</sup>

HCIP-WLAN-CEWA V1.0

## Pass Huawei H12-321 Exam with 100% Guarantee

Free Download Real Questions & Answers **PDF** and **VCE** file from:

<https://www.pass4itsure.com/h12-321.html>

100% Passing Guarantee  
100% Money Back Assurance

Following Questions and Answers are all new published by Huawei  
Official Exam Center

-  **Instant Download** After Purchase
-  **100% Money Back** Guarantee
-  **365 Days** Free Update
-  **800,000+** Satisfied Customers



**QUESTION 1**

CAC is implemented in three modes. Which of the following statements about CAC implementation based on channel usage is FALSE?

- A. When receiving a new access request, an AP calculates the current channel usage and checks whether the channel usage reaches the threshold. If not, the AP allows the user to go online.
- B. If the channel usage reaches the threshold after a new user goes online, an AP will reject access requests of new users, send alarms, but cannot hide its SSID.
- C. When a roaming user attempts to access an AP, the AP checks whether the channel usage reaches the CAC roaming threshold. If so, the AP will reject the access request of the roaming user and send alarms.
- D. An AP periodically detects the channel usage of a radio. Once the channel usage falls below the threshold, the AP sends a clear alarm, allowing new users to go online.

Correct Answer: B

---

**QUESTION 2**

When the VRRP hot backup is configured, the active and standby ACs can be hot standby through Layer 3 interworking on two different Layer 2 networks.

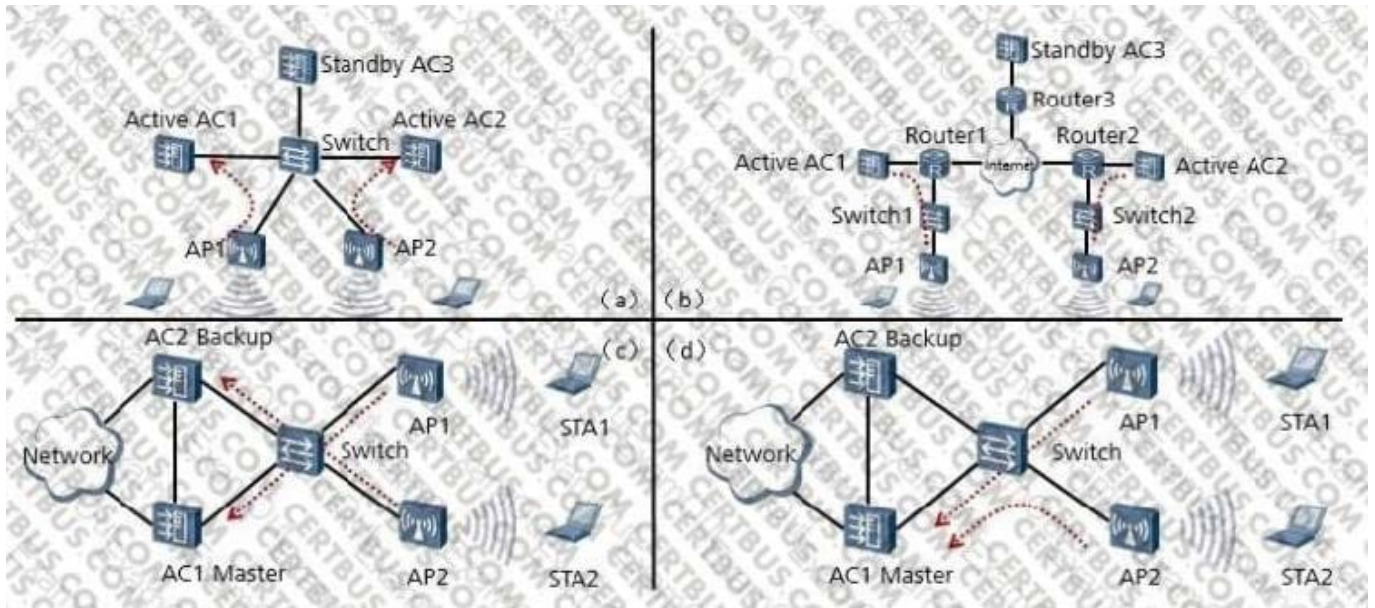
- A. Correct
- B. False

Correct Answer: B

---

**QUESTION 3**

Which figure shows the load balancing mode provided by the HSB solution?



- A. (a)
- B. (b)
- C. (c)
- D. (d)

Correct Answer: C

**QUESTION 4**

Regarding the parameter DN in the directory server, is the following description correct?

- A. Each directory server has a DN parameter
- B. The DN parameter is only available in the LDAP server.
- C. DN is a parameter that needs to be manually configured by the directory server administrator.
- D. The DN parameter is only available in the AD server.

Correct Answer: A

**QUESTION 5**

For a small-scale enterprise, which of the following WIDS/WIPS functions is recommended for WLAN security guarantee?

- A. Rogue device detection
- B. Rogue device countermeasure



C. WIDS attack detection

D. Blacklist and whitelist

Correct Answer: D

[H12-321 VCE Dumps](#)

[H12-321 Practice Test](#)

[H12-321 Braindumps](#)