



FM0-305^{Q&As}

Developer Essentials for FileMaker 11

Pass FileMaker FM0-305 Exam with 100% Guarantee

Free Download Real Questions & Answers **PDF** and **VCE** file from:

<https://www.pass4itsure.com/fm0-305.html>

100% Passing Guarantee
100% Money Back Assurance

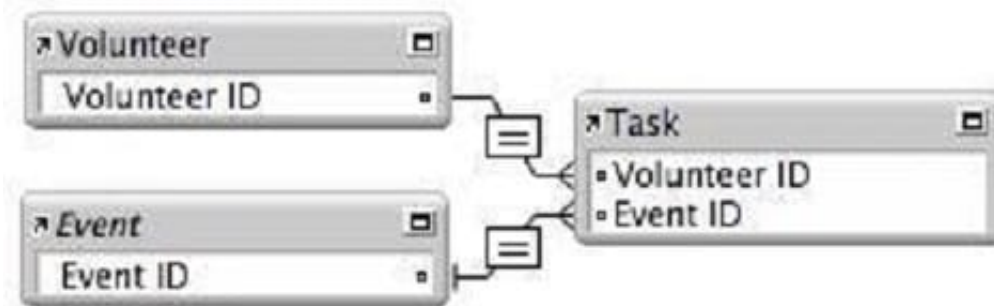
Following Questions and Answers are all new published by FileMaker
Official Exam Center

- ⚙️ **Instant Download** After Purchase
- ⚙️ **100% Money Back** Guarantee
- ⚙️ **365 Days** Free Update
- ⚙️ **800,000+** Satisfied Customers



**QUESTION 1**

Given the following relationship graph: Without inspecting the data, what is known about this database?



- A. There are no records in the Event table at this time.
- B. The Event table occurrence references a table from an external ODBC data source.
- C. There can be zero or one, but no more than one, Event record related to any Task record.
- D. The corner arrows indicate all three table occurrences reference tables from external data sources.
- E. From a layout based on the Event table occurrence, a portal could be drawn showing both related Task and Volunteer data.

Correct Answer: E

QUESTION 2

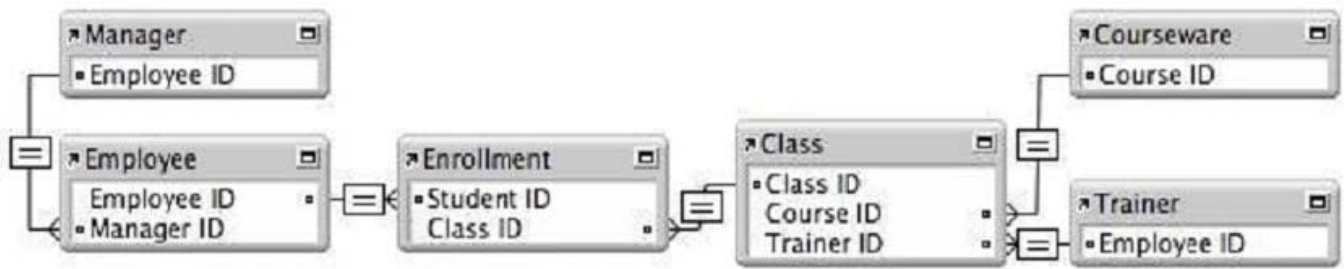
Given the following function: Position ("Bobby Bubbles" "B" 2 2) What is returned?

- A. 0
- B. 3
- C. 4
- D. 7

Correct Answer: C

QUESTION 3

Given the following Relationships Graph for a FileMaker 11 database, where Employee, Manager, and Trainer are all table occurrences sharing the same source table:



Assuming the relevant fields also exist in these tables, which two sets of data can be shown in portals without modifying the graph? (Choose two.)

- A. a portal of trainers that have taught their own manager
- B. a portal of students that have not enrolled in a class
- C. a portal showing a nonrepeating list of courseware titles taught by a trainer
- D. a portal of the classes that have been attended by a trainer's direct reports
- E. a portal of classes in which a manager enrolled with one or more of the manager's direct reports

Correct Answer: CD

QUESTION 4

According to the FileMaker Server Configuration Guide, which two are considered best practices for backing up databases hosted by FileMaker Server? (Choose two.)

- A. use the Server Admin Console Schedule Assistant or fmsadmin tool to perform backups
- B. include the option to Verify backup integrity in backups performed during offpeak hours
- C. use enterprise-class backup software to do a full system backup of the FileMaker Server at least once a week
- D. configure backup schedules to direct the backup of hosted databases directly to another computer or storage device
- E. use enterprise-class backup software to do an incremental system backup of the FileMaker Server at least once a day

Correct Answer: AB

QUESTION 5

For server-hosted databases, FileMaker Server 11 Advanced is required for which three operations? (Choose three.)

- A. importing ODBC data
- B. acting as an ODBC data source
- C. sharing via Custom Web Publishing



D. sharing via Instant Web Publishing

E. accessing External SQL data sources

F. sharing to more than 250 simultaneous FileMaker Pro users

Correct Answer: BDF

[FM0-305 PDF Dumps](#)

[FM0-305 Study Guide](#)

[FM0-305 Exam Questions](#)