



EX0-113^{Q&As}

TMap Next Foundation

Pass EXIN EX0-113 Exam with 100% Guarantee

Free Download Real Questions & Answers **PDF** and **VCE** file from:

<https://www.pass4itsure.com/ex0-113.html>

100% Passing Guarantee
100% Money Back Assurance

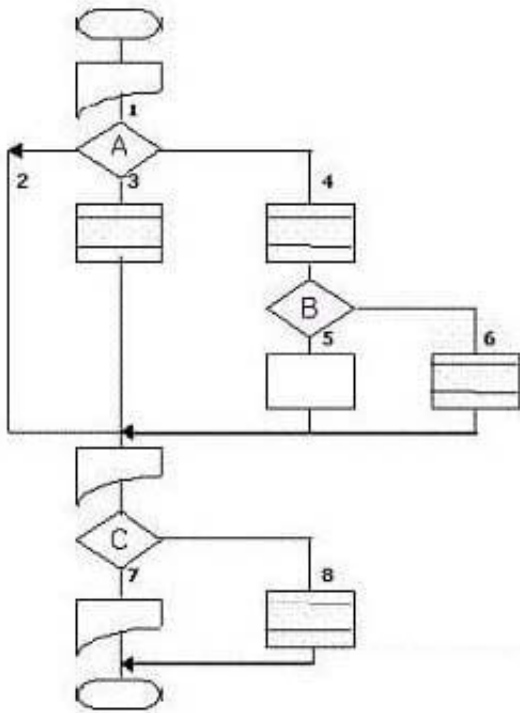
Following Questions and Answers are all new published by EXIN
Official Exam Center

- ⚙ **Instant Download** After Purchase
- ⚙ **100% Money Back** Guarantee
- ⚙ **365 Days** Free Update
- ⚙ **800,000+** Satisfied Customers



**QUESTION 1**

See the procedure flow below:



How many test situations are produced when the coverage type paths with test depth level 2 is used?

- A. 3
- B. 8
- C. 12
- D. 13

Correct Answer: D

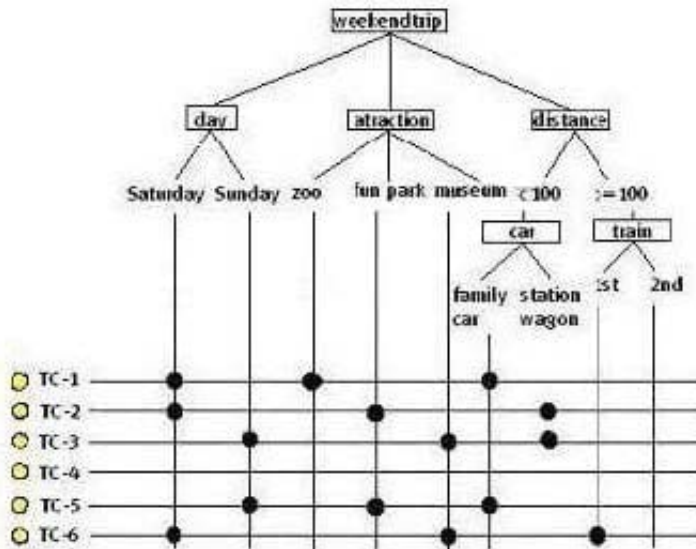
QUESTION 2

See the illustration below:

In order to test a registration application for a weekend trip, logical test cases must be created according to the Data Combination Test. It is agreed to conduct light testing. One data pair is defined that must be fully tested in combination:

-day ?attraction

Using a classification tree, six test cases are designed.



Where should the 'bullets' for test case 4 be placed?

- A. Saturday, zoo, 2nd
- B. Sunday, zoo, family car
- C. Sunday, zoo, 2nd

Correct Answer: C

QUESTION 3

See the specification below:

A specification includes the parameters A, B and C.

A and B each have 3 equivalence classes and C has 2.

What is the minimum number of test situations that will be generated by applying the coverage type pairwise testing?

- A. 3
- B. 6
- C. 9
- D. 18

Correct Answer: C

QUESTION 4

See the specification below in which a decision point is described:



$R = (D \text{ OR } E) \text{ AND } F$

Use of the coverage type decision points modified condition/decision coverage produces the following table with test situations:

$R = (D \text{ OR } E) \text{ AND } F$	1	0
D	101	001
E		001
F	101	100

Which values are missing where the dots are stated (? to make the table complete?

- A. 010
- B. 011
- C. 110
- D. 111

Correct Answer: B

QUESTION 5

Which of the following may be a consequence of not performing a pretest?

- A. A degradation in quality of the test basis.
- B. An increase in the number of test cases.
- C. Loss of time during the test execution.
- D. Increased risk of damage during production.

Correct Answer: C

[EX0-113 PDF Dumps](#)

[EX0-113 VCE Dumps](#)

[EX0-113 Practice Test](#)