



# EX0-113<sup>Q&As</sup>

TMap Next Foundation

## Pass EXIN EX0-113 Exam with 100% Guarantee

Free Download Real Questions & Answers **PDF** and **VCE** file from:

<https://www.pass4itsure.com/ex0-113.html>

100% Passing Guarantee  
100% Money Back Assurance

Following Questions and Answers are all new published by EXIN  
Official Exam Center

- ⚙ **Instant Download** After Purchase
- ⚙ **100% Money Back** Guarantee
- ⚙ **365 Days** Free Update
- ⚙ **800,000+** Satisfied Customers





### QUESTION 1

What is the aim of the activity `assessing the test basis`?

- A. To determine the risk of the various system components
- B. To select the most suitable test design techniques
- C. To determine whether the delivered system components can be tested in a useful manner
- D. To establish the testability of the test basis

Correct Answer: D

---

### QUESTION 2

What is the definition of valuation?

- A. Evaluation gives insight in the actual and future status of the end product.
- B. Evaluation is a process that gives insight into and advice on quality and related risks.
- C. Evaluation is assessing the interim products in the system development process.

Correct Answer: C

---

### QUESTION 3

For assessing the test basis separate checklists are consolidated into one checklist. What is the advantage of using a consolidated checklist?

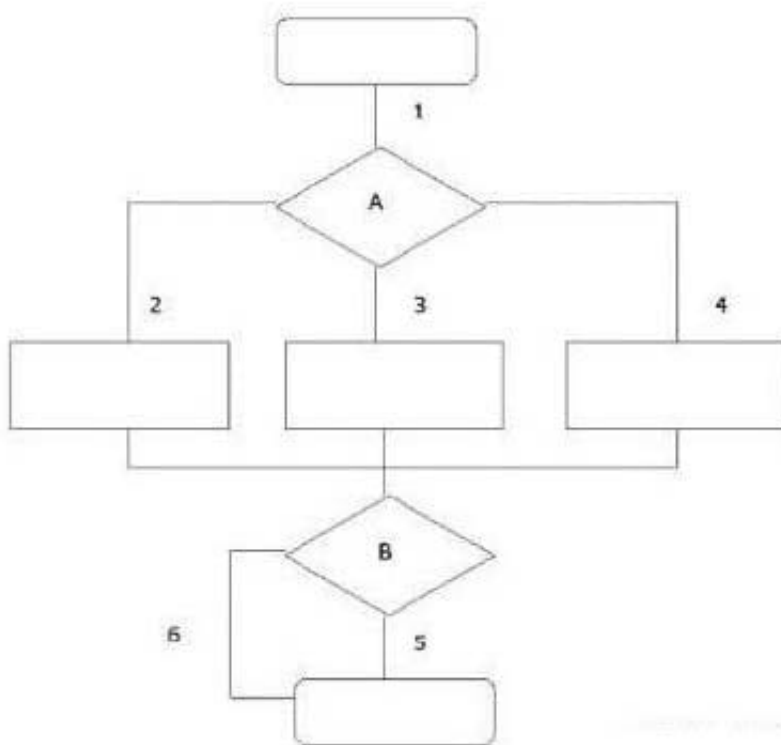
- A. finding the same test basis defect more often
- B. using a particular checklist in both the acceptance and system tests
- C. that every project compiles its own checklist
- D. avoiding duplicating work on identical parts of the test basis during the evaluation

Correct Answer: D

---

### QUESTION 4

See the illustration below:



What is the minimum number of logical test cases generated by the use of the Process Cycle Test if the coverage type paths test depth level 2 is used?

- A. 3
- B. 5
- C. 6
- D. 9

Correct Answer: C

#### QUESTION 5

Which type of tool is used in the Execution phase to test a module or component that has a relationship with programs that have not yet been realized?

- A. code coverage tool
- B. comparator
- C. 'model-based testing' tool
- D. stubs and drivers

Correct Answer: D



VCE & PDF

Pass4itSure.com

<https://www.pass4itsure.com/ex0-113.html>

2024 Latest pass4itsure EX0-113 PDF and VCE dumps Download

---

[Latest EX0-113 Dumps](#)

[EX0-113 Study Guide](#)

[EX0-113 Braindumps](#)