



# EX0-104<sup>Q&As</sup>

TMap Next Foundation

## Pass EXIN EX0-104 Exam with 100% Guarantee

Free Download Real Questions & Answers **PDF** and **VCE** file from:

<https://www.pass4itsure.com/ex0-104.html>

100% Passing Guarantee  
100% Money Back Assurance

Following Questions and Answers are all new published by EXIN  
Official Exam Center

- ⚙ **Instant Download** After Purchase
- ⚙ **100% Money Back** Guarantee
- ⚙ **365 Days** Free Update
- ⚙ **800,000+** Satisfied Customers



**QUESTION 1**

What is the aim of a unit test?

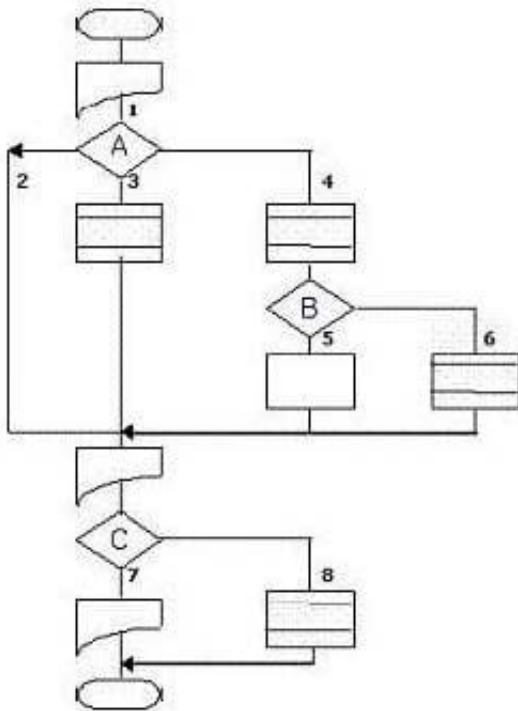
- A. to demonstrate that a unit meets the functional specifications
- B. to demonstrate that a unit meets the technical specifications
- C. to demonstrate that a unit integrates properly with other units

Correct Answer: B

---

**QUESTION 2**

See the procedure flow below:



How many test situations are produced when the coverage type paths with test depth level 2 is used?

- A. 3
- B. 8
- C. 12
- D. 13

Correct Answer: D

---

**QUESTION 3**

See the specification below:

IF	purchase = book
	IF purchase amount > = 100 Euro
	THEN discount percentage := 10%
	ENDIF
ELSE	error message
ENDIF	

Apply the Decision Table Test to the above specification. When doing this, use the coverage type multiple condition coverage. How many logical test cases result in an error message?

- A. 1
- B. 2
- C. 3
- D. 4

Correct Answer: B

---

**QUESTION 4**

See the specification below:

IF	Dutch telephone number AND telephone number does not contain 10 digits
THEN	error message
ENDIF	

How many logical test cases can be generated if a semantic test using the coverage type decision points modified condition/decision coverage is used?

- A. 1
- B. 2
- C. 3
- D. 4

Correct Answer: C

---



### QUESTION 5

During the Process Cycle Test, the coverage type paths is used. In which way can coverage be varied here?

- A. by using boundary values
- B. by using a higher or lower test depth level
- C. by taking equivalence classes into consideration

Correct Answer: B

[Latest EX0-104 Dumps](#)

[EX0-104 VCE Dumps](#)

[EX0-104 Practice Test](#)