



EADA105^{Q&As}

ArcGIS Desktop Associate 10.5

Pass Esri EADA105 Exam with 100% Guarantee

Free Download Real Questions & Answers **PDF** and **VCE** file from:

<https://www.pass4itsure.com/eada105.html>

100% Passing Guarantee
100% Money Back Assurance

Following Questions and Answers are all new published by Esri Official Exam Center

- ⚙ **Instant Download** After Purchase
- ⚙ **100% Money Back** Guarantee
- ⚙ **365 Days** Free Update
- ⚙ **800,000+** Satisfied Customers





QUESTION 1

When adding a new layer to ArcMap, an ArcGIS user gets a Geographic Coordinate System Warning dialog box.

What should the user do to resolve this issue?

- A. Check the Don't Warn Me Again check box on the dialog box
- B. Project the layer to match the geographic coordinate system of all other layers in the data frame
- C. Set a geographic transformation in the data frame properties
- D. Define the coordinate system of the layer to match the coordinate system of the data frame

Correct Answer: D

Reference: <http://desktop.arcgis.com/en/arcmap/10.3/map/working-with-arcmap/geographic-coordinatesystems-warning.htm>

QUESTION 2

An ArcGIS user is preparing a map that shows the extents of ecological regions of North, Central, and South America.

Which projected coordinate system should be used to minimize area distortion?

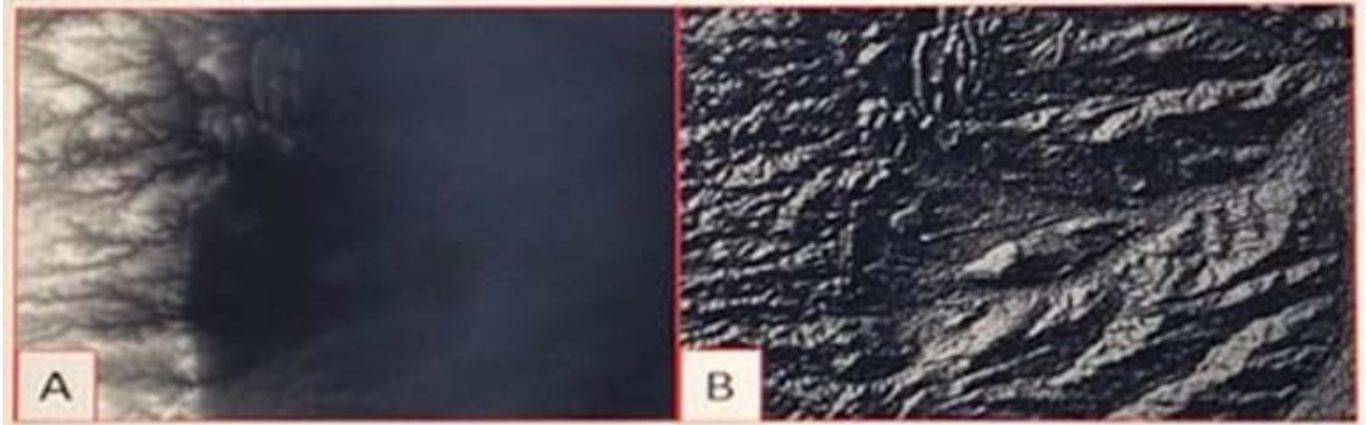
- A. Lambert Azimuthal Equal Area
- B. Azimuthal Equidistant
- C. Equidistant Cylindrical
- D. Mercator

Correct Answer: D

Reference: <https://storymaps.arcgis.com/stories/ea0519db9c184d7e84387924c84b703f>

QUESTION 3

Refer to the exhibit.



Which raster function will display image A as image B?

- A. Shaded Relief
- B. Slope
- C. Hillshade
- D. Aspect

Correct Answer: D

Reference: <http://desktop.arcgis.com/en/arcmap/10.3/manage-data/raster-and-images/aspect-function.htm>

QUESTION 4

A researcher is using ArcGIS Desktop. The researcher receives an assignment to create multiple printed map products with the same content but at different page sizes and map scales.

What should the researcher use to perform this task?

- A. ArcMap with the Toolshare folder structure and multiple map documents
- B. ArcGIS Pro with content connections and multiple map layouts
- C. ArcGIS Pro and import ArcMap documents from wherever the content was generated
- D. ArcMap with multiple map documents for each map product graticule

Correct Answer: C

QUESTION 5

An ArcGIS user must store 32000 multi-spectral images that must be presented to users as pre-classified.

Which storage format is most appropriate to prevent image duplication?

- A. Terrain dataset



B. Mosaic dataset

C. LAS dataset

D. Raster dataset

Correct Answer: B

[Latest EADA105 Dumps](#)

[EADA105 VCE Dumps](#)

[EADA105 Braindumps](#)