



E20-591^{Q&As}

Backup and Recovery Solutions Exam for Technology Architects

Pass EMC E20-591 Exam with 100% Guarantee

Free Download Real Questions & Answers **PDF** and **VCE** file from:

<https://www.pass4itsure.com/e20-591.html>

100% Passing Guarantee
100% Money Back Assurance

Following Questions and Answers are all new published by EMC
Official Exam Center

- ⚙️ **Instant Download** After Purchase
- ⚙️ **100% Money Back** Guarantee
- ⚙️ **365 Days** Free Update
- ⚙️ **800,000+** Satisfied Customers





QUESTION 1

When does the Avamar server run garbage collection?

- A. During the morning and evening cron jobs
- B. During the blackout window
- C. During the maintenance window
- D. During the morning cron job

Correct Answer: B

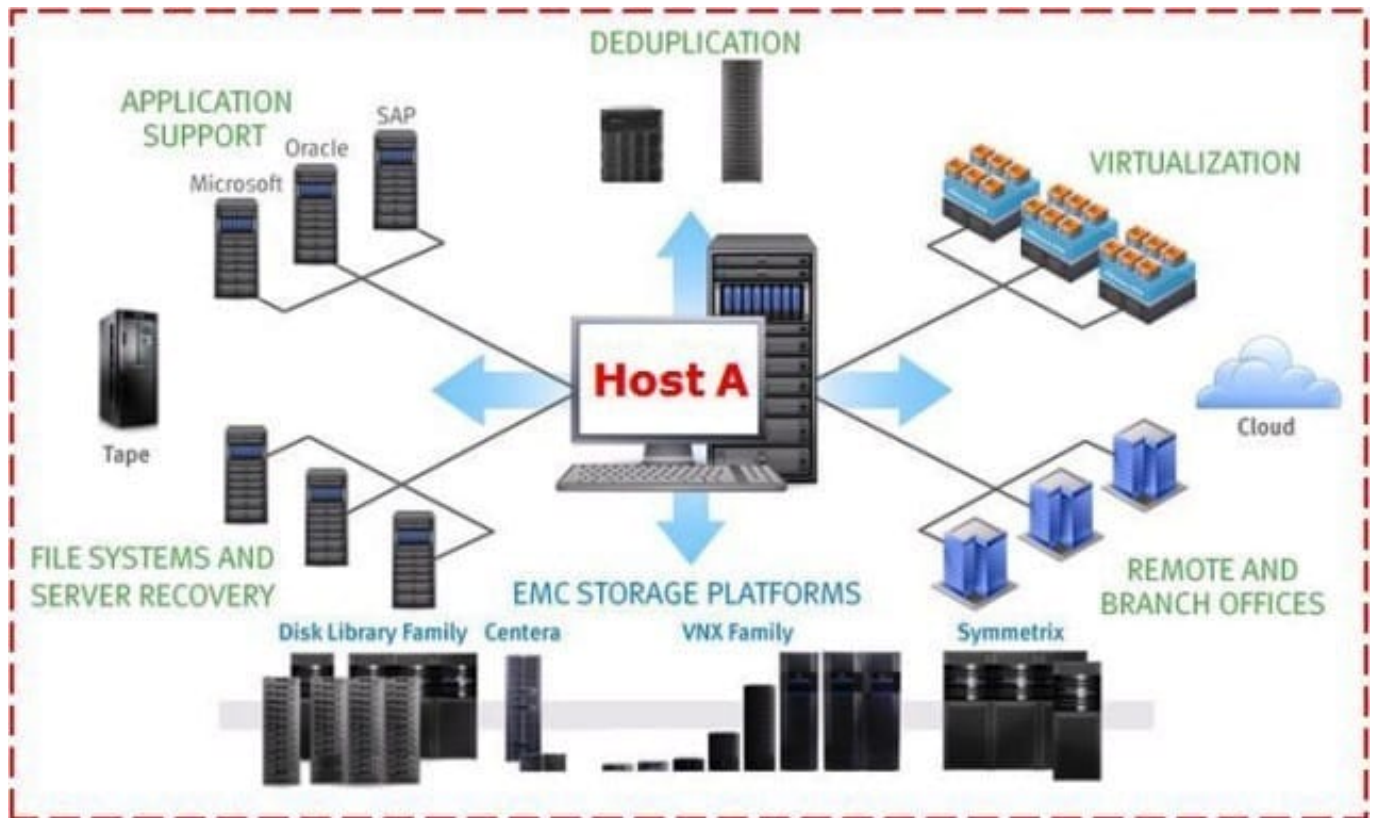
Blackout Window. The portion of each day reserved for performing server maintenance activities (primarily checkpoint and garbage collection) that require unrestricted access to the server.

Operational Impact No backup or administrative activities are allowed during the blackout window. You can perform restores.

Default Settings The default blackout window begins at 8 a.m. local server time and continues uninterrupted for three hours until 11 a.m. that same morning.

QUESTION 2

Based on the backup environment represented in the exhibit,



which EMC product would you recommend be installed on Host A?

- A. NetWorker
- B. Avamar
- C. Data Domain
- D. HomeBase

Correct Answer: A

QUESTION 3

When integrating EMC Avamar and EMC Data Domain, which types of clients are supported for backing up to a Data Domain device?

- A. Microsoft Exchange and VMware image
- B. Informix and Oracle
- C. VMware Guest and Microsoft SQL
- D. Microsoft Windows file system and Microsoft Exchange

Correct Answer: A

**QUESTION 4**

Which EMC Avamar interface can be used to restore data by the end-user without an Avamar user account?

- A. Desktop/Laptop
- B. Web Restore
- C. Avamar Administrator
- D. avatar

Correct Answer: A

QUESTION 5

A customer wants to purchase Data Protection Advisor (DPA) to support their two EMC Symmetrix arrays. One array is at the primary site and the other array is at the secondary site. The primary site has 80 TB raw of high-performance drives and the secondary site has 80 TB raw of high-capacity drives for replication. How would the DPA replication analysis option be licensed?

- A. One 80 TB high-performance and one 80 TB high-capacity
- B. One 80 TB primary site and one 80 TB secondary site
- C. One 160 TB high-capacity
- D. Two 80 TB Symmetrix

Correct Answer: A

[E20-591 Study Guide](#)

[E20-591 Exam Questions](#)

[E20-591 Braindumps](#)