



DES-5221^{Q&As}

Specialist Implementation Engineer Data Center Networking Exam

Pass EMC DES-5221 Exam with 100% Guarantee

Free Download Real Questions & Answers **PDF** and **VCE** file from:

<https://www.pass4itsure.com/des-5221.html>

100% Passing Guarantee
100% Money Back Assurance

Following Questions and Answers are all new published by EMC
Official Exam Center

-  **Instant Download** After Purchase
-  **100% Money Back** Guarantee
-  **365 Days** Free Update
-  **800,000+** Satisfied Customers





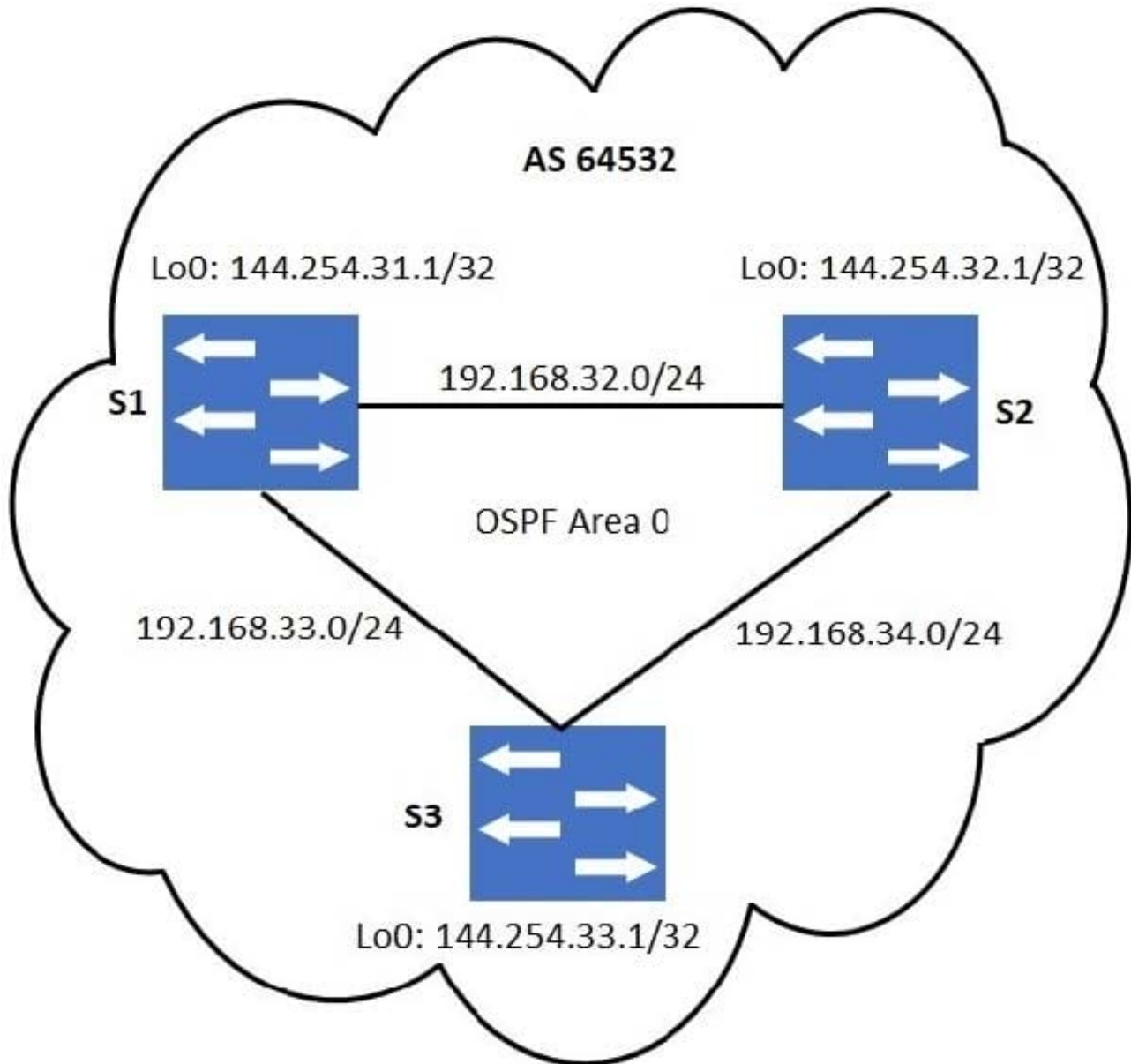
QUESTION 1

What is the size of the VLAN tag in an Ethernet frame?

- A. 4 bytes
- B. 8 bytes
- C. 1 byte
- D. 2 bytes

Correct Answer: A

QUESTION 2



Refer to the exhibit.

No static routing has been configured. For iBGP loopback-based peering, which statement is correct?

- A. It is not necessary for the routing table on S1 to have an entry for the loopback network of S3.
- B. S1 should have the Loopback network of S3 in its routing table for loopback-based peering.
- C. For iBGP peering, physical interface addresses must be used.
- D. A static route on S1 to 144.254.32.1/32 will eliminate the need for loopback-based peering with S3.

Correct Answer: B

QUESTION 3



What is a valid OS10 iBGP configuration?

- A. S2(config)# router bgp 64507 S2(config-router-bgp-64507)# peer-as 64507 S2(config-router-bgp-64507)# neighbor 192.168.32.1 S2(config-router-neighbor)# update-source loopback 0 S2(config-router-neighbor)# no shutdown
- B. S2(config)# router bgp 64507 S2(config-router-bgp-64507)# neighbor 192.168.32.1 S2(config-router-bgp-64507)# remote-as 64507 S2(config-router-bgp-64507)# update-source loopback 0 S2(config-router-bgp-64507)# no shutdown
- C. S2(config)# router bgp 64507 S2(config-router-bgp-64507)# neighbor 192.168.32.1 S2(config-router-neighbor)# remote-as 64507 S2(config-router-neighbor)# update-source loopback 0 S2(config-router-neighbor)# no shutdown
- D. S2(config)# router bgp 64507 S2(config-router-bgp-64507)# remote-as 64507 S2(config-router-bgp-64507)# neighbor 192.168.32.1 S2(config-router-neighbor)# update-source loopback 0 S2(config-router-neighbor)# no shutdown

Correct Answer: C

Reference: https://www.dell.com/support/manuals/us/en/04/networking-z9100/os10-enterprise-user-guide-10_4_1-pub/enable-bgp?guid=guid-5c64be15-4ebd-4372-a442-67f47b0f14e5&lang=en-us

QUESTION 4

What is the maximum number of LLDP neighbors supported per system with OS10?

- A. 250
- B. 256
- C. 384
- D. 512

Correct Answer: A

QUESTION 5

A network administrator enters the BGP command neighbor 10.0.2.1. The BGP router does NOT have any route to the 10.0.2.0 network. What will happen?

- A. The router will form a successful adjacency with its 10.0.2.1 neighbor. The BGP state will be listed as connect.
- B. The router will not form a successful adjacency with its 10.0.2.1 neighbor.
- C. It will send gratuitous ARP messages to attempt to discover a route to its 10.0.2.1 neighbor.
- D. It will send an ICMP packet to attempt to reach its 10.0.2.1 neighbor.

Correct Answer: B