



# DES-1721<sup>Q&As</sup>

Specialist - Implementation Engineer-SC Series Exam

**Pass EMC DES-1721 Exam with 100% Guarantee**

Free Download Real Questions & Answers **PDF** and **VCE** file from:

<https://www.pass4itsure.com/des-1721.html>

100% Passing Guarantee  
100% Money Back Assurance

Following Questions and Answers are all new published by EMC  
Official Exam Center

-  **Instant Download** After Purchase
-  **100% Money Back** Guarantee
-  **365 Days** Free Update
-  **800,000+** Satisfied Customers





### QUESTION 1

When installing DSM using an external SQL database what is a mandatory requirement?

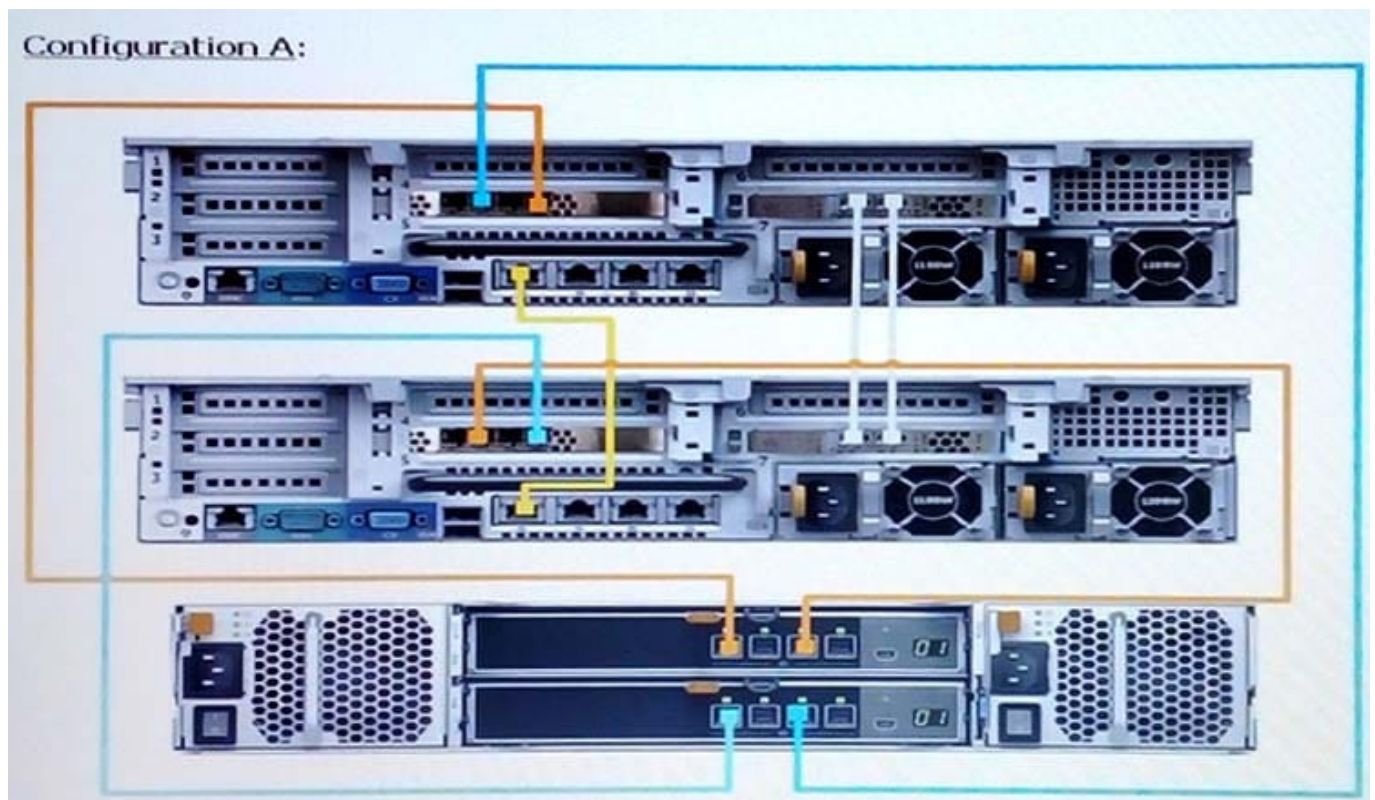
- A. Windows authentication
- B. Mixed mode authentication
- C. Microsoft SQL Server 2016
- D. Microsoft SQL Server 2012

Correct Answer: D

Reference: <https://www.dell.com/support/manuals/ai/en/aibsd1/storage-sc7020/dsm-2018-ig/choose-a-data-storage-method?guid=guid-7b390a72-2419-45b0-93ca-091c1d4823c2andlang=en-us>

### QUESTION 2

Based on best practices, which configuration represents how an SC9000 storage array with one SC420 expansion enclosure is cabled?

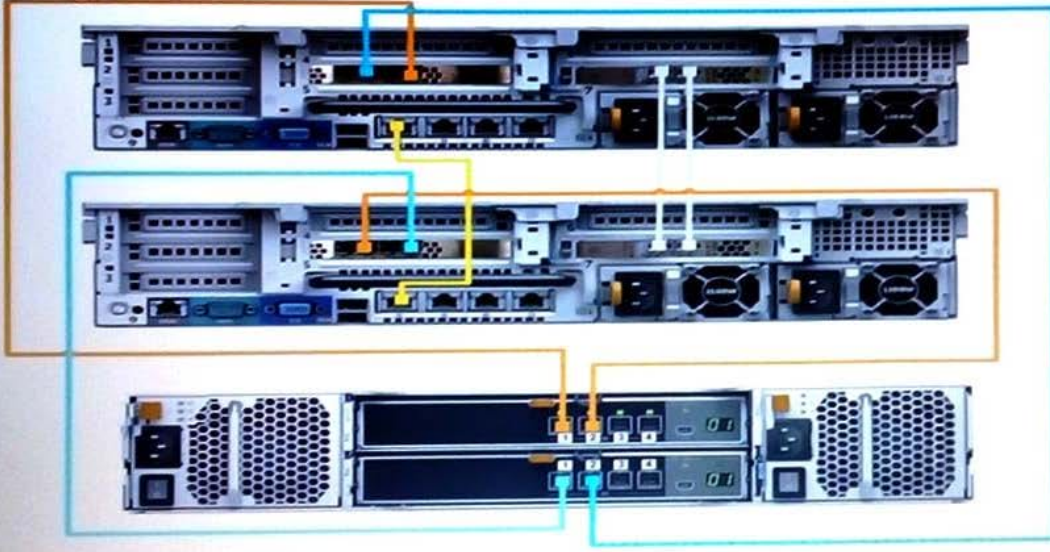


A.

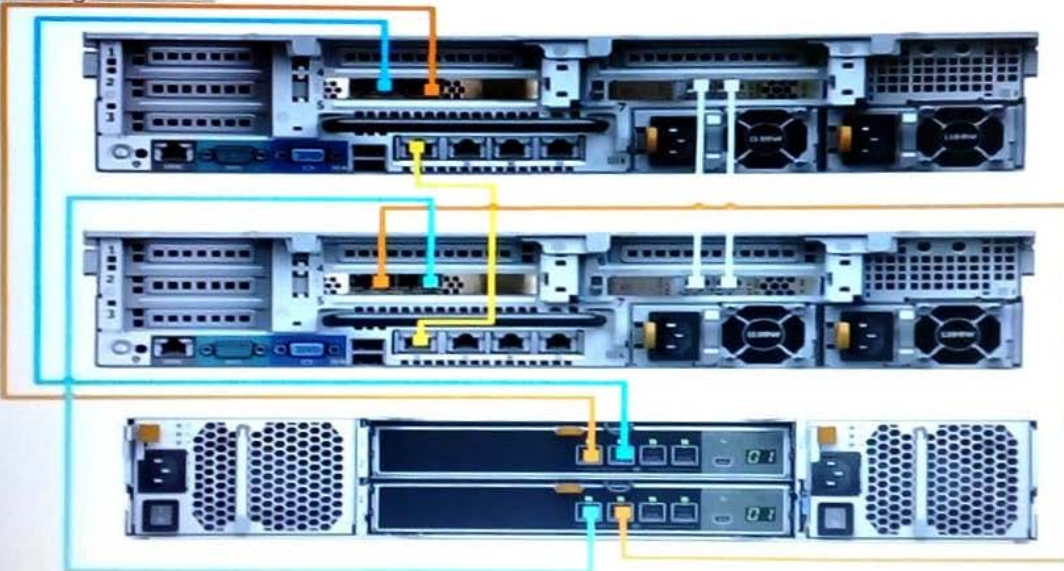




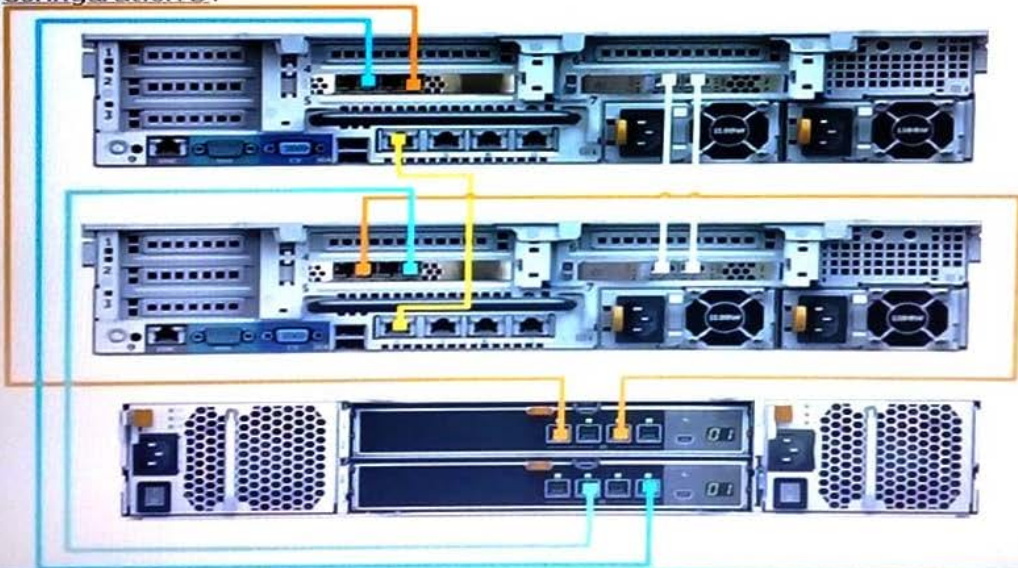
B. Configuration B:



C. Configuration C:



D. Configuration D:





B. C. D.

Correct Answer: C

---

### QUESTION 3

What three core features are part of the protection bundle?

- A. Live Volume, Remote Instant Replay, Replay Manager
- B. Data Progression, Remote Instant Replay, Replay Manager
- C. Live Volume, Data Progression, Replay Manager
- D. Live Volume, Remote Instant Replay, FastTrack

Correct Answer: A

Reference: <https://www.dell.com/support/manuals/ai/en/aibsd1/storage-sc9000/sc-7.2-rn/sc4020-features-and-licenses?guid=guid-6c1c9dd9-d086-4b99-bca3-bb650dcee9b5&lang=en-us>

---

### QUESTION 4

An SC9000 controller was rebooted to test failover and is back online. Do the controllers need to be rebalanced?

- A. Yes; however, the other controller needs to be rebooted first
- B. No; this is done automatically as part of the reboot process in DSM
- C. No; they are automatically rebalanced on the SC9000
- D. Yes; this can be done from the Summary, Storage, or Hardware tab in DSM

Correct Answer: D

---

### QUESTION 5

A customer wants to configure a threshold alert definition. Which types of definitions can be configured?

- A. Latency, Disks, and Replication
- B. Storage, Latency, and Disks
- C. Storage, Replication, and Hardware
- D. I/O Usage, Storage, and Replication

Correct Answer: D

---



VCE & PDF

Pass4itSure.com

<https://www.pass4itsure.com/des-1721.html>

2024 Latest pass4itsure DES-1721 PDF and VCE dumps Download

---

Reference: <https://www.dell.com/storagehelp/dellstorageclient/2016R3.10/en-US/GUID-EF495710-B8B4-4763-884D-D5CA9C206767.html>

[DES-1721 Practice Test](#)

[DES-1721 Study Guide](#)

[DES-1721 Braindumps](#)