



# C9550-605<sup>Q&As</sup>

IBM WebSphere Enterprise Service Bus V7.0 Integration Development

## Pass IBM C9550-605 Exam with 100% Guarantee

Free Download Real Questions & Answers **PDF** and **VCE** file from:

<https://www.pass4itsure.com/c9550-605.html>

100% Passing Guarantee  
100% Money Back Assurance

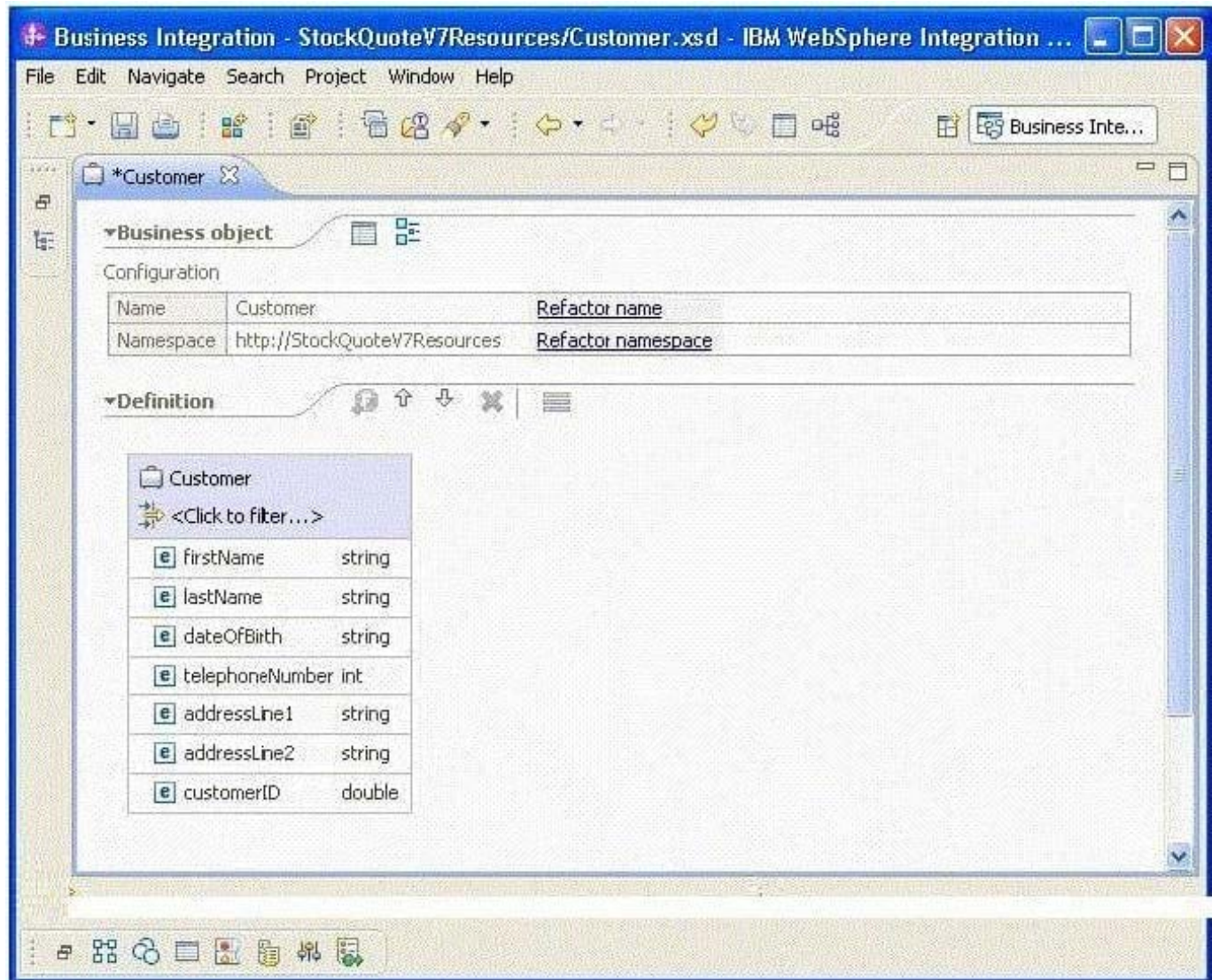
Following Questions and Answers are all new published by IBM Official Exam Center

- ⚙️ **Instant Download** After Purchase
- ⚙️ **100% Money Back** Guarantee
- ⚙️ **365 Days** Free Update
- ⚙️ **800,000+** Satisfied Customers



**QUESTION 1**

Refer to the Exhibit.



An integration developer implements a mediation flow with an interface containing the business object shown in the Exhibit. When the mediation flow is invoked by external applications, problems are occurring due to an application sending a non-numeric value for the customerID. How should the integration developer BEST proceed in order to improve the flow so that this problem is caught as early as possible?

- A. Use a Set Message Type primitive to correct the business object.
- B. Use a Data Handler primitive to handle the mismatch in data types.
- C. Use a Message Filter primitive to filter out the invalid business object.
- D. Use a Message Validator primitive to ensure the business object instance matches its schema.

Correct Answer: D





## QUESTION 2

Refer to the Exhibit.

The screenshot shows the IBM WebSphere Integration Developer interface. The top toolbar includes File, Edit, Navigate, Search, Project, Window, and Help. The main workspace displays the configuration for a business object named 'StockQuoteV7Response'. The 'Configuration' tab is active, showing the following details:

Name	StockQuoteV7Response	Refactor name
Namespace	http://StockQuoteV7Resources	Refactor namespace

The 'Definition' tab is also visible, showing a tree structure with the following elements:

- StockQuoteV7Response
  - <Click to filter...>
  - value (float)
  - qualityOfService (string)

The bottom pane shows the 'Properties' view for the 'value' element. The 'Description' tab is active, displaying the following configuration:

Description	Name	Type	Default value	Minimum occurrences	Maximum occurrences	Minimum value	Maximum value	Only permit certain values
	value	float { http://StockQuoteV7Resources }		0	1	20	35	<input checked="" type="checkbox"/>

The 'Properties' view also includes buttons for 'Browse...' and 'New...' next to the 'Type' field.

A business object has been defined. A restriction has been placed on the values allowed in the value parameter. If the value contained in this element falls outside of the defined range, an error must be logged and the flow must stop. How should the integration developer BEST implement this requirement into a mediation flow?

- A. Use a Custom Mediation primitive to extract and check the value.
- B. Use a Message Validator primitive to ensure the value lies in the range defined.
- C. Use a Service Level Agreement (SLA) primitive to ensure that the value falls within the range.
- D. Use a Policy Resolution primitive to ensure that the value meets the policy of being in the range.

Correct Answer: B

## QUESTION 3



A developer is implementing a mediation flow and none of the built-in primitives provide the needed functionality. They decide to implement the mediation logic using the Custom primitive.

At runtime, if an exception occurs in the custom code, what will happen?

- A. An exception is thrown and the fail terminal is fired.
- B. An exception is thrown and the message is consumed silently.
- C. An exception is thrown and the out terminal is fired.
- D. No exception is thrown and the fail terminal is fired.

Correct Answer: A

---

#### QUESTION 4

An integration developer is designing a business object map and must set an orderType element in the target based on the value of an orderNumber element in the source. Each orderNumber element value has a two-letter prefix that indicates the type of order (ex: SU-000123). Which transform type would be most appropriate for this situation?

- A. Move
- B. Assign
- C. Extract
- D. Substring

Correct Answer: C

---

#### QUESTION 5

An integration developer has created a mediation module and is testing it using integration test client (ITC) with default test configuration. Which of the following statements depicts the behaviour of monitors?

- A. The integration developer must add monitors before executing a test using ITC
- B. The integration developer must enable Common Event Infrastructure (CEI) for monitors.
- C. Monitors are automatically added for any component wires and exports of the module.
- D. Monitors emit common base events for requests and responses that flow through the wires and exports of the module for every test run.

Correct Answer: C

[C9550-605 PDF Dumps](#)

[C9550-605 VCE Dumps](#)

[C9550-605 Braindumps](#)