



# C9550-275<sup>Q&As</sup>

Bluemworks Live IBM Business Process Manager Express or Standard Edition V8.0 BPM Analysis

## Pass IBM C9550-275 Exam with 100% Guarantee

Free Download Real Questions & Answers **PDF** and **VCE** file from:

<https://www.pass4itsure.com/c9550-275.html>

100% Passing Guarantee  
100% Money Back Assurance

Following Questions and Answers are all new published by IBM Official Exam Center

-  **Instant Download** After Purchase
-  **100% Money Back** Guarantee
-  **365 Days** Free Update
-  **800,000+** Satisfied Customers





### QUESTION 1

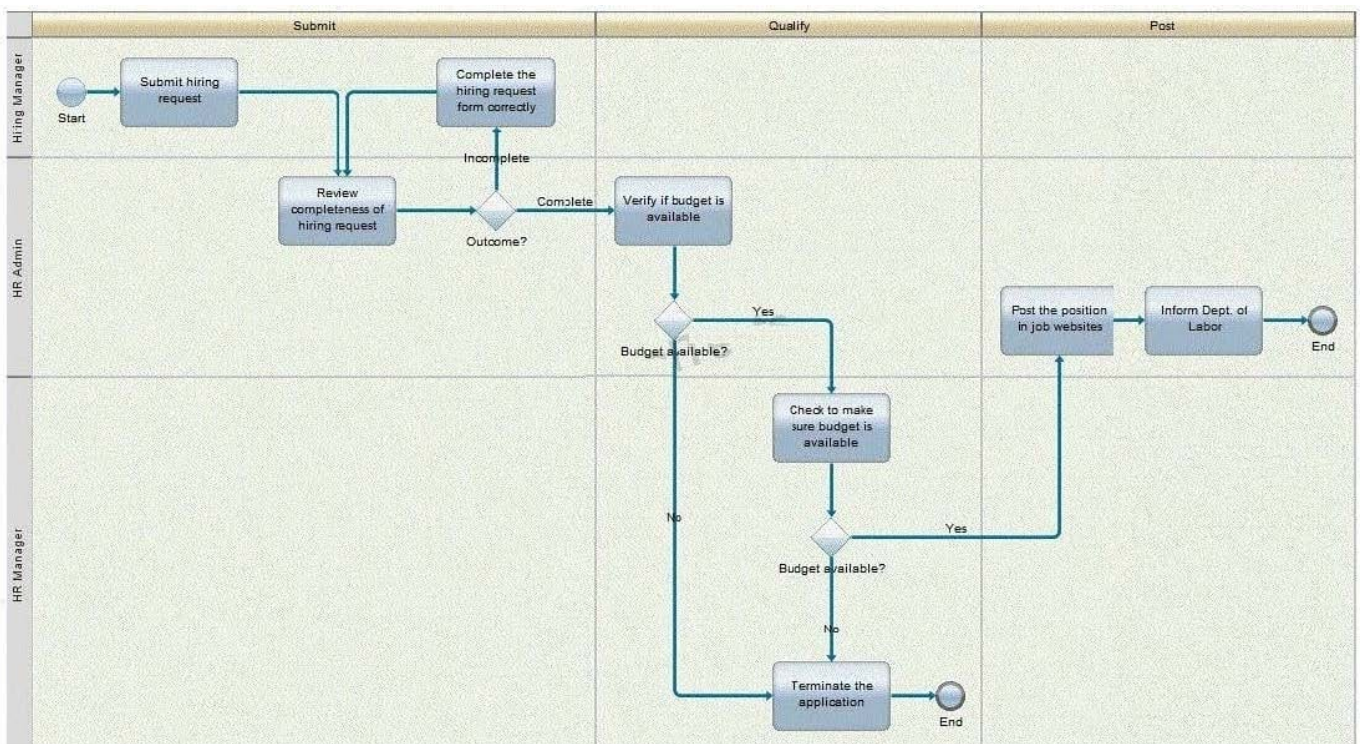
A company needs to improve their hiring process and has requested a BPM analyst to define a future state process. After analyzing the current state process, the BPM analyst found many opportunities for improvement which could lead this initiative into a 5 year project. How should the BPM analyst map the future state process?

- A. Map a short term process which includes only low effort opportunities.
- B. Map one single process which includes all improvement opportunities.
- C. Build a short term and a long term future state process road-map through prioritization of the opportunities.
- D. Build a roadmap of processes for all releases in the next 5 years by categorizing the opportunities into individual releases.

Correct Answer: C

### QUESTION 2

A company needs to improve their Hiring Process and hired a BPM analyst to analyze their current process. The analyst completed documenting the current state process of submitting the hiring request (refer to the process diagram below) and did a "Value-Add" Analysis with the process stakeholders.



Identify the "Non-Value Add" activities in this process.

- A. "Inform Dept. of Labor" and "Terminate the application"
- B. "Inform Dept. of Labor" and "Check to make sure budget is available"



C. "Complete the hiring request form correctly" and "Terminate the application"

D. "Complete the hiring request form correctly" and "Check to make sure budget is available"

Correct Answer: D

---

### QUESTION 3

A new employee just started working with a company and only received their laptop in week 4.

The BPM analyst investigated the cause:

-Equipment was not ordered until week 2

-

The manager did not complete the new hire checklist.

-

The manager did not know how to access the checklist.

- No one communicated to the manager how to access the checklist.

-No communication plan for the on-boarding process.

- The root cause of the initial problem was that no one communicated to the manager there was a checklist.

Which tool did the BPM analyst use in order to find out the root cause?

A. 5 Whys

B. 5 Whats

C. 5 Whens

D. 5 Whos

Correct Answer: A

---

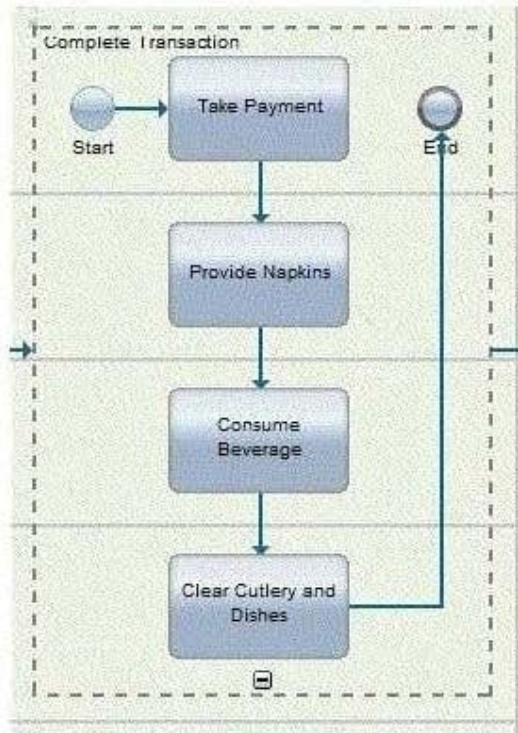
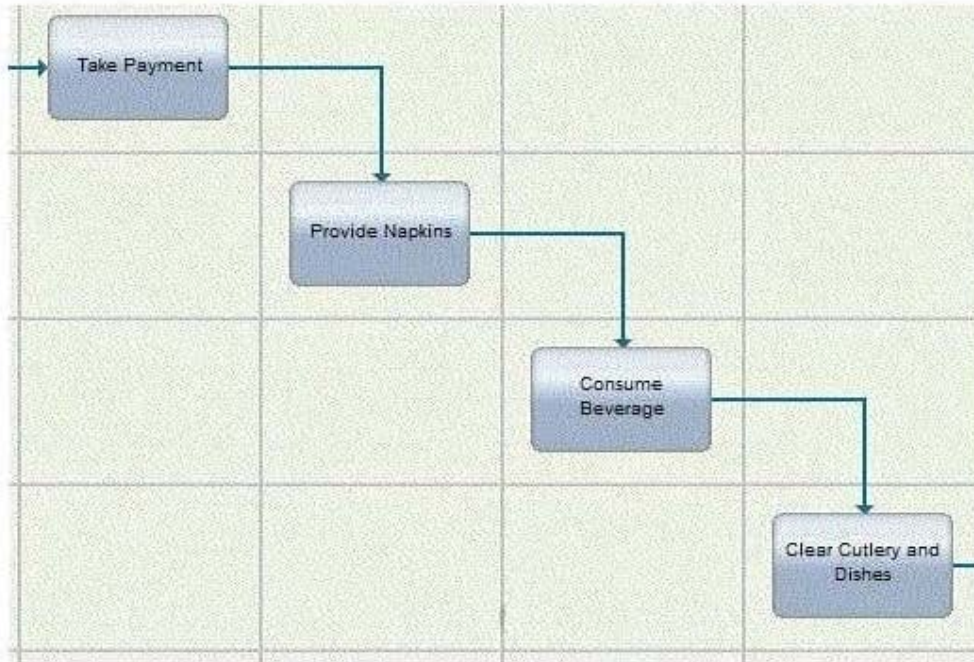
### QUESTION 4

A BPM analyst has modeled the process for creating a custom coffee beverage. The BPM analyst noticed a lot of detail in the process model and has started refactoring the model to reduce the complexity.

Which section of the process represents a series of activities performed by the same participant that the analyst reduced into a single activity?

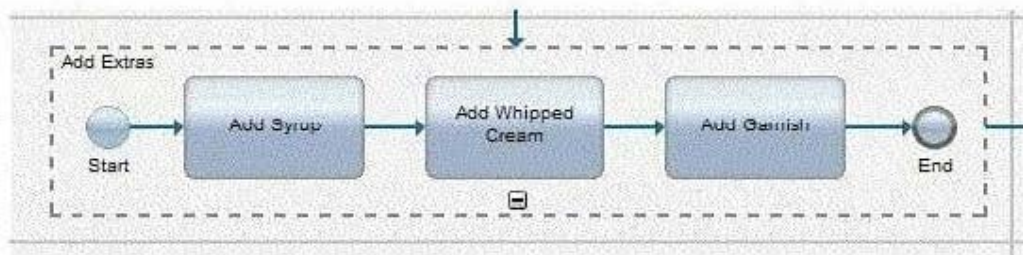
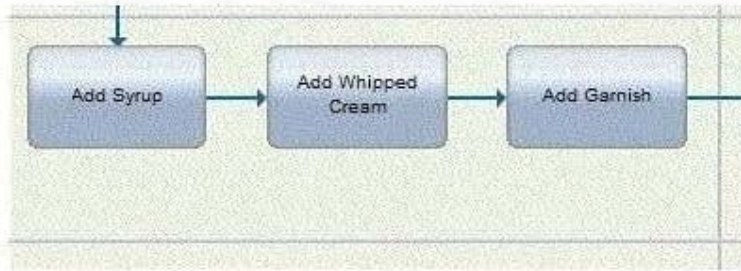


C.A.



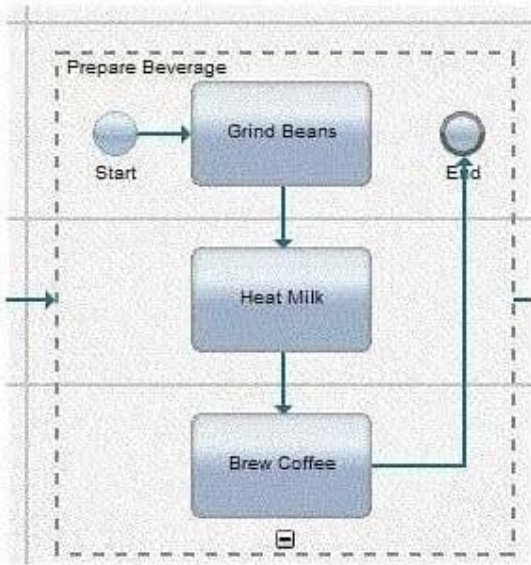
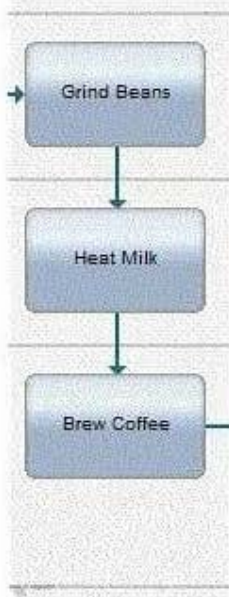


C B.



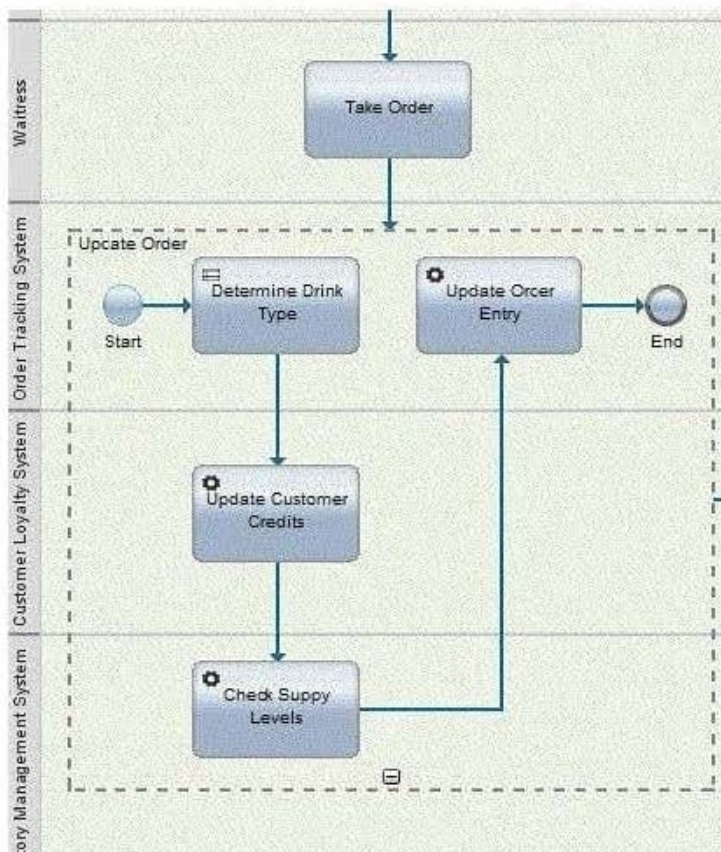
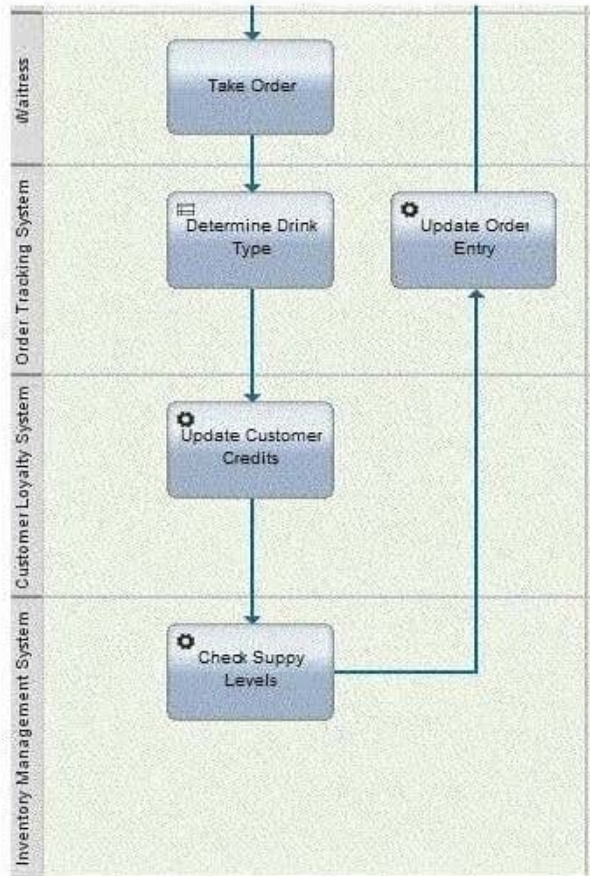


C.





C.D.





- A. Exhibit A
- B. Exhibit B
- C. Exhibit C
- D. Exhibit D

Correct Answer: B

---

#### QUESTION 5

A company that processes applications has been using IBM Business Process Manager V8.0 over the last year. The company has asked IBM to analyze its processes in production because it wants to continue improving its processes. The IBM BPM team sends a BPM analyst. What should the BPM analyst do?

- A. Use the Discovery View in Blueworks Live to perform inspection on the process.
- B. Use the Analyze feature in Blueworks Live to perform Historical and Simulation Analysis.
- C. Use the Optimizer in IBM Business Process Manager V8.0 to perform Historical and Simulation Analysis.
- D. Use the Process Inspector in IBM Business Process Manager V8.0 to perform inspection on the process.

Correct Answer: C

[C9550-275 PDF Dumps](#)

[C9550-275 Practice Test](#)

[C9550-275 Study Guide](#)