



# C5050-062<sup>Q&As</sup>

Rational UrbanCode Deploy

**Pass IBM C5050-062 Exam with 100% Guarantee**

Free Download Real Questions & Answers **PDF** and **VCE** file from:

<https://www.pass4itsure.com/c5050-062.html>

100% Passing Guarantee  
100% Money Back Assurance

Following Questions and Answers are all new published by IBM Official Exam Center

-  **Instant Download** After Purchase
-  **100% Money Back** Guarantee
-  **365 Days** Free Update
-  **800,000+** Satisfied Customers





### QUESTION 1

You have multiple application environments sharing the same resource. What will you see in the inventory of this resource?

- A. Only the versions of components deployed from one application
- B. All versions of all components deployed from the sharing applications
- C. Last versions of all components deployed from the sharing applications
- D. Only the last version of the component deployed from the application that was used last

Correct Answer: B

The intention is that you could look at the resource tree on the environment detail page to see all versions currently deployed to resources in that environment.

References: <https://developer.ibm.com/answers/questions/8129/where-to-find-what-is-really-deployed-in-an-environment.html>

---

### QUESTION 2

IBM UrbanCode Deploy (UCD) offers an integration with Chef. How does this integration work?

- A. IBM UCD installs Chef solo as part of the deployment process and also allows users to execute Chef nodes.
- B. IBM UCD integrates with Chef server and manages updating Chef endpoints by running scripts against the Chef server.
- C. Chef server and Chef solo poll the IBM UCD repository for new artifacts to deploy, and then deploy them.
- D. Chef server and Chef solo allows for the IBM UCD agent to be automatically installed on Chef endpoints.

Correct Answer: C

Incorrect Answers:

A: Set up a UCD server with the Chef plug-in installed.

To use the IBM Integration Bus cookbook with UCD, you must install the Chef plug-ins, as these are not there by default.

References: <https://developer.ibm.com/integration/blog/2014/06/23/how-to-automate-ibm-integration-busdeployments-using-ibm-urbancode-deploy-and-chef/>

---

### QUESTION 3

Which three types of component processes manage environment inventory when they execute?



- A. Uninstall Process
- B. Deployment Process
- C. Operational Process
- D. Generic Process

Correct Answer: ABC

You use the following component process types: deployment, Configuration Deployment, operational, and uninstall.

References: [https://www.ibm.com/support/knowledgecenter/SS4GSP\\_6.2.0/com.ibm.udeploy.doc/topics/comp\\_process\\_types.html](https://www.ibm.com/support/knowledgecenter/SS4GSP_6.2.0/com.ibm.udeploy.doc/topics/comp_process_types.html)

---

#### QUESTION 4

When installing and configuring an IBM UrbanCode Deploy (UCD) agent, how many ports does the agent require to communicate with the UCD server?

- A. One port to receive commands from the server and to return logs for execution results.
- B. Two ports: one to receive commands from the server and one port to return logs for execution results
- C. Two ports: one to receive commands from the server and return logs for executions results, and one port to handle administration of the agent
- D. Three ports: one to receive commands from the server, one to return logs for execution results and one port to handle administration of the agent

Correct Answer: A

Server Port: The port that is used by the IBM UrbanCode Deploy server or agent relay to connect to the agent. The default port for connecting to the server is 7918. The default port for connecting to an agent relay is 7916. Note: There is also a Proxy Port, which is the HTTP proxy port of the agent relay, if used. The default value is 20080.

References: [http://www.ibm.com/support/knowledgecenter/SS4GSP\\_6.2.0/com.ibm.udeploy.doc/topics/agent\\_installremote.html](http://www.ibm.com/support/knowledgecenter/SS4GSP_6.2.0/com.ibm.udeploy.doc/topics/agent_installremote.html)

---

#### QUESTION 5

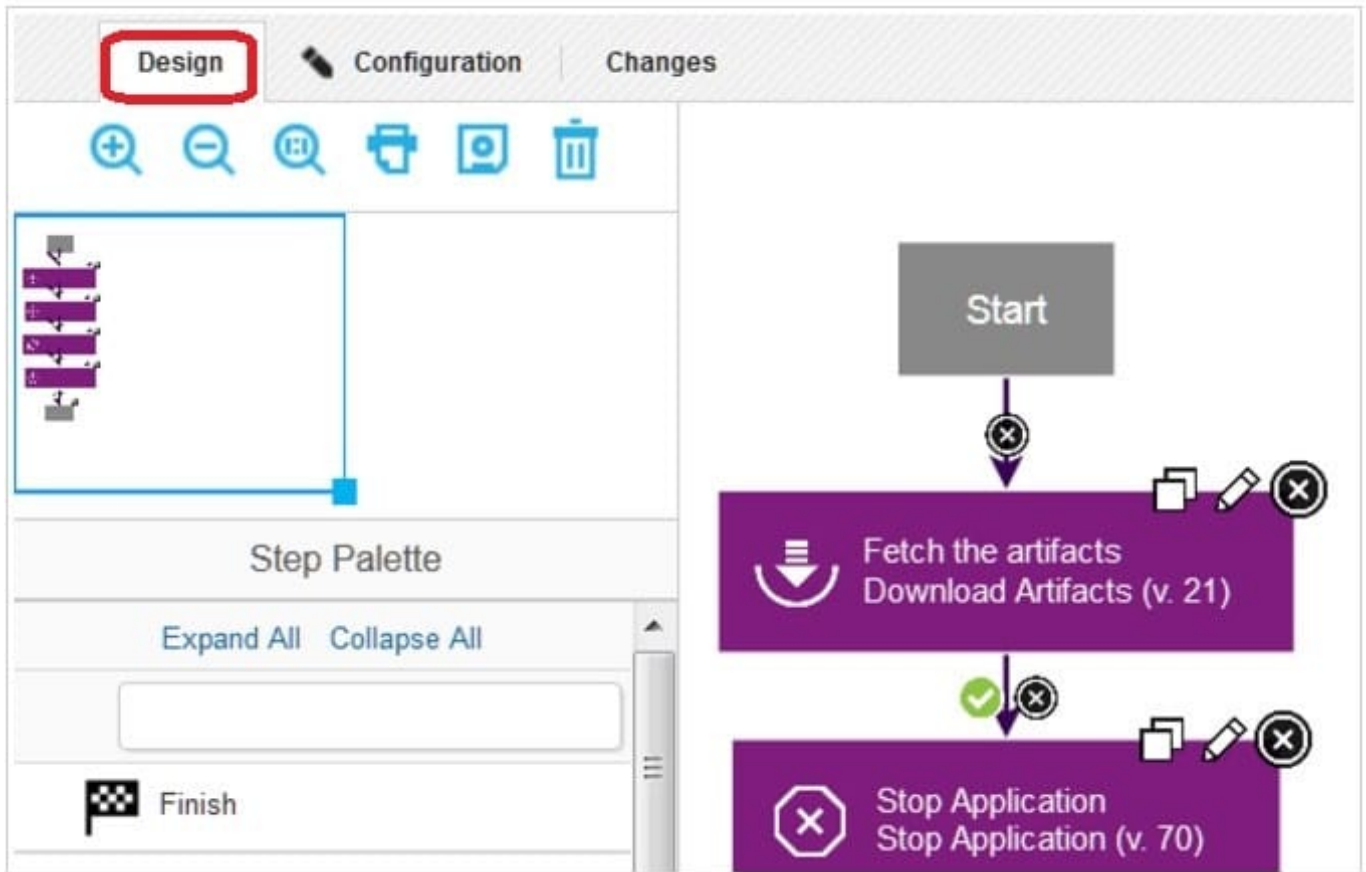
Which steps are used to create or modify a process by combining plugin steps?

- A. Select the process, then define or edit it using the Design tab of the Process user interface
- B. Select the process, then define or edit it using the Edit tab of the Process user interface.
- C. Select a component, then define or edit its process using the Process tab of the Component user interface.
- D. Select a component, then define or edit its process using the Workflow tab of the Component user interface

Correct Answer: A



In the process editor you organize the steps in a process, specify their properties, and connect them to each other. By combining automation plug-in steps in the process editor, you can create fully automated deployment processes. When you create a process, you drag steps onto the design area and define the properties as you go. Property values can be specified when you define the process or at run time. The process flow is defined by drawing connections between steps. The following illustration, shows a series of automation-type plug-in steps and the connections between them.



Note: A component process is a series of user-defined steps that operate on a component's artifacts. Each component has at least one process and can have several. Component processes are created with the process editor. The process editor is a visual drag-and-drop editor that enables you to drag process steps onto the design space and configure them as you go. Process steps are selected from a menu of standard steps.

References: [http://www.ibm.com/support/knowledgecenter/SS4GSP\\_6.1.3/com.ibm.udeploy.reference.doc/topics/plugin\\_ch.html](http://www.ibm.com/support/knowledgecenter/SS4GSP_6.1.3/com.ibm.udeploy.reference.doc/topics/plugin_ch.html)

[C5050-062 VCE Dumps](#)

[C5050-062 Practice Test](#)

[C5050-062 Exam Questions](#)