



AZ-300^{Q&As}

Microsoft Azure Architect Technologies

Pass Microsoft AZ-300 Exam with 100% Guarantee

Free Download Real Questions & Answers **PDF** and **VCE** file from:

<https://www.pass4itsure.com/az-300.html>

100% Passing Guarantee
100% Money Back Assurance

Following Questions and Answers are all new published by Microsoft
Official Exam Center

-  **Instant Download** After Purchase
-  **100% Money Back** Guarantee
-  **365 Days** Free Update
-  **800,000+** Satisfied Customers

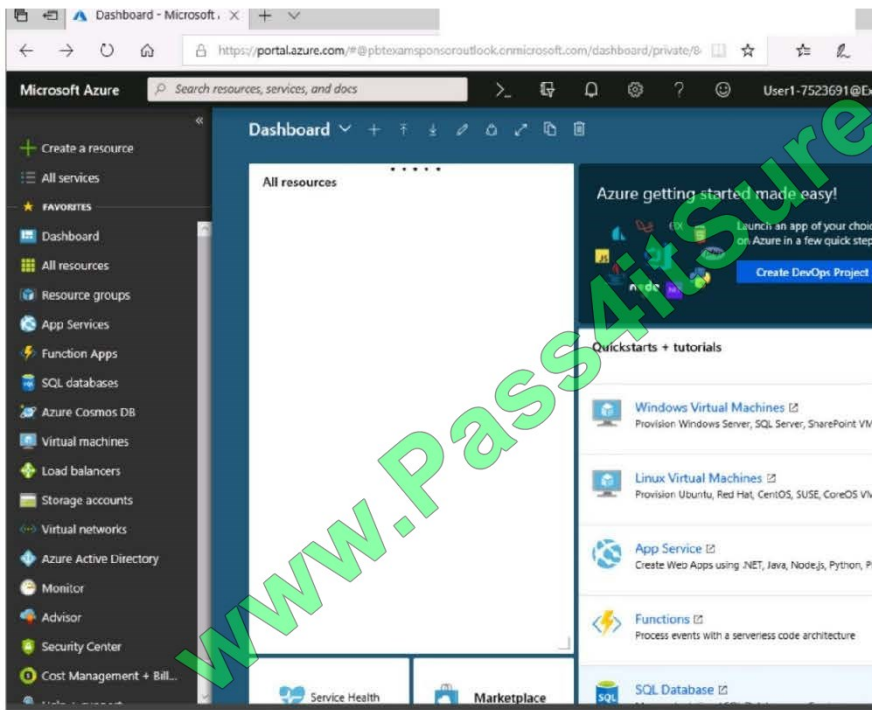
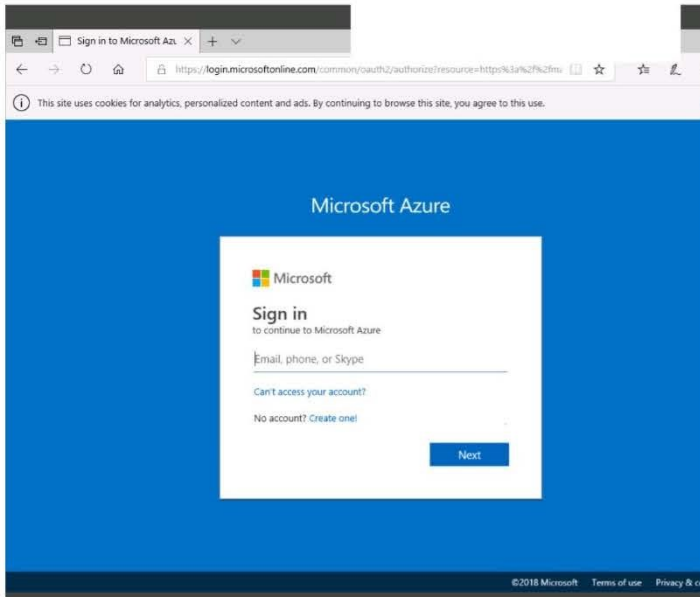




QUESTION 1

SIMULATION

Click to expand each objective. To connect to the Azure portal, type <https://portal.azure.com> in the browser address bar.





Home > Storage accounts > Create storage account

Create storage account

✓ Validation passed

Basics Advanced Tags Review + create

BASICS

Subscription	Microsoft AZ-100 5
Resource group	corpdata7523690
Location	East US
Storage account name	corpdata7523690n1
Deployment model	Resource manager
Account kind	StorageV2 (general purpose v2)
Replication	Read-access geo-redundant storage (RA-GRS)
Performance	Standard
Access tier (default)	Hot

ADVANCED

Secure transfer required	Enabled
Hierarchical namespace	Disabled

Create Previous Next Download a template for automation

Home > Storage accounts > Create storage account

Create storage account

Basics Advanced Tags Review + create

BASICS

Subscription	Microsoft AZ-100 5
Resource group	corpdata7523690
Location	East US
Storage account name	corpdata7523690n1
Deployment model	Resource manager
Account kind	StorageV2 (general purpose v2)
Replication	Read-access geo-redundant storage (RA-GRS)
Performance	Standard
Access tier (default)	Hot

ADVANCED

Secure transfer required	Enabled
Hierarchical namespace	Disabled

*** Submitting deployment...
Submitting the deployment template for resource 'corpdata7523690'.

Home > Microsoft.StorageAccount-20181011170335 - Overview

Microsoft.StorageAccount-20181011170335 - Overview

Deployment

Delete Cancel Redeploy Refresh

Search (Ctrl+/)

Overview

- Outputs
- Inputs
- Template

*** Your deployment is underway

Check the status of your deployment, manage resources, or troubleshoot deployment issues. Pin this page to your dashboard to easily find it next time.

Deployment
name: Microsoft.StorageAccount-20181011170335
Subscription: Microsoft AZ-100 5
Resource group: corpdata7523690


DEPLOYMENT DETAILS (Download)
Start time: 10/11/2018 5:04:06 PM
Duration: 17 seconds
Correlation ID: bd0806a4-d1bd-42db-be6b-55e0ec38f49b

RESOURCE	TYPE	STATUS	OPERATL...
No results.			



[Home](#) > [Virtual machines](#) > Create a virtual machine

Create a virtual machine

 Validation failed. Required information is missing or not valid.

[Basics](#) • [Disks](#) [Networking](#) [Management](#) [Guest config](#) [Tags](#) [Review + create](#)

PRODUCT DETAILS

Ubuntu Server 18.04 LTS

by Canonical

[Terms of use](#) | [Privacy policy](#)

Pricing not available for this offering

View [Pricing details](#) for more information.

Standard D2s v3

by Microsoft

[Terms of use](#) | [Privacy policy](#)

Subscription credits apply 

0.0960 USD/hr

[Pricing for other VM sizes](#)

TERMS

By clicking "Create", I agree to the legal terms and privacy statement(s) associated with the Marketplace offering(s) listed above; (b) authorize Microsoft to bill my current payment method for the fees associated with the offering(s), with the same billing frequency as my Azure subscription; and (c) agree that Microsoft may share my contact, usage and transactional information with the provider(s) of the offering(s) for support, billing and other transactional activities. Microsoft does not provide rights for third-party offerings. See the [Azure Marketplace Terms](#) for additional details.

When you are finished performing all the tasks, click the `Next` button.

Note that you cannot return to the lab once you click the `Next` button. Scoring occurs in the background while you complete the rest of the exam.

Overview

The following section of the exam is a lab. In this section, you will perform a set of tasks in a live environment. While most functionality will be available to you as it would be in a live environment, some functionality (e.g., copy and paste, ability to navigate to external websites) will not be possible by design.

Scoring is based on the outcome of performing the tasks stated in the lab. In other words, it doesn't matter how you accomplish the task, if you successfully perform it, you will earn credit for that task.

Labs are not timed separately, and this exam may have more than one lab that you must complete. You can use as much time as you would like to complete each lab. But, you should manage your time appropriately to ensure that you are

able to complete the lab(s) and all other sections of the exam in the time provided.

Please note that once you submit your work by clicking the Next button within a lab, you will NOT be able to return to the lab.



To start the lab

You may start the lab by clicking the Next button.

You need to deploy an Azure virtual machine named VM1004a based on an Ubuntu Server image, and then to configure VM1004a to meet the following requirements:

- The virtual machines must contain data disks that can store at least 15 TB of data
- The data disk must be able to provide at least 2,000 IOPS
- Storage costs must be minimized What should you do from the Azure portal?

Correct Answer: See solution below.

Step 1: Open the Azure portal.

Step 2: On the left menu, select All resources. You can sort the resources by Type to easily find your images.

Step 3: Select the image you want to use from the list. The image Overview page opens.

Step 4: Select Create VM from the menu.

Step 5: Enter the virtual machine information. Select VM1004a as the name for the first Virtual machine. The user name and password entered here will be used to log in to the virtual machine. When complete, select OK. You can create the

new VM in an existing resource group, or choose Create new to create a new resource group to store the VM.

Step 6: Select a size for the VM. To see more sizes, select View all or change the Supported disk type filter. To support 15 TB of data you would need a Premium disk.

Step 7: Under Settings, make changes as necessary and select OK.

Step 8: On the summary page, you should see your image name listed as a Private image. Select Ok to start the virtual machine deployment.

References:

<https://docs.microsoft.com/en-us/azure/virtual-machines/windows/create-vm-generalized-managed>

QUESTION 2

HOTSPOT

You have Azure subscription that contains a virtual network named VNet1. VNet1 uses an IP address space of 10.0.0.0/16 and contains the subnets in the following table.

Name	IP address range
Subnet0	10.0.0.0/24
Subnet1	10.0.1.0/24
Subnet2	10.0.2.0/24
GatewaySubnet	10.0.254.0/24



Subnet1 contains a virtual appliance named VM1 that operates as a router.

You create a routing table named RT1.

You need to route all inbound traffic to VNet1 through VM1.

How should you configure RT1? To answer, select the appropriate options in the answer area.

NOTE: Each correct selection is worth one point.

Hot Area:

Answer Area

Address prefix

	▼
10.0.0.0/16	
10.0.1.0/24	
10.0.254.0/24	

Next hop type:

	▼
Virtual appliance	
Virtual network	
Virtual network gateway	

Assigned to:

	▼
GatewaySubnet	
Subnet0	
Subnet1 and Subnet2	

Correct Answer:



Answer Area

Address prefix

	▼
10.0.0.0/16	
10.0.1.0/24	
10.0.254.0/24	

Next hop type:

	▼
Virtual appliance	
Virtual network	
Virtual network gateway	

Assigned to:

	▼
GatewaySubnet	
Subnet0	
Subnet1 and Subnet2	

QUESTION 3

You have a web app named WebApp1 that uses an Azure App Service plan named Plan1. Plan1 uses the D1 pricing tier and has an instance count of 1.

You need to ensure that all connections to WebApp1 use HTTPS.

What should you do first?

- A. Scale up Plan1.
- B. Modify the connection strings for WebApp1.
- C. Scale out Plan1.
- D. Disable anonymous access to WebApp1.



Correct Answer: A

The D1 (Shared) pricing tier does not support HTTPS.

QUESTION 4

You need to configure AG1. What should you create?

- A. a basic routing rule
- B. a multi-site listener
- C. a basic listener
- D. a URL path-based routing rule

Correct Answer: D

<https://docs.microsoft.com/en-us/azure/application-gateway/application-gateway-create-url-route-portal>

QUESTION 5

You have the following resource groups:

Resource group	Comments
DevServer_WestCentralUS	This resource group is located in the West Central US region and contains a single virtual machine (VM) named DevServer. DevServer is connected to a private subnet in an Azure Virtual Network that has no internet access.
Workstation_EastUS	This resource group is located in the East US region and contains a virtual machine named DevWorkstation. DevWorkstation is connected to a subnet in a Visual Network and is configured with a public IP address. A network security group has been configured to allow public incoming remote desktop protocol (RDP) connections to the DevWorkstation.

Developers must connect to Dev Server only through Dev Workstation. To maintain security, DevS erver must not accept connections from the internet. You need to create a private connection between the Dev Workstation and Dev St Solution: Configure an IP address on each subnet within the same address space.

Does the solution meet the goal?

- A. Yes
- B. NO

Correct Answer: B

[Latest AZ-300 Dumps](#)

[AZ-300 VCE Dumps](#)

[AZ-300 Study Guide](#)



To Read the [Whole Q&As](#), please purchase the [Complete Version](#) from [Our website](#).

Try our product !

100% Guaranteed Success

100% Money Back Guarantee

365 Days Free Update

Instant Download After Purchase

24x7 Customer Support

Average 99.9% Success Rate

More than 800,000 Satisfied Customers Worldwide

Multi-Platform capabilities - [Windows](#), [Mac](#), [Android](#), [iPhone](#), [iPod](#), [iPad](#), [Kindle](#)

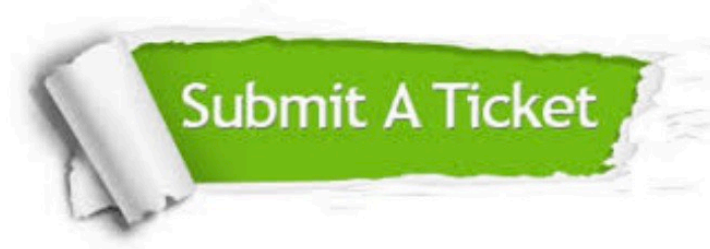
We provide exam PDF and VCE of Cisco, Microsoft, IBM, CompTIA, Oracle and other IT Certifications. You can view Vendor list of All Certification Exams offered:

<https://www.pass4itsure.com/allproducts>

Need Help

Please provide as much detail as possible so we can best assist you.

To update a previously submitted ticket:



 <p>One Year Free Update Free update is available within One Year after your purchase. After One Year, you will get 50% discounts for updating. And we are proud to boast a 24/7 efficient Customer Support system via Email.</p>	 <p>Money Back Guarantee To ensure that you are spending on quality products, we provide 100% money back guarantee for 30 days from the date of purchase.</p>	 <p>Security & Privacy We respect customer privacy. We use McAfee's security service to provide you with utmost security for your personal information & peace of mind.</p>
---	---	--

Any charges made through this site will appear as Global Simulators Limited.

All trademarks are the property of their respective owners.

Copyright © pass4itsure, All Rights Reserved.