



AZ-300^{Q&As}

Microsoft Azure Architect Technologies

Pass Microsoft AZ-300 Exam with 100% Guarantee

Free Download Real Questions & Answers **PDF** and **VCE** file from:

<https://www.pass4itsure.com/az-300.html>

100% Passing Guarantee
100% Money Back Assurance

Following Questions and Answers are all new published by Microsoft
Official Exam Center

-  **Instant Download** After Purchase
-  **100% Money Back** Guarantee
-  **365 Days** Free Update
-  **800,000+** Satisfied Customers

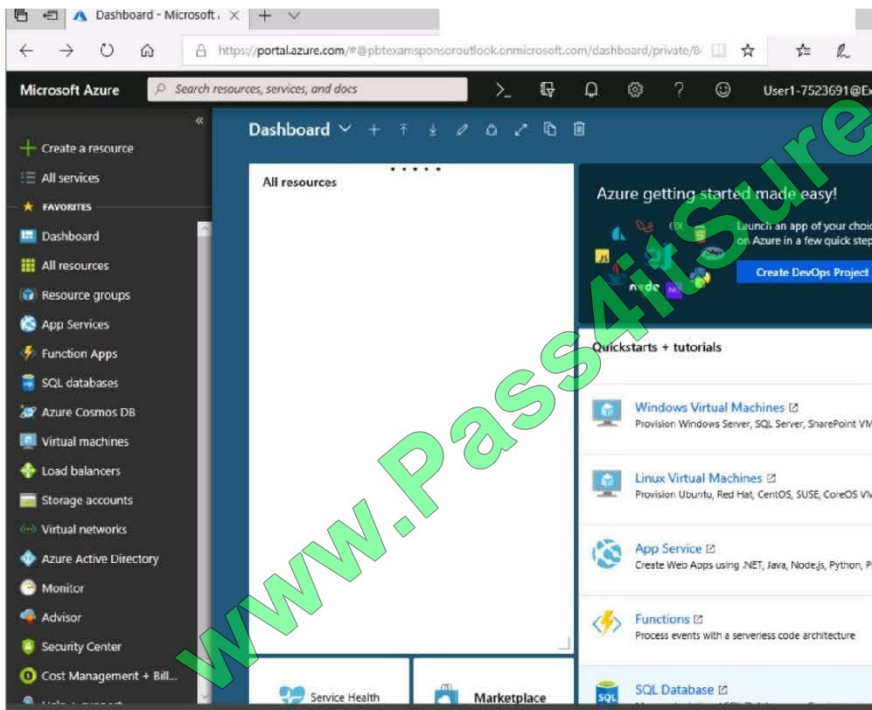
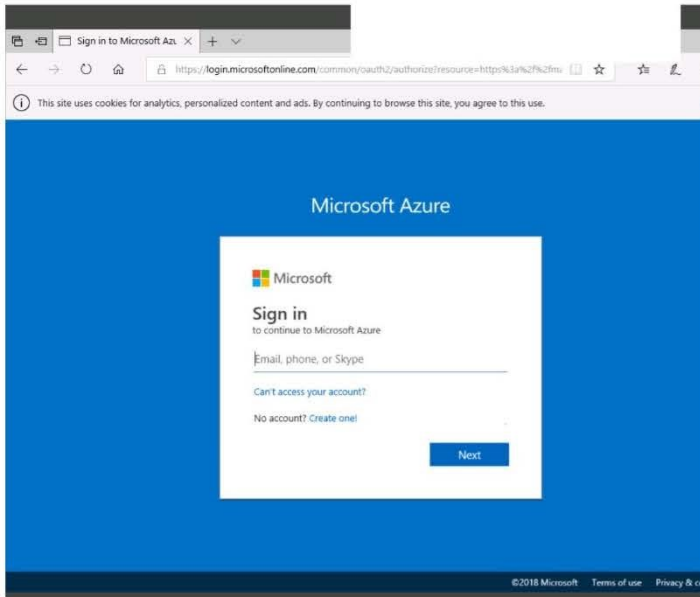




QUESTION 1

SIMULATION

Click to expand each objective. To connect to the Azure portal, type <https://portal.azure.com> in the browser address bar.





Home > Storage accounts > Create storage account

Create storage account

Validation passed

Basics Advanced Tags Review + create

BASICS

Subscription	Microsoft AZ-100 5
Resource group	corpdata7523690
Location	East US
Storage account name	corpdata7523690n1
Deployment model	Resource manager
Account kind	StorageV2 (general purpose v2)
Replication	Read-access geo-redundant storage (RA-GRS)
Performance	Standard
Access tier (default)	Hot

ADVANCED

Secure transfer required	Enabled
Hierarchical namespace	Disabled

Create Previous Next Download a template for automation

Home > Storage accounts > Create storage account

Create storage account

Basics Advanced Tags Review + create

BASICS

Subscription	Microsoft AZ-100 5
Resource group	corpdata7523690
Location	East US
Storage account name	corpdata7523690n1
Deployment model	Resource manager
Account kind	StorageV2 (general purpose v2)
Replication	Read-access geo-redundant storage (RA-GRS)
Performance	Standard
Access tier (default)	Hot

ADVANCED

Secure transfer required	Enabled
Hierarchical namespace	Disabled

*** Submitting deployment...
Submitting the deployment template for resource 'corpdata7523690'.

Home > Microsoft.StorageAccount-20181011170335 - Overview

Microsoft.StorageAccount-20181011170335 - Overview

Deployment

Delete Cancel Redeploy Refresh

Search (Ctrl+/)

Overview

- Outputs
- Inputs
- Template

Your deployment is underway

Check the status of your deployment, manage resources, or troubleshoot deployment issues. Pin this page to your dashboard to easily find it next time.

Deployment
name: Microsoft.StorageAccount-20181011170335
Subscription: Microsoft AZ-100 5
Resource group: corpdata7523690


DEPLOYMENT DETAILS (Download)
Start time: 10/11/2018 5:04:06 PM
Duration: 17 seconds
Correlation ID: bd0806a4-d1bd-42db-be6b-55e0ec38f49b

RESOURCE	TYPE	STATUS	OPERATL...
No results.			



[Home](#) > [Virtual machines](#) > Create a virtual machine

Create a virtual machine

 Validation failed. Required information is missing or not valid.

[Basics](#) • [Disks](#) [Networking](#) [Management](#) [Guest config](#) [Tags](#) [Review + create](#)

PRODUCT DETAILS

Ubuntu Server 18.04 LTS

by Canonical

[Terms of use](#) | [Privacy policy](#)

Pricing not available for this offering

View [Pricing details](#) for more information.

Standard D2s v3

by Microsoft

[Terms of use](#) | [Privacy policy](#)

Subscription credits apply 

0.0960 USD/hr

[Pricing for other VM sizes](#)

TERMS

By clicking "Create", I agree to the legal terms and privacy statement(s) associated with the Marketplace offering(s) listed above; (b) authorize Microsoft to bill my current payment method for the fees associated with the offering(s), with the same billing frequency as my Azure subscription; and (c) agree that Microsoft may share my contact, usage and transactional information with the provider(s) of the offering(s) for support, billing and other transactional activities. Microsoft does not provide rights for third-party offerings. See the [Azure Marketplace Terms](#) for additional details.

When you are finished performing all the tasks, click the `Next` button.

Note that you cannot return to the lab once you click the `Next` button. Scoring occurs in the background while you complete the rest of the exam.

Overview

The following section of the exam is a lab. In this section, you will perform a set of tasks in a live environment. While most functionality will be available to you as it would be in a live environment, some functionality (e.g., copy and paste, ability to navigate to external websites) will not be possible by design.

Scoring is based on the outcome of performing the tasks stated in the lab. In other words, it doesn't matter how you accomplish the task, if you successfully perform it, you will earn credit for that task.

Labs are not timed separately, and this exam may have more than one lab that you must complete. You can use as much time as you would like to complete each lab. But, you should manage your time appropriately to ensure that you are

able to complete the lab(s) and all other sections of the exam in the time provided.

Please note that once you submit your work by clicking the Next button within a lab, you will NOT be able to return to the lab.



To start the lab

You may start the lab by clicking the Next button.

You need to deploy an Azure virtual machine named VM1004a based on an Ubuntu Server image, and then to configure VM1004a to meet the following requirements:

- The virtual machines must contain data disks that can store at least 15 TB of data
- The data disk must be able to provide at least 2,000 IOPS
- Storage costs must be minimized What should you do from the Azure portal?

Correct Answer: See solution below.

Step 1: Open the Azure portal.

Step 2: On the left menu, select All resources. You can sort the resources by Type to easily find your images.

Step 3: Select the image you want to use from the list. The image Overview page opens.

Step 4: Select Create VM from the menu.

Step 5: Enter the virtual machine information. Select VM1004a as the name for the first Virtual machine. The user name and password entered here will be used to log in to the virtual machine. When complete, select OK. You can create the

new VM in an existing resource group, or choose Create new to create a new resource group to store the VM.

Step 6: Select a size for the VM. To see more sizes, select View all or change the Supported disk type filter. To support 15 TB of data you would need a Premium disk.

Step 7: Under Settings, make changes as necessary and select OK.

Step 8: On the summary page, you should see your image name listed as a Private image. Select Ok to start the virtual machine deployment.

References:

<https://docs.microsoft.com/en-us/azure/virtual-machines/windows/create-vm-generalized-managed>

QUESTION 2

You have an Azure subscription that contains 10 virtual machines.

You need to ensure that you receive an email message when any virtual machines are powered off, restarted, or deallocated.

What is the minimum number of rules and action groups that you require?

- A. three rules and three action groups
- B. one rule and one action group
- C. three rules and one action group



D. one rule and three action groups

Correct Answer: C

QUESTION 3

HOTSPOT

You network contains an Active Directory domain named adatum.com and an Azure Active Directory (Azure AD) tenant named adatum.onmicrosoft.com. Adatum.com contains the user accounts in the following table.

Name	Member of
User1	Domain Admins
User2	Schema Admins
User3	Incoming Forest Trust Builders
User4	Replicator
User5	Enterprise Admins

Adatum.onmicrosoft.com contains the user accounts in the following table.

Name	Role
UserA	Global administrator
UserB	User administrator
UserC	Security administrator
UserD	Service administrator

You need to implement Azure AD Connect. The solution must follow the principle of least privilege.

Which user accounts should you use? To answer, select the appropriate options in the answer area.

NOTE: Each correct selection is worth one point.

Hot Area:



Answer Area

Adatum.com:

User1
User2
User3
User4
User5

Adatum.onmicrosoft.com:

UserA
UserB
UserC
UserD

Correct Answer:



Answer Area

Adatum.com:

User1
User2
User3
User4
User5

Adatum.onmicrosoft.com:

UserA
UserB
UserC
UserD

Box 1: User5

In Express settings, the installation wizard asks for the following:

AD DS Enterprise Administrator credentials

Azure AD Global Administrator credentials

The AD DS Enterprise Admin account is used to configure your on-premises Active Directory. These credentials are only used during the installation and are not used after the installation has completed. The Enterprise Admin, not the Domain

Admin should make sure the permissions in Active Directory can be set in all domains.

Box 2: UserA

Azure AD Global Admin credentials are only used during the installation and are not used after the installation has completed. It is used to create the Azure AD Connector account used for synchronizing changes to Azure AD. The account

also enables sync as a feature in Azure AD.

References:

<https://docs.microsoft.com/en-us/azure/active-directory/connect/active-directory-aadconnect-accounts-permissions>

**QUESTION 4**

You have an Azure App Service API that allows users to upload documents to the cloud with a mobile device. A mobile app connects to the service by using REST API calls. When a new document is uploaded to the service, the service extracts the document metadata. Usage statistics for the app show significant increases in app usage.

The extraction process is CPU-intensive. You plan to modify the API to use a queue.

You need to ensure that the solution scales, handles request spikes, and reduces costs between request spikes.

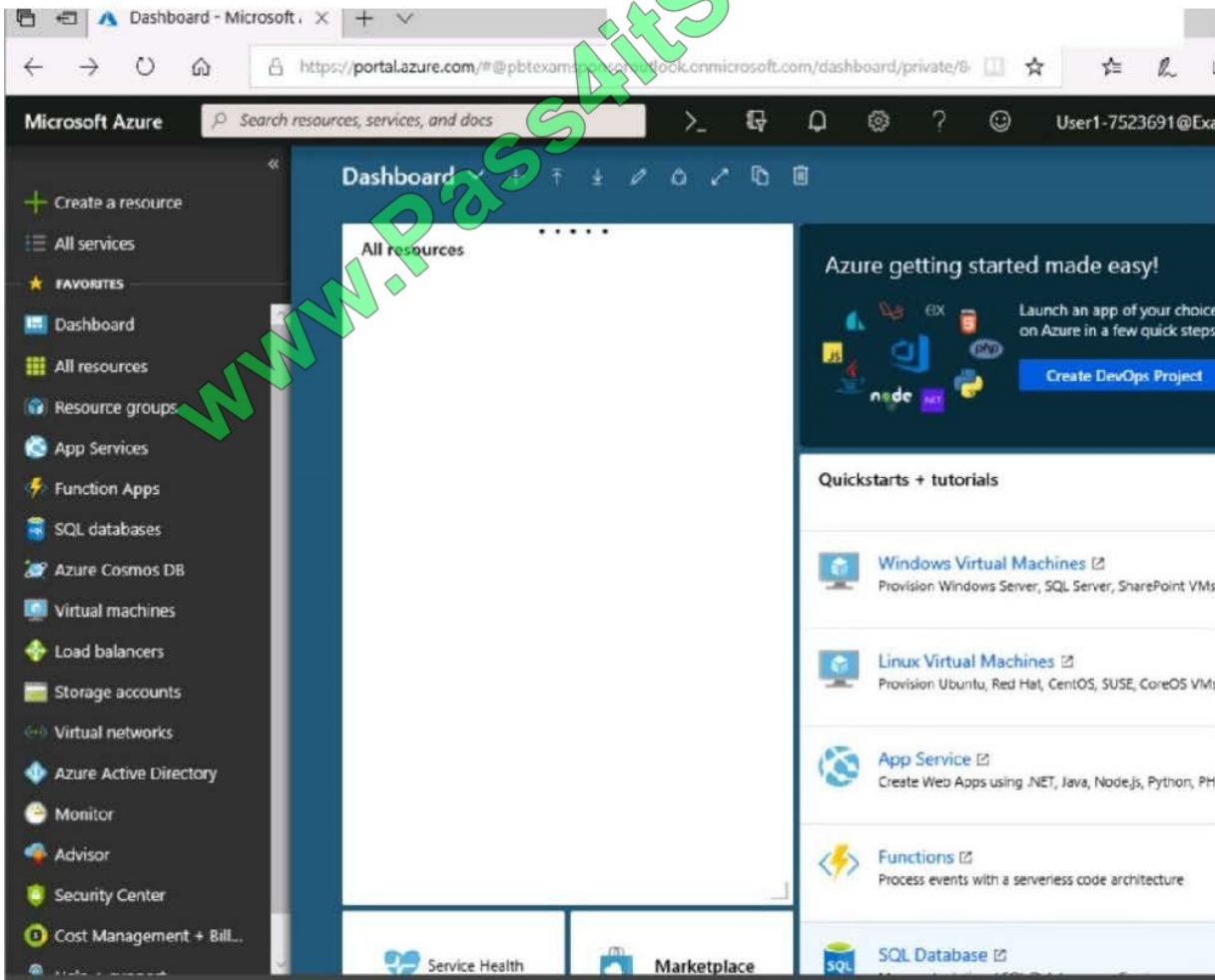
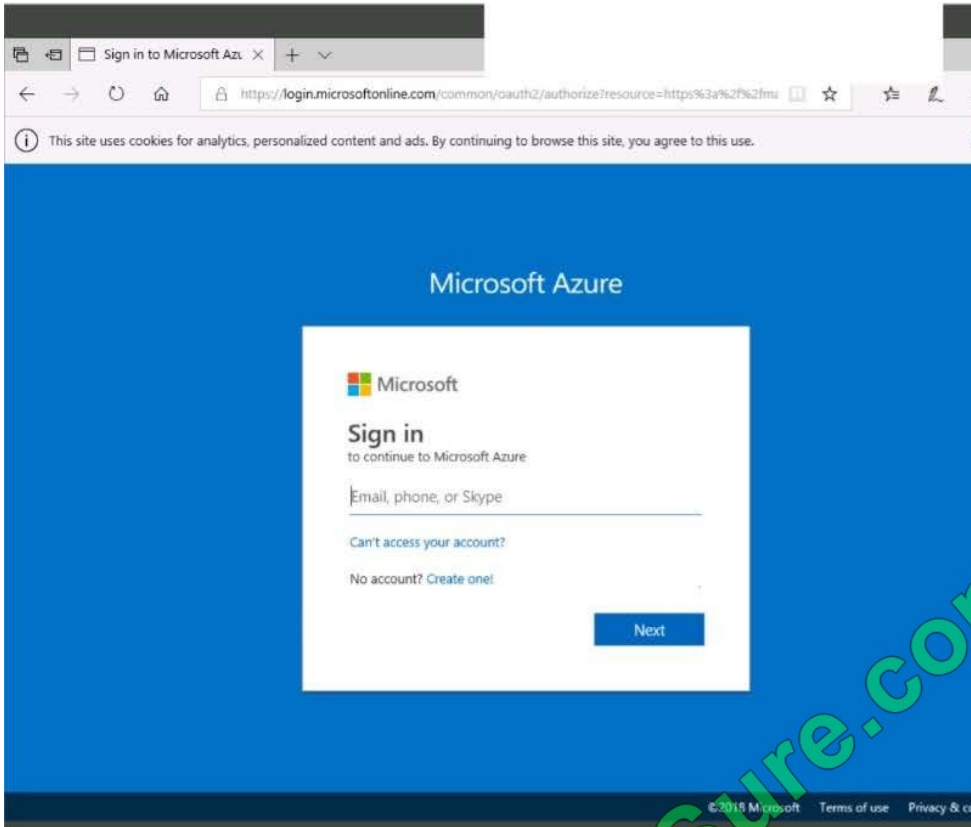
What should you do?

- A. Configure a CPU Optimized virtual machine (VM) and install the Web App service on the new instance.
- B. Configure a series of CPU Optimized virtual machine (VM) instances and install extraction logic to process a queue.
- C. Move the extraction logic into an Azure Function. Create a queue triggered function to process the queue.
- D. Configure Azure Container Service to retrieve items from a queue and run across a pool of virtual machine (VM) nodes using the extraction logic.

Correct Answer: C

QUESTION 5**SIMULATION**

Click to expand each objective. To connect to the Azure portal, type <https://portal.azure.com> in the browser address bar.





Home > Storage accounts > Create storage account

Create storage account

✓ Validation passed

Basics Advanced Tags Review + create

BASICS

Subscription	Microsoft AZ-100 5
Resource group	corpdata7523690
Location	East US
Storage account name	corpdata7523690n1
Deployment model	Resource manager
Account kind	StorageV2 (general purpose v2)
Replication	Read-access geo-redundant storage (RA-GRS)
Performance	Standard
Access tier (default)	Hot

ADVANCED

Secure transfer required	Enabled
Hierarchical namespace	Disabled

Create Previous Next Download a template for automation

Home > Storage accounts > Create storage account

Create storage account

Basics Advanced Tags Review + create

BASICS

Subscription	Microsoft AZ-100 5
Resource group	corpdata7523690
Location	East US
Storage account name	corpdata7523690n1
Deployment model	Resource manager
Account kind	StorageV2 (general purpose v2)
Replication	Read-access geo-redundant storage (RA-GRS)
Performance	Standard
Access tier (default)	Hot

ADVANCED

Secure transfer required	Enabled
Hierarchical namespace	Disabled

*** Submitting deployment...
Submitting the deployment template for resource 'corpdata7523690'.

Home > Microsoft.StorageAccount-20181011170335 - Overview

Microsoft.StorageAccount-20181011170335 - Overview

Deployment

Delete Cancel Redeploy Refresh

Search (Ctrl+/)

Overview Outputs Inputs Template

*** Your deployment is underway

Check the status of your deployment, manage resources, or troubleshoot deployment issues. Pin this page to your dashboard to easily find it next time.

Deployment
name: Microsoft.StorageAccount-20181011170335
Subscription: Microsoft AZ-100 5
Resource group: corpdata7523690

DEPLOYMENT DETAILS (Download)
Start time: 10/11/2018 5:04:06 PM
Duration: 17 seconds
Correlation ID: bd0806a4-d1bd-42db-be6b-55e0ec38f49b

RESOURCE	TYPE	STATUS	OPERATL...
No results.			

[Home](#) > [Virtual machines](#) > Create a virtual machine

Create a virtual machine

! Validation failed. Required information is missing or not valid.

[Basics](#) • [Disks](#) [Networking](#) [Management](#) [Guest config](#) [Tags](#) [Review + create](#)

PRODUCT DETAILS

Ubuntu Server 18.04 LTS

by Canonical

[Terms of use](#) | [Privacy policy](#)

Standard D2s v3

by Microsoft

[Terms of use](#) | [Privacy policy](#)

Pricing not available for this offering

View [Pricing details](#) for more information.

Subscription credits apply ⓘ

0.0960 USD/hr

[Pricing for other VM sizes](#)

TERMS

By clicking "Create", I agree to the legal terms and privacy statement(s) associated with the Marketplace offering(s) listed above; (b) authorize Microsoft to bill my current payment method for the fees associated with the offering(s), with the same billing frequency as my Azure subscription; and (c) agree that Microsoft may share my contact, usage and transactional information with the provider(s) of the offering(s) for support, billing and other transactional activities. Microsoft does not provide rights for third-party offerings. See the [Azure Marketplace Terms](#) for additional details.

When you are finished performing all the tasks, click the `Next` button.

Note that you cannot return to the lab once you click the `Next` button. Scoring occurs in the background while you complete the rest of the exam.

Overview

The following section of the exam is a lab. In this section, you will perform a set of tasks in a live environment. While most functionality will be available to you as it would be in a live environment, some functionality (e.g., copy and paste, ability to navigate to external websites) will not be possible by design.

Scoring is based on the outcome of performing the tasks stated in the lab. In other words, it doesn't matter how you accomplish the task, if you successfully perform it, you will earn credit for that task.

Labs are not timed separately, and this exam may have more than one lab that you must complete. You can use as much time as you would like to complete each lab. But, you should manage your time appropriately to ensure that you are

able to complete the lab(s) and all other sections of the exam in the time provided.

Please note that once you submit your work by clicking the Next button within a lab, you will NOT be able to return to the lab.



To start the lab

You may start the lab by clicking the Next button.

Your company plans to store several documents on a public website.

You need to create a container named bios that will host the documents in the storagelod8322489 storage account. The solution must ensure anonymous access and must ensure that users can browse folders in the container.

What should you do from the Azure portal?

Correct Answer:

[Latest AZ-300 Dumps](#)

[AZ-300 Practice Test](#)

[AZ-300 Exam Questions](#)



To Read the [Whole Q&As](#), please purchase the [Complete Version](#) from [Our website](#).

Try our product !

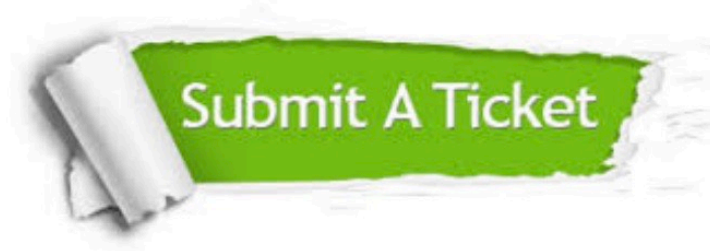
100% Guaranteed Success
100% Money Back Guarantee
365 Days Free Update
Instant Download After Purchase
24x7 Customer Support
Average 99.9% Success Rate
More than 800,000 Satisfied Customers Worldwide
Multi-Platform capabilities - [Windows](#), [Mac](#), [Android](#), [iPhone](#), [iPod](#), [iPad](#), [Kindle](#)

We provide exam PDF and VCE of Cisco, Microsoft, IBM, CompTIA, Oracle and other IT Certifications. You can view Vendor list of All Certification Exams offered:

<https://www.pass4itsure.com/allproducts>

Need Help

Please provide as much detail as possible so we can best assist you.
To update a previously submitted ticket:



 <p>One Year Free Update Free update is available within One Year after your purchase. After One Year, you will get 50% discounts for updating. And we are proud to boast a 24/7 efficient Customer Support system via Email.</p>	 <p>Money Back Guarantee To ensure that you are spending on quality products, we provide 100% money back guarantee for 30 days from the date of purchase.</p>	 <p>Security & Privacy We respect customer privacy. We use McAfee's security service to provide you with utmost security for your personal information & peace of mind.</p>
---	---	--

Any charges made through this site will appear as Global Simulators Limited.
All trademarks are the property of their respective owners.
Copyright © pass4itsure, All Rights Reserved.